

MISSION-CRITICAL
INTERCONNECT
SOLUTIONS



SERIES 260

MIL-DTL-26482

Series 2 Type Connectors

Rugged Bayonet-Coupling
Crimp-Contact Connectors

JUNE 2024



Glenair MIL-DTL-26482 Type Bayonet-Lock Connectors



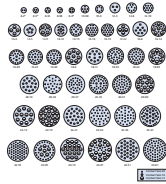
MIL-DTL-26482 Series 2 Type Rugged bayonet-coupling crimp-contact connectors

- For rugged military and industrial applications that require quick mate/demate three-point bayonet-lock coupling
- Glenair 26482-style connectors offer high-performance plating options unavailable in standard mil-spec parts including TZ Tin-Zinc, our recommended RoHS-material AMS2434 Type 2 qualified cadmium-compatible replacement, ZR black zinc-nickel, and Z1 passivated stainless steel.
- Complete range of tooled MIL-STD-1669 insert arrangements for size #20, #16, and #12 signal and power crimp, rear-release contacts. The Glenair solution offers three shell size 8 arrangements not available in the mil-spec version



Selection guide

GENERAL INFORMATION



General Information

MIL-STD-1669 Contact Arrangements and Alternate Positions
Reference Information: Coupling Torque, Electrical Performance, Materials and Finishes

CONTACTS AND TOOLS



Contacts and Tools

Mil-Spec 39029 contacts
Insertion / removal tools

PLUG CONNECTORS



MIL-DTL-26482 Series 2 COTS-equivalent Plug connectors

260-002-75 Plug with EMI Spring
260-002-76 Non-EMI Plug

NARROW-FLANGE WALL-MOUNT RECEPTACLES



MIL-DTL-26482 Series 2 COTS-equivalent Narrow-Flange Wall-Mount Receptacles

260-002-70 Narrow-Flange Wall-Mount Receptacle

WIDE-FLANGE WALL-MOUNT RECEPTACLES



MIL-DTL-26482 Series 2 COTS-equivalent Wide-Flange Wall-Mount Receptacles

260-002-72 Wide-Flange Wall-Mount Receptacle

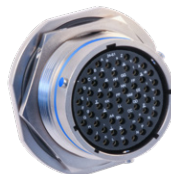
CABLE-CONNECTING RECEPTACLES



MIL-DTL-26482 Series 2 COTS-equivalent Cable Connecting Receptacles

260-002-71 Cable Connecting Receptacle

JAM-NUT RECEPTACLES

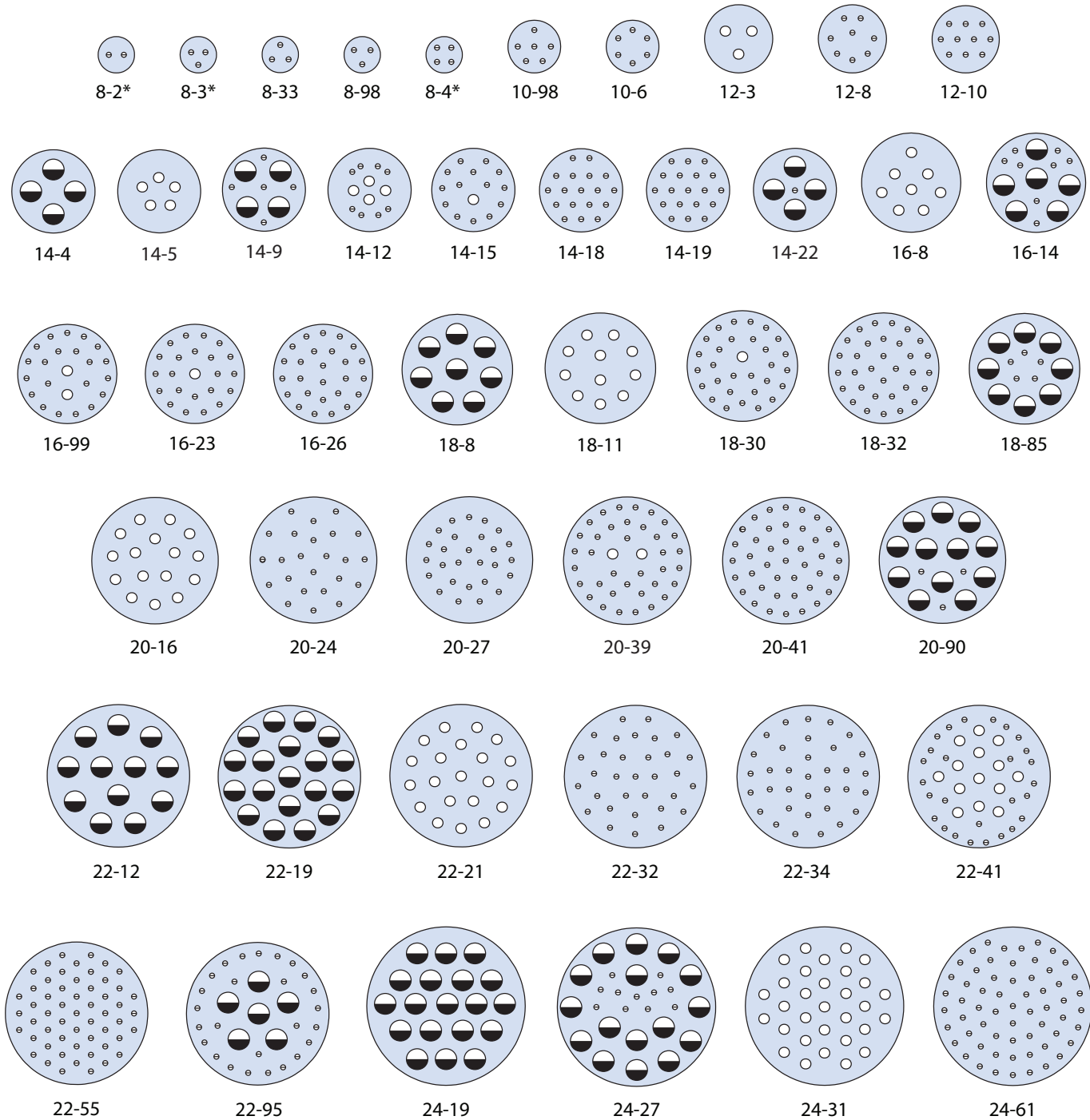


MIL-DTL-26482 Series 2 COTS-equivalent Jam-Nut Receptacles

260-002-74 Jam-Nut Receptacle

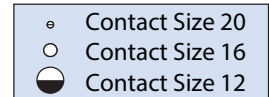
GLENAIR SERIES 260 MIL-DTL-26482 Series 2 Type

MIL-STD-1669 contact arrangements



Mil-Spec Contact Part Numbers		
Contact Size	Pin Contacts P/N	Socket Contacts P/N
20	M39029/4-110	M39029/5-115
16	M39029/4-111	M39029/5-116
12	M39029/4-113	M39029/5-118

*8-2, 8-3, 8-4 are non-QPL arrangements, available in Glenair COTS part numbers only.



MIL-STD-1669 contact arrangements table and alternate positions

Insert Arrangements					
Shell Size Designator	Insert Arrangement Dash Number	Contact Size and Quantity			Service Rating
		20	16	12	
8	8-2	2			I
	8-3	3			I
	8-4	4			I
	8-33	3			I
	8-98	3			I
10	10-6	6			I
	10-98	6			I
12	12-3		3		II
	12-8	8			I
	12-10	10			I
14	14-4			4	I
	14-5		5		II
	14-9	5		4	I
	14-12	8	4		I
	14-15	14	1		I
	14-18	18			I
	14-19	19			I
	14-22	1		4	I
16	16-8		8		II
	16-14	8		6	I
	16-23	22	1		I
	16-26	26			I
	16-99	21	2		I
18	18-8			8	I
	18-11		11		II
	18-30	29	1		I
	18-32	32			I
	18-85	5		8	I
20	20-16		16		II
	20-24	24			I
	20-27	27			I
	20-39	37	2		I
	20-41	41			I
	20-90	3		12	I
22	22-12			12	I
	22-19			19	I
	22-21		21		II
	22-32	32			I
	22-34	34			I
	22-41	27	14		I
	22-55	55			I
	22-95	26		6	I
24	24-19			19	II
	24-27	11		16	I
	24-31		31		I
	24-61	61			I

ALTERNATE POSITIONS				
Shell Size / Insert Arrangement				
	A°			
	W	X	Y	Z
8-2	58	122	-	-
8-3	60	210	-	-
8-4	45	-	-	-
8-33	90	-	-	-
8-98	-	-	-	-
10-6	90	-	-	-
10-98	90	180	240	270
12-3	-	-	180	-
12-8	90	112	203	292
12-10	60	155	270	295
14-4	45	-	-	-
14-5	40	92	184	273
14-9	15	90	180	240
14-12	43	90	-	-
14-15	17	110	155	234
14-18	15	90	180	270
14-19	30	165	315	-
14-22	45	-	-	-
16-8	54	152	180	331
16-14	25	78	180	240
16-23	158	270	-	-
16-26	60	-	275	338
16-99	66	156	223	340
18-8	180	-	-	-
18-11	62	119	241	340
18-30	180	193	285	350
18-32	85	138	222	265
18-85	45	90	180	240
20-16	238	318	333	347
20-24	70	145	215	290
20-27	72	144	216	288
20-39	63	144	252	333
20-41	45	126	225	-
20-90	18	60	240	270
22-12	-	-	-	-
22-19	15	90	225	308
22-21	16	135	175	349
22-32	72	145	215	288
22-34	62	142	218	298
22-41	39	135	264	-
22-55	30	142	226	314
22-95	26	180	266	-
24-19	30	165	315	-
24-27	45	110	140	225
24-31	90	225	255	-
24-61	90	180	270	324

GLENAIR SERIES 260

MIL-DTL-26482 Series 2 Type

Reference information

COUPLING TORQUE		
Shell Size	Torque	
	Maximum engagement and disengagement	Minimum disengagement
8	8 (.904 N-m)	1 (.113 N-m)
10	10 (1.13 N-m)	
12	14 (1.58 N-m)	2 (.226 N-m)
14	17 (1.92 N-m)	4 (.452 N-m)
16	23 (2.60 N-m)	
18	26 (2.94 N-m)	
20	31 (3.50 N-m)	6 (.678 N-m)
22	38 (4.29 N-m)	7 (.791 N-m)
24		

DIELECTRIC WITHSTANDING VOLTAGE		
Altitude (ft.)	Minimum Test Voltages, AC (RMS)	
	Service Rating I	Service Rating II
Sea Level	1,500	2,300
50,000	500	750
70,000	375	500
110,000	200	200

WORKING VOLTAGE, AC, RMS		
Condition	Service Rating I	Service Rating II
Sea Level	600	1,000
70,000 ft.	600	450

MATERIAL AND FINISH OPTIONS									
	Code / Class	Material	Finish	Finish Specification	Salt Spray Hrs.	Electrical Conductivity	Operating Temp. Range	RoHS Materials	Notes
Glenair COTS Code	AB	Marine Bronze	Unplated	AMS4640 alloy, unplated	1000	Conductive	-65° to +200°C	✓	Marine and geo-physical applications
	ME	Aluminum	Electroless Nickel	AMS-C-26074, Grade A; ASTM B733, SC 3	96	Conductive	-65° to +200°C	✓	Glenair's standard high-build electroless Nickel finish.
	NF	Aluminum	Cadmium, Olive Drab	AMS-QQ-P-416, Type II, Class 2, over electroless Nickel	500	Conductive	-65° to +175°C		Glenair's standard olive drab Cadmium finish.
	TZ	Aluminum	Tin-Zinc, Green-Gold	AMS2434, Type 2, over electroless Nickel	500	Conductive	-65° to +175°C	✓	Glenair's recommended Cadmium-compatible replacement.
	ZR	Aluminum	Zinc-Nickel, Black	ASTM B841, over electroless Nickel	500	Conductive	-65° to +175°C	✓	Glenair's standard black Zinc-Nickel finish.
	Z1	Stainless Steel	Passivate			48	Conductive	-55° to +200°C	✓

Consult Glenair for other material / finish options

MATERIAL / FINISH

Wave spring = Stainless steel / passivated
 Grounding spring = Copper alloy / nickel plated
 Insulator = high-grade rigid dielectric
 Seals, grommet = fluorosilicone blend

NOTES

260-002 Series connectors are designed to mate with any QPL manufacturer's MIL-DTL-26482 Series 1 and 2 connectors with the same shell size, insert arrangement, and polarization
 Connectors ordered with contacts will be supplied with spares, insertion/removal tool, and sealing plugs; or ordered without contacts / spares / tool.

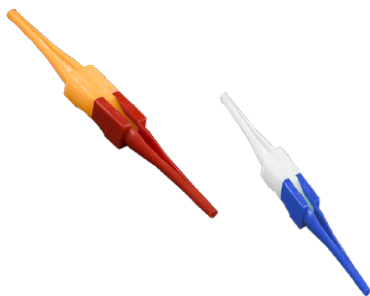
Crimp contacts and contact insertion/removal tools

MIL-SPEC CRIMP CONTACTS FOR GLENAIR SERIES 260-002 M26482 TYPE CONNECTORS

Glenair Series 260-002 MIL-DTL-26482 Series 2 type connectors are supplied with contacts (including spares), insertion / removal tool, and sealing plugs. Connectors may also be ordered without contacts. Additional contacts, insertion/removal tools, crimp tools, and positioners may be ordered using the part numbers on this page:

M39029/4-110 Size 20 pin contact	M39029/5-115 Size 20 socket contact	M39029/4-111 Size 16 pin contact	M39029/5-116 Size 16 socket contact	M39029/4-113 Size 12 pin contact	M39029/5-118 Size 12 socket contact

CONTACT INSERTION / REMOVAL TOOLS



Contact	Insertion Tool	Removal Tool	
		Wired Contact	Unwired Contact
M39029/4-110 Size 20 pin	M81969/14-11	M81969/14-11	M81969/30-05
M39029/5-115 Size 20 socket	M81969/14-11	M81969/14-11	M81969/30-05
M39029/4-111 Size 16 pin	M81969/14-03	M81969/14-03	M81969/30-06
M39029/5-116 Size 16 socket	M81969/14-03	M81969/14-03	M81969/30-06
M39029/4-113 Size 12 pin	M81969/14-04	M81969/14-04	M81969/30-06
M39029/5-118 Size 12 socket	M81969/14-04	M81969/14-04	M81969/30-07

CRIMP TOOLS AND POSITIONERS



Contact	Crimping Tool	Positioner
M39029/4-110 Size 20 pin	M22520/1-01 or M22520/2-01 or M22520/7-01	M22520/1-02 RED or M22520/2-02 or M22520/7-02
M39029/5-115 Size 20 socket	M22520/1-01 or M22520/2-01 or M22520/7-01	M22520/1-02 RED or M22520/2-02 or M22520/7-02
M39029/4-111 Size 16 pin	M22520/1-01 or M22520/7-01	M22520/1-02 BLUE or M22520/7-03
M39029/5-116 Size 16 socket	M22520/1-01 or M22520/7-01	M22520/1-02 BLUE or M22520/7-03
M39029/4-113 Size 12 pin	M22520/1-01	M22520/1-02 YELLOW
M39029/5-118 Size 12 socket	M22520/1-01	M22520/1-02 YELLOW

GLENAIR SERIES 260

MIL-DTL-26482 Series 2 Type

260-002-75 Plug with EMI Spring / 260-002-76 Non-EMI plug



COTS PART NUMBER DEVELOPMENT						
Sample Part Number	260-002-75	ME	16	-26	P	Y
Series / Basic Part No.	260-002-75 = Plug with EMI ground spring 260-002-76 = Non-EMI plug					
Material/Finish	AB = Aluminum marine bronze, unplated NF = Aluminum, cadmium O.D. over electroless nickel ME = Aluminum, electroless nickel TZ = Aluminum, tin-zinc green-gold over electroless nickel ZR = Aluminum, zinc nickel-black Z1 = Stainless Steel, passivated					
Shell Size	8, 10, 12, 14, 16, 18, 20, 22, 24					
Contact Arrangement	Per MIL-STD-1669; See reference information section for details					
Contact Type	P = Pin, Gold, 500 mating cycles A = Pin insert, less pin contacts S = Socket, Gold, 500 mating cycles B = Socket insert, less socket contacts Connectors supplied with contacts (including spares), insertion/removal tool, and sealing plugs					
Alt. Polarization	W, X, Y, Z, Omit for normal					

CONTACT ARRANGEMENT			
How-to-Order Code	Size / Quantity		
	20	16	12
8-2	2		
8-3	3		
8-4	4		
8-33	3		
8-98	3		
10-6	6		
10-98	6		
12-3		3	
12-8	8		
12-10	10		
14-4			4
14-5		5	
14-9	5		4
14-12	8	4	
14-15	14	1	
14-18	18		
14-19	19		
14-22	1		4
16-8		8	
16-14	8		6
16-23	22	1	
16-26	26		
16-99	21	2	
18-8			8
18-11		11	
18-30	29	1	
18-32	32		
18-85	5		8
20-16		16	
20-24	24		
20-27	27		
20-39	37	2	
20-41	41		
20-90	3		12
22-12			12
22-19			19
22-21		21	
22-32	32		
22-34	34		
22-41	27	14	
22-55	55		
22-95	26		6
24-19			19
24-27	11		16
24-31		31	
24-61	61		

DIMENSIONS			
Shell Size	ØA Max		D Thread
	In	mm	
8	0.782	19.86	.5000-20 UNF-2A
10	0.926	23.52	.6250-24 UNEF-2A
12	1.043	26.49	.7500-20 UNEF-2A
14	1.183	30.05	.8750-20 UNEF-2A
16	1.305	33.15	1.000-20 UNEF-2A
18	1.391	35.33	1.0625-18 UNEF-2A
20	1.531	38.89	1.1875-18 UNEF-2A
22	1.656	42.06	1.3125-18 UNEF-2A
24	1.777	45.14	1.4375-18 UNEF-2A

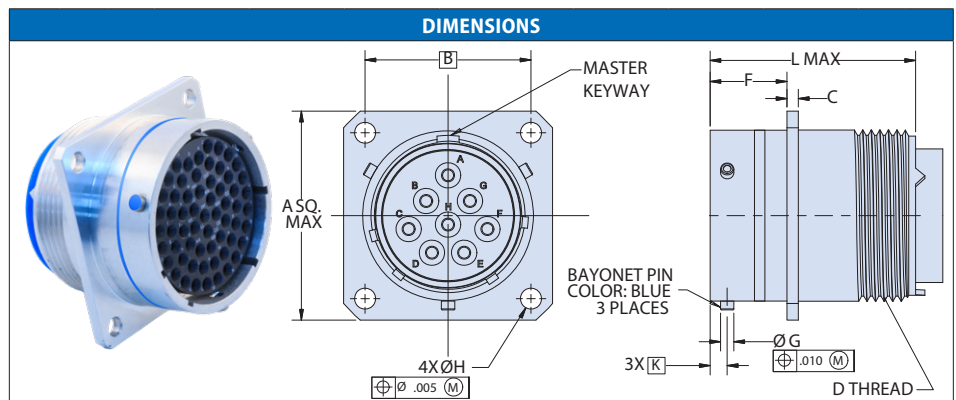
MATERIAL / FINISH OPTIONS	
AB	Marine Bronze, unplated, 1000 hrs. salt spray, -65°C to +175°C, conductive
NF	Aluminum, cadmium O.D. over electroless nickel, 500 hr. salt spray, -65°C to +175°C, conductive
ME	Aluminum, electroless nickel, 48 hr. salt spray, -65°C to +200°C, conductive, RoHS materials
TZ	Aluminum, tin-zinc green-gold over electroless nickel, 500 hr. salt spray, -65°C to +175°C, conductive, AMS 2434 Type 2, RoHS materials
ZR	Aluminum, zinc nickel-black, 500 hr. salt spray, -65°C to +175°C, conductive, RoHS materials
Z1	Stainless Steel, passivated, 48 hr. salt spray, -55°C to +200°C, conductive, RoHS materials
Wave spring = Stainless steel / passivated	
Insulator = high-grade rigid dielectric • Seals, grommet = fluorosilicone blend	

260-002-70 Narrow-flange wall-mount receptacle

CONTACT ARRANGEMENT			
How-to-Order Code	Size / Quantity		
	20	16	12
8-2	2		
8-3	3		
8-4	4		
8-33	3		
8-98	3		
10-6	6		
10-98	6		
12-3		3	
12-8	8		
12-10	10		
14-4			4
14-5		5	
14-9	5		4
14-12	8	4	
14-15	14	1	
14-18	18		
14-19	19		
14-22	1		4
16-8		8	
16-14	8		6
16-23	22	1	
16-26	26		
16-99	21	2	
18-8			8
18-11		11	
18-30	29	1	
18-32	32		
18-85	5		8
20-16		16	
20-24	24		
20-27	27		
20-39	37	2	
20-41	41		
20-90	3		12
22-12			12
22-19			19
22-21		21	
22-32	32		
22-34	34		
22-41	27	14	
22-55	55		
22-95	26		6
24-19			19
24-27	11		16
24-31		31	
24-61	61		

FRONT PANEL MOUNTING HOLES				
Shell Size	ØAA	ØM Holes	E	
	in±.005	mm±.13	in±.010	mm±.25
8	.568	14.43	.594	15.09
10	.685	17.40	.719	18.27
12	.864	21.95	.812	20.63
14	.989	25.12	.906	23.02
16	1.113	28.27	.969	24.62
18	1.238	31.45	1.062	26.98
20	1.363	34.62	1.156	29.37
22	1.488	37.80	1.250	31.75
24	1.615	41.02	1.375	34.93

COTS PART NUMBER DEVELOPMENT					
Sample Part Number	260-002-70	ME	16	-26	P Y
Series / Basic Part No.	260-002-70 = Narrow-flange wall-mount receptacle				
Material/Finish	AB = Aluminum marine bronze, unplated NF = Aluminum, cadmium O.D. over electroless nickel ME = Aluminum, electroless nickel TZ = Aluminum, tin-zinc green-gold over electroless nickel ZR = Aluminum, zinc nickel-black Z1 = Stainless Steel, passivated				
Shell Size	8, 10, 12, 14, 16, 18, 20, 22, 24				
Contact Arrangement	Per MIL-STD-1669; See reference information section for details				
Contact Type	P = Pin, Gold, 500 mating cycles A = Pin insert, less pin contacts S = Socket, Gold, 500 mating cycles B = Socket insert, less socket contacts Connectors supplied with contacts (including spares), insertion/removal tool, and sealing plugs				
Alt. Polarization	W, X, Y, Z, Omit for normal				



Shell Size	A Sq.		B Bsc.		C		F		D Thread	ØH Holes		ØG		K Bsc.		L Max	
	In	mm	In	mm	In	mm	In	mm		In	mm	In	mm	In	mm	In	mm
8	.828	21.03	.594	15.09					.5000-20 UNF-2A								
10	.954	24.23	.719	18.26					.6250-24 UNEF-2A								
12	1.047	26.59	.812	20.62	.078	1.98	.462	11.73	.7500-20 UNEF-2A	.120	3.048	.084	2.13	.100	2.54	1.215	30.86
14	1.141	28.98	.906	23.01	.046	1.17	.431	10.95	.8750-20 UNEF-2A			.076	1.93				
16	1.234	31.34	.969	24.61					1.000-20 UNEF-2A								
18	1.328	33.73	1.062	26.97					1.0625-18 UNEF-2A								
20	1.453	36.91	1.156	29.36			.587	14.91	1.1875-18 UNEF-2A								
22	1.578	40.08	1.25	31.75	.110	2.79	.556	14.12	1.3125-18 UNEF-2A							1.275	32.39
24	1.703	43.26	1.375	34.93	.078	1.98	.620	15.75	1.4375-18 UNEF-2A	.147	3.73	.131	3.33	.109	2.77		

MATERIAL / FINISH OPTIONS	
AB	Marine Bronze, unplated, 1000 hrs. salt spray, -65°C to +175°C, conductive
NF	Aluminum, cadmium O.D. over electroless nickel, 500 hr. salt spray, -65°C to +175°C, conductive
ME	Aluminum, electroless nickel, 48 hr. salt spray, -65°C to +200°C, conductive, RoHS materials
TZ	Aluminum, tin-zinc green-gold over electroless nickel, 500 hr. salt spray, -65°C to +175°C, conductive, AMS 2434 Type 2, RoHS materials
ZR	Aluminum, zinc nickel-black, 500 hr. salt spray, -65°C to +175°C, conductive, RoHS materials
Z1	Stainless Steel, passivated, 48 hr. salt spray, -55°C to +200°C, conductive, RoHS materials
Wave spring = Stainless steel / passivated	
Insulator = high-grade rigid dielectric • Seals, grommet = fluorosilicone blend	

GLENAIR SERIES 260 MIL-DTL-26482 Series 2 Type



260-002-71 Cable connecting receptacle



COTS PART NUMBER DEVELOPMENT						
Sample Part Number	260-002-71	ME	16	-26	P	Y
Series / Basic Part No.	260-002-71 = Cable connecting receptacle					
Material/Finish	AB = Aluminum marine bronze, unplated NF = Aluminum, cadmium O.D. over electroless nickel ME = Aluminum, electroless nickel TZ = Aluminum, tin-zinc green-gold over electroless nickel ZR = Aluminum, zinc nickel-black Z1 = Stainless Steel, passivated					
Shell Size	8, 10, 12, 14, 16, 18, 20, 22, 24					
Contact Arrangement	Per MIL-STD-1669; See reference information section for details					
Contact Type	P = Pin, Gold, 500 mating cycles S = Socket, Gold, 500 mating cycles		A = Pin insert, less pin contacts B = Socket insert, less socket contacts Connectors supplied with contacts (including spares), insertion/removal tool, and sealing plugs			
Alt. Polarization	W, X, Y, Z, Omit for normal					

CONTACT ARRANGEMENT			
How-to-Order Code	Size / Quantity		
	20	16	12
8-2	2		
8-3	3		
8-4	4		
8-33	3		
8-98	3		
10-6	6		
10-98	6		
12-3		3	
12-8	8		
12-10	10		
14-4			4
14-5		5	
14-9	5		4
14-12	8	4	
14-15	14	1	
14-18	18		
14-19	19		
14-22	1		4
16-8		8	
16-14	8		6
16-23	22	1	
16-26	26		
16-99	21	2	
18-8			8
18-11		11	
18-30	29	1	
18-32	32		
18-85	5		8
20-16		16	
20-24	24		
20-27	27		
20-39	37	2	
20-41	41		
20-90	3		12
22-12			12
22-19			19
22-21		21	
22-32	32		
22-34	34		
22-41	27	14	
22-55	55		
22-95	26		6
24-19			19
24-27	11		16
24-31		31	
24-61	61		

DIMENSIONS															
Shell Size	A Sq.		B		C		F		D Thread	Ø G		K Bsc		L Max	
	In	mm	In	mm	In	mm	In	mm		In	mm	In	mm	In	mm
8	.828	21.03	.958 .918	24.33 23.32					.5000-20 UNF-2A						
10	.954	24.23	1.082 1.042	27.48 26.47					.6250-24 UNEF-2A						
12	1.047	26.59	1.176 1.136	29.87 28.85	.078	1.98	.462	11.73	.7500-20 UNEF-2A						
14	1.141	28.98	1.270 1.230	32.26 31.24	.046	1.17	.431	10.95	.8750-20 UNEF-2A	.084	2.13	.100	2.54	1.215	30.86
16	1.234	31.34	1.364 1.324	34.65 33.63					1.000-20 UNEF-2A	.076	1.93				
18	1.328	33.73	1.458 1.418	37.03 36.02					1.0625-18 UNEF-2A						
20	1.453	36.91	1.582 1.542	40.18 39.17			.587	14.91	1.1875-18 UNEF-2A						
22	1.578	40.08	1.708 1.668	43.38 42.37	.110 .078	2.79 1.98	.556	14.12	1.3125-18 UNEF-2A					1.275	32.39
24	1.703	43.26	1.832 1.792	46.53 45.52			.620 .589	15.75 14.96	1.4375-18 UNEF-2A	.131 .123	3.33 3.12	.109	2.77		

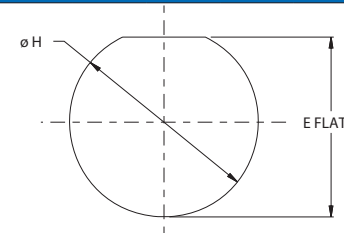
MATERIAL / FINISH OPTIONS	
AB	Marine Bronze, unplated, 1000 hrs. salt spray, -65°C to +175°C, conductive
NF	Aluminum, cadmium O.D. over electroless nickel, 500 hr. salt spray, -65°C to +175°C, conductive
ME	Aluminum, electroless nickel, 48 hr. salt spray, -65°C to +200°C, conductive, RoHS materials
TZ	Aluminum, tin-zinc green-gold over electroless nickel, 500 hr. salt spray, -65°C to +175°C, conductive, AMS 2434 Type 2, RoHS materials
ZR	Aluminum, zinc nickel-black, 500 hr. salt spray, -65°C to +175°C, conductive, RoHS materials
Z1	Stainless Steel, passivated, 48 hr. salt spray, -55°C to +200°C, conductive, RoHS materials
Wave spring = Stainless steel / passivated	
Insulator = high-grade rigid dielectric • Seals, grommet = fluorosilicone blend	

GLENAIR SERIES 260

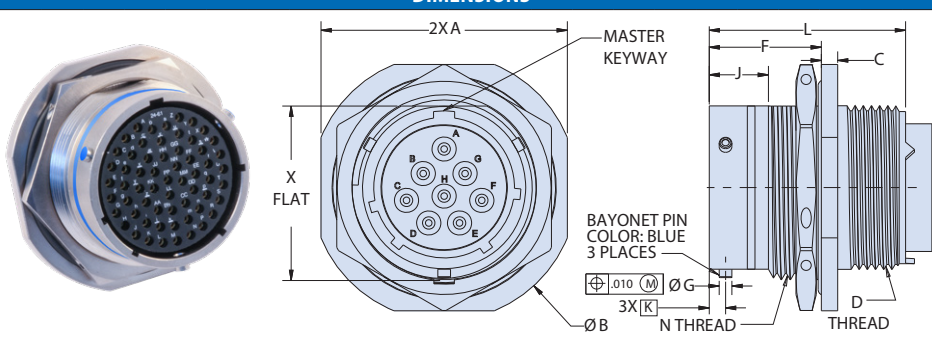
MIL-DTL-26482 Series 2 Type

260-002-74 Jam-nut receptacle

CONTACT ARRANGEMENT			
How-to-Order Code	Size / Quantity		
	20	16	12
8-2	2		
8-3	3		
8-4	4		
8-33	3		
8-98	3		
10-6	6		
10-98	6		
12-3		3	
12-8	8		
12-10	10		
14-4			4
14-5		5	
14-9	5		4
14-12	8	4	
14-15	14	1	
14-18	18		
14-19	19		
14-22	1		4
16-8		8	
16-14	8		6
16-23	22	1	
16-26	26		
16-99	21	2	
18-8			8
18-11		11	
18-30	29	1	
18-32	32		
18-85	5		8
20-16		16	
20-24	24		
20-27	27		
20-39	37	2	
20-41	41		
20-90	3		12
22-12			12
22-19			19
22-21		21	
22-32	32		
22-34	34		
22-41	27	14	
22-55	55		
22-95	26		6
24-19			19
24-27			16
24-31		31	
24-61	61		

PANEL MOUNT				
				
Shell Size	ØH		E Flat	
8	.572	14.53	.536	13.61
10	.697	17.70	.661	16.79
12	.895	22.73	.824	20.93
14	1.010	25.65	.948	24.08
16	1.135	28.83	1.072	27.23
18	1.260	32.00	1.197	30.40
20	1.385	35.18	1.322	33.58
22	1.510	38.35	1.447	36.75
24	1.635	41.53	1.572	39.93

COTS PART NUMBER DEVELOPMENT						
Sample Part Number	260-002-74	ME	16	-26	P	Y
Series / Basic Part No.	260-002-74 = Jam-nut receptacle					
Material/Finish	AB = Aluminum marine bronze, unplated NF = Aluminum, cadmium O.D. over electroless nickel ME = Aluminum, electroless nickel TZ = Aluminum, tin-zinc green-gold over electroless nickel ZR = Aluminum, zinc nickel-black Z1 = Stainless Steel, passivated					
Shell Size	8, 10, 12, 14, 16, 18, 20, 22, 24					
Contact Arrangement	Per MIL-STD-1669; See reference information section for details					
Contact Type	P = Pin, Gold, 500 mating cycles A = Pin insert, less pin contacts S = Socket, Gold, 500 mating cycles B = Socket insert, less socket contacts Connectors supplied with contacts (including spares), insertion/removal tool, and sealing plugs					
Alt. Polarization	W, X, Y, Z, Omit for normal					

DIMENSIONS													
													
Shell Size	A	B	X Flat	N Thread	D Thread	ØG	K Bsc	C	L Max	F	J		
	In	mm	In	mm	In	mm	In	mm	In	mm	In	mm	
8	.954 .923	24.23 23.44	1.078 1.047	27.38 26.59	.525 13.34	.5625-24 UNEF-2A	.5000-20 UNF-2A						
10	1.078 1.047	27.38 26.59	1.203 1.172	30.56 29.77	.650 16.51	.6875-24 UNEF-2A	.6250-24 UNEF-2A						
12	1.266 1.235	32.16 31.37	1.391 1.360	35.33 34.54	.813 20.65	.8750-20 UNEF-2A	.7500-20 UNEF-2A						
14	1.391 1.360	35.33 34.54	1.516 1.485	38.51 37.72	.937 23.80	1.000-20 UNEF-2A	.8750-20 UNEF-2A						
16	1.516 1.485	38.51 37.72	1.641 1.610	41.68 40.89	1.061 26.95	1.1250-18 UNEF-2A	1.000-20 UNEF-2A	.113 .086	2.78 2.18	1.215 30.86	.707 .658	17.96 16.71	
18	1.641 1.610	41.68 40.89	1.766 1.735	44.86 44.07	1.186 30.12	1.2500-18 UNEF-2A	1.0625-18 UNEF-2A						
20	1.828 1.797	46.43 45.64	1.954 1.923	49.63 48.84	1.311 33.30	1.3750-18 UNEF-2A	1.1875-18 UNEF-2A					.378 .346	9.60 8.79
22	1.954 1.923	49.63 48.84	2.078 2.047	52.78 51.99	1.436 36.47	1.5000-18 UNEF-2A	1.3125-18 UNEF-2A	.148 .096	3.76 4.98	1.275 32.39	.772 .721	19.61 18.31	
24	2.078 2.047	52.78 51.99	2.203 2.172	55.96 55.17	1.561 39.65	1.6250-18 UNEF-2A	1.4375-18 UNEF-2A	.131 .123	3.33 3.12	.109 2.77		.405 .379	10.29 9.63

MATERIAL / FINISH OPTIONS	
AB	Marine Bronze, unplated, 1000 hrs. salt spray, -65°C to +175°C, conductive
NF	Aluminum, cadmium O.D. over electroless nickel, 500 hr. salt spray, -65°C to +175°C, conductive
ME	Aluminum, electroless nickel, 48 hr. salt spray, -65°C to +200°C, conductive, RoHS materials
TZ	Aluminum, tin-zinc green-gold over electroless nickel, 500 hr. salt spray, -65°C to +175°C, conductive, AMS 2434 Type 2, RoHS materials
ZR	Aluminum, zinc nickel-black, 500 hr. salt spray, -65°C to +175°C, conductive, RoHS materials
Z1	Stainless Steel, passivated, 48 hr. salt spray, -55°C to +200°C, conductive, RoHS materials
Wave spring = Stainless steel / passivated	
Insulator = high-grade rigid dielectric • Seals, grommet = fluorosilicone blend	

Glenair Mil-Spec Interconnect Technologies



Qualified Products: Glenair is a Mil-Aero connector supplier. Our product quality begins in engineering (the largest team in the high-performance interconnect business) and is realized in our “made in the USA” vertically-integrated manufacturing cells. One of the key ways we ensure both areas are functioning smoothly is to submit designs and manufactured specimens into the military QPL process administered by NAVSEA and the Defense Logistic Agency of the US government. These certification exercises are multi-year activities that test every aspect of an interconnect component’s performance.



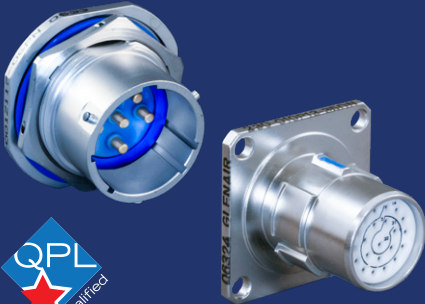
MIL-DTL-38999 Series III Environmental Connectors



MIL-DTL-38999 Series IV Environmental Connectors



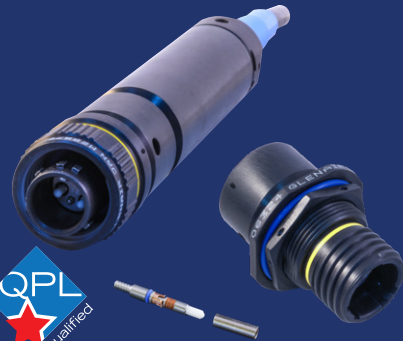
MIL-DTL-28840 Shipboard Connectors and Accessories



MIL-DTL-38999 Series I, II, III, and IV Hermetic Connectors



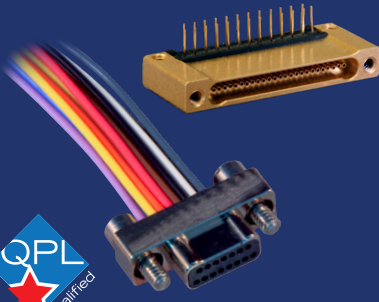
MIL-DTL-24308 Hermetic Connectors



MIL-DTL-28876 Shipboard Fiber Optic



MIL-DTL-83513 Micro-D Connectors and Accessories



MIL-DTL-32139 Nanominiature Connectors and Accessories



MIL-DTL-29504 Fiber Optic Termini and AS39029 Electrical Contacts



MISSION-CRITICAL INTERCONNECT SOLUTIONS

Glenair, Inc.

1211 Air Way • Glendale, California • 91201-2497

Telephone: 818-247-6000 • Fax: 818-500-9912 • sales@glenair.com

www.glenair.com

Glenair East

20 Sterling Drive
Wallingford, CT
06492

Telephone:
203-741-1115
Facsimile:
203-741-0053
sales@glenair.com

Glenair UK Ltd

40 Lower Oakham Way
Oakham Business Park
Mansfield, Notts
NG18 5BY England

Telephone:
+44-1623-638100
Facsimile:
+44-1623-638111
sales@glenair.co.uk

Glenair Microway Systems

7000 North Lawndale Avenue
Lincolnwood, IL
60712

Telephone:
847-679-8833
Facsimile:
847-679-8849

Glenair Nordic AB

Gustav III:s Boulevard 42
SE-169 27 Solna
Sweden

Telephone:
+46-8-50550000
sales@glenair.se

Glenair GmbH

Schaberweg 28
61348 Bad Homburg
Germany

Telephone:
06172 / 68 16 0
Facsimile:
06172 / 68 16 90
info@glenair.de

Glenair Iberica S.L.

Av. De Manoteras, 24 – 2º
28050 Madrid
Spain

Telephone:
+34 915 562 687
sales@glenair.es

Glenair Italia S.p.A.

Via Del Lavoro, 7
40057 Quarto Inferiore –
Granarolo dell'Emilia
Bologna, Italy

Telephone:
+39-051-782811
Facsimile:
+39-051-782259
info@glenair.it

Glenair France SARL

7, Avenue Parmentier
Immeuble Central Parc #2
31200 Toulouse
France

Telephone:
+33-5-34-40-97-40
Facsimile:
+33-5-61-47-86-10
sales@glenair.fr

Glenair Korea

6-21 Tapsil-ro 58beon-gil
Giheung-gu, Yongin-si
Gyeonggi-do
Republic of Korea

Telephone:
+82-07-5067-2437
Facsimile:
+82-504-375-4549
sales@glenair.kr

Glenair Japan

40F, Nagoya Lucent Tower,
6-1, Ushijima-cho,
Nishi-ku, Nagoya, 451-6040
Japan

Telephone:
+81-52-569-2521
Facsimile:
+81-52-569-2523
sales@glenair.jp