

MISSION-CRITICAL
INTERCONNECT
SOLUTIONS



SPRING-ACTION

ProSeal™ Protective Covers

Foolproof · environmental · for circular and rectangular military / aerospace connectors

SEPTEMBER 2019

SPRING-ACTION PROTECTIVE COVERS



IP67 and IP68
environmental protective
connector covers for
frequent mate/demate
applications in military
defense / aerospace.



High-performance military and commercial interconnect applications employ protective covers to seal unmated receptacles from sand, dust, and fluid ingress, as well as other forms of environmental and mechanical damage. ProSeal spring-action environmental protective covers are attached directly to panels and electronic equipment housings to enhance the reliability and foolproof performance of mounted I/O connectors—particularly in applications that see a high number of mate/demate cycles. Spring-action ProSeal protective covers are available for every military QPL and Glenair signature connector series, and are supplied in two styles for dust, spray, and fluid immersion protection (IP67) as well as for full environmental (water jet) applications (IP68).

- Anti-vibration and shock spring-action performance
- Dust- and spray-tight (IP67) and full environmental (IP68) designs with self-aligning environmental seals
- Jam nut and wall mount receptacle configurations
- Positive spring-action in closed position, locks open for convenient mate/demate
- Compatible with a broad range of mil-standard/ aerospace connectors including D38999 Series I, II, III; Mighty Mouse Series 801, 804, 805, and 806; M24308 and more



SPRING ACTION

ProSeal™ environmental connector covers



For mission-critical mil-aero applications
Innovative features and benefits

ROBUST ENVIRONMENTAL SEALING



Self-aligning gimbal-action face seal



Anti-vibration and shock spring-action performance



Full environmental threaded / twist-lock seal

RUGGED MECHANICAL PERFORMANCE



Dual-action mechanism: cover locks in open position and holds tight in closed position



ProSeal cover shares connector mounting holes and hardware

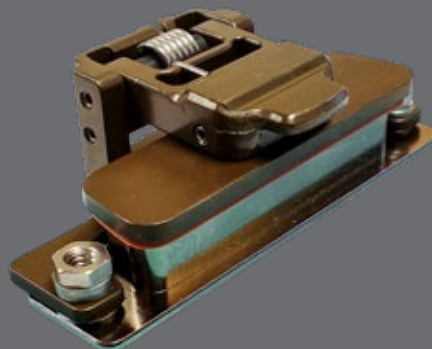


Jam nut and wall mount configurations available in all styles

VERSATILITY OF DESIGN



Suitable for all circular designs including commercial USB / RJ45 interfaces



Rectangular connector designs with convenient thumb tabs




Low-profile non-locking designs for use with recessed quick-disconnect connectors

SPRING ACTION
ProSeal™ environmental connector covers
Product selection guide




GENERAL INFORMATION, PRODUCT SPECIFICATIONS, AND PERFORMANCE DATA	
Mil-Spec to ProSeal Cross-Reference	Page 4
ProSeal IP Ratings	Page 5
Compliance Matrix Outlines for Full Environmental	Page 6
Compliance Matrix Outlines for Dust and Immersion Resistant	Page 7

MIL-DTL-5015, MIL-DTL-83723 SERIES II COVERS




667-450
 Threaded closure seal, full environmental, MIL-DTL-5015, MS3100 and MS3400
 Front or rear connector panel mount, wall mount or jam nut style
 Page 8




667-451
 Pressure seal, dust and immersion resistant, MIL-DTL-5015, MS3100 and MS3400
 Front or rear connector panel mount, wall mount or jam nut style
 Page 10

MIL-DTL-5015, VG95234 REVERSE-BAYONET COVERS




667-488
 Pressure seal, dust and immersion resistant, MIL-DTL-5015, ITS31030 and GT030
 Rear connector panel mount, wall mount style
 Page 12

MIL-DTL-26482 COVERS




667-472
 Pressure seal, dust and immersion resistant, MIL-DTL-26482, Series 1 and 2
 Front or rear connector panel mount, wall mount or jam nut style
 Page 14


MIL-DTL-38999 COVERS, SERIES I, II, III




667-467
 Pressure seal, dust and immersion resistant, D38999 Series I, front or rear connector panel mount, wall mount or jam nut style
 Page 16



667-447
 Pressure seal, dust and immersion resistant, D38999 Series II, MS27472, front or rear connector panel mount, wall mount or jam nut style
 Page 18



667-448
 Threaded closure seal, full environmental, D38999 Series III, front or rear connector panel mount, wall mount or jam nut style
 Page 20



667-449
 Pressure seal, dust and immersion resistant, D38999 Series III, front or rear connector panel mount, wall mount or jam nut style
 Page 22

SPRING ACTION ProSeal™ environmental connector covers



Product selection guide

SERIES 80 MIGHTY MOUSE / SERIES 806 MIL-AERO COVERS



667-497
Pressure seal, dust and immersion resistant, Jam Nut, 801 Series, front or rear connector mount, wall mount style Page 24



667-509
Threaded closure seal, full environmental, 801 Series, front or rear connector mount, wall mount style Page 26



667-387
Pressure seal, dust and immersion resistant, Jam Nut, 804 Series, rear-mount jam nut style Page 28



667-392
Pressure seal, dust and immersion resistant, 804 Series rear wall mount connector Page 30



667-424
Pressure seal, dust and immersion resistant, Wall Mount, 805 Series, front or rear connector mount, wall mount or jam nut style Page 32



667-462
Threaded closure seal, full environmental, 805 Series, front or rear connector mount, wall mount or jam nut style Page 34



667-511
Pressure seal, dust and immersion resistant, Series 806 Mil-Aero, front or rear connector mount, wall mount or jam nut style Page 36



667-512
Threaded closure seal, full environmental, Series 806 Mil-Aero, front or rear connector mount, wall mount or jam nut style Page 38

D-SUBMINIATURE M24308 / SERIES 28 HIPER-D COVERS



667-466
Pressure seal, dust and spray resistant, MIL-DTL-24308, front or rear connector mount Page 40



667-479
Pressure seal, dust and spray resistant, Series 28 HiPer-D, front or rear connector mount Page 42

SERIES 79 COVERS



667-486
Pressure seal, dust and spray resistant, rear-mount Series 79 connector with environmental seal to panel Page 44



667-513
Pressure seal, dust and spray resistant Series 79, front or rear connector mount Page 46

SPECIALTY USB CONNECTOR COVER



667-431
Pressure seal, full environmental protection, positive spring load, rear connector mount Page 48



Mil-standard to ProSeal part number cross-reference

MILITARY CONNECTOR STANDARD TO PRO-SEAL PART NUMBER X-REF			
MILITARY CONNECTOR OR CONNECTOR SERIES	CONNECTOR PART NO.	DESCRIPTION	PROSEAL PART NUMBER
MIL-DTL 5015 MIL-DTL-83723 SERIES II	MS3100	Wall Mount Receptacle	667-450 667-451
	MS3102	Box Mount Receptacle	
	MS3103	Wall Mount Receptacle	
	MS3400	Wall Mount Receptacle	
	MS3402	Box Mount Receptacle	
	MS3404	Jam Nut Receptacle	
	MS3412	Box Mount Receptacle, Threaded Skirt	
	MS3450	Wall Mount Receptacle	
	MS3451	In-Line Receptacle	
	MS3452	Box Mount Receptacle	
	MS3454	Jam Nut Receptacle	
	/19	Wall Mount Receptacle	
	/20	Wall Mount Receptacle	
	/21	Box Mount Receptacle	
/22	Box Mount Receptacle		
MIL-DTL-5015 VG 95234	N/A	Reverse Bayonet	667-488
MIL-DTL-26482	MS3110	Wall Mount Receptacle	667-472
	MS3114	Jam Nut Receptacle	
	MS3120	Wall Mount Receptacle	
	MS3121	In-Line Receptacle	
	MS3122	Box Mount Receptacle	
	MS3470	Wall Mount Receptacle	
MIL-DTL-38999 SERIES I	MS27466	Wall Mount Receptacle	667-467
	MS27468	Jam Nut Receptacle	
	MS27496	Box Mount Receptacle	
MIL-DTL-38999 SERIES II	MS27472	Wall Mount Receptacle	667-447
	MS27474	Jam Nut Receptacle	
	MS27475	Wall Mount Receptacle	
	MS27476	Box Mount Receptacle	
	MS27477	Jam Nut Receptacle	
	MS27478	Solder Mount Receptacle	
	MS27497	Wall Mount Receptacle, Back Panel Mount	
	MS27499	Box Mount Receptacle	
	MS27508	Box Mount Receptacle, Back Panel Mount	
MS27513	Box Mount Receptacle, Long Grommet		
MIL-DTL-38999 SERIES III	/20	Wall Mount Receptacle	667-448 667-449
	/21	Box Mount Receptacle	
	/23	Jam Nut Receptacle	
	/24	Jam Nut Receptacle	
801 SERIES	801-009-02	Mighty Mouse Double-Start ACME Thread Receptacle, Flange Mount, with Banding Platform	667-497 667-509
	801-009-07	Mighty Mouse Double-Start ACME Thread Receptacle, Jam-Nut, with Banding Platform	
	801-010-02	Mighty Mouse Double-Start ACME Thread Receptacle, Flange-Mount, with Accessory Threads	
	801-010-07	Mighty Mouse Double-Start ACME Thread Receptacle, Jam-Nut, with Accessory Threads	
804 SERIES	804-003-07	Push-Pull Rear Panel Mount Receptacle to PC-Tail or Solder Cup	667-387 667-392
	804-005-07	Push-Pull Rear Panel Mount Receptacle to PC-Tail or Solder Cup	
	2330-0400	Push-Pull Rear Panel Mount Receptacle RJ45 Jack to PC-Tail	
	2330-0401	Push-Pull Rear Panel Mount Receptacle USB 2.0 Jack to PC-Tail	
805 SERIES	805-00*-02	Mighty Mouse Triple Start ACME Thread, Wall Mount Receptacle	667-424 667-462
	805-00*-07	Mighty Mouse Triple Start ACME Thread, Jam Nut Receptacle	
	805-301	Mighty Mouse, Super Seal with RJ45	
	805-341	Mighty Mouse, Super Seal with USB 2.0 Type A	
806 SERIES	806-013	Series 806 Mil-Aero Square Flange Receptacle	667-511
	806-020	Series 806 Mil-Aero Jam Nut Receptacle	667-512

SPRING ACTION ProSeal™ environmental connector covers



IP ratings

ProSeal Part Number	Dust-Tight No Ingress of Dust with Underpressure	Water Resistant Shower Spray at 200 mm	Water Resistant Nozzle Ø6.3 mm At 2.5 m	Water Resistant Nozzle Ø12.5 mm At 2.5 m	Water Proof Immersion Tank At 1.0 m for 30 min.	Water Proof Immersion Tank at 10.0 m for 30 min.	Water Proof Random Vibration with Shower
IP Rating	IP6X	IPX4	IPX5	IPX6	IPX7	IPX8	N/A
667-450	✓	✓	✓	✓	✓	✓	✓
667-451	✓	✓			✓		
667-488	✓	✓			✓		
667-472	✓	✓			✓		
667-467	✓	✓			✓		
667-447	✓	✓			✓		
667-448	✓	✓	✓	✓	✓	✓	✓
667-449	✓	✓			✓		
667-497	✓	✓			✓		
667-509	✓	✓	✓	✓	✓	✓	✓
667-387	✓	✓			✓		
667-392	✓	✓			✓		
667-424	✓	✓			✓		
667-462	✓	✓	✓	✓	✓	✓	✓
667-511	✓	✓			✓		
667-512	✓	✓	✓	✓	✓	✓	✓
667-466	✓	✓			✓		
667-479	✓	✓			✓		
667-486	✓	✓			✓		
667-513	✓	✓			✓		
667-431	✓	✓			✓		

* Connector-dependent (potted connector)

SPRING ACTION
ProSeal™ environmental connector covers



Qualification test compliance

Qualification Test Compliance for Full Environmental ProSeal Covers			
Qualification Requirement	Test Purpose	Test Method	Vendor Compliance
Salt Spray 500 hours Finsihes: OD Cadmium (NF) No Plating Composite (XB)	Assess Corrosion Resistance	EIA-364-26	Pass
Salt/S02 336 hours Finsihes: OD Cadmium (NF) No Plating Composite (XB)	Assess Corrosion Resistance	EIA-364-26	Pass
Durability (1500 Cycles) Lifting the arm at a rate of 300 cycles per hour.	Assess Robustness of Spring Action	MIL-DTL-38999M Ser.III paragraph 4.5.8.1	Pass
External Humidity	Assess Withstanding of Humid Atmosphere	QTP-665 para 11.3 RTCA/DO-160G, category C-External Humidity Environment (Section 6.0)	Pass
IP6X Dust-tight	Assess Withstanding Ingress of Dust	IEC 60529 para 13.4 and 13.5	Pass
IPX7-Temporary Water Immersion	Assess Ingress of Water During Temporary Immersion in Water	IEC 60529 para 14.2.7	Pass
IPX6-Water Jet 12.5mm diameter, distance 2.5 m to 3	Assess Ingress of Water After Water Jet/Stream	IEC 60529 para 14.2.6	Pass
IPX5-Water jet hose nozzle 6.3 mm diameter, distance 2,5m to 3m	Assess Ingress of Water After Water Jet/Stream	IEC 60529 para 14.2.5	Pass
IPX4-Water Spray numeral 3 Spray ± 180° from vertical	Assess Ingress of Water After Water Oscillating Spray	IEC 60529 para 14.2.4, FIG 5, TABLE 8	Pass
Sine Vibration	Test for the purpose of assuring no disengagement of test covers, no backing off of the coupling mechanism or opening of the arm, no evidence of cracking/ breaking, or loosening of parts during and after vibration simulating helicopter operating vibration.	MIL-STD-810G, Method 514.7, Annex E, Category 24 for Helicopters	Pass
Sine Vibration with Temperature (200°C)	Test for the purpose of assuring no disengagement of test covers, no backing off of the coupling mechanism or opening of the arm, no evidence of cracking/ breaking, or loosening of parts during and after vibration simulating helicopter operating vibration.	MIL-STD-38999M Series III para 4.5.23.2.1	Pass
Random Vibration with Rain	Test for the purpose of assuring no disengagement of test covers, no backing off of the coupling mechanism or opening of the arm, no evidence of cracking/ breaking, or loosening of parts during and after vibration simulating helicopter operating vibration. Assess signs of water ingress.	MIL-DTL-38999M Ser.III paragraph 4.5.23.4 In accordance with EIA- 364-28	Pass
Fluid Immersion	Test for detrimental damage (cracking, peeling, dissolution) after immersion in several fluids,	EIA 364-10	Pass



Qualification Test Compliance for Dust and Immersion Resistant ProSeal Covers			
Qualification Requirement	Test Purpose	Test Method	Vendor Compliance
Salt Spray 500 hours Finihes: OD Cadmium (NF) No Plating Composite (XB)	Assess Corrosion Resistance	EIA-364-26	Pass
Salt/S02 336 hours Finihes: OD Cadmium (NF) No Plating Composite (XB)	Assess Corrosion Resistance	EIA-364-26	Pass
Durability (1500 Cycles) Lifting the arm at a rate of 300 cycles per hour.	Assess Robustness of Spring Action	MIL-DTL-38999M Ser.III paragraph 4.5.8.1	Pass
External Humidity	Assess Withstanding of Humid Atmosphere	QTP-665 para 11.3 RTCA/DO-160G, category C-External Humidity Environment (Section 6.0)	Pass
IP6X Dust-tight	Assess Withstanding Ingress of Dust	IEC 60529 para 13.4 and 13.5	Pass
IPX7-Temporary Water Immersion	Assess Ingress of Water During Temporary Immersion in Water	IEC 60529 para 14.2.7	Pass
IPX4-Water Spray numeral 3 Spray ± 180° from vertical	Assess Ingress of Water After Water Oscillating Spray	IEC 60529 para 14.2.4, FIG 5, TABLE 8	Pass
Sine Vibration	Test for the purpose of assuring no disengagement of test covers, no backing off of the coupling mechanism or opening of the arm, no evidence of cracking/ breaking, or loosening of parts during and after vibration simulating helicopter operating vibration.	MIL-STD-810G, Method 514.7, Annex E, Category 24 for Helicopters	Pass
Sine Vibration with Temperature (200°C)	Test for the purpose of assuring no disengagement of test covers, no backing off of the coupling mechanism or opening of the arm, no evidence of cracking/ breaking, or loosening of parts during and after vibration simulating helicopter operating vibration.	MIL-STD-38999M Series III para 4.5.23.2.1	Pass
Random Vibration with Rain	Test for the purpose of assuring no disengagement of test covers, no backing off of the coupling mechanism or opening of the arm, no evidence of cracking/ breaking, or loosening of parts during and after vibration simulating helicopter operating vibration. Assess signs of water ingress.	MIL-DTL-38999M Ser.III paragraph 4.5.23.4 In accordance with EIA- 364-28	Pass
Fluid Immersion	Test for detrimental damage (cracking, peeling, dissolution) after immersion in several fluids,	EIA 364-10	Pass

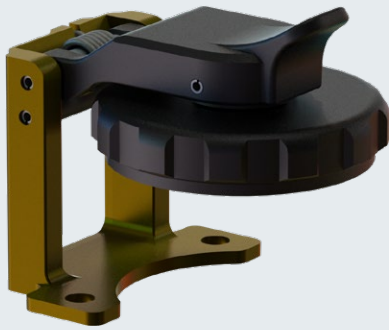
SPRING ACTION

ProSeal™ environmental connector covers

for MIL-DTL-5015, MS 3100, and MS3400 connectors
Threaded closure seal, full environmental



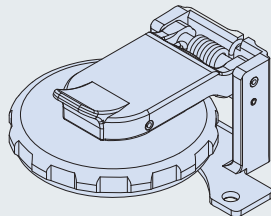
667-450 PROSEAL PROTECTIVE COVER FOR MIL-DTL-5015, MS3100, AND MS3400 CONNECTORS



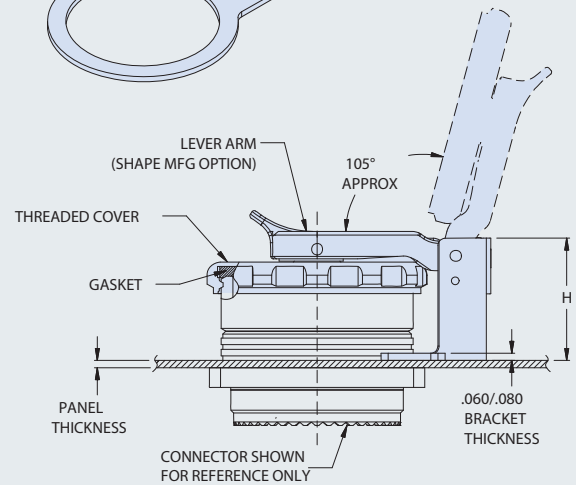
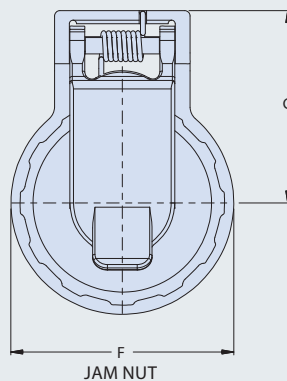
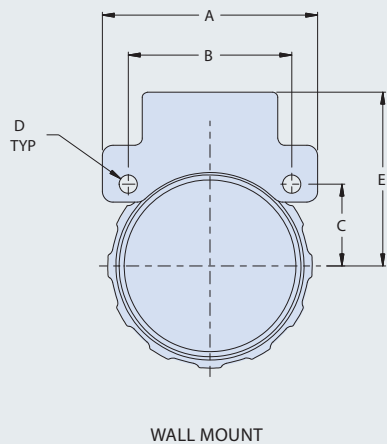
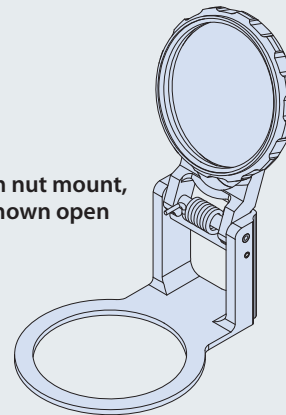
How to Order 667-450					
Sample Part Number	667-450	NF	06	T1	W
Series	ProSeal protective cover for MIL-DTL-5015, MS3100, and MS3400				
Material / Finish	See Table II				
Dash No. /Shell Size	See Table I				
Panel Thickness	See Table III				
Type of Mounting	J = Jam Nut Mount Receptacle W = Wall Mount Receptacle				

- Threaded closure
- Full environmental protection
- Self-aligning
- Positive spring-action in closed position. Locks open at approximately 105° from receptacle face.

Wall mount, shown closed



Jam nut mount, shown open



MATERIAL / FINISH

Cover, Lever Arm, Gimbal - Thermoplastic / Black
Bracket - see Table II
Spring / Pin / Rivet - 300 Series SST / Passivate
Sleeve - Delrin
Gasket - Silicone (optional)



Table I: Dimensions																	
Dash No.	Shell Size	A max		B ±.015 (.38)		C ±.015 (.38)		D ±.008 (.20)		E max		F ±.031 (.79)		G max		H max	
		in	mm	in	mm	in	mm	in	mm	in	mm	in	mm	in	mm	in	mm
01	8S	.967	24.56	0.594	15.0	.297	7.54	.128	3.25	.841	21.36	.890	22.61	.841	21.36	.993	25.22
02	10S, 10SL	1.061	26.95	0.719	18.26	.360	9.14	.134	3.40	.903	22.94	.937	23.80	.893	22.68	.993	25.22
03	12	1.156	29.36	0.812	20.62	.406	10.31	.134	3.40	.966	24.54	1.062	26.97	.966	24.54	1.243	31.57
04	12S	1.156	29.36	0.812	20.62	.406	10.31	.134	3.40	.966	24.54	1.062	26.97	.966	24.54	.993	25.22
05	14	1.250	31.75	0.906	23.01	.453	11.51	.134	3.40	1.034	26.26	1.188	30.18	1.034	26.26	1.243	31.57
06	14S	1.250	31.75	0.906	23.01	.453	11.51	.134	3.40	1.034	26.26	1.188	30.18	1.034	26.26	.993	25.22
07	16	1.341	33.89	0.969	24.61	.485	12.32	.134	3.40	1.113	28.27	1.375	34.93	1.133	28.78	1.243	31.57
08	16S	1.341	33.89	0.969	24.61	.485	12.32	.134	3.40	1.113	28.27	1.375	34.93	1.133	28.78	.993	25.22
09	18	1.467	37.26	1.062	26.97	.531	13.49	.134	3.40	1.149	29.18	1.625	41.28	1.149	29.18	1.243	31.57
10	20	1.593	40.46	1.156	29.36	.578	14.68	.134	3.40	1.365	34.67	1.750	44.45	1.365	34.67	1.328	33.73
11	22	1.719	43.66	1.250	31.75	.625	15.88	.134	3.40	1.429	36.30	2.000	50.80	1.429	36.30	1.328	33.73
12	24	1.871	47.52	1.375	34.93	.688	17.48	.154	3.91	1.491	37.87	2.150	54.61	1.491	37.87	1.328	33.73
13	28	2.042	51.87	1.562	39.67	.781	19.84	.154	3.91	1.656	42.06	2.309	58.65	1.708	43.38	1.328	33.73
14	32	2.280	57.91	1.750	44.45	.875	22.23	.177	4.50	1.743	44.27	2.562	65.07	1.867	47.42	1.390	35.31
15	36	2.530	64.26	1.938	49.23	.969	24.61	.177	4.50	1.977	50.22	2.875	73.03	2.124	53.95	1.390	35.31
16	40	2.780	70.61	2.188	55.58	1.094	27.79	.177	4.50	2.196	55.78	3.145	79.88	2.214	53.95	1.390	35.31

Table II: Material and Finish		
Sym	Material	Finish
MT	Aluminum	Nickel-PTFE
ZR		Zinc-Nickel, Black (Tri-Valent CR)
M		Electroless Nickel
NF		Cad Plate / Olive Drab over Electroless Nickel
C		Anodize / Black
UC		Zinc Cobalt / Black

Table III: Panel Thickness		
Dash No.	Panel Thickness* ±.030 (.76)	
	in	mm
T0	.000	.00
T1	.062	1.57
T2	.125	3.18

*Jam nut mount is not available with panel thickness T0

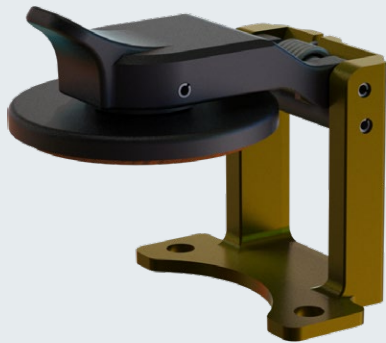
SPRING ACTION

ProSeal™ environmental connector covers



for MIL-DTL-5015, MS 3100, and MS3400 connectors
Pressure seal, dust and immersion resistant

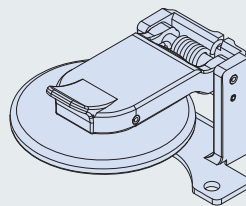
667-451 PROSEAL PROTECTIVE COVER FOR MIL-DTL-5015, MS3100, AND MS3400 CONNECTORS



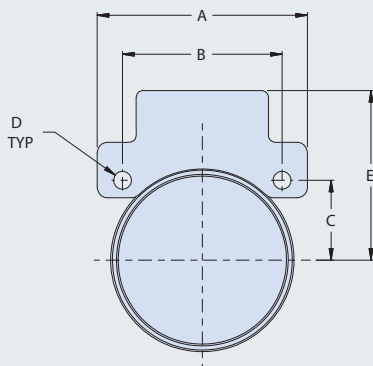
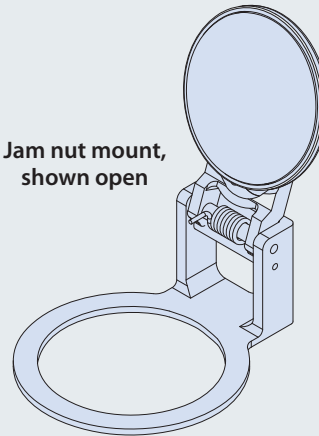
How to Order 667-451					
Sample Part Number	667-451	NF	06	T1	W
Series	ProSeal protective cover for MIL-DTL-5015, MS3100, and MS3400				
Material / Finish	See Table II				
Dash No. /Shell Size	See Table I				
Panel Thickness	See Table III				
Type of Mounting	J = Jam Nut Mount Receptacle W = Wall Mount Receptacle				

- Pressure seal, dust and immersion resistant
- Self-aligning
- Positive spring-action in closed position. Locks open at approximately 105° from receptacle face.

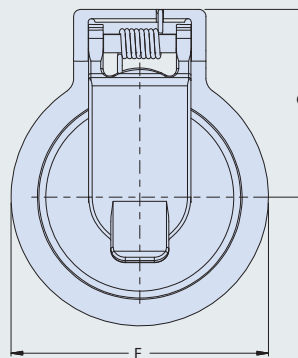
Wall mount, shown closed



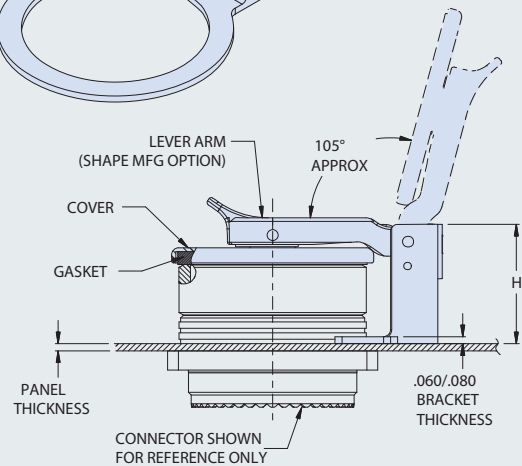
Jam nut mount, shown open



WALL MOUNT



JAM NUT



MATERIAL / FINISH

Cover, Lever Arm, Gimbal - Thermoplastic / Black
Bracket - see Table II
Spring / Pin / Rivet - SST / Passivate
Sleeve - Delrin
Gasket - Silicone (optional)

SPRING ACTION

ProSeal™ environmental connector covers

for MIL-DTL-5015, MS 3100, and MS3400 connectors
Pressure seal, dust and immersion resistant



5015 • 83723 Series III

Table I: Dimensions																	
Dash No.	Shell Size	A max		B ±.015 (.38)		C ±.015 (.38)		D ±.008 (.20)		E max		F ±.031 (.79)		G max		H max	
		in	mm	in	mm	in	mm	in	mm	in	mm	in	mm	in	mm	in	mm
01	8S	.967	24.56	0.594	15.0	.297	7.54	.128	3.25	.841	21.36	.890	22.61	.841	21.36	.993	25.22
02	10S, 10SL	1.061	26.95	0.719	18.26	.360	9.14	.134	3.40	.903	22.94	.937	23.80	.893	22.68	.993	25.22
03	12	1.156	29.36	0.812	20.62	.406	10.31	.134	3.40	.966	24.54	1.062	26.97	.966	24.54	1.243	31.57
04	12S	1.156	29.36	0.812	20.62	.406	10.31	.134	3.40	.966	24.54	1.062	26.97	.966	24.54	.993	25.22
05	14	1.250	31.75	0.906	23.01	.453	11.51	.134	3.40	1.034	26.26	1.188	30.18	1.034	26.26	1.243	31.57
06	14S	1.250	31.75	0.906	23.01	.453	11.51	.134	3.40	1.034	26.26	1.188	30.18	1.034	26.26	.993	25.22
07	16	1.341	33.89	0.969	24.61	.485	12.32	.134	3.40	1.113	28.27	1.375	34.93	1.133	28.78	1.243	31.57
08	16S	1.341	33.89	0.969	24.61	.485	12.32	.134	3.40	1.113	28.27	1.375	34.93	1.133	28.78	.993	25.22
09	18	1.467	37.26	1.062	26.97	.531	13.49	.134	3.40	1.149	29.18	1.625	41.28	1.149	29.18	1.243	31.57
10	20	1.593	40.46	1.156	29.36	.578	14.68	.134	3.40	1.365	34.67	1.750	44.45	1.365	34.67	1.328	33.73
11	22	1.719	43.66	1.250	31.75	.625	15.88	.134	3.40	1.429	36.30	2.000	50.80	1.429	36.30	1.328	33.73
12	24	1.871	47.52	1.375	34.93	.688	17.48	.154	3.91	1.491	37.87	2.150	54.61	1.491	37.87	1.328	33.73
13	28	2.042	51.87	1.562	39.67	.781	19.84	.154	3.91	1.656	42.06	2.309	58.65	1.708	43.38	1.328	33.73
14	32	2.280	57.91	1.750	44.45	.875	22.23	.177	4.50	1.743	44.27	2.562	65.07	1.867	47.42	1.390	35.31
15	36	2.530	64.26	1.938	49.23	.969	24.61	.177	4.50	1.977	50.22	2.875	73.03	2.124	53.95	1.390	35.31
16	40	2.780	70.61	2.188	55.58	1.094	27.79	.177	4.50	2.196	55.78	3.145	79.88	2.214	53.95	1.390	35.31

Table II: Material and Finish		
Sym	Material	Finish
MT	Aluminum	Nickel-PTFE
ZR		Zinc-Nickel, Black (Tri-Valent CR)
M		Electroless Nickel
NF		Cad Plate / Olive Drab over Electroless Nickel
C		Anodize / Black
UC		Zinc Cobalt / Black

Table III: Panel Thickness		
Dash No.	Panel Thickness* ±.030 (.76)	
	in	mm
T0	.000	.00
T1	.062	1.57
T2	.125	3.18

*Jam nut mount is not available with panel thickness T0

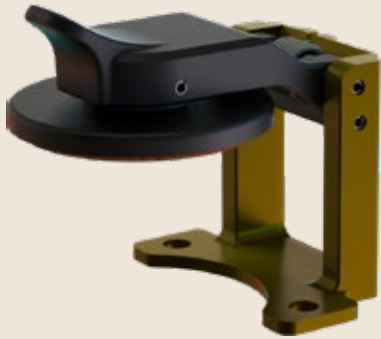
SPRING ACTION

ProSeal™ environmental connector covers

for MIL-DTL-5015, ITS31030 and GT030 connectors
Pressure seal, dust and immersion resistant



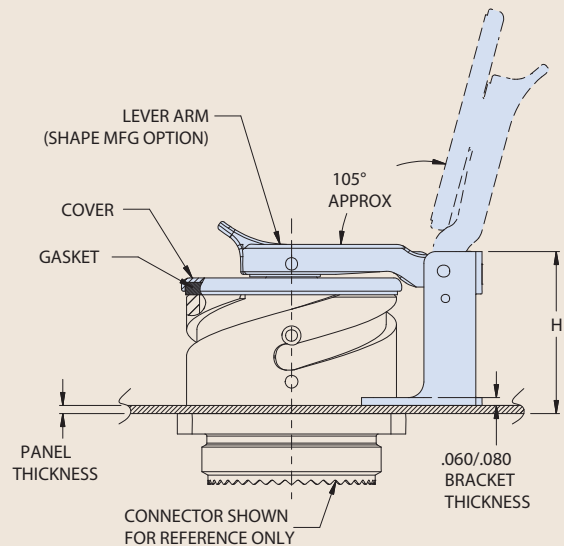
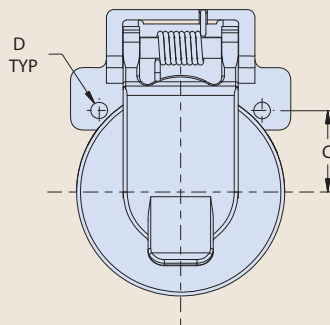
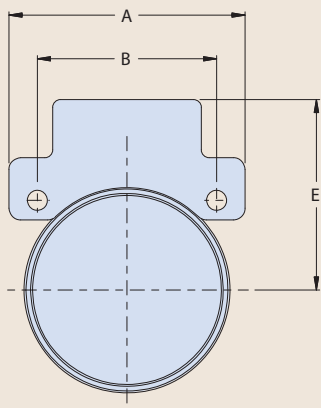
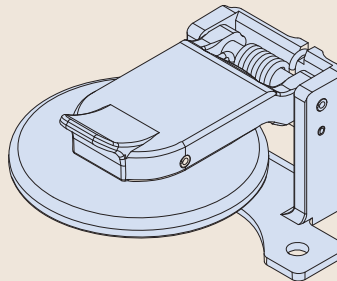
667-488 PROSEAL PROTECTIVE COVER FOR MIL-DTL-5015, ITS31030, AND GT030 CONNECTORS



How to Order 667-488					
Sample Part Number	667-488	NF	06	T1	W
Series	ProSeal protective cover for MIL-DTL-5015, ITS31030, and GT030 connectors				
Material / Finish	See Table II				
Dash No. /Shell Size	See Table I				
Panel Thickness	See Table III				
Type of Mounting	W = Wall Mount Receptacle				

- Pressure seal, dust and immersion resistant
- Self-aligning
- Positive spring-action in closed position. Locks open at approximately 105° from receptacle face.

Wall mount, shown closed



MATERIAL / FINISH

Cover, Lever Arm, Gimbal - Thermoplastic / Black
Bracket - see Table II
Spring / Pin / Rivet - SST / Passivate
Sleeve - Delrin
Gasket - Silicone (optional)

SPRING ACTION

ProSeal™ environmental connector covers

for MIL-DTL-5015, ITS31030 and GT030 connectors
Pressure seal, dust and immersion resistant



Table I: Dimensions													
Dash No.	Shell Size	A max		B ±.015 (.38)		C ±.015 (.38)		D ±.008 (.20)		E max		H max	
		in	mm	in	mm	in	mm	in	mm	in	mm	in	mm
02	10S, 10SL	1.061	26.95	0.719	18.26	.360	9.14	.134	3.40	.903	22.94	1.133	28.78
06	14S	1.250	31.75	0.906	23.01	.453	11.51	.134	3.40	1.034	26.26	1.133	28.78
07	16	1.341	33.89	0.969	24.61	.485	12.32	.134	3.40	1.113	28.27	1.323	33.60
08	16S	1.341	33.89	0.969	24.61	.485	12.32	.134	3.40	1.113	28.27	1.133	28.78
09	18	1.467	37.26	1.062	26.97	.531	13.49	.134	3.40	1.149	29.18	1.384	35.15
10	20	1.593	40.46	1.156	29.36	.578	14.68	.134	3.40	1.365	34.67	1.469	37.31
11	22	1.719	43.66	1.250	31.75	.625	15.88	.134	3.40	1.429	36.30	1.469	37.31
12	24	1.871	47.52	1.375	34.93	.688	17.48	.154	3.91	1.491	37.87	1.407	35.74
13	28	2.042	51.87	1.562	39.67	.781	19.84	.154	3.91	1.589	40.36	1.447	36.75
14	32	2.230	56.64	1.750	44.45	.875	22.23	.177	4.50	1.714	43.54	1.446	36.73

5015 · VG95234

Table II: Material and Finish		
Sym	Material	Finish
MT	Aluminum	Nickel-PTFE
ZR		Zinc-Nickel, Black (Tri-Valent CR)
M		Electroless Nickel
NF		Cad Plate / Olive Drab over Electroless Nickel
C		Anodize / Black
UC		Zinc Cobalt / Black

Table III: Panel Thickness		
Dash No.	Panel Thickness* ±.030 (.76)	
	in	mm
T1	.062	1.57
T2	.125	3.18

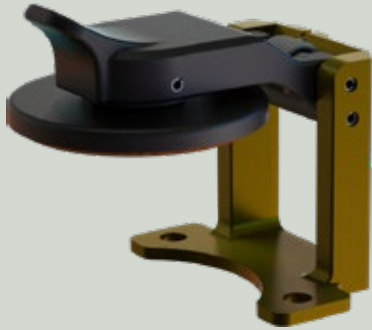
SPRING ACTION

ProSeal™ environmental connector covers

for MIL-DTL-26482 Series I and II connectors
Pressure seal, dust and immersion resistant

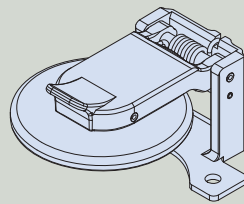


667-472 PROSEAL PROTECTIVE COVER FOR MIL-DTL-26482 SERIES I AND II CONNECTORS

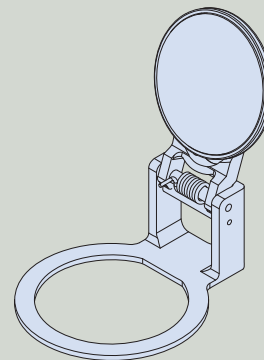


How to Order 667-472					
Sample Part Number	667-472	NF	16	T1	W
Series	ProSeal protective cover for MIL-DTL-26482 Series I and II				
Material / Finish	See Table II				
Shell Size	See Table I				
Panel Thickness	See Table III				
Type of Mounting	J = Jam Nut Mount Receptacle (not available with Panel Thickness T0) W = Wall Mount Receptacle				

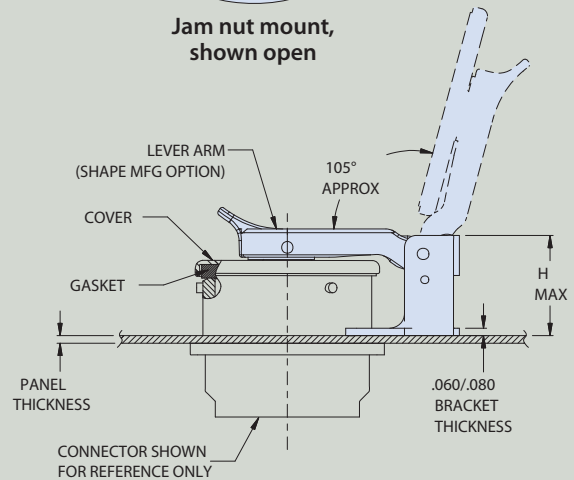
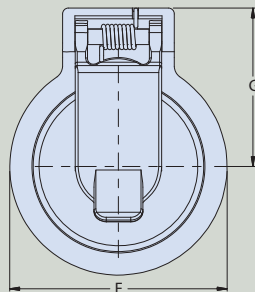
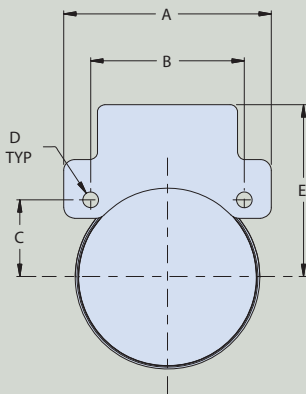
- Pressure seal, dust and immersion resistant
- Self-aligning
- Positive spring-action in closed position. Locks open at approximately 105° from receptacle face.



Wall mount, shown closed



Jam nut mount, shown open



MATERIAL / FINISH

Cover, Lever Arm, Gimbal - Thermoplastic / Black
Bracket - see Table II
Spring / Pin / Rivet - 300 Series SST / Passivate
Sleeve - Delrin
Gasket - Silicone (optional)



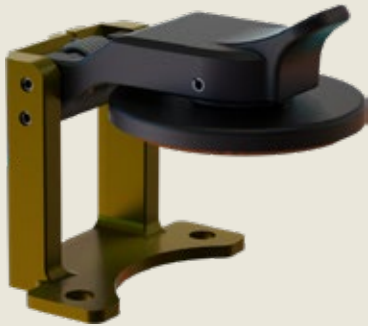
Table I: Dimensions														
Shell Size	A Dim max		B Dim		C Dim		D ±.010 (.25)		E max		F ±.031 (.79)		G max	
	in	mm	in	mm	in	mm	in	mm	in	mm	in	mm	in	mm
08	.967	24.56	0.594	15.0	.297	7.54	.120	3.05	.841	21.36	.850	21.59	.826	20.98
10	1.061	26.95	0.719	18.26	.360	9.14	.120	3.05	.903	22.94	1.000	25.40	.901	22.89
12	1.156	29.36	0.812	20.62	.406	10.31	.120	3.05	.966	24.54	1.188	30.18	.995	25.27
14	1.250	31.75	0.906	23.01	.453	11.51	.120	3.05	1.034	26.26	1.310	33.27	1.056	26.82
16	1.341	33.89	0.969	24.61	.485	12.32	.120	3.05	1.113	28.27	1.500	38.10	1.151	29.24
18	1.467	37.26	1.062	26.97	.531	13.49	.120	3.05	1.149	29.18	1.625	41.28	1.514	38.46
20	1.593	40.46	1.156	29.36	.578	14.68	.120	3.05	1.365	34.67	1.750	44.45	1.410	35.81
22	1.719	43.66	1.250	31.75	.625	15.88	.120	3.05	1.429	36.30	1.875	47.63	1.473	37.41
24	1.841	46.76	1.375	34.93	.688	17.48	.147	3.73	1.491	37.87	2.062	52.37	1.566	39.78

Table II: Material and Finish		
Sym	Material	Finish
MT	Aluminum	Nickel-PTFE
ZR		Zinc-Nickel, Black (Tri-Valent CR)
M		Electroless Nickel
NF		Cad Plate / Olive Drab over Electroless Nickel
C		Anodize / Black
UC		Zinc Cobalt / Black

Table III: Panel Thickness							
Dash No.	Panel Thickness ±.030 (.76)		Shell Size	H Max			
	in	mm		Wall Mount		Jam Nut Mount	
				in	mm	in	mm
T0	.000	.00	08-18	.718	18.24	N/A	
			20-22	.946	24.03		
			24	.987	25.07		
T1	.062	1.57	08-18	.656	16.66	.935	23.75
			20-22	.876	22.25	1.238	31.45
			24	.925	23.50	1.341	34.06
T2	.125	3.18	08-18	N/A	N/A	.875	22.23
			20-22	.814	20.68	1.178	29.92
			24	.863	21.92	1.218	30.94

MIL-DTL-26482

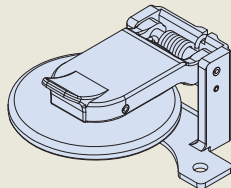
667-467 PROSEAL PROTECTIVE COVER FOR D38999 SERIES I CONNECTORS



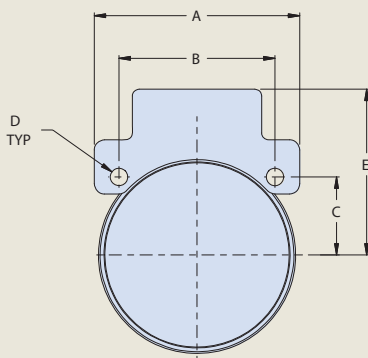
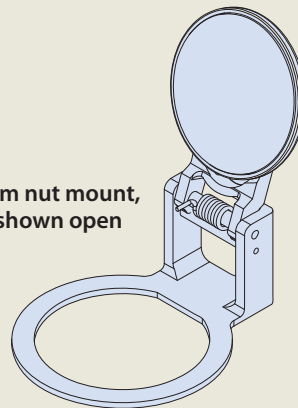
How to Order 667-467					
Sample Part Number	667-467	NF	17	T1	J
Series	ProSeal protective cover for D38999 Series I connectors				
Material / Finish	See Table II				
Shell Size	See Table I				
Panel Thickness	See Table III				
Type of Mounting	J = Jam Nut Mount Receptacle W = Wall Mount Receptacle				

- Pressure seal, dust and immersion resistant
- Self-aligning
- Positive spring-action in closed position. Locks open at approximately 105° from receptacle face.

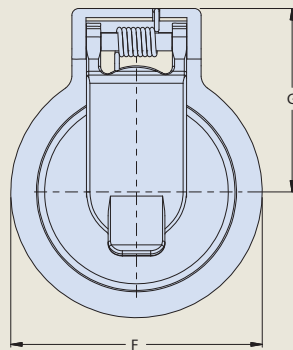
Wall mount, shown closed



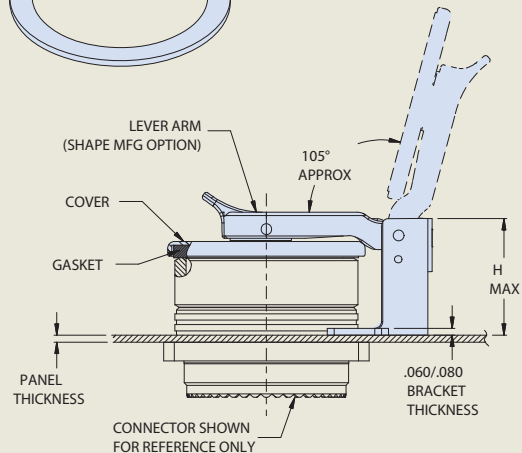
Jam nut mount, shown open



WALL MOUNT



JAM NUT



MATERIAL / FINISH

- Cover, Lever Arm, Gimbal - Thermoplastic / black
- Bracket - See Table II
- Spring / Pin / Rivet - 300 Series SST / Passivate
- Sleeve - Delrin
- Gasket - Silicone (optional)



Table I: Dimensions														
Shell Size	A Dim max		B Dim		C Dim		D ±.008 (.20)		E ±.031 (.79)		F Dim max		J Dia max	
	in	mm	in	mm	in	mm	in	mm	in	mm	in	mm	in	mm
09	0.937	23.80	0.719	18.26	0.360	9.14	0.128	3.25	1.031	26.19	0.913	23.19	0.727	18.47
11	1.031	26.19	0.812	20.62	0.406	10.31	0.128	3.25	1.125	28.58	0.961	24.41	0.853	21.67
13	1.126	28.60	0.906	23.01	0.453	11.51	0.128	3.25	1.375	34.93	1.083	27.51	1.003	25.48
15	1.220	30.99	0.969	24.61	0.485	12.32	0.128	3.25	1.560	39.62	1.178	29.92	1.128	28.65
17	1.311	33.30	1.062	26.97	0.531	13.49	0.128	3.25	1.625	41.28	1.211	30.76	1.253	31.83
19	1.437	36.50	1.156	29.36	0.578	14.68	0.128	3.25	1.750	44.45	1.273	32.33	1.360	34.54
21	1.563	39.70	1.250	31.75	0.625	15.88	0.128	3.25	2.000	50.80	1.538	39.07	1.485	37.72
23	1.689	42.90	1.375	34.93	0.688	17.48	0.128	3.25	2.150	54.61	1.614	41.00	1.610	40.89
25	1.841	46.76	1.500	38.10	0.750	19.05	0.128	3.25	2.218	56.34	1.647	41.83	1.735	44.07

Table II: Material and Finish		
Sym	Material	Finish
MT	Aluminum	Nickel-PTFE
ZR		Zinc-Nickel, Black (Tri-Valent CR)
M		Electroless Nickel
NF		Cad Plate / Olive Drab over Electroless Nickel
C		Anodize / Black
UC		Zinc Cobalt / Black

Table III: Panel Thickness							
Dash No.	Panel Thickness* ±.030 (.76)		Shell Size	G ± .06			
	in	mm		Jam Nut Mount		Wall Mount	
				in	mm	in	mm
T0	.000	.00	09-19	N/A	N/A	1.039	26.39
			21-25	N/A	N/A	1.094	27.79
T1	.062	1.57	09-19	1.041	26.44	0.977	24.82
			21-25	1.126	28.60	1.032	26.21
T2	.125	3.18	09-19	N/A	N/A	0.915	23.24
			21-25	N/A	N/A	0.970	24.64

*Jam nut mount is not available with panel thicknesses T0 and T2

MIL-DTL-38999 Series I

SPRING ACTION

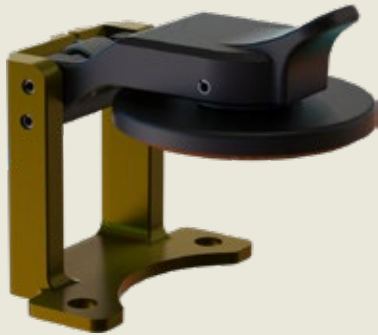
ProSeal™ environmental connector covers

for MIL-DTL-38999 Series II connectors

Pressure seal, dust and immersion resistant



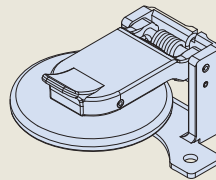
667-447 PROSEAL PROTECTIVE COVER FOR D38999 SERIES II / M3450 CONNECTORS



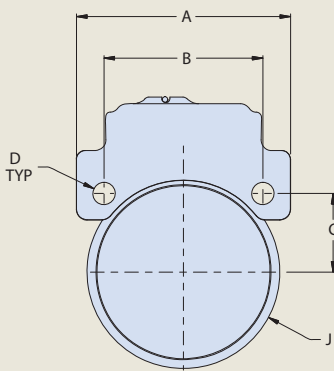
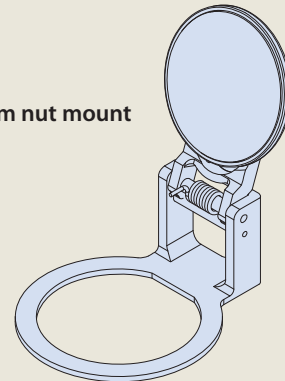
How to Order 667-447					
Sample Part Number	667-447	NF	18	T1	W
Series	ProSeal protective cover for D38999 Series II / M3450 connectors				
Material / Finish	See Table II				
Shell Size	See Table I				
Panel Thickness	See Table III				
Type of Mounting	J = Jam Nut Mount Receptacle W = Wall Mount Receptacle with slotted holes				

- Pressure seal, dust and immersion resistant
- Self-aligning
- Positive spring-action in closed position. Locks open at approximately 105° from receptacle face.

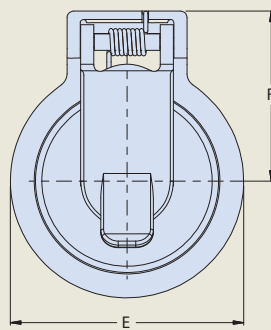
Wall mount



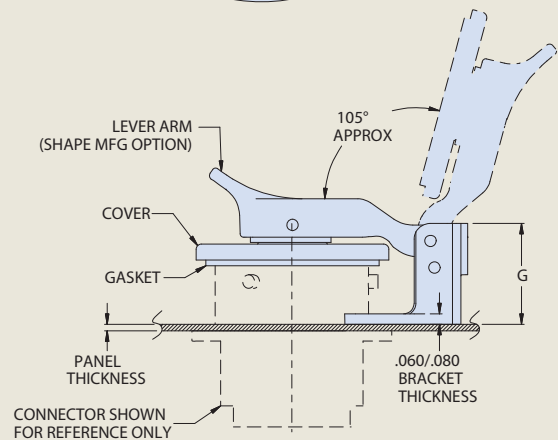
Jam nut mount



WALL MOUNT



JAM NUT



MATERIAL / FINISH

- Cover, Lever Arm, Gimbal - Thermoplastic / Black
- Bracket - see Table II
- Spring / Roll Pin - Stainless Steel / Passivate
- Sleeve - Delrin
- Gasket - Silicone (optional)



Table I: Dimensions														
Shell Size	A Dim max		B Dim		C Dim		D ±.008 (.20)		E ±.031 (.79)		F ±.031 (.79)		H ±.005 (.13)	
	in	mm	in	mm	in	mm	in	mm	in	mm	in	mm	in	mm
08	.967	24.56	0.719	18.26	0.360	9.14	0.128	3.25	1.031	26.19	.883	22.43	0.727	18.47
10	1.061	26.95	0.812	20.62	0.406	10.31	0.128	3.25	1.125	28.58	.931	23.65	0.853	21.67
12	1.156	29.36	0.906	23.01	0.453	11.51	0.128	3.25	1.375	34.93	1.055	26.80	1.003	25.48
14	1.250	31.75	0.969	24.61	0.485	12.32	0.128	3.25	1.560	39.62	1.148	29.16	1.128	28.65
16	1.341	33.89	1.062	26.97	0.531	13.49	0.128	3.25	1.625	41.28	1.181	30.00	1.253	31.83
18	1.477	37.52	1.156	29.36	0.578	14.68	0.128	3.25	1.750	44.45	1.243	31.57	1.360	34.54
20	1.593	40.46	1.250	31.75	0.625	15.88	0.128	3.25	2.000	50.80	1.507	38.28	1.485	37.72
22	1.719	43.66	1.375	34.93	0.688	17.48	0.154	3.91	2.150	54.61	1.584	40.23	1.610	40.89
24	1.841	46.76	1.500	38.10	0.750	19.05	0.154	3.91	2.218	56.34	1.617	41.07	1.735	44.07

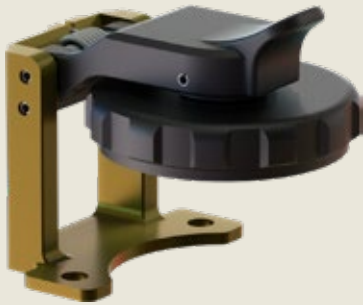
Table II: Material and Finish		
Sym	Material	Finish
MT	Aluminum	Nickel-PTFE
ZR		Zinc-Nickel, Black (Tri-Valent CR)
M		Electroless Nickel
NF		Cad Plate / Olive Drab over Electroless Nickel
C		Anodize / Black
UC		Zinc Cobalt / Black

Table III: Panel Thickness							
Dash No.	Panel Thickness* ±.030 (.76)		Shell Size	G ± .06			
	in	mm		Jam Nut Mount		Wall Mount	
				in	mm	in	mm
T0	.000	.00	08-18	N/A	N/A	.563	14.30
			20-24	N/A	N/A	.648	16.46
T1	.062	1.57	08-18	.619	15.72	.626	15.90
			20-24	.730	18.54	.711	18.06
T2	.125	3.18	08-18	N/A	N/A	.564	14.33
			20-24	N/A	N/A	.649	16.48

*Jam nut mount is not available with panel thickness T0

MIL-DTL-38999 Series II

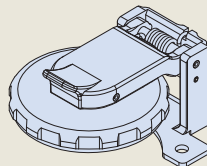
667-448 PROSEAL PROTECTIVE COVER FOR D38999 SERIES III CONNECTORS



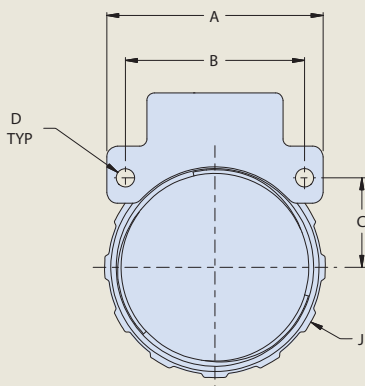
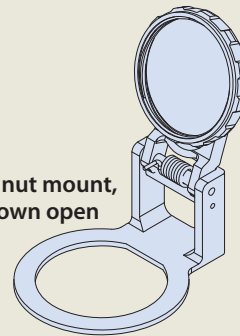
How to Order 667-448					
Sample Part Number	667-448	NF	17	T1	J
Series	ProSeal protective cover for D38999 Series III connectors				
Material / Finish	See Table II				
Shell Size	See Table I				
Panel Thickness	See Table III				
Type of Mounting	J = Jam Nut Mount Receptacle W = Wall Mount Receptacle				

- Threaded closure
- Full environmental protection
- Self-aligning
- Positive spring-action in closed position. Locks open at approximately 105° from receptacle face.

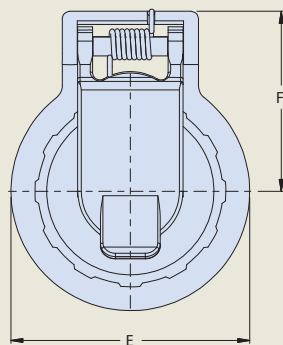
Wall mount, shown closed



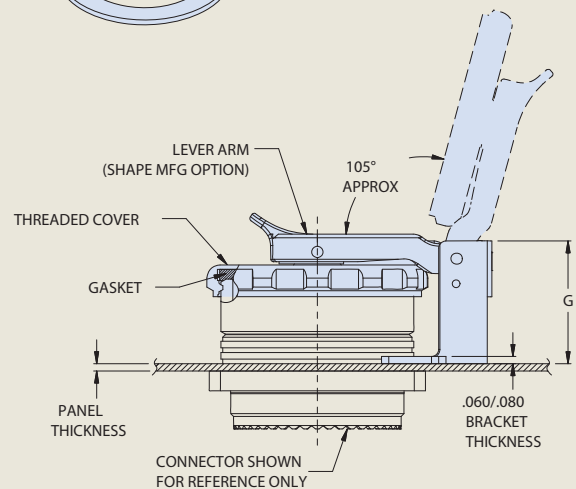
Jam nut mount, shown open



WALL MOUNT



JAM NUT



MATERIAL / FINISH

- Cover, Lever Arm, Gimbal - Thermoplastic / Black
- Bracket - see Table II
- Spring / Pin / Rivet - 300 Series SST / Passivate
- Sleeve - Delrin
- Gasket - Silicone (optional)



Table I: Dimensions														
Shell Size	A Dim max		B Dim		C Dim		D ±.008 (.20)		E ±.031 (.79)		F Dim max		J Dia max	
	in	mm	in	mm	in	mm	in	mm	in	mm	in	mm	in	mm
09	0.937	23.80	0.719	18.26	0.360	9.14	0.128	3.25	1.031	26.19	.913	23.19	.872	22.15
11	1.031	26.19	0.812	20.62	0.406	10.31	0.128	3.25	1.125	28.58	.961	24.41	.988	25.10
13	1.126	28.60	0.906	23.01	0.453	11.51	0.128	3.25	1.375	34.93	1.083	27.51	1.129	28.68
15	1.220	30.99	0.969	24.61	0.485	12.32	0.128	3.25	1.560	39.62	1.178	29.92	1.280	32.51
17	1.311	33.30	1.062	26.97	0.531	13.49	0.128	3.25	1.625	41.28	1.211	30.76	1.441	36.60
19	1.437	36.50	1.156	29.36	0.578	14.68	0.128	3.25	1.750	44.45	1.273	32.33	1.499	38.07
21	1.563	39.70	1.250	31.75	0.625	15.88	0.128	3.25	2.000	50.80	1.538	39.07	1.630	41.40
23	1.689	42.90	1.375	34.93	0.688	17.48	0.154	3.91	2.150	54.61	1.614	41.00	1.755	44.58
25	1.841	46.76	1.500	38.10	0.750	19.05	0.154	3.91	2.218	56.34	1.647	41.83	1.880	47.75

Table II: Material and Finish		
Sym	Material	Finish
MT	Aluminum	Nickel-PTFE
ZR		Zinc-Nickel, Black (Tri-Valent CR)
M		Electroless Nickel
NF		Cad Plate / Olive Drab over Electroless Nickel
C		Anodize / Black
UC		Zinc Cobalt / Black

Table III: Panel Thickness							
Dash No.	Panel Thickness* ±.030 (.76)		Shell Size	G ± .06			
	in	mm		Jam Nut Mount		Wall Mount	
				in	mm	in	mm
T0	.000	.00	09-19	N/A	N/A	1.039	26.39
			21-25	N/A	N/A	1.094	27.79
T1	.062	1.57	09-19	1.041	26.44	0.977	24.82
			21-25	1.126	28.60	1.032	26.21
T2	.125	3.18	09-19	0.979	24.87	0.915	23.24
			21-25	1.064	27.03	0.970	24.64

*Jam nut mount is not available with panel thickness T0

38999 Series III / SuperNine

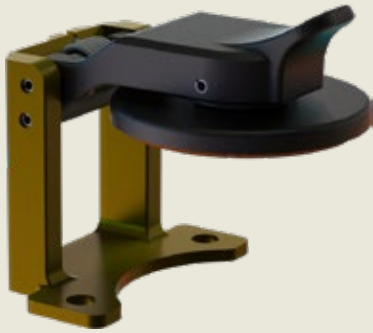
SPRING ACTION

ProSeal™ environmental connector covers



for MIL-DTL-38999 Series III / SuperNine® connectors
Pressure seal, dust and immersion resistant

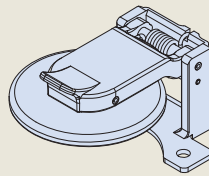
667-449 PROSEAL PROTECTIVE COVER FOR D38999 SERIES III CONNECTORS



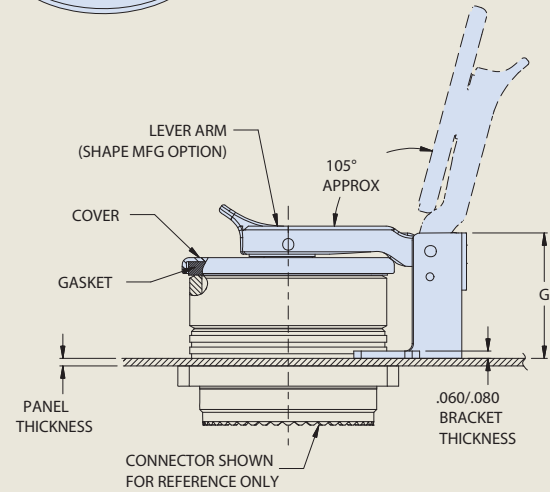
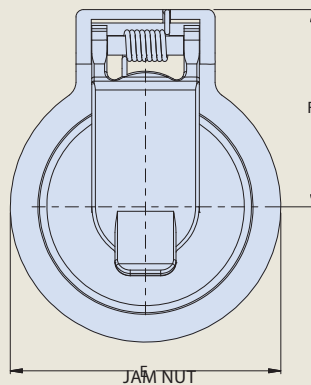
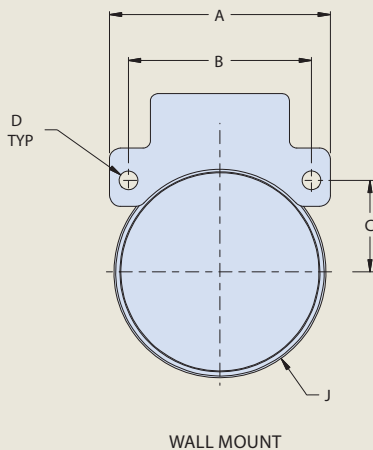
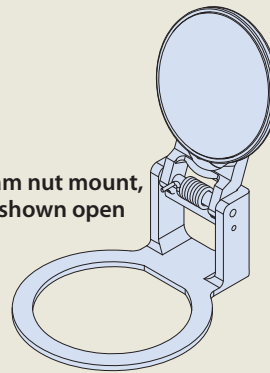
How to Order 667-449					
Sample Part Number	667-449	NF	17	T1	J
Series	ProSeal protective cover for D38999 Series III connectors				
Material / Finish	See Table II				
Shell Size	See Table I				
Panel Thickness	See Table III				
Type of Mounting	J = Jam Nut Mount Receptacle W = Wall Mount Receptacle				

- Pressure seal, dust and immersion resistant
- Self-aligning
- Positive spring-action in closed position. Locks open at approximately 105° from receptacle face.

Wall mount, shown closed



Jam nut mount, shown open



MATERIAL / FINISH

Cover, Lever Arm, Gimbal - Thermoplastic / Black
Bracket - see Table II
Spring / Pin / Rivet - 300 Series SST / Passivate
Sleeve - Delrin
Gasket - Silicone (optional)



Table I: Dimensions														
Shell Size	A Dim max		B Dim		C Dim		D ±.008 (.20)		E ±.031 (.79)		F Dim max		J Dia max	
	in	mm	in	mm	in	mm	in	mm	in	mm	in	mm	in	mm
09	0.937	23.80	0.719	18.26	0.360	9.14	0.128	3.25	1.031	26.19	.913	23.19	.735	18.67
11	1.031	26.19	0.812	20.62	0.406	10.31	0.128	3.25	1.125	28.58	.961	24.41	.860	21.84
13	1.126	28.60	0.906	23.01	0.453	11.51	0.128	3.25	1.375	34.93	1.083	27.51	.985	25.02
15	1.220	30.99	0.969	24.61	0.485	12.32	0.128	3.25	1.560	39.62	1.178	29.92	1.120	28.45
17	1.311	33.30	1.062	26.97	0.531	13.49	0.128	3.25	1.625	41.28	1.211	30.76	1.280	32.51
19	1.437	36.50	1.156	29.36	0.578	14.68	0.128	3.25	1.750	44.45	1.273	32.33	1.343	34.11
21	1.563	39.70	1.250	31.75	0.625	15.88	0.128	3.25	2.000	50.80	1.538	39.07	1.466	37.24
23	1.689	42.90	1.375	34.93	0.688	17.48	0.154	3.91	2.150	54.61	1.614	41.00	1.593	40.46
25	1.841	46.76	1.500	38.10	0.750	19.05	0.154	3.91	2.218	56.34	1.647	41.83	1.718	43.64

Table II: Material and Finish		
Sym	Material	Finish
MT	Aluminum	Nickel-PTFE
ZR		Zinc-Nickel, Black (Tri-Valent CR)
M		Electroless Nickel
NF		Cad Plate / Olive Drab over Electroless Nickel
C		Anodize / Black
UC		Zinc Cobalt / Black

Table III: Panel Thickness							
Dash No.	Panel Thickness* ±.030 (.76)		Shell Size	G ± .06			
	in	mm		Jam Nut Mount		Wall Mount	
				in	mm	in	mm
T0	.000	.00	09-19	N/A	N/A	1.039	26.39
			21-25	N/A	N/A	1.094	27.79
T1	.062	1.57	09-19	1.041	26.44	0.977	24.82
			21-25	1.126	28.60	1.032	26.21
T2	.125	3.18	09-19	0.979	24.87	0.915	23.24
			21-25	1.064	27.03	0.970	24.64

*Jam nut mount is not available with panel thickness T0

38999 Series III / SuperNine

SPRING ACTION

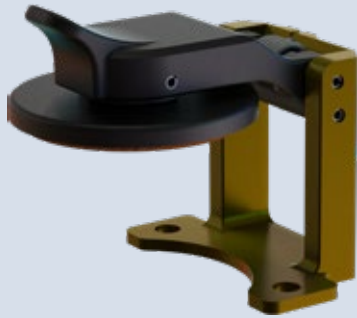
ProSeal™ environmental connector covers



for Mighty Mouse Series 801 connectors

Pressure seal, dust and immersion resistant

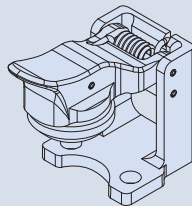
667-497 PROSEAL PROTECTIVE COVER FOR MIGHTY MOUSE SERIES 801 CONNECTORS



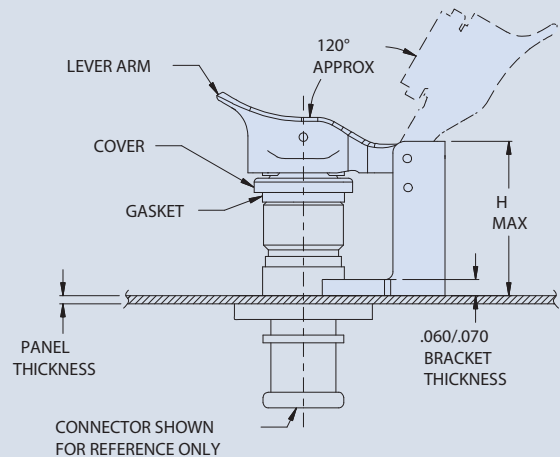
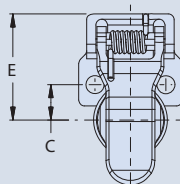
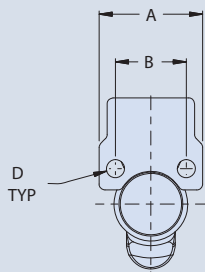
How to Order 667-497					
Sample Part Number	667-497	NF	10	T1	W
Series	ProSeal protective cover for Series 801 Mighty Mouse connectors				
Material / Finish	See Table II				
Shell Size	See Table I				
Panel Thickness	See Table III				
Type of Mounting	W = Wall Mount Receptacle				

- Pressure seal, dust and immersion resistant
- Self-aligning
- Positive spring-action in closed position. Locks open at approximately 120° from receptacle face.

Wall mount, shown closed



Wall mount, shown open



MATERIAL / FINISH

- Cover, Lever Arm, Gimbal - Thermoplastic / Black
- Bracket - see Table II
- Spring / Pin / Rivet - 300 Series SST / Passivate
- Sleeve - Delrin
- Gasket - Silicone (optional)



Table I: Dimensions										
Shell Size	Wall Mount									
	A Dim		B Dim		C Dim		D ±.002 (.05)		E ±.031 (.79)	
	in	mm	in	mm	in	mm	in	mm	in	mm
8	.712	18.08	.545	13.84	.273	6.93	.094	2.39	.651	16.54
9	.851	21.62	.607	15.42	.304	7.72	.128	3.25	.724	18.39
10	.890	22.61	.670	17.02	.335	8.51	.128	3.25	.758	19.25
11	.935	23.75	.715	18.16	.358	9.09	.128	3.25	.781	19.84
13	1.030	26.16	.812	20.62	.406	10.31	.128	3.25	.850	21.59
16	1.219	30.96	.981	24.92	.491	12.47	.128	3.25	1.012	25.70
17	1.280	32.51	1.060	26.92	.530	13.46	.128	3.25	1.043	26.49
19	1.432	36.37	1.191	30.25	.596	15.14	.128	3.25	1.043	26.49
21	1.565	39.75	1.322	33.58	.661	16.79	.128	3.25	1.151	29.24

Consult factory for additional shell sizes

Table II: Material and Finish		
Sym	Material	Finish
MT	Aluminum	Nickel-PTFE
ZR		Zinc-Nickel, Black (Tri-Valent CR)
M		Electroless Nickel
NF		Cad Plate / Olive Drab over Electroless Nickel
C		Anodize / Black
UC		Zinc Cobalt / Black

Table III: Panel Thickness					
Dash No.	Panel Thickness*		Shell Size	H Max	
				Wall Mount	
	in	mm	in	mm	
T0	.000	.00	5-8	.593	15.06
			9-21	.692	17.58
T1	.062	1.57	5-8	.531	13.49
			9-21	.630	16.00

*Cover fits nominally onto panel with .062" (1.57mm) thickness, but will also work for panels as thin as .031" (.79mm)

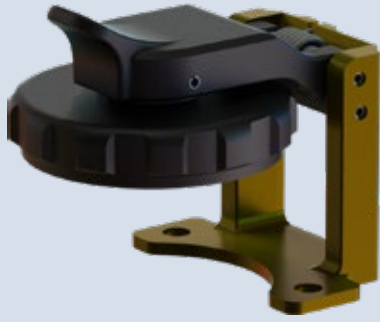
SPRING ACTION

ProSeal™ environmental connector covers



for Mighty Mouse Series 801 connectors
Threaded closure seal, full environmental

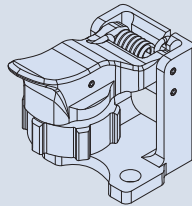
667-509 PROSEAL PROTECTIVE COVER FOR MIGHTY MOUSE SERIES 801 CONNECTORS



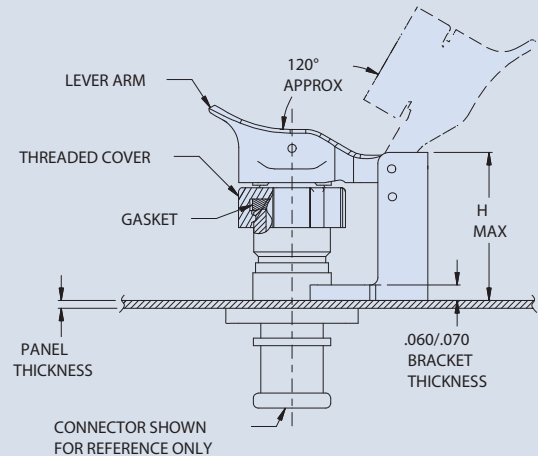
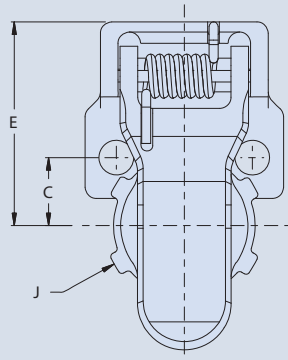
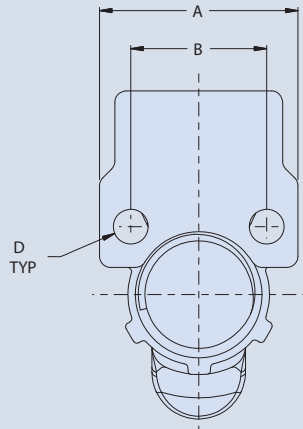
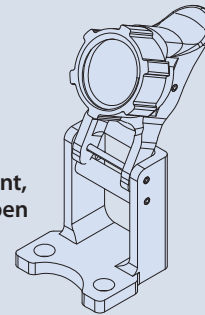
How to Order 667-509					
Sample Part Number	667-509	NF	10	T1	W
Series	ProSeal protective cover for Series 801 Mighty Mouse connectors				
Material / Finish	See Table II				
Shell Size	See Table I				
Panel Thickness	See Table III				
Type of Mounting	W = Wall Mount Receptacle				

- Threaded closure
- Full environmental protection
- Self-aligning
- Positive spring-action in closed position. Locks open at approximately 120° from receptacle face.

Wall mount, shown closed



Wall mount, shown open



MATERIAL / FINISH

- Cover, Lever Arm, Gimbal - Thermoplastic / Black
- Bracket - see Table II
- Spring / Pin / Rivet - 300 Series SST / Passivate
- Sleeve - Delrin
- Gasket - Silicone (optional)



Table I: Dimensions												
Shell Size	Wall Mount											
	A Dim		B Dim		C Dim		D ±.002 (.05)		E ±.031 (.79)		J Dia max	
	in	mm	in	mm	in	mm	in	mm	in	mm	in	mm
8	.712	18.08	.545	13.84	.273	6.93	.094	2.39	.651	16.54	.651	16.54
9	.851	21.62	.607	15.42	.304	7.72	.128	3.25	.724	18.39	.710	18.03
10	.890	22.61	.670	17.02	.335	8.51	.128	3.25	.758	19.25	.776	19.71
11	.935	23.75	.715	18.16	.358	9.09	.128	3.25	.781	19.84	.842	21.39
13	1.030	26.16	.812	20.62	.406	10.31	.128	3.25	.850	21.59	.968	24.59
16	1.219	30.96	.981	24.92	.491	12.47	.128	3.25	1.012	25.70	1.158	29.41
17	1.280	32.51	1.060	26.92	.530	13.46	.128	3.25	1.043	26.49	1.217	30.91
19	1.432	36.37	1.191	30.25	.596	15.14	.128	3.25	1.043	26.49	1.344	34.14
21	1.565	39.75	1.322	33.58	.661	16.79	.128	3.25	1.151	29.24	1.469	37.31

Consult factory for additional shell sizes

Table II: Material and Finish		
Sym	Material	Finish
MT	Aluminum	Nickel-PTFE
ZR		Zinc-Nickel, Black (Tri-Valent CR)
M		Electroless Nickel
NF		Cad Plate / Olive Drab over Electroless Nickel
C		Anodize / Black
UC		Zinc Cobalt / Black

Table III: Panel Thickness					
Dash No.	Panel Thickness*		Shell Size	H Max	
	in	mm		Wall Mount	
				in	mm
T0	.000	.00	5-8	.593	15.06
			9-21	.692	17.58
T1	.062	1.57	5-8	.531	13.49
			9-21	.630	16.00

*Cover fits nominally onto panel with .062" (1.57mm) thickness, but will also work for panels as thin as .031" (.79mm)

SPRING ACTION

ProSeal™ environmental connector covers



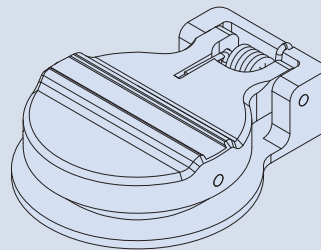
for Mighty Mouse Series 804 Jam Nut connectors
Pressure seal, dust and immersion resistant

667-387 PROSEAL PROTECTIVE COVER FOR MIGHTY MOUSE SERIES 804 JAM NUT CONNECTORS

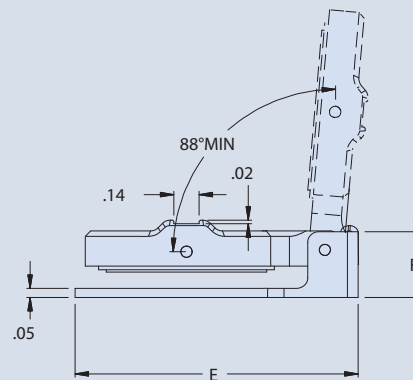
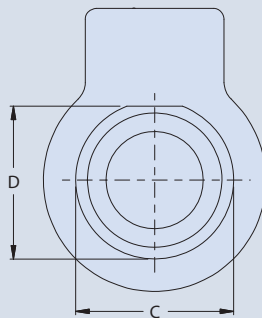
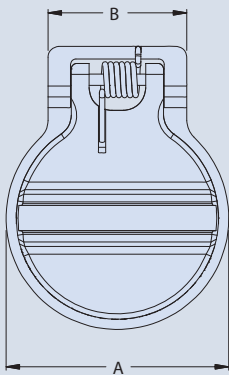
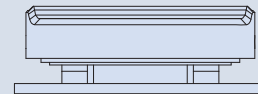


How to Order 667-387				
Sample Part Number	667-387	NF	09	-2
Series	ProSeal protective cover for Series 804 Mighty Mouse Jam Nut connectors			
Material / Finish	See Table II			
Shell Size	See Table I			
Panel Thickness	1 = .063" ±.03 F=.43 2 = .125" ±.03 F=.36			

- Pressure seal, dust and immersion resistant
- Self-aligning
- Positive spring-action in closed position. Opens to 88°, non-locking.



Jam nut mount, shown closed



MATERIAL / FINISH

Cover, Lever Arm, Bracket-Aluminum Alloy/see Table II
Shaft / Spring - CRES / Passivate
Sleeve - Delrin
Gasket - Sponge Silicone

SPRING ACTION

ProSeal™ environmental connector covers

for Mighty Mouse Series 804 Jam Nut connectors
Pressure seal, dust and immersion resistant



Mighty Mouse 804

Table I: Dimensions										
Shell Size	A Dia		B Dim		C Dia		D Flat		E Dim	
	in	mm	in	mm	in	mm	in	mm	in	mm
06	.86	21.84	.70	17.78	.510	12.95	.479/.475	12.17/12.07	1.20	30.48
07	.87	22.10	.77	19.56	.635	16.13	.606/.601	15.39/15.27	1.29	32.77
08	.87	22.10	.77	19.56	.635	16.13	.606/.602	15.39/15.29	1.29	32.77
09	1.05	26.67	.77	19.56	.695	17.65	.667/.663	16.94/16.84	1.35	34.29
10	1.11	28.19	.77	19.56	.760	19.30	.734/.729	18.64/18.52	1.42	36.07
12	1.24	31.50	.77	19.56	.885	22.48	.855/.851	21.72/21.62	1.57	39.88
14	1.36	34.54	.89	22.61	1.010	25.65	.980/.976	24.89/24.79	1.70	43.18
15	1.42	36.07	.89	22.61	1.070	27.18	1.041/1.037	26.44/26.34	1.74	44.20

Consult factory for additional shell sizes

Table II: Material and Finish		
Sym	Material	Finish
M	Aluminum Alloy	Electroless Nickel
NF		Cad Plate / Olive Drab over Electroless Nickel
C		Anodize / Black
ZN		Zinc-Nickel / O.D. over Electroless Nickel
ZR		Zinc-Nickel / Black over Electroless Nickel

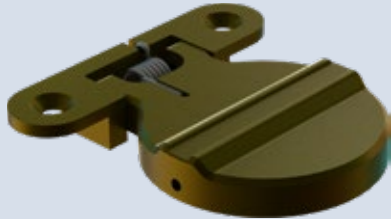
SPRING ACTION

ProSeal™ environmental connector covers



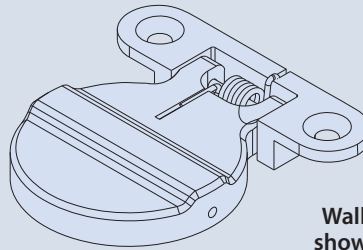
for Mighty Mouse Series 804 Wall Mount connectors
Pressure seal, dust and immersion resistant

667-392 PROSEAL PROTECTIVE COVER FOR MIGHTY MOUSE SERIES 804 WALL MOUNT CONNECTORS

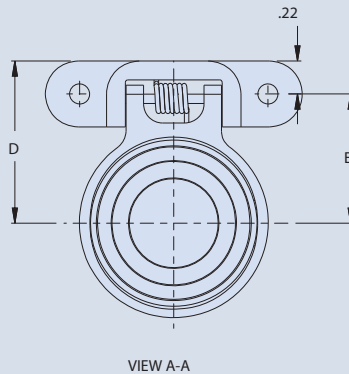
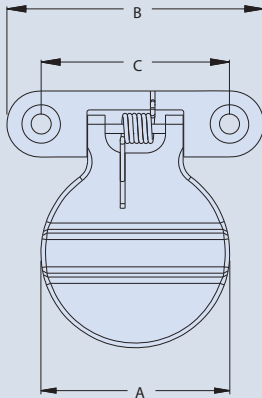


How to Order 667-392			
Sample Part Number	667-392	NF	09
Series	ProSeal protective cover for Series 804 Mighty Mouse Wall Mount connectors		
Material / Finish	See Table II		
Shell Size	See Table I		

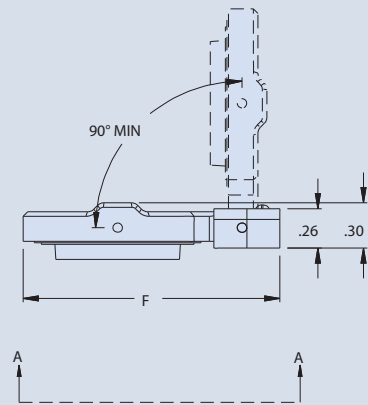
- Pressure seal, dust and immersion resistant
- Self-aligning
- Positive spring-action in closed position. Opens to 90°, non-locking.



Wall mount, shown closed



VIEW A-A



MATERIAL / FINISH

Cover, Lever Arm, Bracket - Aluminum Alloy/see Table II
 Shaft / Spring - CRES / Passivate
 Sleeve - Delrin
 Gasket - Silicone

SPRING ACTION

ProSeal™ environmental connector covers

for Mighty Mouse Series 804 Wall Mount connectors
 Pressure seal, dust and immersion resistant



Mighty Mouse 804

Table I: Dimensions												
Shell Size	A Dia		B Dim		C ±.005		D Dim		E ±.005		F Dim	
	in	mm	in	mm	in	mm	in	mm	in	mm	in	mm
06	.75	19.05	1.51	38.35	1.055	26.80	.84	21.34	.615	15.62	1.17	29.72
07	.87	22.10	1.58	40.13	1.125	28.58	.87	22.10	.640	16.26	1.25	31.75
08	.87	22.10	1.58	40.13	1.125	28.58	.90	22.86	.673	17.09	1.32	33.53
09	.94	23.88	1.58	40.13	1.125	28.58	.90	22.86	.673	17.09	1.32	33.53
10	1.00	25.40	1.58	40.13	1.125	28.58	.94	23.88	.712	18.08	1.39	35.31
12	1.12	28.45	1.58	40.13	1.125	28.58	1.03	26.16	.800	20.32	1.53	38.86
14	1.25	31.75	1.70	43.18	1.245	31.62	1.08	27.43	.855	21.72	1.69	42.93
15	1.31	33.27	1.70	43.18	1.245	31.62	1.10	27.94	.875	22.23	1.74	44.20

Consult factory for additional shell sizes

Table II: Material and Finish		
Sym	Material	Finish
M	Aluminum Alloy	Electroless Nickel
NF		Cad Plate / Olive Drab over Electroless Nickel
C		Anodize / Black
ZN		Zinc-Nickel / O.D. over Electroless Nickel
ZR		Zinc-Nickel / Black over Electroless Nickel

SPRING ACTION

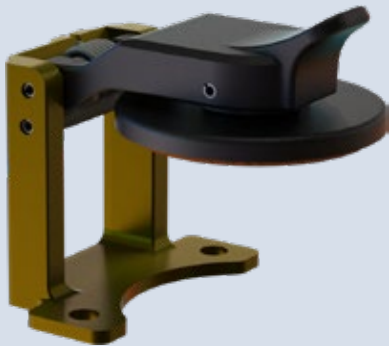
ProSeal™ environmental connector covers

for Mighty Mouse Series 805 connectors

Pressure seal, dust and immersion resistant



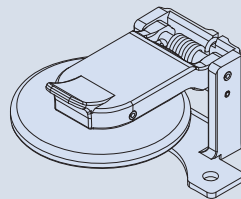
667-424 PROSEAL PROTECTIVE COVER FOR MIGHTY MOUSE SERIES 805 CONNECTORS



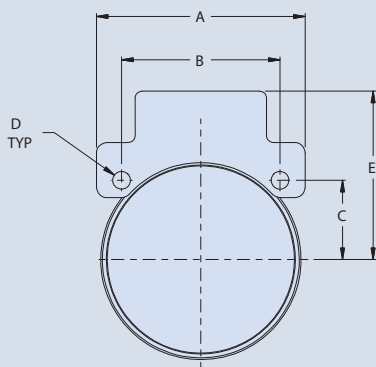
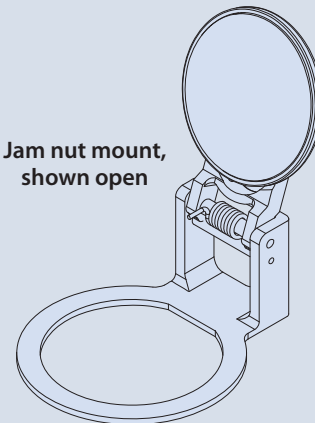
How to Order 667-424					
Sample Part Number	667-424	NF	13	T1	J
Series	ProSeal protective cover for Series 805 Mighty Mouse connectors				
Material / Finish	See Table II				
Shell Size	See Table I				
Panel Thickness	See Table III				
Type of Mounting	J = Jam Nut Mount Receptacle W = Wall Mount Receptacle				

- Pressure seal, dust and immersion resistant
- Self-aligning
- Positive spring-action in closed position. Locks open at approximately 105° from receptacle face.

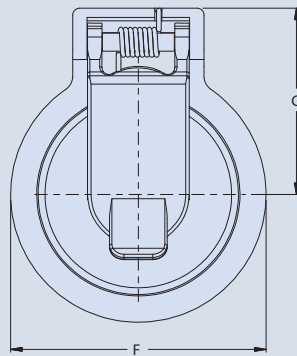
Wall mount, shown closed



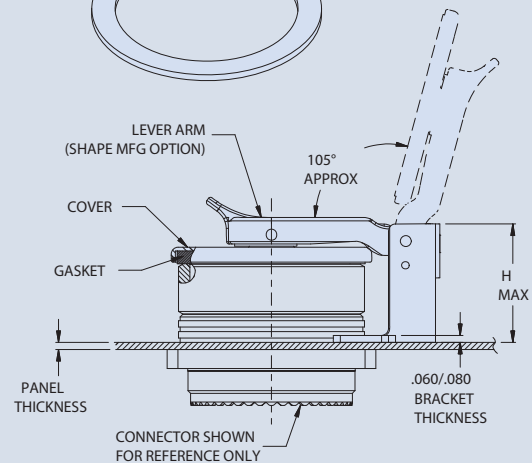
Jam nut mount, shown open



WALL MOUNT



JAM NUT



MATERIAL / FINISH

Cover, Lever Arm, Gimbal-Thermoplastic / Black

Bracket - see Table II

Sping / Pin / Rivet - 300 Series SST / Passivate

Sleeve - Delrin

Gasket - Silicone



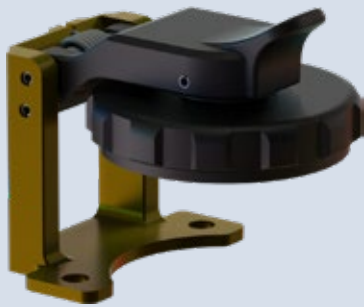
Table I: Dimensions														
Shell Size	Wall Mount										Jam Nut Mount			
	A Dim		B Dim		C Dim		D ±.002 (.05)		E ±.031 (.79)		F ±.031 (.79)		G ±.031 (.79)	
	in	mm	in	mm	in	mm	in	mm	in	mm	in	mm	in	mm
08	.850	21.59	.660	16.76	.330	8.38	.094	2.39	.675	17.15	.768	19.51	.721	18.31
09	.913	23.19	.723	18.36	.362	9.19	.094	2.39	.724	18.39	.906	23.01	.790	20.07
10	.975	24.77	.785	19.94	.393	9.98	.094	2.39	.758	19.25	.906	23.01	.790	20.07
11	1.039	26.39	.848	21.54	.424	10.77	.094	2.39	.780	19.81	.977	24.82	.825	20.96
12	1.099	27.91	.909	23.09	.455	11.56	.094	2.39	.824	20.93	1.046	26.57	.860	21.84
13	1.163	29.54	.973	24.71	.487	12.37	.094	2.39	.851	21.62	1.116	28.35	.895	22.73
15	1.288	32.72	1.058	26.87	.529	13.44	.128	3.25	.967	24.56	1.256	31.90	.982	24.94
18	1.475	37.47	1.255	31.88	.628	15.95	.128	3.25	1.062	26.97	1.465	37.21	1.087	27.61
19	1.537	39.04	1.327	33.71	.664	16.87	.128	3.25	1.070	27.18	1.535	38.99	1.122	28.50
21	1.663	42.24	1.452	36.88	.726	18.44	.128	3.25	1.148	29.16	1.674	42.52	1.194	30.33
23	1.787	45.39	1.570	39.88	.785	19.94	.128	3.25	1.340	34.04	1.814	46.08	1.394	35.41

Table II: Material and Finish		
Sym	Material	Finish
MT	Aluminum	Nickel-PTFE
ZR		Zinc-Nickel, Black (Tri-Valent CR)
M		Electroless Nickel
NF		Cad Plate / Olive Drab over Electroless Nickel
C		Anodize / Black
UC		Zinc Cobalt / Black

Table III: Panel Thickness						
Dash No.	Panel Thickness* ±.030 (.76)		H max			
			Jam Nut		Wall Mount	
	in	mm	in	mm	in	mm
T0	.000	.00	N/A	N/A	.937	23.80
T1	.062	1.57	.993	25.22	.875	22.23

*Cover fits nominally onto panel with .062" (1.57mm) thickness, but will also work for panels as thin as .031" (.79mm)

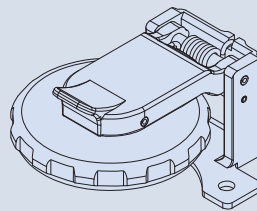
667-462 PROSEAL PROTECTIVE COVER FOR MIGHTY MOUSE SERIES 805 CONNECTORS



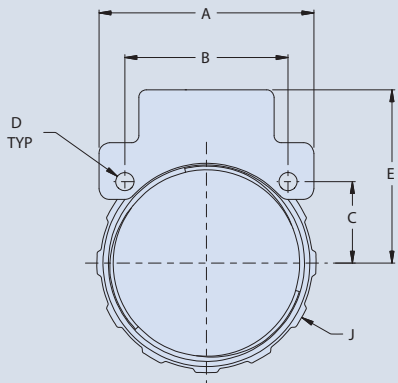
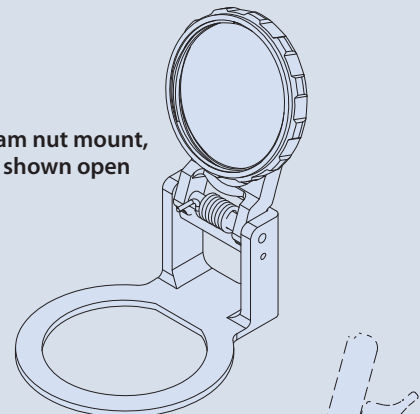
How to Order 667-462					
Sample Part Number	667-462	NF	13	T1	J
Series	ProSeal protective cover for Series 805 Mighty Mouse connectors				
Material / Finish	See Table II				
Shell Size	See Table I				
Panel Thickness	See Table III				
Type of Mounting	J = Jam Nut Mount Receptacle W = Wall Mount Receptacle				

- Threaded closure
- Full environmental protection
- Self-aligning
- Positive spring-action in closed position. Locks open at approximately 105° from receptacle face.

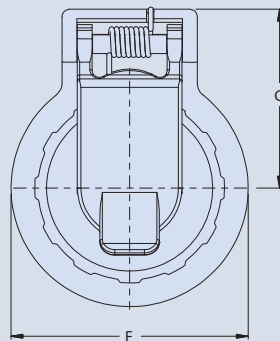
Wall mount, shown closed



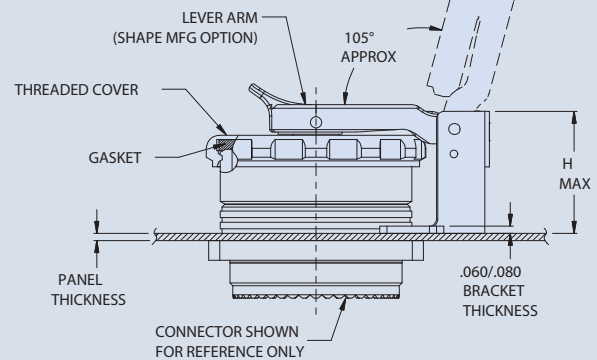
Jam nut mount, shown open



WALL MOUNT



JAM NUT



MATERIAL / FINISH

Cover, Lever Arm, Gimbal-Thermoplastic / Black
Bracket - see Table II
Spring / Pin / Rivet - 300 Series SST / Passivate
Sleeve - Delrin
Gasket - Silicone



Table I: Dimensions																
Shell Size	Wall Mount										Jam Nut Mount					
	A Dim		B Dim		C Dim		D ±.002 (.05)		E ±.031 (.79)		F ±.031 (.79)		G ±.031 (.79)		J Dia max	
	in	mm	in	mm	in	mm	in	mm	in	mm	in	mm	in	mm	in	mm
08	.850	21.59	.660	16.76	.330	8.38	.094	2.39	.675	17.15	.768	19.51	.721	18.31	.720	18.29
09	.913	23.19	.723	18.36	.362	9.19	.094	2.39	.724	18.39	.906	23.01	.790	20.07	.782	19.86
10	.975	24.77	.785	19.94	.393	9.98	.094	2.39	.758	19.25	.906	23.01	.790	20.07	.845	21.46
11	1.039	26.39	.848	21.54	.424	10.77	.094	2.39	.780	19.81	.977	24.82	.825	20.96	.908	23.06
12	1.099	27.91	.909	23.09	.455	11.56	.094	2.39	.824	20.93	1.046	26.57	.860	21.84	.970	24.64
13	1.163	29.54	.973	24.71	.487	12.37	.094	2.39	.851	21.62	1.116	28.35	.895	22.73	1.032	26.21
15	1.288	32.72	1.058	26.87	.529	13.44	.128	3.25	.967	24.56	1.256	31.90	.982	24.94	1.157	29.39
18	1.475	37.47	1.255	31.88	.628	15.95	.128	3.25	1.062	26.97	1.465	37.21	1.087	27.61	1.345	34.16
19	1.537	39.04	1.327	33.71	.664	16.87	.128	3.25	1.070	27.18	1.535	38.99	1.122	28.50	1.408	35.76
21	1.663	42.24	1.452	36.88	.726	18.44	.128	3.25	1.148	29.16	1.674	42.52	1.194	30.33	1.532	38.91
23	1.787	45.39	1.570	39.88	.785	19.94	.128	3.25	1.340	34.04	1.814	46.08	1.394	35.41	1.657	42.09

Table II: Material and Finish		
Sym	Material	Finish
MT	Aluminum	Nickel-PTFE
ZR		Zinc-Nickel, Black (Tri-Valent CR)
M		Electroless Nickel
NF		Cad Plate / Olive Drab over Electroless Nickel
C		Anodize / Black
UC		Zinc Cobalt / Black

Table III: Panel Thickness						
Dash No.	Panel Thickness* ±.030 (.76)		H max			
			Jam Nut		Wall Mount	
	in	mm	in	mm	in	mm
T0	.000	.00	N/A	N/A	.937	23.80
T1	.062	1.57	.993	25.22	.875	22.23

*Cover fits nominally onto panel with .062" (1.57mm) thickness, but will also work for panels as thin as .031" (.79mm)

SPRING ACTION

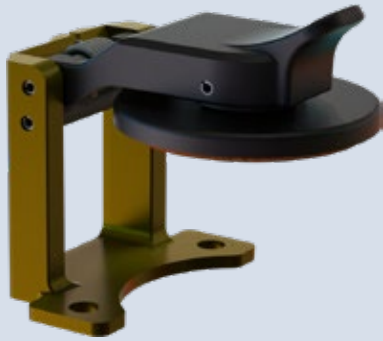
ProSeal™ environmental connector covers



for Series 806 Mil-Aero connectors

Pressure seal, dust and immersion resistant

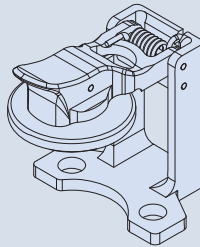
667-511 PROSEAL PROTECTIVE COVER FOR SERIES 806 MIL-AERO CONNECTORS



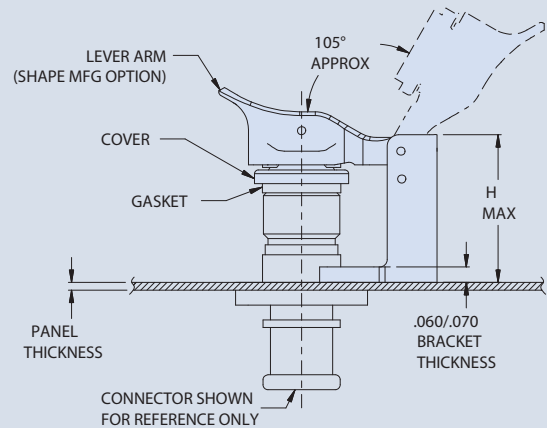
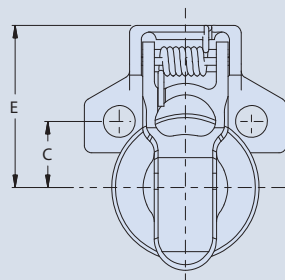
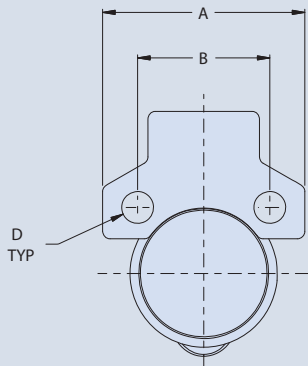
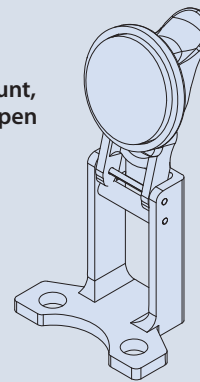
How to Order 667-511					
Sample Part Number	667-511	NF	8	T1	W
Series	ProSeal protective cover for Series 806 Mil-Aero connectors				
Material / Finish	See Table II				
Shell Size	See Table I				
Panel Thickness	See Table III				
Type of Mounting	W = Wall Mount Receptacle				

- Pressure seal, dust and immersion resistant
- Self-aligning
- Positive spring-action in closed position. Locks open at approximately 105° from receptacle face.

Wall mount, shown closed



Wall mount, shown open



MATERIAL / FINISH

Cover, Lever Arm, Gimbal-Thermoplastic / Black
 Bracket - see Table II
 Spring / Pin / Rivet - 300 Series SST / Passivate
 Sleeve - Delrin
 Gasket - Silicone



806 Mil-Aero

Table I: Dimensions										
Shell Size	Wall Mount									
	A Dim		B Dim		C Dim		D ±.002 (.05)		E ±.031 (.79)	
	in	mm	in	mm	in	mm	in	mm	in	mm
8	.842	21.39	.531	13.49	.266	6.76	.128	3.25	.651	16.54
9	.905	22.99	.594	15.09	.297	7.54	.128	3.25	.724	18.39
10	.933	23.70	.625	15.88	.313	7.95	.128	3.25	.758	19.25
11	.980	24.89	.670	17.02	.335	8.51	.128	3.25	.781	19.84
12	1.058	26.87	.765	19.43	.383	9.73	.128	3.25	.850	21.59
14	1.156	29.36	.859	21.82	.430	10.92	.128	3.25	.935	23.75
16	1.250	31.75	.938	23.83	.469	11.91	.128	3.25	1.003	25.48
18	1.341	34.06	1.016	25.81	.508	12.90	.128	3.25	1.082	27.48
20	1.467	37.26	1.109	28.17	.555	14.10	.154	3.91	1.118	28.40
22	1.593	40.46	1.203	30.56	.602	15.29	.154	3.91	1.334	33.88
24	1.719	43.66	1.312	33.32	.656	16.66	.154	3.91	1.398	35.51

Table II: Material and Finish		
Sym	Material	Finish
MT	Aluminum	Nickel-PTFE
ZR		Zinc-Nickel, Black (Tri-Valent CR)
M		Electroless Nickel
NF		Cad Plate / Olive Drab over Electroless Nickel
C		Anodize / Black
UC		Zinc Cobalt / Black

Table III: Panel Thickness					
Dash No.	Panel Thickness* ±.030 (.76)		Shell Size	H Max	
	in	mm		Wall Mount	
				in	mm
T0	.000	.00	8 – 12	.940	23.88
			14 – 24	.875	22.23
T1	.062	1.57	8 – 12	.878	22.30
			14 – 24	.813	20.64

*Cover fits nominally onto panel with .062" (1.57mm) thickness, but will also work for panels as thin as .031" (.79mm)

SPRING ACTION

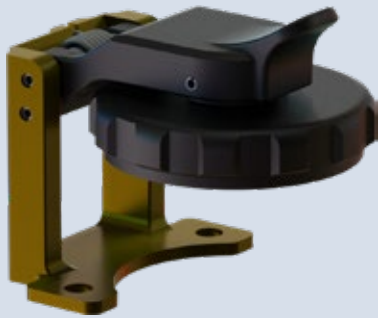
ProSeal™ environmental connector covers



for Series 806 Mil-Aero connectors

Threaded closure seal, full environmental

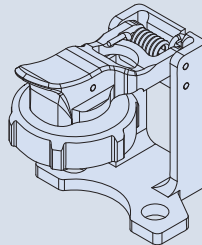
667-512 PROSEAL PROTECTIVE COVER FOR SERIES 806 MIL-AERO CONNECTORS



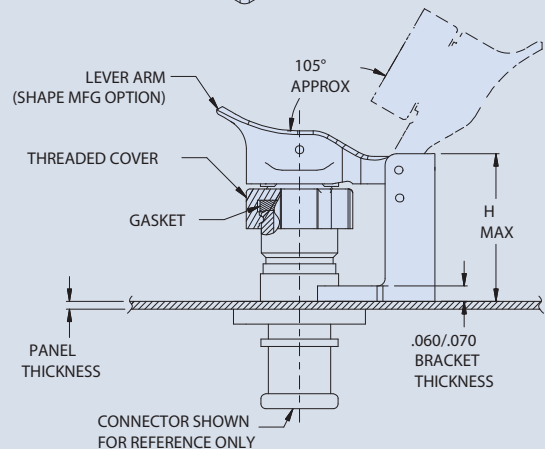
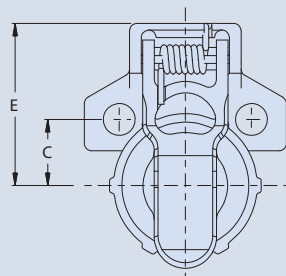
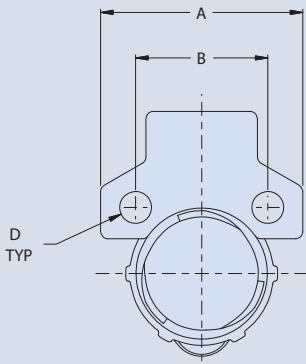
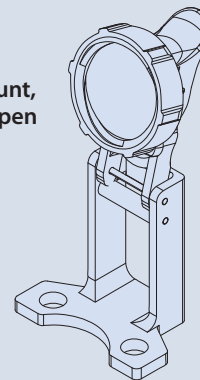
How to Order 667-512					
Sample Part Number	667-512	NF	8	T1	W
Series	ProSeal protective cover for Series 806 Mil-Aero connectors				
Material / Finish	See Table II				
Shell Size	See Table I				
Panel Thickness	See Table III				
Type of Mounting	W = Wall Mount Receptacle				

- Threaded closure
- Full environmental protection
- Self-aligning
- Positive spring-action in closed position. Locks open at approximately 105° from receptacle face.

Wall mount, shown closed



Wall mount, shown open



MATERIAL / FINISH

Cover, Lever Arm, Gimbal-Thermoplastic / Black
 Bracket - see Table II
 Spring / Pin / Rivet - 300 Series SST / Passivate
 Sleeve - Delrin
 Gasket - Silicone



806 Mil-Aero

Table I: Dimensions										
Shell Size	Wall Mount									
	A Dim		B Dim		C Dim		D ±.002 (.05)		E ±.031 (.79)	
	in	mm	in	mm	in	mm	in	mm	in	mm
8	.842	21.39	.531	13.49	.266	6.76	.128	3.25	.651	16.54
9	.905	22.99	.594	15.09	.297	7.54	.128	3.25	.724	18.39
10	.933	23.70	.625	15.88	.313	7.95	.128	3.25	.758	19.25
11	.980	24.89	.670	17.02	.335	8.51	.128	3.25	.781	19.84
12	1.058	26.87	.765	19.43	.383	9.73	.128	3.25	.850	21.59
14	1.156	29.36	.859	21.82	.430	10.92	.128	3.25	.935	23.75
16	1.250	31.75	.938	23.83	.469	11.91	.128	3.25	1.003	25.48
18	1.341	34.06	1.016	25.81	.508	12.90	.128	3.25	1.082	27.48
20	1.467	37.26	1.109	28.17	.555	14.10	.154	3.91	1.118	28.40
22	1.593	40.46	1.203	30.56	.602	15.29	.154	3.91	1.334	33.88
24	1.719	43.66	1.312	33.32	.656	16.66	.154	3.91	1.398	35.51

Table II: Material and Finish		
Sym	Material	Finish
MT	Aluminum	Nickel-PTFE
ZR		Zinc-Nickel, Black (Tri-Valent CR)
M		Electroless Nickel
NF		Cad Plate / Olive Drab over Electroless Nickel
C		Anodize / Black
UC		Zinc Cobalt / Black

Table III: Panel Thickness					
Dash No.	Panel Thickness* ±.030 (.76)		Shell Size	H Max	
	in	mm		Wall Mount	
				in	mm
T0	.000	.00	8 – 12	.940	23.88
			14 – 24	.875	22.23
T1	.062	1.57	8 – 12	.878	22.30
			14 – 24	.813	20.64

*Cover fits nominally onto panel with .062" (1.57mm) thickness, but will also work for panels as thin as .031" (.79mm)

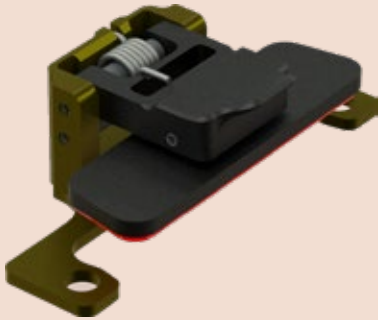
SPRING ACTION

ProSeal™ environmental connector covers

for MIL-DTL-24308 D-Subminiature connectors
Pressure seal, dust and spray resistant

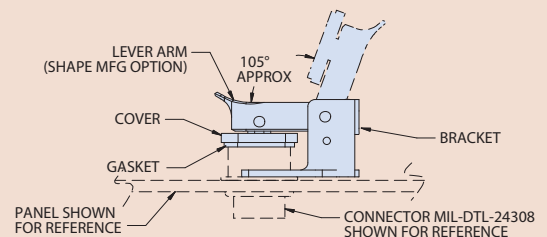
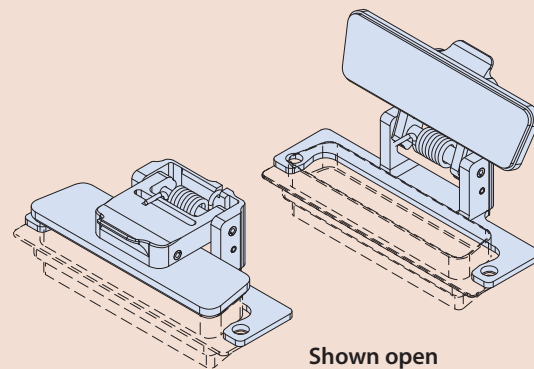
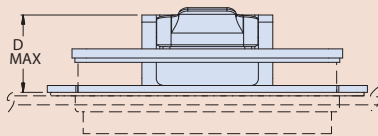
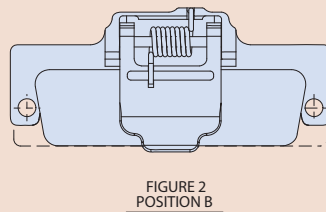
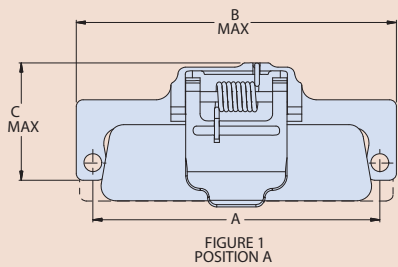


667-466 PROSEAL PROTECTIVE COVER FOR MIL-DTL-24308 D-SUB CONNECTORS



How to Order 667-466							
Sample Part Number		667-466	NF	1	TO	A	K
Series	ProSeal protective cover for MIL-DTL-24308 connectors						
Material / Finish	See Table II						
Shell Size	See Table I						
Panel Thickness	See Table III						
Connector Position	A = Figure 1 B = Figure 2						
Mounting Kit	K = supplied with Kit Omit for none						

- Pressure seal, dust and spray resistant
- Self-aligning
- Positive spring-action in closed position. Locks open at approximately 105° from receptacle face.



MATERIAL / FINISH

Cover, Lever Arm - Thermoplastic / black

Bracket - see Table II

Spings / Pins - 300 Series SST / Passivate

Sleeves - Delrin

Gasket - Silicone

Supplied with one kit of 559-001-049 with 2 jackpost mounting sets



Table I: Dimensions						
Shell Size	A		B max		C max	
	in	mm	in	mm	in	mm
1	.984	24.99	1.28	32.51	.730	18.54
2	1.312	33.32	1.61	40.89	.730	18.54
3	1.852	47.04	2.15	54.61	.861	21.87
4	2.500	63.50	2.79	70.87	.966	24.54
5	2.406	61.11	2.70	68.58	1.022	25.96
6	2.500	63.50	2.79	70.87	1.022	25.96

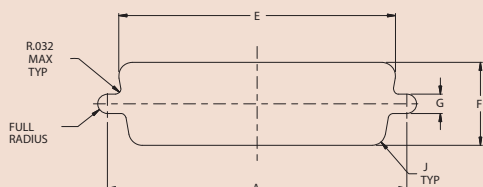
Table II: Material and Finish		
Sym	Material	Finish
MT	Aluminum	Nickel-PTFE
ZR		Zinc-Nickel, Black (Tri-Valent CR)
M		Electroless Nickel
NF		Cad Plate / Olive Drab over Electroless Nickel
C		Anodize / Black
UC		Zinc Cobalt / Black

Table III: Panel Thickness				
Dash No.	Panel Thickness		D max	
	in	mm	in	mm
T0	.000	0.00	.703	17.86
T2	.031	0.79	.658	16.71
T3	.046	1.17	.658	16.71
T4	.060	1.52	.658	16.71

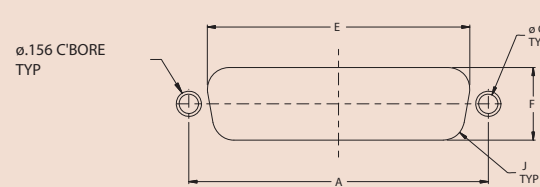
MIL-DTL-24308 D-Sub

Table IV: Front-Mount										
Shell Size	A ±.005 (.13)		E ±.005 (.13)		F ±.005 (.13)		G ±.002 (.05)		J ±.002 (.05)	
	in	mm	in	mm	in	mm	in	mm	in	mm
	1	.984	24.99	.874	22.20	.513	13.03	.120	3.05	.083
2	1.312	33.32	1.202	30.53	.513	13.03	.120	3.05	.083	2.11
3	1.852	47.04	1.743	44.27	.513	13.03	.120	3.05	.083	2.11
4	2.500	63.50	2.391	60.73	.513	13.03	.120	3.05	.083	2.11
5	2.406	61.11	2.297	58.34	.623	15.82	.120	3.05	.083	2.11
6	2.500	63.50	2.421	61.49	.685	17.40	.120	3.05	.083	2.11

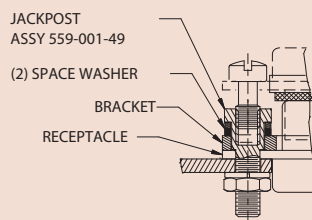
Table V: Rear-Mount										
Shell Size	A ±.005 (.13)		E ±.005 (.13)		F ±.005 (.13)		G ±.002 (.05)		J ±.002 (.05)	
	in	mm	in	mm	in	mm	in	mm	in	mm
	1	.984	24.99	.806	20.47	.449	11.40	.120	3.05	.132
2	1.312	33.32	1.134	28.80	.449	11.40	.120	3.05	.132	3.35
3	1.852	47.04	1.674	42.52	.449	11.40	.120	3.05	.132	3.35
4	2.500	63.50	2.326	59.08	.449	11.40	.120	3.05	.132	3.35
5	2.406	61.11	2.218	56.34	.555	14.10	.120	3.05	.132	3.35
6	2.500	63.50	2.352	59.74	.623	15.82	.120	3.05	.132	3.35



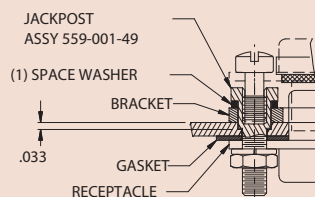
FRONT-MOUNT CUTOUT



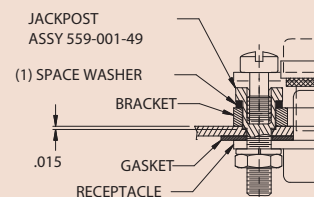
REAR-MOUNT CUTOUT



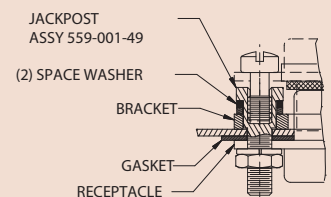
FRONT-MOUNT LAYOUT



REAR-MOUNT TO .06 PANEL WITH C'BORE TO .030 THICK



REAR-MOUNT TO .045 PANEL



REAR-MOUNT TO .030 PANEL

SPRING ACTION

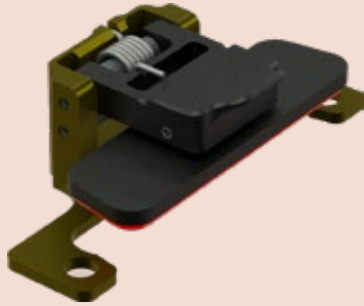
ProSeal™ environmental connector covers



for Series 28 HiPer-D® connectors

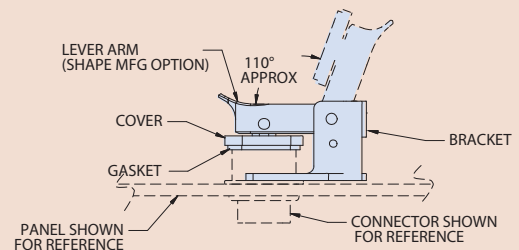
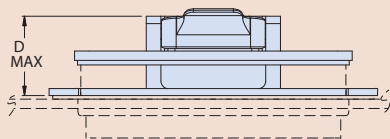
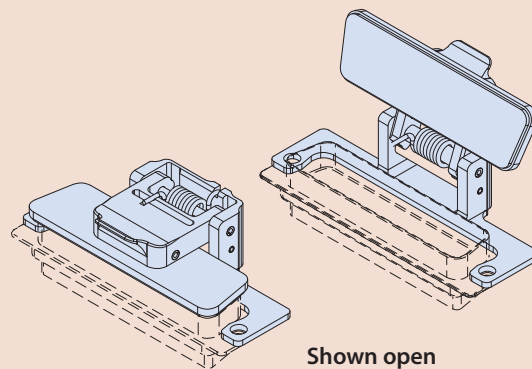
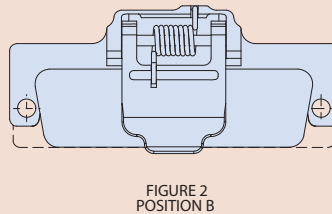
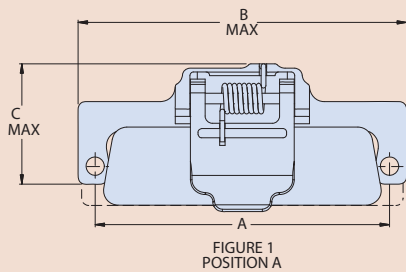
Pressure seal, dust and spray resistant

667-479 PROSEAL PROTECTIVE COVER FOR SERIES 28 HIPER-D CONNECTORS



How to Order 667-479							
Sample Part Number		667-479	NF	1	TO	A	K
Series	ProSeal protective cover for HiPer-D connectors						
Material / Finish	See Table II						
Shell Size	See Table I						
Panel Thickness	See Table III						
Connector Position	A = Figure 1 B = Figure 2						
Mounting Kit	K = supplied with Kit Omit for none						

- Pressure seal, dust and spray resistant
- Self-aligning
- Positive spring-action in closed position. Locks open at approximately 110° from receptacle face.



MATERIAL / FINISH

Cover, Lever Arm - Thermoplastic / black

Bracket - see Table II

Spings / Pins - 300 Series SST / Passivate

Sleeves - Delrin

Gasket - Silicone

Supplied with one kit of 559-001-049 with 2 jackpost mounting sets



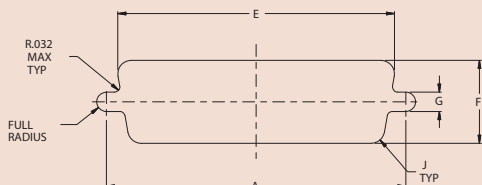
Shell Size	A		B max		C max	
	in	mm	in	mm	in	mm
1	.984	24.99	1.28	32.51	.730	18.54
2	1.312	33.32	1.61	40.89	.730	18.54
3	1.852	47.04	2.15	54.61	.861	21.87
4	2.500	63.50	2.79	70.87	.966	24.54
5	2.406	61.11	2.70	68.58	1.022	25.96
6	2.500	63.50	2.79	70.87	1.022	25.96

Sym	Material	Finish
MT	Aluminum	Nickel-PTFE
ZR		Zinc-Nickel, Black (Tri-Valent CR)
M		Electroless Nickel
NF		Cad Plate / Olive Drab over Electroless Nickel
C		Anodize / Black
UC		Zinc Cobalt / Black

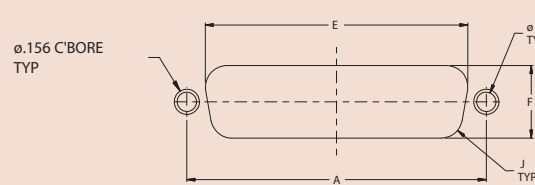
Dash No.	Panel Thickness		D max	
	in	mm	in	mm
T0	.000	0.00	.703	17.86
T2	.031	0.79	.658	16.71
T3	.046	1.17	.658	16.71
T4	.060	1.52	.658	16.71

Shell Size	A ±.005 (.13)		E ±.005 (.13)		F ±.005 (.13)		G ±.002 (.05)		J ±.002 (.05)	
	in	mm	in	mm	in	mm	in	mm	in	mm
	1	.984	24.99	.874	22.20	.513	13.03	.120	3.05	.083
2	1.312	33.32	1.202	30.53	.513	13.03	.120	3.05	.083	2.11
3	1.852	47.04	1.743	44.27	.513	13.03	.120	3.05	.083	2.11
4	2.500	63.50	2.391	60.73	.513	13.03	.120	3.05	.083	2.11
5	2.406	61.11	2.297	58.34	.623	15.82	.120	3.05	.083	2.11
6	2.500	63.50	2.421	61.49	.685	17.40	.120	3.05	.083	2.11

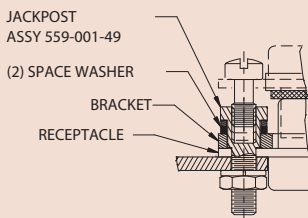
Shell Size	A ±.005 (.13)		E ±.005 (.13)		F ±.005 (.13)		G ±.002 (.05)		J ±.002 (.05)	
	in	mm	in	mm	in	mm	in	mm	in	mm
	1	.984	24.99	.806	20.47	.449	11.40	.120	3.05	.132
2	1.312	33.32	1.134	28.80	.449	11.40	.120	3.05	.132	3.35
3	1.852	47.04	1.674	42.52	.449	11.40	.120	3.05	.132	3.35
4	2.500	63.50	2.326	59.08	.449	11.40	.120	3.05	.132	3.35
5	2.406	61.11	2.218	56.34	.555	14.10	.120	3.05	.132	3.35
6	2.500	63.50	2.352	59.74	.623	15.82	.120	3.05	.132	3.35



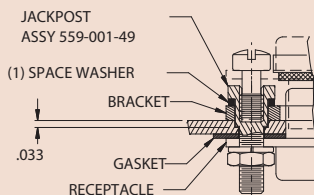
FRONT-MOUNT CUTOUT



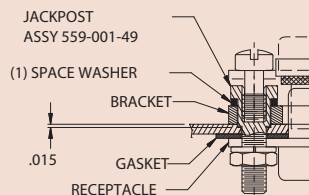
REAR-MOUNT CUTOUT



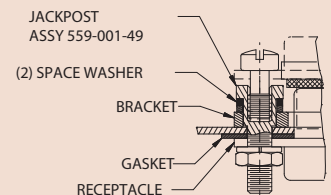
FRONT-MOUNT LAYOUT



REAR-MOUNT TO .06 PANEL WITH C'BORE TO .030 THICK



REAR-MOUNT TO .045 PANEL



REAR-MOUNT TO .030 PANEL

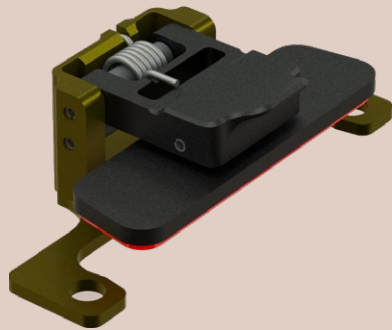
SPRING ACTION

ProSeal™ environmental connector covers

for rear-mount Series 79 connectors
(790-026 and 790-027)

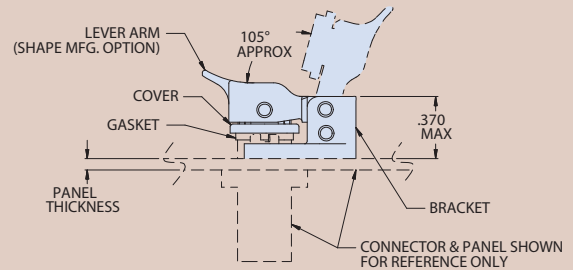
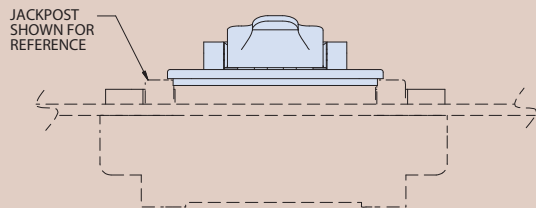
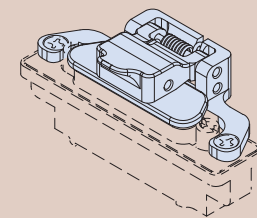
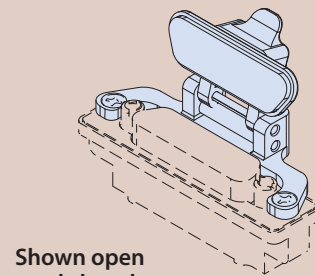
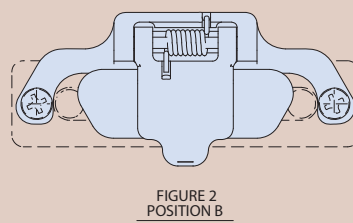
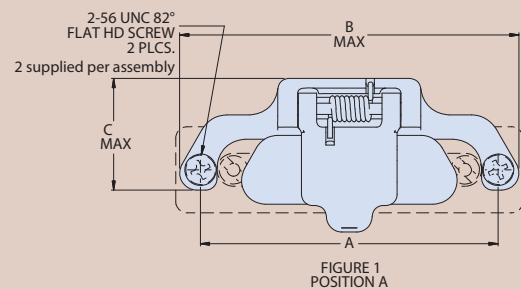


667-486 PROSEAL PROTECTIVE COVER FOR SERIES 79 CONNECTORS



- Pressure seal, dust and spray resistant
- Self-aligning
- Positive spring-action in closed position. Locks open at approximately 105° from receptacle face.

How to Order 667-486							
Sample Part Number		667-486	NF	F	T3	A	K
Series	ProSeal protective cover for Series 79 connectors						
Finish	See Table II						
Shell Size	See Table I						
Panel Thickness	See Table III						
Connector Position	A = Figure 1 B = Figure 2						
Mounting Kit	K = supplied with mounting kit (Two 2-56 UNC 82° flat head mounting screws supplied per assembly) Omit for no mounting kit						



MATERIAL / FINISH

Bracket - Aluminum Alloy / see Table II
 Cover, Lever Arm - Thermoplastic, black
 Spings / Pins - 300 Series SST / Passivate
 Sleeves - Delrin Gasket - Silicone

SPRING ACTION ProSeal™ environmental connector covers

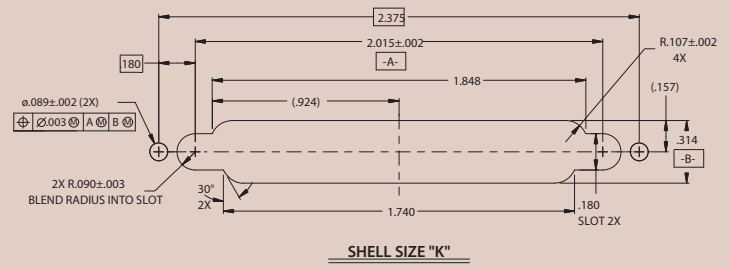
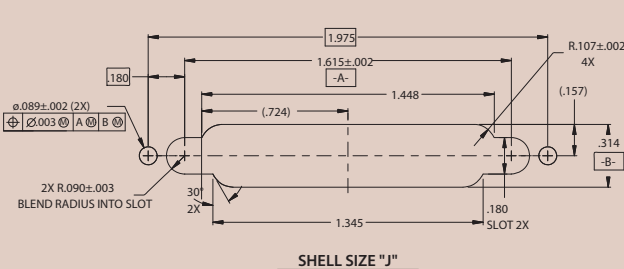
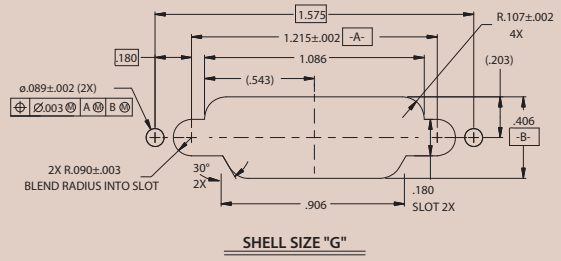
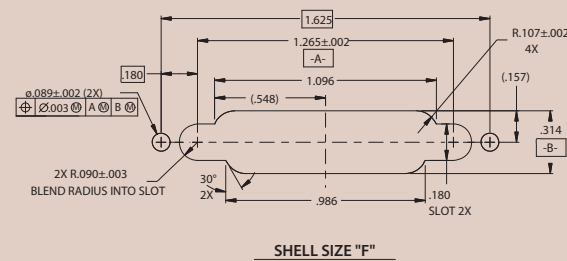
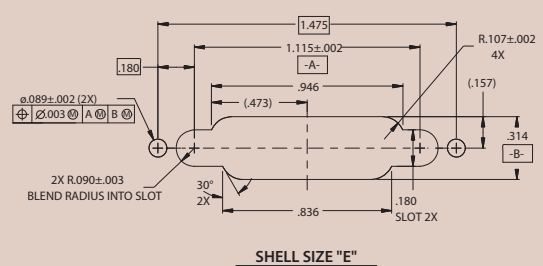
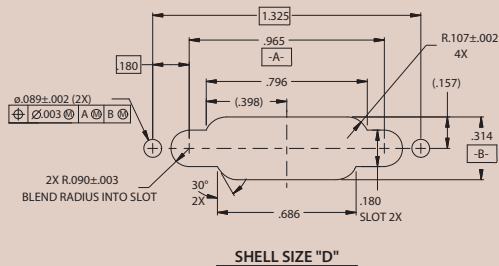
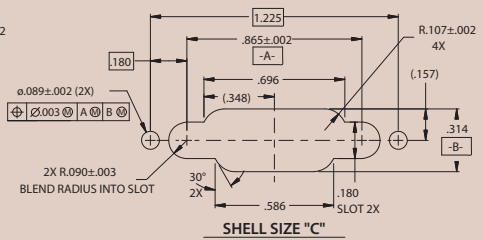
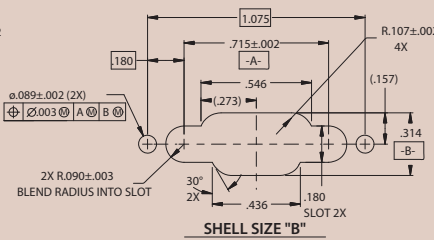
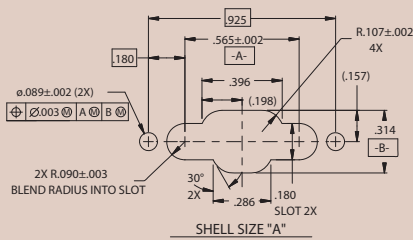
for rear-mount Series 79 connectors
(790-026 and 790-027)



Shell Size	A		B max		C max	
	in	mm	in	mm	in	mm
A	.925	23.50	1.183	30.05	.541	13.74
B	1.075	27.31	1.333	33.86	.640	16.26
C	1.225	31.12	1.483	37.67	.640	16.26
D	1.325	33.66	1.583	40.21	.662	16.81
E	1.475	37.47	1.733	44.02	.662	16.81
F	1.625	41.28	1.883	47.83	.640	16.26
G	1.575	40.01	1.863	47.32	.662	16.81
J	1.975	50.17	2.233	56.72	.640	16.26
K	2.375	60.33	2.633	66.88	.683	17.35

Sym	Material	Finish
MT	Aluminum	Nickel-PTFE
ZR		Zinc-Nickel, Black (Tri-Valent CR)
M		Electroless Nickel
NF		Cad Plate / Olive Drab over Electroless Nickel
C		Anodize / Black
UC		Zinc Cobalt / Black

Recommended Panel Cut-Outs



Series 79



667-513 PROSEAL PROTECTIVE COVER FOR SERIES 79 CONNECTORS



- Pressure seal, dust and spray resistant
- Self-aligning
- Positive spring-action in closed position. Locks open at approximately 105° from receptacle face.

How to Order 667-513					
Sample Part Number	667-513	NF	F	T3	A
Series	ProSeal protective cover for Series 79 connectors				
Finish	See Table II				
Shell Size	See Table I				
Panel Thickness	T3 fits nominally onto panel with .062" (1.57mm) thickness, will work for panels as thin as .031" (.79mm)				
Connector Position	A = Figure 1 B = Figure 2				

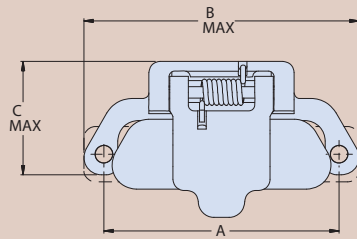


FIGURE 1 POSITION A

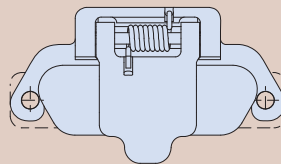
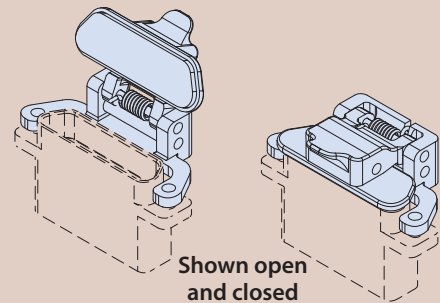
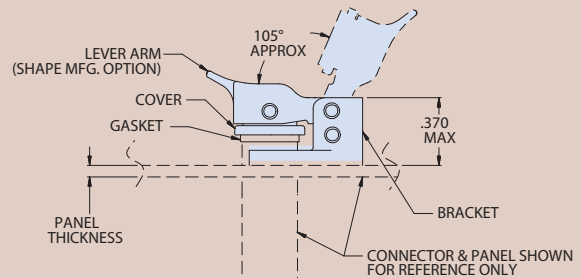
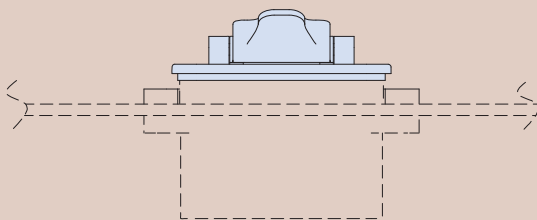


FIGURE 2 POSITION B



Shown open and closed



Shell Size	A		B max		C max	
	in	mm	in	mm	in	mm
A	.565	14.35	.810	50.57	.541	13.74
B	.715	18.16	.960	24.38	.640	16.26
C	.865	21.97	1.110	28.19	.640	16.26
D	.965	24.51	1.210	30.73	.662	16.81
E	1.115	28.32	1.360	34.54	.662	16.81
F	1.265	32.13	1.510	38.35	.640	16.26
G	1.215	30.86	1.460	37.08	.662	16.81
J	1.615	41.02	1.865	47.37	.640	16.26
K	2.015	51.18	1.260	32.00	.683	17.35

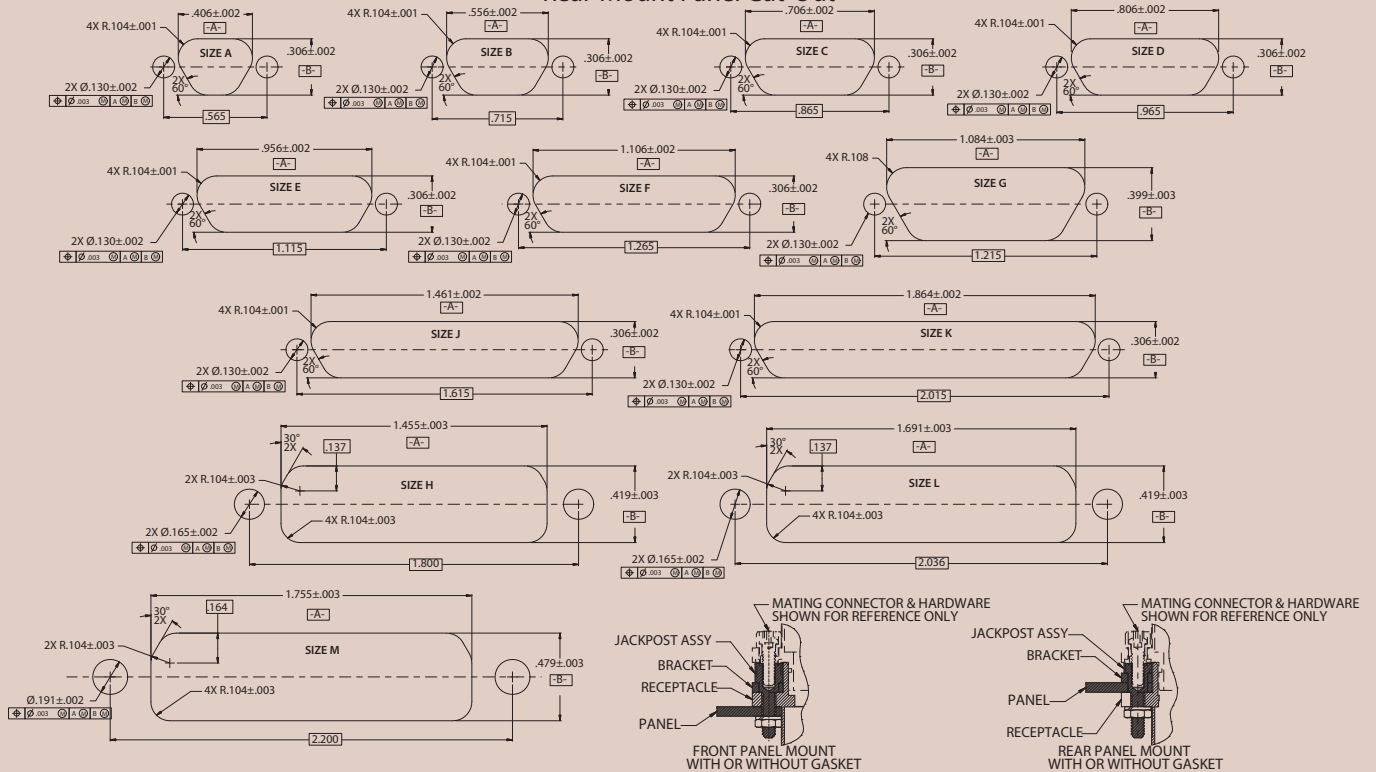
Sym	Material	Finish
MT	Aluminum	Nickel-PTFE
ZR		Zinc-Nickel, Black (Tri-Valent CR)
M		Electroless Nickel
NF		Cad Plate / Olive Drab over Electroless Nickel
C		Anodize / Black
UC		Zinc Cobalt / Black

MATERIAL / FINISH

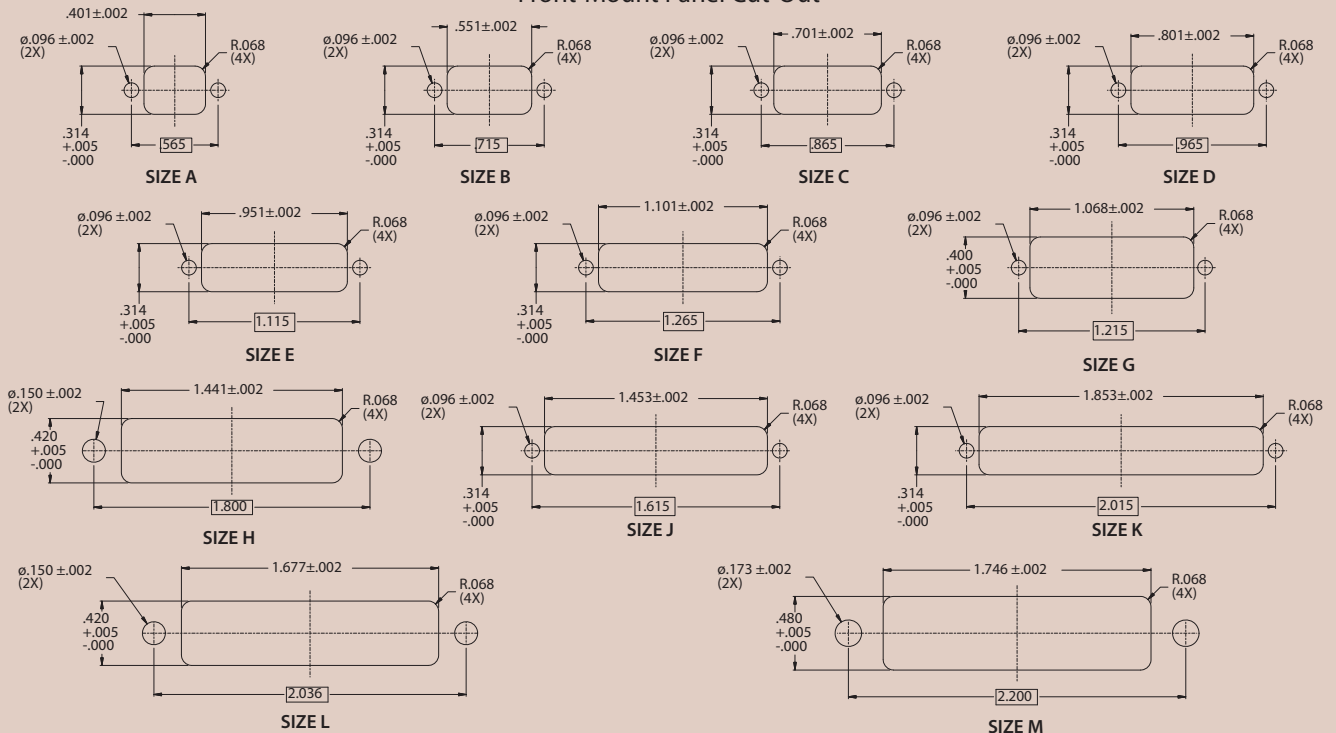
Bracket - Aluminum Alloy / see Table II
 Cover, Lever Arm - Thermoplastic, black
 Spings / Pins - 300 Series SST / Passivate
 Sleeves - Delrin Gasket - Silicone



Rear-Mount Panel Cut-Out



Front-Mount Panel Cut-Out



Series 79

SPRING ACTION
ProSeal™ environmental connector covers
 for USB connectors
 Pressure seal, full environmental

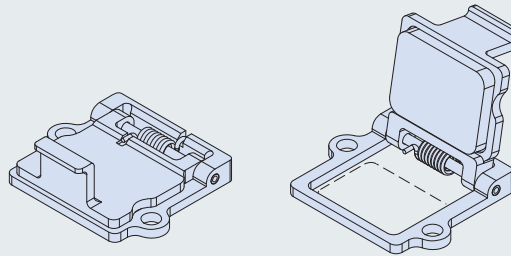


667-431 PROSEAL PROTECTIVE COVER FOR USB CONNECTORS



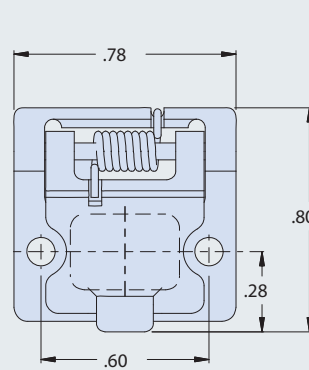
How to Order 667-431			
Sample Part Number	667-431	MT	15
Series	ProSeal protective cover for USB connectors		
Material / Finish	See Table I		
Shell Size	7, 15		

- Pressure seal, full environmental protection
- Positive spring-action in closed position

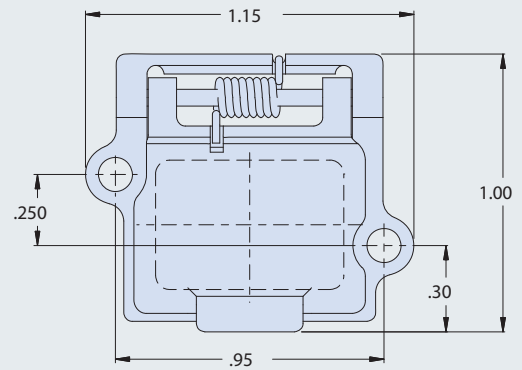


Shown closed and open

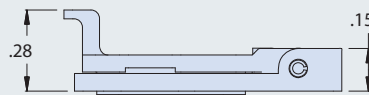
Table I: Material and Finish		
Sym	Material	Finish
MT	Aluminum	Nickel-PTFE
ZR		Zinc-Nickel, Black (Tri-Valent CR)
M		Electroless Nickel
NF		Cad Plate / Olive Drab over Electroless Nickel
C		Anodize / Black
UC		Zinc Cobalt / Black



SHELL SIZE 7



SHELL SIZE 15



MATERIAL / FINISH

Cover / Bracket - See Table I
 Spring / Roll Pin - Stainless Steel / Passivate
 Gasket - Silicone

SPRING ACTION

ProSeal™ environmental connector covers

for M81790/1 aircraft external power connectors
Pressure seal, dust and spray resistant

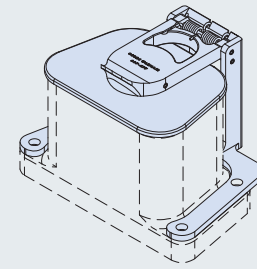
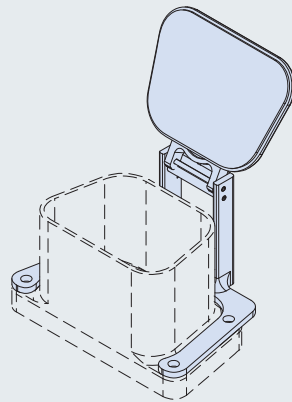


667-477 PROSEAL PROTECTIVE COVER FOR M81790/1 AIRCRAFT EXTERNAL POWER CONNECTORS

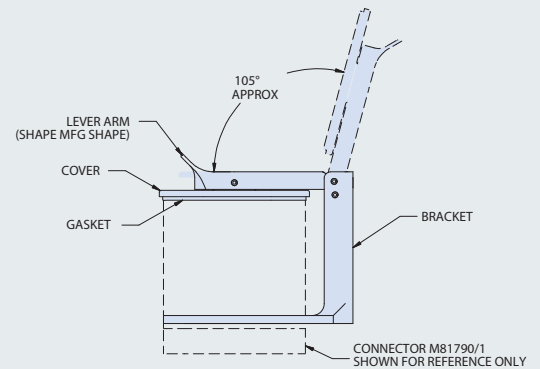
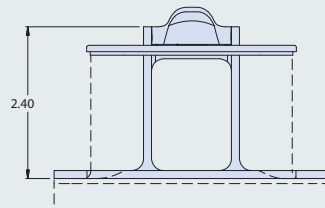
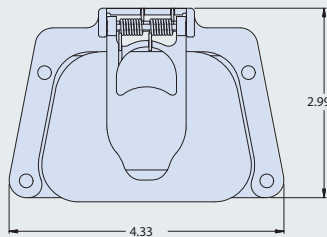


- Pressure seal, dust and spray resistant
- Self-aligning
- Spring-action cover stays open at approximately 105° from receptacle face.

How to Order 667-477				
Sample Part Number	667-477	C	-TOW	-59
Series	ProSeal protective cover for M81790/1 connectors			
Material / Finish	See Table I			
Panel Thickness (Mounting Style)	-TOW			
Gasket Material	-59 = EMI Silicone Gasket (CONSIL II) Omit for Silicone Gasket			



Shown open and closed



Sym	Material	Finish
MT	Aluminum	Nickel-PTFE
ZR		Zinc-Nickel, Black (Tri-Valent CR)
M		Electroless Nickel
NF		Cad Plate / Olive Drab over Electroless Nickel
C		Anodize / Black
UC		Zinc Cobalt / Black

MATERIAL / FINISH

Cover / Bracket / Lever Arm - Aluminum Alloy 6061-T6 / see Table I for finish
Springs / Pins - Stainless Steel / Passivate
Sleeves - Delrin
Gasket - Silicone

ADVANCED
PERFORMANCE
WIRE MANAGEMENT
SOLUTIONS

Special-purpose backshell and accessory designs for commercial and military aerospace applications



Innovative solutions to aircraft EWIS environmental sealing, wire management, strain relief, and EMC shield termination

- High-performance connector accessories for aviation industry environmental, mechanical and electromagnetic shielding requirements
- Tens of thousands of innovative part numbers in inventory ready for same-day shipment
- Fast turnaround on made-to-order accessories, typically only two to three weeks
- Constant, relentless backshell innovation

COMPOSITE EMI/RFI ENVIRONMENTAL JUNCTION BOXES



Modular junction box with feed-thru fittings and caps



Custom connectorized low-profile composite data hub



Heavy-duty composite cable/equipment bay

NEW INNOVATIONS IN Connector Backshells and Accessories



Unique, problem-solving backshells and connector accessories for aerospace applications

HIGH-TEMP, LIGHTWEIGHT COMPOSITE THERMOPLASTIC ACCESSORIES



Split-shell and snap-lock banding backshells

Connector coupling ring safety sleeve for F/O applications

Piggyback boot Band-in-a-Can

Drop-in EMI/RFI shield termination configurations

PRESSURE BOUNDARY, FIREWALL, AND SPLIT-SHELL FEED-THRU



Pressure boundary composite feed-thru

Firewall pressure boundary feed-thru

EMI/RFI split-shell metal feed-thru

- High-grade engineering thermoplastic or machined metal
- Six pressure-boundary feed-thru layouts with accommodation for 1 – 6 cables
- Split-shell jam nut versions with EMI/RFI shield termination porch
- O-ring sealed panel and box mounting interface

INNOVATIVE EWIS WIRE MANAGEMENT TECHNOLOGIES



Dummy stowage shorting plugs and receptacles

Self-locking protective covers

Advanced "Dogbone" terminal blocks and hoods

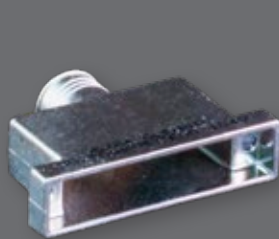
Series 437-001 Backshell "Connector Saver"

Environmental panel cut-out sealing plug assembly

Heat shrink boot / wire routing clamp assembly



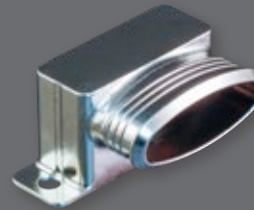
MICRO-D AND NANOMINIATURE BACKSHELLS AND CONNECTOR ACCESSORIES



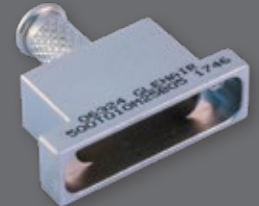
Composite Micro-D banding backshell



Plastic and metal covers for unmated environmental protection



Micro-D backshell with elliptical banding platform



Metal Micro-D banding backshell

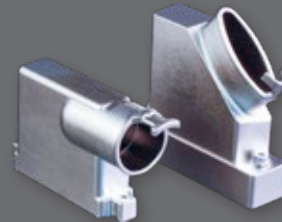
M24308 D-SUB SOLUTIONS: HIGH PERFORMANCE, RUGGEDIZED D-SUBMINIATURE PRODUCTS



Split-shell D-subminiature composite backshell



Split-shell M24308 dual-banding backshell



Composite D-subminiature backshells



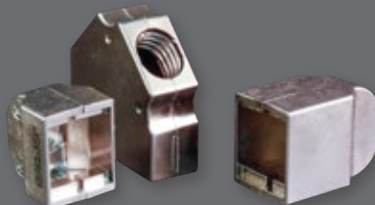
Flex-D Composite M24308 Backshell

LARGER FORM FACTOR RECTANGULAR BACKSHELLS

EPX® and EPXB® are registered trademarks of Radiall



Composite EMI/RFI banding backshell for EPXB® connectors



Composite EN4165 fiber optic/electrical backshells



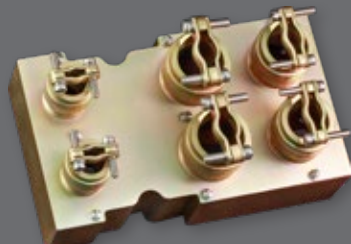
Backshells for EPX® series connectors



ARINC series backshells



Composite airframe banding backshell



ARINC series backshell with individual wire bundle strain relief



MIL-C-81659



Special Quadrax connector backshell

Glenair Mil-Spec Interconnect Technologies



Qualified Products: Glenair is a Mil-Aero connector supplier. Our product quality begins in engineering (the largest team in the high-performance interconnect business) and is realized in our “made in the USA” vertically-integrated manufacturing cells. One of the key ways we ensure both areas are functioning smoothly is to submit designs and manufactured specimens into the military QPL process administered by the Defense Logistic Agency of the US government. These certification exercises are multi-year activities that test every aspect of a connector’s performance.



MIL-DTL-38999 Series III environmental connectors



MIL-DTL-38999 Series IV environmental connectors



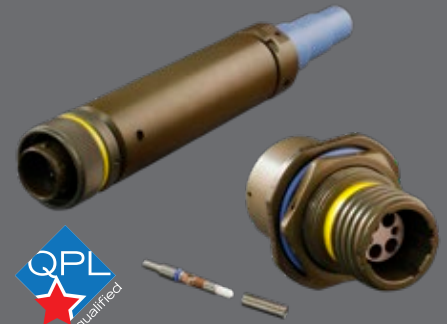
MIL-DTL-28840 shipboard connectors and accessories



MIL-DTL-38999 Series I, II, III, and IV hermetic connectors



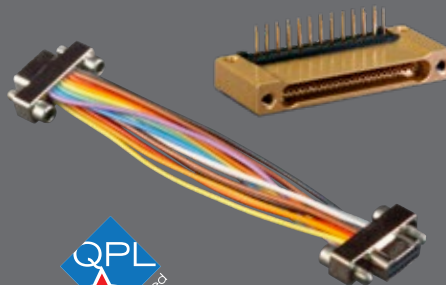
MIL-DTL-24308 hermetic connectors



MIL-DTL-28876 shipboard fiber optic



MIL-DTL-83513 Micro-D connectors and accessories



MIL-DTL-32139 Nanominiature connectors and accessories



MIL-DTL-29504 (fiber optic) and AS39029 (electrical) contacts



MIL-DTL-55116 Radio / Audio Connectors



VG95234 Reverse-Bayonet and VG96929 Single-Pole



VG95328 Bayonet-Lock IAW MIL-C-26482



M85049 (AS85049) backshells and connector accessories



MIL-DTL-83723 backshells and connector accessories



M81511 (AS81511) protective covers and connector accessories



M85049/140 series qualified / TACOM-approved environmental shrink boots



MIL-PRF-24758 Navsea-qualified conduit and fittings



M85049 composite backshells and covers for MIL-DTL-38999

GLENAIR'S COMMITMENT TO QUALITY

Glenair is proud of the quality and reliability we build into our broad range of mission-critical interconnect solutions—from discrete connectors to complex cable assemblies and embedded systems. Glenair is the biggest “made in the USA” interconnect supplier in the high-reliability industry, but we also operate factories in the UK, Italy, and Germany to serve the unique requirements of those markets. Glenair’s Worldwide Quality System is ISO 9001 and AS9100 certified and registered. We also hold many discrete product and operations certifications for specialty, high-performance markets including space, nuclear power, and rail. In addition to world-class quality, we are laser-focused on customer service and committed to being the easiest manufacturer in our industry to do business with. Here are just some of our key customer service principles:



- Lightning-fast turnarounds on quotes and special orders
- Worldwide sales and technical support in every major market
- Full-spectrum, “no gap” product lines
- No dollar or quantity minimums
- ISO 9001 and AS9100 certified
- Huge same-day shipment inventory
- Generous NRE, RMA, and sample request policies
- Abundant engineering and technical support
- No attitudinal constraints when it comes to customer convenience and service



MISSION-CRITICAL INTERCONNECT SOLUTIONS

Glenair, Inc.

1211 Air Way • Glendale, California • 91201-2497

Telephone: 818-247-6000 • Fax: 818-500-9912 • sales@glenair.com

www.glenair.com

Glenair Power Products Group

20 Sterling Drive
Wallingford, CT
06492

Telephone:
203-741-1115
Facsimile:
203-741-0053
sales@glenair.com

Glenair UK Ltd

40 Lower Oakham Way
Oakham Business Park
Mansfield, Notts
NG18 5BY England

Telephone:
+44-1623-638100
Facsimile:
+44-1623-638111
sales@glenair.co.uk

Glenair Microway Systems

7000 North Lawndale Avenue
Lincolnwood, IL
60712

Telephone:
847-679-8833
Facsimile:
847-679-8849

Glenair Nordic AB

Gustav III : S Boulevard 42
SE-169 27 Solna
Sweden

Telephone:
+46-8-50550000
sales@glenair.se

Glenair GmbH

Schaberweg 28
61348 Bad Homburg
Germany

Telephone:
06172 / 68 16 0
Facsimile:
06172 / 68 16 90
info@glenair.de

Glenair Iberica

C/ La Vega, 16
45612 Velada
Spain

Telephone:
+34-925-89-29-88
Facsimile:
+34-925-89-29-87
sales@glenair.es

Glenair Italia S.p.A.

Via Del Lavoro, 7
40057 Quarto Inferiore –
Granarolo dell'Emilia
Bologna, Italy

Telephone:
+39-051-782811
Facsimile:
+39-051-782259
info@glenair.it

Glenair France SARL

7, Avenue Parmentier
Immeuble Central Parc #2
31200 Toulouse
France

Telephone:
+33-5-34-40-97-40
Facsimile:
+33-5-61-47-86-10
sales@glenair.fr

Glenair Korea

B-1304 Gunpo IT Valley
148 Gosan-Ro, Gunpo-Si
Kyunggi-Do, Korea
435-733

Telephone:
+82-31-8068-1090
Facsimile:
+82-31-8068-1092
sales@glenair.kr