

MISSION-CRITICAL
INTERCONNECT
SOLUTIONS



SPRING-ACTION

ProSeal™ Protective Covers

Foolproof · environmental · for circular and rectangular military / aerospace connectors

SEPTEMBER 2019

SPRING-ACTION
PROTECTIVE
COVERS



IP67 and IP68 environmental protective connector covers for frequent mate/demate applications in military defense / aerospace.



High-performance military and commercial interconnect applications employ protective covers to seal unmated receptacles from sand, dust, and fluid ingress, as well as other forms of environmental and mechanical damage. ProSeal spring-action environmental protective covers are attached directly to panels and electronic equipment housings to enhance the reliability and foolproof performance of mounted I/O connectors—particularly in applications that see a high number of mate/demate cycles. Spring-action ProSeal protective covers are available for every military QPL and Glenair signature connector series, and are supplied in two styles for dust, spray, and fluid immersion protection (IP67) as well as for full environmental (water jet) applications (IP68).

- Anti-vibration and shock spring-action performance
- Dust- and spray-tight (IP67) and full environmental (IP68) designs with self-aligning environmental seals
- Jam nut and wall mount receptacle configurations
- Positive spring-action in closed position, locks open for convenient mate/demate
- Compatible with a broad range of mil-standard/ aerospace connectors including D38999 Series I, II, III; Mighty Mouse Series 801, 804, 805, and 806; M24308 and more



SPRING ACTION
ProSeal™ environmental connector covers
For mission-critical mil-aero applications
Innovative features and benefits



ROBUST ENVIRONMENTAL SEALING



Self-aligning gimbal-action face seal



Anti-vibration and shock spring-action performance



Full environmental threaded / twist-lock seal

RUGGED MECHANICAL PERFORMANCE



Dual-action mechanism: cover locks in open position and holds tight in closed position



ProSeal cover shares connector mounting holes and hardware

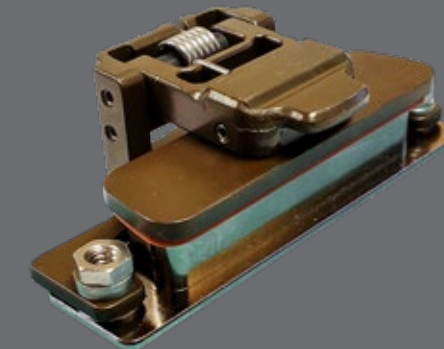


Jam nut and wall mount configurations available in all styles

VERSATILITY OF DESIGN



Suitable for all circular designs including commercial USB / RJ45 interfaces



Rectangular connector designs with convenient thumb tabs




Low-profile non-locking designs for use with recessed quick-disconnect connectors



| GENERAL INFORMATION, PRODUCT SPECIFICATIONS, AND PERFORMANCE DATA | |
|---|--------|
| Mil-Spec to ProSeal Cross-Reference | Page 4 |
| ProSeal IP Ratings | Page 5 |
| Compliance Matrix Outlines for Full Environmental | Page 6 |
| Compliance Matrix Outlines for Dust and Immersion Resistant | Page 7 |



| MIL-DTL-5015, MIL-DTL-83723 SERIES II COVERS | |
|---|---------|
|  667-450 Threaded closure seal, full environmental, MIL-DTL-5015, MS3100 and MS3400 Front or rear connector panel mount, wall mount or jam nut style | Page 8 |
|  667-451 Pressure seal, dust and immersion resistant, MIL-DTL-5015, MS3100 and MS3400 Front or rear connector panel mount, wall mount or jam nut style | Page 10 |

| MIL-DTL-5015, VG95234 REVERSE-BAYONET COVERS | |
|---|---------|
|  667-488 Pressure seal, dust and immersion resistant, MIL-DTL-5015, ITS31030 and GT030 Rear connector panel mount, wall mount style | Page 12 |

| MIL-DTL-26482 COVERS | |
|--|---------|
|  667-472 Pressure seal, dust and immersion resistant, MIL-DTL-26482, Series 1 and 2 Front or rear connector panel mount, wall mount or jam nut style | Page 14 |


| MIL-DTL-38999 COVERS, SERIES I, II, III | |
|---|---------|
|  667-467 Pressure seal, dust and immersion resistant, D38999 Series I, front or rear connector panel mount, wall mount or jam nut style | Page 16 |
|  667-447 Pressure seal, dust and immersion resistant, D38999 Series II, MS27472, front or rear connector panel mount, wall mount or jam nut style | Page 18 |
|  667-448 Threaded closure seal, full environmental, D38999 Series III, front or rear connector panel mount, wall mount or jam nut style | Page 20 |
|  667-449 Pressure seal, dust and immersion resistant, D38999 Series III, front or rear connector panel mount, wall mount or jam nut style | Page 22 |

| SERIES 80 MIGHTY MOUSE / SERIES 806 MIL-AERO COVERS | |
|---|---------|
|  667-497 Pressure seal, dust and immersion resistant, Jam Nut, 801 Series, front or rear connector mount, wall mount style | Page 24 |
|  667-509 Threaded closure seal, full environmental, 801 Series, front or rear connector mount, wall mount style | Page 26 |
|  667-387 Pressure seal, dust and immersion resistant, Jam Nut, 804 Series, rear-mount jam nut style | Page 28 |
|  667-392 Pressure seal, dust and immersion resistant, 804 Series rear wall mount connector | Page 30 |
|  667-424 Pressure seal, dust and immersion resistant, Wall Mount, 805 Series, front or rear connector mount, wall mount or jam nut style | Page 32 |
|  667-462 Threaded closure seal, full environmental, 805 Series, front or rear connector mount, wall mount or jam nut style | Page 34 |
|  667-511 Pressure seal, dust and immersion resistant, Series 806 Mil-Aero, front or rear connector mount, wall mount or jam nut style | Page 36 |
|  667-512 Threaded closure seal, full environmental, Series 806 Mil-Aero, front or rear connector mount, wall mount or jam nut style | Page 38 |

| D-SUBMINIATURE M24308 / SERIES 28 HIPER-D COVERS | |
|---|---------|
|  667-466 Pressure seal, dust and spray resistant, MIL-DTL-24308, front or rear connector mount | Page 40 |
|  667-479 Pressure seal, dust and spray resistant, Series 28 HiPer-D, front or rear connector mount | Page 42 |

| SERIES 79 COVERS | |
|---|---------|
|  667-486 Pressure seal, dust and spray resistant, rear-mount Series 79 connector with environmental seal to panel | Page 44 |
|  667-513 Pressure seal, dust and spray resistant Series 79, front or rear connector mount | Page 46 |

| SPECIALTY USB CONNECTOR COVER | |
|--|---------|
|  667-431 Pressure seal, full environmental protection, positive spring load, rear connector mount | Page 48 |

| AIRCRAFT EXTERNAL POWER CONNECTOR COVER | |
|--|---------|
|  667-477 Pressure seal, dust and spray resistant, M81790/1 Aircraft External Power Connectors | Page 49 |

SPRING ACTION
ProSeal™ environmental connector covers
 Mil-standard to ProSeal part number cross-reference



SPRING ACTION
ProSeal™ environmental connector covers
 IP ratings



| MILITARY CONNECTOR STANDARD TO PRO-SEAL PART NUMBER X-REF | | | |
|---|----------------------|--|---------------------|
| MILITARY CONNECTOR OR CONNECTOR SERIES | CONNECTOR PART NO. | DESCRIPTION | PROSEAL PART NUMBER |
| MIL-DTL 5015 MIL-DTL-83723 SERIES II | MS3100 | Wall Mount Receptacle | 667-450 667-451 |
| | MS3102 | Box Mount Receptacle | |
| | MS3103 | Wall Mount Receptacle | |
| | MS3400 | Wall Mount Receptacle | |
| | MS3402 | Box Mount Receptacle | |
| | MS3404 | Jam Nut Receptacle | |
| | MS3412 | Box Mount Receptacle, Threaded Skirt | |
| | MS3450 | Wall Mount Receptacle | |
| | MS3451 | In-Line Receptacle | |
| | MS3452 | Box Mount Receptacle | |
| | MS3454 | Jam Nut Receptacle | |
| | /19 | Wall Mount Receptacle | |
| | /20 | Wall Mount Receptacle | |
| | /21 | Box Mount Receptacle | |
| /22 | Box Mount Receptacle | | |
| MIL-DTL-5015 VG 95234 | N/A | Reverse Bayonet | 667-488 |
| MIL-DTL-26482 | MS3110 | Wall Mount Receptacle | 667-472 |
| | MS3114 | Jam Nut Receptacle | |
| | MS3120 | Wall Mount Receptacle | |
| | MS3121 | In-Line Receptacle | |
| | MS3122 | Box Mount Receptacle | |
| MIL-DTL-38999 SERIES I | MS3470 | Wall Mount Receptacle | 667-467 |
| | MS27466 | Wall Mount Receptacle | |
| | MS27468 | Jam Nut Receptacle | |
| MIL-DTL-38999 SERIES II | MS27496 | Box Mount Receptacle | 667-447 |
| | MS27472 | Wall Mount Receptacle | |
| | MS27474 | Jam Nut Receptacle | |
| | MS27475 | Wall Mount Receptacle | |
| | MS27476 | Box Mount Receptacle | |
| | MS27477 | Jam Nut Receptacle | |
| | MS27478 | Solder Mount Receptacle | |
| | MS27497 | Wall Mount Receptacle, Back Panel Mount | |
| | MS27499 | Box Mount Receptacle | |
| | MS27508 | Box Mount Receptacle, Back Panel Mount | |
| MIL-DTL-38999 SERIES III | MS27513 | Box Mount Receptacle, Long Grommet | 667-448 667-449 |
| | /20 | Wall Mount Receptacle | |
| | /21 | Box Mount Receptacle | |
| | /23 | Jam Nut Receptacle | |
| 801 SERIES | 801-009-02 | Mighty Mouse Double-Start ACME Thread Receptacle, Flange Mount, with Banding Platform | 667-497 667-509 |
| | 801-009-07 | Mighty Mouse Double-Start ACME Thread Receptacle, Jam-Nut, with Banding Platform | |
| | 801-010-02 | Mighty Mouse Double-Start ACME Thread Receptacle, Flange-Mount, with Accessory Threads | |
| | 801-010-07 | Mighty Mouse Double-Start ACME Thread Receptacle, Jam-Nut, with Accessory Threads | |
| 804 SERIES | 804-003-07 | Push-Pull Rear Panel Mount Receptacle to PC-Tail or Solder Cup | 667-387 667-392 |
| | 804-005-07 | Push-Pull Rear Panel Mount Receptacle to PC-Tail or Solder Cup | |
| | 2330-0400 | Push-Pull Rear Panel Mount Receptacle RJ45 Jack to PC-Tail | |
| | 2330-0401 | Push-Pull Rear Panel Mount Receptacle USB 2.0 Jack to PC-Tail | |
| 805 SERIES | 805-00*-02 | Mighty Mouse Triple Start ACME Thread, Wall Mount Receptacle | 667-424 667-462 |
| | 805-00*-07 | Mighty Mouse Triple Start ACME Thread, Jam Nut Receptacle | |
| | 805-301 | Mighty Mouse, Super Seal with RJ45 | |
| | 805-341 | Mighty Mouse, Super Seal with USB 2.0 Type A | |
| 806 SERIES | 806-013 | Series 806 Mil-Aero Square Flange Receptacle | 667-511 |
| | 806-020 | Series 806 Mil-Aero Jam Nut Receptacle | 667-512 |

| IP Rating | ProSeal Part Number | Dust-Tight No Ingress of Dust with Underpressure | Water Resistant Shower Spray at 200 mm | Water Resistant Nozzle Ø6.3 mm At 2.5 m | Water Resistant Nozzle Ø12.5 mm At 2.5 m | Water Proof Immersion Tank At 1.0 m for 30 min. | Water Proof Immersion Tank at 10.0 m for 30 min. | Water Proof Random Vibration with Shower |
|-----------|---------------------|--|--|---|--|---|--|--|
| 667-450 | ✓ | ✓ | ✓ | ✓ | ✓ | ✓ | ✓ | ✓ |
| 667-451 | ✓ | ✓ | | | | ✓ | | |
| 667-488 | ✓ | ✓ | | | | ✓ | | |
| 667-472 | ✓ | ✓ | | | | ✓ | | |
| 667-467 | ✓ | ✓ | | | | ✓ | | |
| 667-447 | ✓ | ✓ | | | | ✓ | | |
| 667-448 | ✓ | ✓ | ✓ | ✓ | ✓ | ✓ | ✓ | ✓ |
| 667-449 | ✓ | ✓ | | | | ✓ | | |
| 667-497 | ✓ | ✓ | | | | ✓ | | |
| 667-509 | ✓ | ✓ | ✓ | ✓ | ✓ | ✓ | ✓ | ✓ |
| 667-387 | ✓ | ✓ | | | | ✓ | | |
| 667-392 | ✓ | ✓ | | | | ✓ | | |
| 667-424 | ✓ | ✓ | | | | ✓ | | |
| 667-462 | ✓ | ✓ | ✓ | ✓ | ✓ | ✓ | ✓ | ✓ |
| 667-511 | ✓ | ✓ | | | | ✓ | | |
| 667-512 | ✓ | ✓ | ✓ | ✓ | ✓ | ✓ | ✓ | ✓ |
| 667-466 | ✓ | ✓ | | | | ✓ | | |
| 667-479 | ✓ | ✓ | | | | ✓ | | |
| 667-486 | ✓ | ✓ | | | | ✓ | | |
| 667-513 | ✓ | ✓ | | | | ✓ | | |
| 667-431 | ✓ | ✓ | | | | ✓ | | |

* Connector-dependent (potted connector)



Qualification test compliance



Qualification test compliance

| Qualification Test Compliance for Full Environmental ProSeal Covers | | | |
|---|--|--|-------------------|
| Qualification Requirement | Test Purpose | Test Method | Vendor Compliance |
| Salt Spray 500 hours Finsihes: OD Cadmium (NF) No Plating Composite (XB) | Assess Corrosion Resistance | EIA-364-26 | Pass |
| Salt/S02 336 hours Finsihes: OD Cadmium (NF) No Plating Composite (XB) | Assess Corrosion Resistance | EIA-364-26 | Pass |
| Durability (1500 Cycles) Lifting the arm at a rate of 300 cycles per hour. | Assess Robustness of Spring Action | MIL-DTL-38999M Ser.III paragraph 4.5.8.1 | Pass |
| External Humidity | Assess Withstanding of Humid Atmosphere | QTP-665 para 11.3 RTCA/DO-160G, category C-External Humidity Environment (Section 6.0) | Pass |
| IP6X Dust-tight | Assess Withstanding Ingress of Dust | IEC 60529 para 13.4 and 13.5 | Pass |
| IPX7-Temporary Water Immersion | Assess Ingress of Water During Temporary Immersion in Water | IEC 60529 para 14.2.7 | Pass |
| IPX6-Water Jet 12.5mm diameter, distance 2.5 m to 3 | Assess Ingress of Water After Water Jet/Stream | IEC 60529 para 14.2.6 | Pass |
| IPX5-Water jet hose nozzle 6.3 mm diameter, distance 2,5m to 3m | Assess Ingress of Water After Water Jet/Stream | IEC 60529 para 14.2.5 | Pass |
| IPX4-Water Spray numeral 3 Spray ± 180° from vertical | Assess Ingress of Water After Water Oscillating Spray | IEC 60529 para 14.2.4, FIG 5, TABLE 8 | Pass |
| Sine Vibration | Test for the purpose of assuring no disengagement of test covers, no backing off of the coupling mechanism or opening of the arm, no evidence of cracking/ breaking, or loosening of parts during and after vibration simulating helicopter operating vibration. | MIL-STD-810G, Method 514.7, Annex E, Category 24 for Helicopters | Pass |
| Sine Vibration with Temperature (200°C) | Test for the purpose of assuring no disengagement of test covers, no backing off of the coupling mechanism or opening of the arm, no evidence of cracking/ breaking, or loosening of parts during and after vibration simulating helicopter operating vibration. | MIL-STD-38999M Series III para 4.5.23.2.1 | Pass |
| Random Vibration with Rain | Test for the purpose of assuring no disengagement of test covers, no backing off of the coupling mechanism or opening of the arm, no evidence of cracking/ breaking, or loosening of parts during and after vibration simulating helicopter operating vibration. Assess signs of water ingress. | MIL-DTL-38999M Ser.III paragraph 4.5.23.4 In accordance with EIA- 364-28 | Pass |
| Fluid Immersion | Test for detrimental damage (cracking, peeling, dissolution) after immersion in several fluids, | EIA 364-10 | Pass |

| Qualification Test Compliance for Dust and Immersion Resistant ProSeal Covers | | | |
|---|--|--|-------------------|
| Qualification Requirement | Test Purpose | Test Method | Vendor Compliance |
| Salt Spray 500 hours Finsihes: OD Cadmium (NF) No Plating Composite (XB) | Assess Corrosion Resistance | EIA-364-26 | Pass |
| Salt/S02 336 hours Finsihes: OD Cadmium (NF) No Plating Composite (XB) | Assess Corrosion Resistance | EIA-364-26 | Pass |
| Durability (1500 Cycles) Lifting the arm at a rate of 300 cycles per hour. | Assess Robustness of Spring Action | MIL-DTL-38999M Ser.III paragraph 4.5.8.1 | Pass |
| External Humidity | Assess Withstanding of Humid Atmosphere | QTP-665 para 11.3 RTCA/DO-160G, category C-External Humidity Environment (Section 6.0) | Pass |
| IP6X Dust-tight | Assess Withstanding Ingress of Dust | IEC 60529 para 13.4 and 13.5 | Pass |
| IPX7-Temporary Water Immersion | Assess Ingress of Water During Temporary Immersion in Water | IEC 60529 para 14.2.7 | Pass |
| IPX4-Water Spray numeral 3 Spray ± 180° from vertical | Assess Ingress of Water After Water Oscillating Spray | IEC 60529 para 14.2.4, FIG 5, TABLE 8 | Pass |
| Sine Vibration | Test for the purpose of assuring no disengagement of test covers, no backing off of the coupling mechanism or opening of the arm, no evidence of cracking/ breaking, or loosening of parts during and after vibration simulating helicopter operating vibration. | MIL-STD-810G, Method 514.7, Annex E, Category 24 for Helicopters | Pass |
| Sine Vibration with Temperature (200°C) | Test for the purpose of assuring no disengagement of test covers, no backing off of the coupling mechanism or opening of the arm, no evidence of cracking/ breaking, or loosening of parts during and after vibration simulating helicopter operating vibration. | MIL-STD-38999M Series III para 4.5.23.2.1 | Pass |
| Random Vibration with Rain | Test for the purpose of assuring no disengagement of test covers, no backing off of the coupling mechanism or opening of the arm, no evidence of cracking/ breaking, or loosening of parts during and after vibration simulating helicopter operating vibration. Assess signs of water ingress. | MIL-DTL-38999M Ser.III paragraph 4.5.23.4 In accordance with EIA- 364-28 | Pass |
| Fluid Immersion | Test for detrimental damage (cracking, peeling, dissolution) after immersion in several fluids, | EIA 364-10 | Pass |

SPRING ACTION
ProSeal™ environmental connector covers

for MIL-DTL-5015, MS 3100, and MS3400 connectors
Threaded closure seal, full environmental

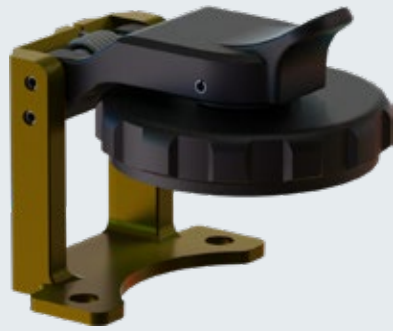


SPRING ACTION
ProSeal™ environmental connector covers

for MIL-DTL-5015, MS 3100, and MS3400 connectors
Threaded closure seal, full environmental

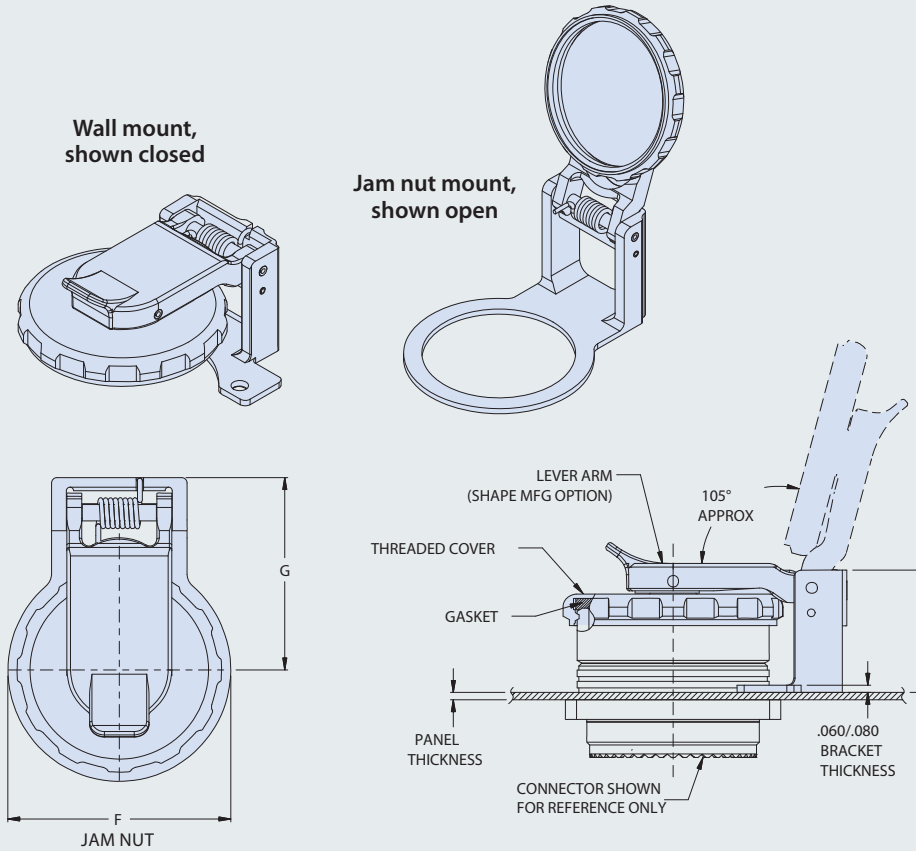


667-450 PROSEAL PROTECTIVE COVER FOR MIL-DTL-5015, MS3100, AND MS3400 CONNECTORS



| How to Order 667-450 | | | | | |
|-----------------------|---|----|----|----|---|
| Sample Part Number | 667-450 | NF | 06 | T1 | W |
| Series | ProSeal protective cover for MIL-DTL-5015, MS3100, and MS3400 | | | | |
| Material / Finish | See Table II | | | | |
| Dash No. / Shell Size | See Table I | | | | |
| Panel Thickness | See Table III | | | | |
| Type of Mounting | J = Jam Nut Mount Receptacle W = Wall Mount Receptacle | | | | |

- Threaded closure
- Full environmental protection
- Self-aligning
- Positive spring-action in closed position. Locks open at approximately 105° from receptacle face.



MATERIAL / FINISH

Cover, Lever Arm, Gimbal - Thermoplastic / Black
Bracket - see Table II
Spring / Pin / Rivet - 300 Series SST / Passivate
Sleeve - Delrin
Gasket - Silicone (optional)

| Dash No. | Shell Size | A max | | B ±.015 (.38) | | C ±.015 (.38) | | D ±.008 (.20) | | E max | | F ±.031 (.79) | | G max | | H max | |
|----------|------------|-------|-------|---------------|-------|---------------|-------|---------------|------|-------|-------|---------------|-------|-------|-------|-------|-------|
| | | in | mm | in | mm | in | mm | in | mm | in | mm | in | mm | in | mm | in | mm |
| 01 | 8S | .967 | 24.56 | 0.594 | 15.0 | .297 | 7.54 | .128 | 3.25 | .841 | 21.36 | .890 | 22.61 | .841 | 21.36 | .993 | 25.22 |
| 02 | 10S, 10SL | 1.061 | 26.95 | 0.719 | 18.26 | .360 | 9.14 | .134 | 3.40 | .903 | 22.94 | .937 | 23.80 | .893 | 22.68 | .993 | 25.22 |
| 03 | 12 | 1.156 | 29.36 | 0.812 | 20.62 | .406 | 10.31 | .134 | 3.40 | .966 | 24.54 | 1.062 | 26.97 | .966 | 24.54 | 1.243 | 31.57 |
| 04 | 12S | 1.156 | 29.36 | 0.812 | 20.62 | .406 | 10.31 | .134 | 3.40 | .966 | 24.54 | 1.062 | 26.97 | .966 | 24.54 | .993 | 25.22 |
| 05 | 14 | 1.250 | 31.75 | 0.906 | 23.01 | .453 | 11.51 | .134 | 3.40 | 1.034 | 26.26 | 1.188 | 30.18 | 1.034 | 26.26 | 1.243 | 31.57 |
| 06 | 14S | 1.250 | 31.75 | 0.906 | 23.01 | .453 | 11.51 | .134 | 3.40 | 1.034 | 26.26 | 1.188 | 30.18 | 1.034 | 26.26 | .993 | 25.22 |
| 07 | 16 | 1.341 | 33.89 | 0.969 | 24.61 | .485 | 12.32 | .134 | 3.40 | 1.113 | 28.27 | 1.375 | 34.93 | 1.133 | 28.78 | 1.243 | 31.57 |
| 08 | 16S | 1.341 | 33.89 | 0.969 | 24.61 | .485 | 12.32 | .134 | 3.40 | 1.113 | 28.27 | 1.375 | 34.93 | 1.133 | 28.78 | .993 | 25.22 |
| 09 | 18 | 1.467 | 37.26 | 1.062 | 26.97 | .531 | 13.49 | .134 | 3.40 | 1.149 | 29.18 | 1.625 | 41.28 | 1.149 | 29.18 | 1.243 | 31.57 |
| 10 | 20 | 1.593 | 40.46 | 1.156 | 29.36 | .578 | 14.68 | .134 | 3.40 | 1.365 | 34.67 | 1.750 | 44.45 | 1.365 | 34.67 | 1.328 | 33.73 |
| 11 | 22 | 1.719 | 43.66 | 1.250 | 31.75 | .625 | 15.88 | .134 | 3.40 | 1.429 | 36.30 | 2.000 | 50.80 | 1.429 | 36.30 | 1.328 | 33.73 |
| 12 | 24 | 1.871 | 47.52 | 1.375 | 34.93 | .688 | 17.48 | .154 | 3.91 | 1.491 | 37.87 | 2.150 | 54.61 | 1.491 | 37.87 | 1.328 | 33.73 |
| 13 | 28 | 2.042 | 51.87 | 1.562 | 39.67 | .781 | 19.84 | .154 | 3.91 | 1.656 | 42.06 | 2.309 | 58.65 | 1.708 | 43.38 | 1.328 | 33.73 |
| 14 | 32 | 2.280 | 57.91 | 1.750 | 44.45 | .875 | 22.23 | .177 | 4.50 | 1.743 | 44.27 | 2.562 | 65.07 | 1.867 | 47.42 | 1.390 | 35.31 |
| 15 | 36 | 2.530 | 64.26 | 1.938 | 49.23 | .969 | 24.61 | .177 | 4.50 | 1.977 | 50.22 | 2.875 | 73.03 | 2.124 | 53.95 | 1.390 | 35.31 |
| 16 | 40 | 2.780 | 70.61 | 2.188 | 55.58 | 1.094 | 27.79 | .177 | 4.50 | 2.196 | 55.78 | 3.145 | 79.88 | 2.214 | 53.95 | 1.390 | 35.31 |

| Sym | Material | Finish |
|-----|----------|--|
| MT | Aluminum | Nickel-PTFE |
| ZR | | Zinc-Nickel, Black (Tri-Valent CR) |
| M | | Electroless Nickel |
| NF | | Cad Plate / Olive Drab over Electroless Nickel |
| C | | Anodize / Black |
| UC | | Zinc Cobalt / Black |

| Dash No. | Panel Thickness* ±.030 (.76) | |
|----------|------------------------------|------|
| | in | mm |
| T0 | .000 | .00 |
| T1 | .062 | 1.57 |
| T2 | .125 | 3.18 |

*Jam nut mount is not available with panel thickness T0

SPRING ACTION
ProSeal™ environmental connector covers

for MIL-DTL-5015, MS 3100, and MS3400 connectors
Pressure seal, dust and immersion resistant

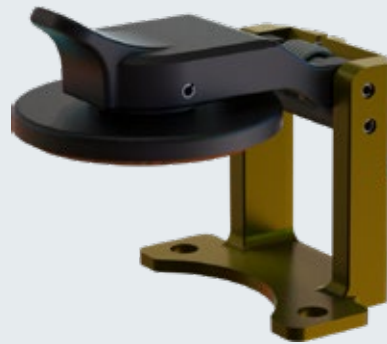


SPRING ACTION
ProSeal™ environmental connector covers

for MIL-DTL-5015, MS 3100, and MS3400 connectors
Pressure seal, dust and immersion resistant

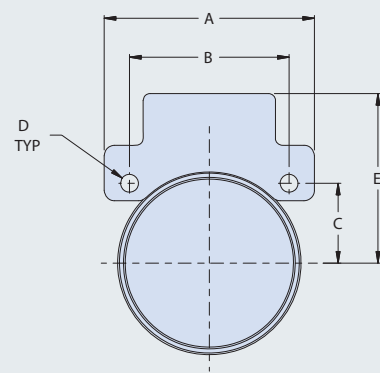


667-451 PROSEAL PROTECTIVE COVER FOR MIL-DTL-5015, MS3100, AND MS3400 CONNECTORS



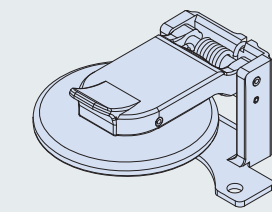
| How to Order 667-451 | | | | | |
|-----------------------|---|----|----|----|---|
| Sample Part Number | 667-451 | NF | 06 | T1 | W |
| Series | ProSeal protective cover for MIL-DTL-5015, MS3100, and MS3400 | | | | |
| Material / Finish | See Table II | | | | |
| Dash No. / Shell Size | See Table I | | | | |
| Panel Thickness | See Table III | | | | |
| Type of Mounting | J = Jam Nut Mount Receptacle W = Wall Mount Receptacle | | | | |

- Pressure seal, dust and immersion resistant
- Self-aligning
- Positive spring-action in closed position. Locks open at approximately 105° from receptacle face.

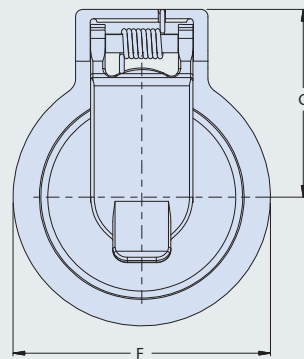
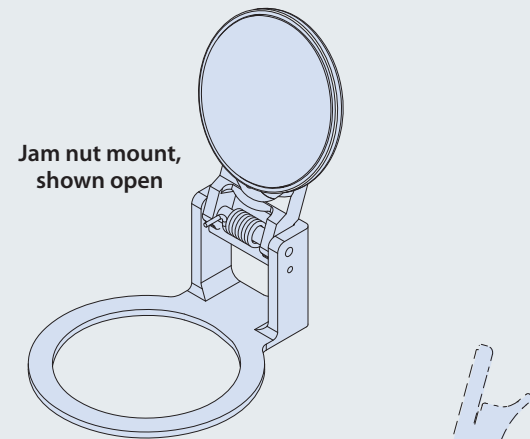


WALL MOUNT

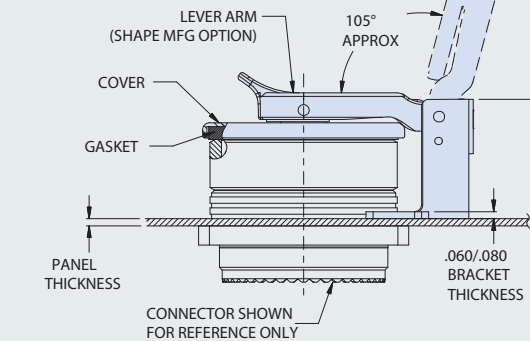
Wall mount, shown closed



Jam nut mount, shown open



JAM NUT



MATERIAL / FINISH

- Cover, Lever Arm, Gimbal - Thermoplastic / Black
- Bracket - see Table II
- Spring / Pin / Rivet - SST / Passivate
- Sleeve - Delrin
- Gasket - Silicone (optional)

| Table I: Dimensions | | | | | | | | | | | | | | | | | |
|---------------------|------------|-------|-------|---------------|-------|---------------|-------|---------------|------|-------|-------|---------------|-------|-------|-------|-------|-------|
| Dash No. | Shell Size | A max | | B ±.015 (.38) | | C ±.015 (.38) | | D ±.008 (.20) | | E max | | F ±.031 (.79) | | G max | | H max | |
| | | in | mm | in | mm | in | mm | in | mm | in | mm | in | mm | in | mm | in | mm |
| 01 | 8S | .967 | 24.56 | 0.594 | 15.0 | .297 | 7.54 | .128 | 3.25 | .841 | 21.36 | .890 | 22.61 | .841 | 21.36 | .993 | 25.22 |
| 02 | 10S, 10SL | 1.061 | 26.95 | 0.719 | 18.26 | .360 | 9.14 | .134 | 3.40 | .903 | 22.94 | .937 | 23.80 | .893 | 22.68 | .993 | 25.22 |
| 03 | 12 | 1.156 | 29.36 | 0.812 | 20.62 | .406 | 10.31 | .134 | 3.40 | .966 | 24.54 | 1.062 | 26.97 | .966 | 24.54 | 1.243 | 31.57 |
| 04 | 12S | 1.156 | 29.36 | 0.812 | 20.62 | .406 | 10.31 | .134 | 3.40 | .966 | 24.54 | 1.062 | 26.97 | .966 | 24.54 | .993 | 25.22 |
| 05 | 14 | 1.250 | 31.75 | 0.906 | 23.01 | .453 | 11.51 | .134 | 3.40 | 1.034 | 26.26 | 1.188 | 30.18 | 1.034 | 26.26 | 1.243 | 31.57 |
| 06 | 14S | 1.250 | 31.75 | 0.906 | 23.01 | .453 | 11.51 | .134 | 3.40 | 1.034 | 26.26 | 1.188 | 30.18 | 1.034 | 26.26 | .993 | 25.22 |
| 07 | 16 | 1.341 | 33.89 | 0.969 | 24.61 | .485 | 12.32 | .134 | 3.40 | 1.113 | 28.27 | 1.375 | 34.93 | 1.133 | 28.78 | 1.243 | 31.57 |
| 08 | 16S | 1.341 | 33.89 | 0.969 | 24.61 | .485 | 12.32 | .134 | 3.40 | 1.113 | 28.27 | 1.375 | 34.93 | 1.133 | 28.78 | .993 | 25.22 |
| 09 | 18 | 1.467 | 37.26 | 1.062 | 26.97 | .531 | 13.49 | .134 | 3.40 | 1.149 | 29.18 | 1.625 | 41.28 | 1.149 | 29.18 | 1.243 | 31.57 |
| 10 | 20 | 1.593 | 40.46 | 1.156 | 29.36 | .578 | 14.68 | .134 | 3.40 | 1.365 | 34.67 | 1.750 | 44.45 | 1.365 | 34.67 | 1.328 | 33.73 |
| 11 | 22 | 1.719 | 43.66 | 1.250 | 31.75 | .625 | 15.88 | .134 | 3.40 | 1.429 | 36.30 | 2.000 | 50.80 | 1.429 | 36.30 | 1.328 | 33.73 |
| 12 | 24 | 1.871 | 47.52 | 1.375 | 34.93 | .688 | 17.48 | .154 | 3.91 | 1.491 | 37.87 | 2.150 | 54.61 | 1.491 | 37.87 | 1.328 | 33.73 |
| 13 | 28 | 2.042 | 51.87 | 1.562 | 39.67 | .781 | 19.84 | .154 | 3.91 | 1.656 | 42.06 | 2.309 | 58.65 | 1.708 | 43.38 | 1.328 | 33.73 |
| 14 | 32 | 2.280 | 57.91 | 1.750 | 44.45 | .875 | 22.23 | .177 | 4.50 | 1.743 | 44.27 | 2.562 | 65.07 | 1.867 | 47.42 | 1.390 | 35.31 |
| 15 | 36 | 2.530 | 64.26 | 1.938 | 49.23 | .969 | 24.61 | .177 | 4.50 | 1.977 | 50.22 | 2.875 | 73.03 | 2.124 | 53.95 | 1.390 | 35.31 |
| 16 | 40 | 2.780 | 70.61 | 2.188 | 55.58 | 1.094 | 27.79 | .177 | 4.50 | 2.196 | 55.78 | 3.145 | 79.88 | 2.214 | 53.95 | 1.390 | 35.31 |

| Table II: Material and Finish | | |
|-------------------------------|----------|--|
| Sym | Material | Finish |
| MT | Aluminum | Nickel-PTFE |
| ZR | | Zinc-Nickel, Black (Tri-Valent CR) |
| M | | Electroless Nickel |
| NF | | Cad Plate / Olive Drab over Electroless Nickel |
| C | | Anodize / Black |
| UC | | Zinc Cobalt / Black |

| Table III: Panel Thickness | | |
|----------------------------|------------------------------|------|
| Dash No. | Panel Thickness* ±.030 (.76) | |
| | in | mm |
| T0 | .000 | .00 |
| T1 | .062 | 1.57 |
| T2 | .125 | 3.18 |

*Jam nut mount is not available with panel thickness T0

SPRING ACTION
ProSeal™ environmental connector covers

for MIL-DTL-5015, ITS31030 and GT030 connectors
Pressure seal, dust and immersion resistant

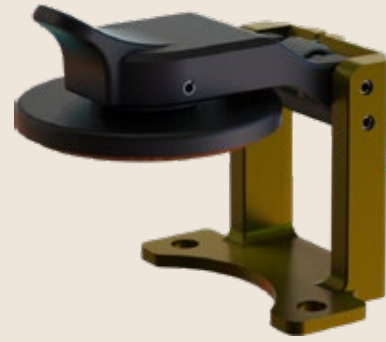


SPRING ACTION
ProSeal™ environmental connector covers

for MIL-DTL-5015, ITS31030 and GT030 connectors
Pressure seal, dust and immersion resistant



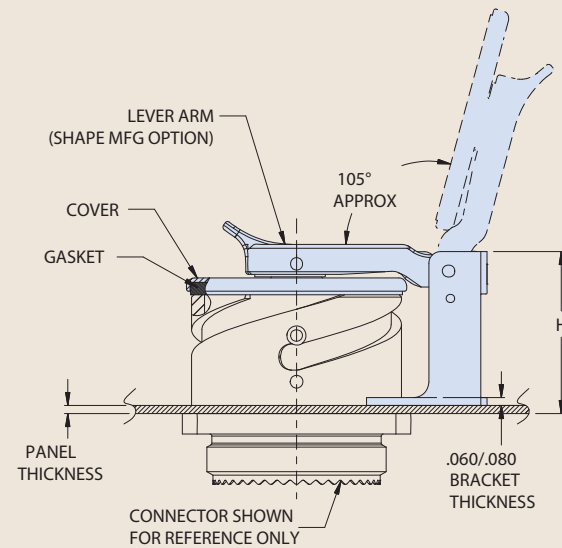
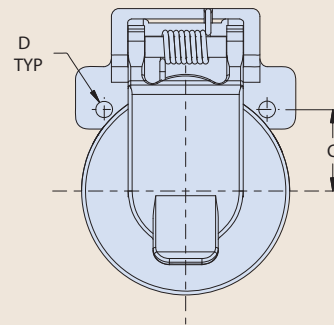
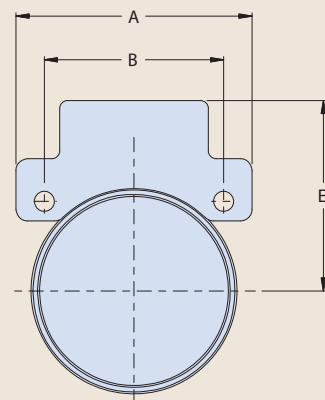
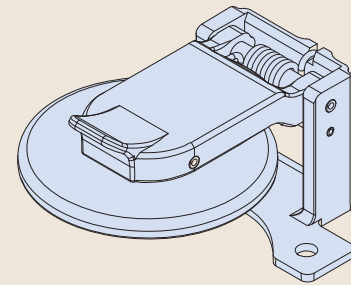
667-488 PROSEAL PROTECTIVE COVER FOR MIL-DTL-5015, ITS31030, AND GT030 CONNECTORS



| How to Order 667-488 | | | | | |
|-----------------------|---|----|----|----|---|
| Sample Part Number | 667-488 | NF | 06 | T1 | W |
| Series | ProSeal protective cover for MIL-DTL-5015, ITS31030, and GT030 connectors | | | | |
| Material / Finish | See Table II | | | | |
| Dash No. / Shell Size | See Table I | | | | |
| Panel Thickness | See Table III | | | | |
| Type of Mounting | W = Wall Mount Receptacle | | | | |

- Pressure seal, dust and immersion resistant
- Self-aligning
- Positive spring-action in closed position. Locks open at approximately 105° from receptacle face.

Wall mount, shown closed



MATERIAL / FINISH

Cover, Lever Arm, Gimbal - Thermoplastic / Black
Bracket - see Table II
Spring / Pin / Rivet - SST / Passivate
Sleeve - Delrin
Gasket - Silicone (optional)

| Dash No. | Shell Size | Table I: Dimensions | | | | | | | | | | | |
|----------|------------|---------------------|-------|---------------|-------|---------------|-------|---------------|------|-------|-------|-------|-------|
| | | A max | | B ±.015 (.38) | | C ±.015 (.38) | | D ±.008 (.20) | | E max | | H max | |
| | | in | mm | in | mm | in | mm | in | mm | in | mm | in | mm |
| 02 | 10S, 10SL | 1.061 | 26.95 | 0.719 | 18.26 | .360 | 9.14 | .134 | 3.40 | .903 | 22.94 | 1.133 | 28.78 |
| 06 | 14S | 1.250 | 31.75 | 0.906 | 23.01 | .453 | 11.51 | .134 | 3.40 | 1.034 | 26.26 | 1.133 | 28.78 |
| 07 | 16 | 1.341 | 33.89 | 0.969 | 24.61 | .485 | 12.32 | .134 | 3.40 | 1.113 | 28.27 | 1.323 | 33.60 |
| 08 | 16S | 1.341 | 33.89 | 0.969 | 24.61 | .485 | 12.32 | .134 | 3.40 | 1.113 | 28.27 | 1.133 | 28.78 |
| 09 | 18 | 1.467 | 37.26 | 1.062 | 26.97 | .531 | 13.49 | .134 | 3.40 | 1.149 | 29.18 | 1.384 | 35.15 |
| 10 | 20 | 1.593 | 40.46 | 1.156 | 29.36 | .578 | 14.68 | .134 | 3.40 | 1.365 | 34.67 | 1.469 | 37.31 |
| 11 | 22 | 1.719 | 43.66 | 1.250 | 31.75 | .625 | 15.88 | .134 | 3.40 | 1.429 | 36.30 | 1.469 | 37.31 |
| 12 | 24 | 1.871 | 47.52 | 1.375 | 34.93 | .688 | 17.48 | .154 | 3.91 | 1.491 | 37.87 | 1.407 | 35.74 |
| 13 | 28 | 2.042 | 51.87 | 1.562 | 39.67 | .781 | 19.84 | .154 | 3.91 | 1.589 | 40.36 | 1.447 | 36.75 |
| 14 | 32 | 2.230 | 56.64 | 1.750 | 44.45 | .875 | 22.23 | .177 | 4.50 | 1.714 | 43.54 | 1.446 | 36.73 |

| Table II: Material and Finish | | |
|-------------------------------|----------|--|
| Sym | Material | Finish |
| MT | Aluminum | Nickel-PTFE |
| ZR | | Zinc-Nickel, Black (Tri-Valent CR) |
| M | | Electroless Nickel |
| NF | | Cad Plate / Olive Drab over Electroless Nickel |
| C | | Anodize / Black |
| UC | | Zinc Cobalt / Black |

| Table III: Panel Thickness | | |
|----------------------------|------------------------------|------|
| Dash No. | Panel Thickness* ±.030 (.76) | |
| | in | mm |
| T1 | .062 | 1.57 |
| T2 | .125 | 3.18 |

5015 - VG95234

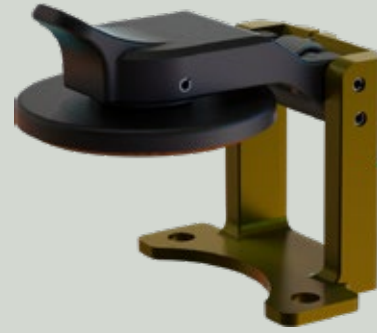
SPRING ACTION
ProSeal™ environmental connector covers
 for MIL-DTL-26482 Series I and II connectors
 Pressure seal, dust and immersion resistant



SPRING ACTION
ProSeal™ environmental connector covers
 for MIL-DTL-26482 Series I and II connectors
 Pressure seal, dust and immersion resistant

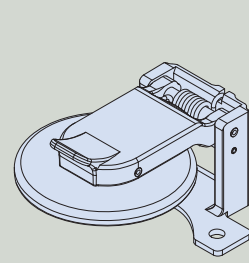


667-472 PROSEAL PROTECTIVE COVER FOR MIL-DTL-26482 SERIES I AND II CONNECTORS

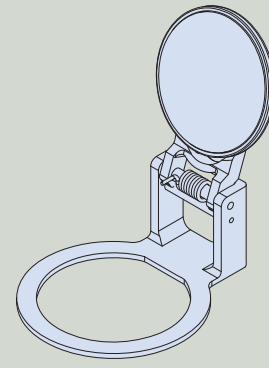


| How to Order 667-472 | | | | | |
|---------------------------|---|-----------|-----------|-----------|----------|
| Sample Part Number | 667-472 | NF | 16 | T1 | W |
| Series | ProSeal protective cover for MIL-DTL-26482 Series I and II | | | | |
| Material / Finish | See Table II | | | | |
| Shell Size | See Table I | | | | |
| Panel Thickness | See Table III | | | | |
| Type of Mounting | J = Jam Nut Mount Receptacle (not available with Panel Thickness T0) W = Wall Mount Receptacle | | | | |

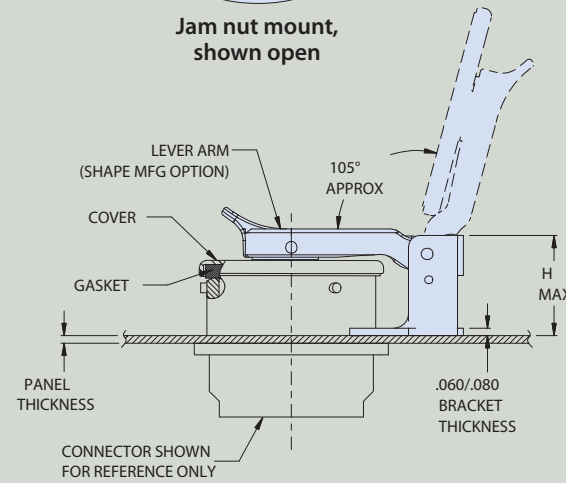
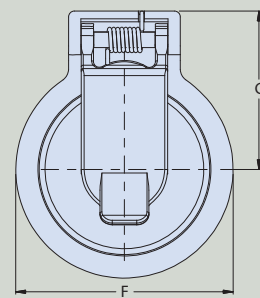
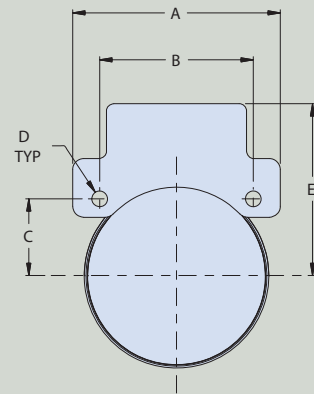
- Pressure seal, dust and immersion resistant
- Self-aligning
- Positive spring-action in closed position. Locks open at approximately 105° from receptacle face.



Wall mount, shown closed



Jam nut mount, shown open



MATERIAL / FINISH

Cover, Lever Arm, Gimbal - Thermoplastic / Black
 Bracket - see Table II
 Spring / Pin / Rivet - 300 Series SST / Passivate
 Sleeve - Delrin
 Gasket - Silicone (optional)

| Shell Size | A Dim max | | B Dim | | C Dim | | D ±.010 (.25) | | E max | | F ±.031 (.79) | | G max | |
|------------|-----------|-------|-------|-------|-------|-------|---------------|------|-------|-------|---------------|-------|-------|-------|
| | in | mm | in | mm | in | mm | in | mm | in | mm | in | mm | in | mm |
| 08 | .967 | 24.56 | 0.594 | 15.0 | .297 | 7.54 | .120 | 3.05 | .841 | 21.36 | .850 | 21.59 | .826 | 20.98 |
| 10 | 1.061 | 26.95 | 0.719 | 18.26 | .360 | 9.14 | .120 | 3.05 | .903 | 22.94 | 1.000 | 25.40 | .901 | 22.89 |
| 12 | 1.156 | 29.36 | 0.812 | 20.62 | .406 | 10.31 | .120 | 3.05 | .966 | 24.54 | 1.188 | 30.18 | .995 | 25.27 |
| 14 | 1.250 | 31.75 | 0.906 | 23.01 | .453 | 11.51 | .120 | 3.05 | 1.034 | 26.26 | 1.310 | 33.27 | 1.056 | 26.82 |
| 16 | 1.341 | 33.89 | 0.969 | 24.61 | .485 | 12.32 | .120 | 3.05 | 1.113 | 28.27 | 1.500 | 38.10 | 1.151 | 29.24 |
| 18 | 1.467 | 37.26 | 1.062 | 26.97 | .531 | 13.49 | .120 | 3.05 | 1.149 | 29.18 | 1.625 | 41.28 | 1.514 | 38.46 |
| 20 | 1.593 | 40.46 | 1.156 | 29.36 | .578 | 14.68 | .120 | 3.05 | 1.365 | 34.67 | 1.750 | 44.45 | 1.410 | 35.81 |
| 22 | 1.719 | 43.66 | 1.250 | 31.75 | .625 | 15.88 | .120 | 3.05 | 1.429 | 36.30 | 1.875 | 47.63 | 1.473 | 37.41 |
| 24 | 1.841 | 46.76 | 1.375 | 34.93 | .688 | 17.48 | .147 | 3.73 | 1.491 | 37.87 | 2.062 | 52.37 | 1.566 | 39.78 |

| Sym | Material | Finish |
|-----|----------|--|
| MT | Aluminum | Nickel-PTFE |
| ZR | | Zinc-Nickel, Black (Tri-Valent CR) |
| M | | Electroless Nickel |
| NF | | Cad Plate / Olive Drab over Electroless Nickel |
| C | | Anodize / Black |
| UC | | Zinc Cobalt / Black |

| Dash No. | Panel Thickness ±.030 (.76) | | Shell Size | H Max | | | |
|----------|-----------------------------|------|------------|------------|-------|---------------|-------|
| | in | mm | | Wall Mount | | Jam Nut Mount | |
| | | | | in | mm | in | mm |
| T0 | .000 | .00 | 08-18 | .718 | 18.24 | N/A | |
| | | | 20-22 | .946 | 24.03 | | |
| | | | 24 | .987 | 25.07 | | |
| T1 | .062 | 1.57 | 08-18 | .656 | 16.66 | .935 | 23.75 |
| | | | 20-22 | .876 | 22.25 | 1.238 | 31.45 |
| | | | 24 | .925 | 23.50 | 1.341 | 34.06 |
| T2 | .125 | 3.18 | 08-18 | N/A | N/A | .875 | 22.23 |
| | | | 20-22 | .814 | 20.68 | 1.178 | 29.92 |
| | | | 24 | .863 | 21.92 | 1.218 | 30.94 |

MIL-DTL-26482

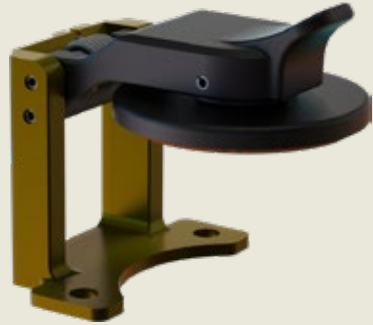
SPRING ACTION
ProSeal™ environmental connector covers
 for MIL-DTL-38999 Series I connectors
 Pressure seal, dust and immersion resistant



SPRING ACTION
ProSeal™ environmental connector covers
 for MIL-DTL-38999 Series I connectors
 Pressure seal, dust and immersion resistant

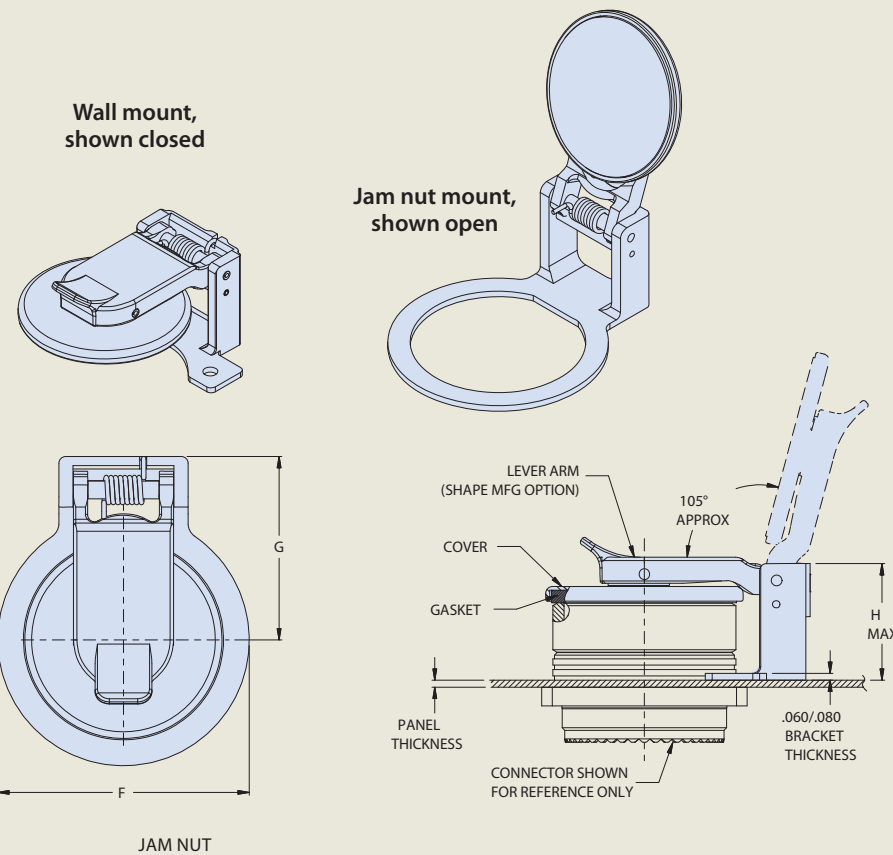


667-467 PROSEAL PROTECTIVE COVER FOR D38999 SERIES I CONNECTORS



| How to Order 667-467 | | | | | |
|---------------------------|---|-----------|-----------|-----------|----------|
| Sample Part Number | 667-467 | NF | 17 | T1 | J |
| Series | ProSeal protective cover for D38999 Series I connectors | | | | |
| Material / Finish | See Table II | | | | |
| Shell Size | See Table I | | | | |
| Panel Thickness | See Table III | | | | |
| Type of Mounting | J = Jam Nut Mount Receptacle W = Wall Mount Receptacle | | | | |

- Pressure seal, dust and immersion resistant
- Self-aligning
- Positive spring-action in closed position. Locks open at approximately 105° from receptacle face.



MATERIAL / FINISH

Cover, Lever Arm, Gimbal - Thermoplastic / black
 Bracket - See Table II
 Spring / Pin / Rivet - 300 Series SST / Passivate
 Sleeve - Delrin
 Gasket - Silicone (optional)

| Shell Size | Table I: Dimensions | | | | | | | | | | | | | |
|------------|---------------------|-------|-------|-------|-------|-------|---------------|------|---------------|-------|-----------|-------|-----------|-------|
| | A Dim max | | B Dim | | C Dim | | D ±.008 (.20) | | E ±.031 (.79) | | F Dim max | | J Dia max | |
| | in | mm | in | mm | in | mm | in | mm | in | mm | in | mm | in | mm |
| 09 | 0.937 | 23.80 | 0.719 | 18.26 | 0.360 | 9.14 | 0.128 | 3.25 | 1.031 | 26.19 | 0.913 | 23.19 | 0.727 | 18.47 |
| 11 | 1.031 | 26.19 | 0.812 | 20.62 | 0.406 | 10.31 | 0.128 | 3.25 | 1.125 | 28.58 | 0.961 | 24.41 | 0.853 | 21.67 |
| 13 | 1.126 | 28.60 | 0.906 | 23.01 | 0.453 | 11.51 | 0.128 | 3.25 | 1.375 | 34.93 | 1.083 | 27.51 | 1.003 | 25.48 |
| 15 | 1.220 | 30.99 | 0.969 | 24.61 | 0.485 | 12.32 | 0.128 | 3.25 | 1.560 | 39.62 | 1.178 | 29.92 | 1.128 | 28.65 |
| 17 | 1.311 | 33.30 | 1.062 | 26.97 | 0.531 | 13.49 | 0.128 | 3.25 | 1.625 | 41.28 | 1.211 | 30.76 | 1.253 | 31.83 |
| 19 | 1.437 | 36.50 | 1.156 | 29.36 | 0.578 | 14.68 | 0.128 | 3.25 | 1.750 | 44.45 | 1.273 | 32.33 | 1.360 | 34.54 |
| 21 | 1.563 | 39.70 | 1.250 | 31.75 | 0.625 | 15.88 | 0.128 | 3.25 | 2.000 | 50.80 | 1.538 | 39.07 | 1.485 | 37.72 |
| 23 | 1.689 | 42.90 | 1.375 | 34.93 | 0.688 | 17.48 | 0.128 | 3.25 | 2.150 | 54.61 | 1.614 | 41.00 | 1.610 | 40.89 |
| 25 | 1.841 | 46.76 | 1.500 | 38.10 | 0.750 | 19.05 | 0.128 | 3.25 | 2.218 | 56.34 | 1.647 | 41.83 | 1.735 | 44.07 |

| Table II: Material and Finish | | |
|-------------------------------|----------|--|
| Sym | Material | Finish |
| MT | Aluminum | Nickel-PTFE |
| ZR | | Zinc-Nickel, Black (Tri-Valent CR) |
| M | | Electroless Nickel |
| NF | | Cad Plate / Olive Drab over Electroless Nickel |
| C | | Anodize / Black |
| UC | | Zinc Cobalt / Black |

| Dash No. | Panel Thickness* ±.030 (.76) | | Shell Size | G ± .06 | | | |
|----------|------------------------------|------|------------|---------------|-------|------------|-------|
| | in | mm | | Jam Nut Mount | | Wall Mount | |
| | | | in | mm | in | mm | |
| T0 | .000 | .00 | 09-19 | N/A | N/A | 1.039 | 26.39 |
| | | | 21-25 | N/A | N/A | 1.094 | 27.79 |
| T1 | .062 | 1.57 | 09-19 | 1.041 | 26.44 | 0.977 | 24.82 |
| | | | 21-25 | 1.126 | 28.60 | 1.032 | 26.21 |
| T2 | .125 | 3.18 | 09-19 | N/A | N/A | 0.915 | 23.24 |
| | | | 21-25 | N/A | N/A | 0.970 | 24.64 |

*Jam nut mount is not available with panel thicknesses T0 and T2

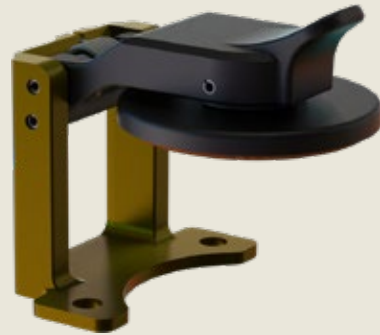
SPRING ACTION
ProSeal™ environmental connector covers
 for MIL-DTL-38999 Series II connectors
 Pressure seal, dust and immersion resistant



SPRING ACTION
ProSeal™ environmental connector covers
 for MIL-DTL-38999 Series II connectors
 Pressure seal, dust and immersion resistant

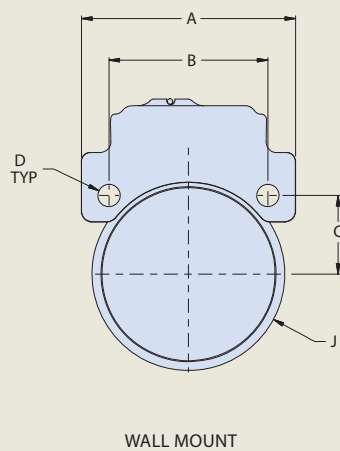
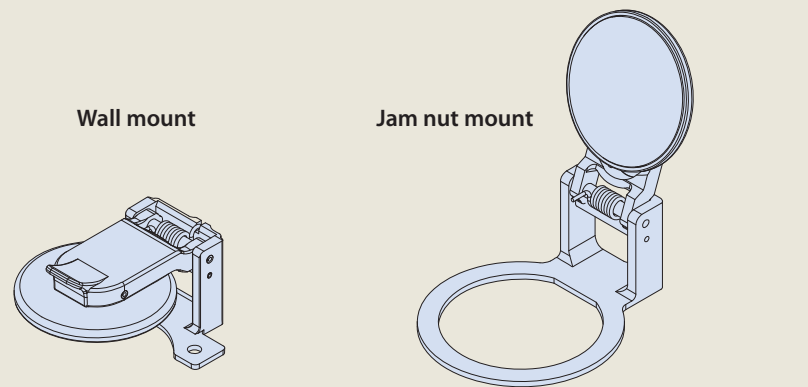


667-447 PROSEAL PROTECTIVE COVER FOR D38999 SERIES II / M3450 CONNECTORS

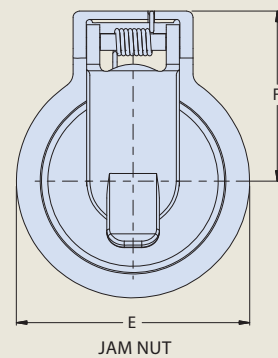


| How to Order 667-447 | | | | | |
|----------------------|--|----|----|----|---|
| Sample Part Number | 667-447 | NF | 18 | T1 | W |
| Series | ProSeal protective cover for D38999 Series II / M3450 connectors | | | | |
| Material / Finish | See Table II | | | | |
| Shell Size | See Table I | | | | |
| Panel Thickness | See Table III | | | | |
| Type of Mounting | J = Jam Nut Mount Receptacle W = Wall Mount Receptacle with slotted holes | | | | |

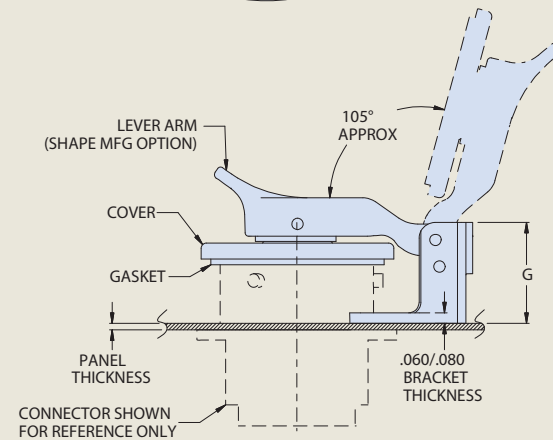
- Pressure seal, dust and immersion resistant
- Self-aligning
- Positive spring-action in closed position. Locks open at approximately 105° from receptacle face.



WALL MOUNT



JAM NUT



MATERIAL / FINISH

Cover, Lever Arm, Gimbal -Thermoplastic / Black
 Bracket-see Table II
 Spring / Roll Pin - Stainless Steel / Passivate
 Sleeve - Delrin
 Gasket - Silicone (optional)

| Table I: Dimensions | | | | | | | | | | | | | | |
|---------------------|-----------|-------|-------|-------|-------|-------|---------------|------|---------------|-------|---------------|-------|---------------|-------|
| Shell Size | A Dim max | | B Dim | | C Dim | | D ±.008 (.20) | | E ±.031 (.79) | | F ±.031 (.79) | | H ±.005 (.13) | |
| | in | mm | in | mm | in | mm | in | mm | in | mm | in | mm | in | mm |
| 08 | .967 | 24.56 | 0.719 | 18.26 | 0.360 | 9.14 | 0.128 | 3.25 | 1.031 | 26.19 | .883 | 22.43 | 0.727 | 18.47 |
| 10 | 1.061 | 26.95 | 0.812 | 20.62 | 0.406 | 10.31 | 0.128 | 3.25 | 1.125 | 28.58 | .931 | 23.65 | 0.853 | 21.67 |
| 12 | 1.156 | 29.36 | 0.906 | 23.01 | 0.453 | 11.51 | 0.128 | 3.25 | 1.375 | 34.93 | 1.055 | 26.80 | 1.003 | 25.48 |
| 14 | 1.250 | 31.75 | 0.969 | 24.61 | 0.485 | 12.32 | 0.128 | 3.25 | 1.560 | 39.62 | 1.148 | 29.16 | 1.128 | 28.65 |
| 16 | 1.341 | 33.89 | 1.062 | 26.97 | 0.531 | 13.49 | 0.128 | 3.25 | 1.625 | 41.28 | 1.181 | 30.00 | 1.253 | 31.83 |
| 18 | 1.477 | 37.52 | 1.156 | 29.36 | 0.578 | 14.68 | 0.128 | 3.25 | 1.750 | 44.45 | 1.243 | 31.57 | 1.360 | 34.54 |
| 20 | 1.593 | 40.46 | 1.250 | 31.75 | 0.625 | 15.88 | 0.128 | 3.25 | 2.000 | 50.80 | 1.507 | 38.28 | 1.485 | 37.72 |
| 22 | 1.719 | 43.66 | 1.375 | 34.93 | 0.688 | 17.48 | 0.154 | 3.91 | 2.150 | 54.61 | 1.584 | 40.23 | 1.610 | 40.89 |
| 24 | 1.841 | 46.76 | 1.500 | 38.10 | 0.750 | 19.05 | 0.154 | 3.91 | 2.218 | 56.34 | 1.617 | 41.07 | 1.735 | 44.07 |

| Table II: Material and Finish | | |
|-------------------------------|----------|--|
| Sym | Material | Finish |
| MT | Aluminum | Nickel-PTFE |
| ZR | | Zinc-Nickel, Black (Tri-Valent CR) |
| M | | Electroless Nickel |
| NF | | Cad Plate / Olive Drab over Electroless Nickel |
| C | | Anodize / Black |
| UC | | Zinc Cobalt / Black |

| Table III: Panel Thickness | | | | | | | |
|----------------------------|------------------------------|------|------------|---------------|-------|------------|-------|
| Dash No. | Panel Thickness* ±.030 (.76) | | Shell Size | G ± .06 | | | |
| | in | mm | | Jam Nut Mount | | Wall Mount | |
| | | | | in | mm | in | mm |
| T0 | .000 | .00 | 08-18 | N/A | N/A | .563 | 14.30 |
| | | | 20-24 | N/A | N/A | .648 | 16.46 |
| T1 | .062 | 1.57 | 08-18 | .619 | 15.72 | .626 | 15.90 |
| | | | 20-24 | .730 | 18.54 | .711 | 18.06 |
| T2 | .125 | 3.18 | 08-18 | N/A | N/A | .564 | 14.33 |
| | | | 20-24 | N/A | N/A | .649 | 16.48 |

*Jam nut mount is not available with panel thickness T0

SPRING ACTION
ProSeal™ environmental connector covers



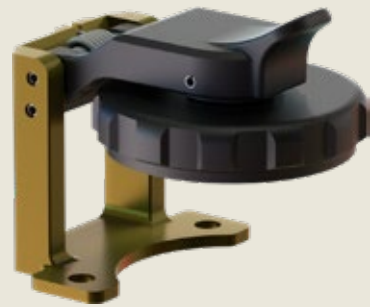
for MIL-DTL-38999 Series III / SuperNine® connectors
Threaded closure seal, full environmental

SPRING ACTION
ProSeal™ environmental connector covers



for MIL-DTL-38999 Series III / SuperNine® connectors
Threaded closure seal, full environmental

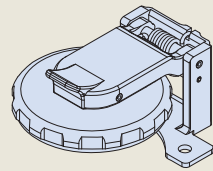
667-448 PROSEAL PROTECTIVE COVER FOR D38999 SERIES III CONNECTORS



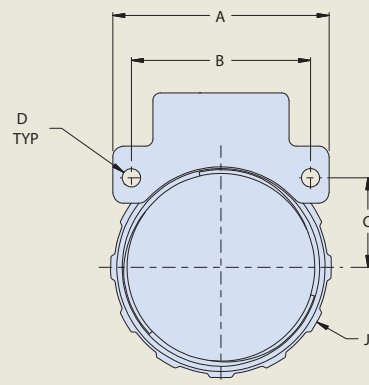
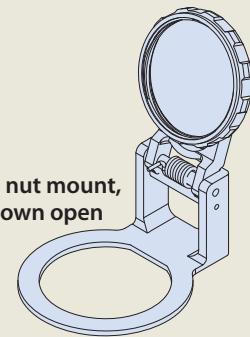
| How to Order 667-448 | | | | | |
|----------------------|---|----|----|----|---|
| Sample Part Number | 667-448 | NF | 17 | T1 | J |
| Series | ProSeal protective cover for D38999 Series III connectors | | | | |
| Material / Finish | See Table II | | | | |
| Shell Size | See Table I | | | | |
| Panel Thickness | See Table III | | | | |
| Type of Mounting | J = Jam Nut Mount Receptacle W = Wall Mount Receptacle | | | | |

- Threaded closure
- Full environmental protection
- Self-aligning
- Positive spring-action in closed position. Locks open at approximately 105° from receptacle face.

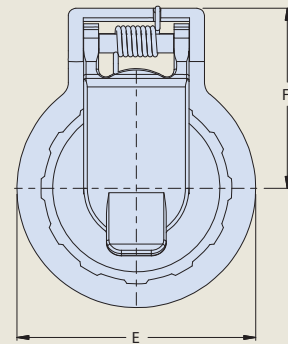
Wall mount, shown closed



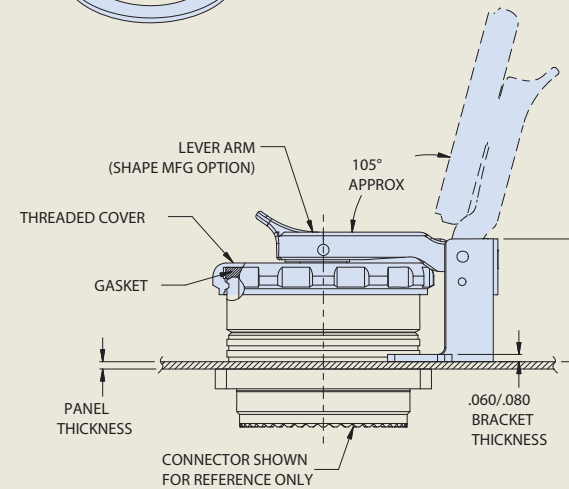
Jam nut mount, shown open



WALL MOUNT



JAM NUT



MATERIAL / FINISH

- Cover, Lever Arm, Gimbal - Thermoplastic / Black
- Bracket - see Table II
- Spring / Pin / Rivet - 300 Series SST / Passivate
- Sleeve - Delrin
- Gasket - Silicone (optional)

| Shell Size | Table I: Dimensions | | | | | | | | | | | | | |
|------------|---------------------|-------|-------|-------|-------|-------|---------------|------|---------------|-------|-----------|-------|-----------|-------|
| | A Dim max | | B Dim | | C Dim | | D ±.008 (.20) | | E ±.031 (.79) | | F Dim max | | J Dia max | |
| | in | mm | in | mm | in | mm | in | mm | in | mm | in | mm | in | mm |
| 09 | 0.937 | 23.80 | 0.719 | 18.26 | 0.360 | 9.14 | 0.128 | 3.25 | 1.031 | 26.19 | .913 | 23.19 | .872 | 22.15 |
| 11 | 1.031 | 26.19 | 0.812 | 20.62 | 0.406 | 10.31 | 0.128 | 3.25 | 1.125 | 28.58 | .961 | 24.41 | .988 | 25.10 |
| 13 | 1.126 | 28.60 | 0.906 | 23.01 | 0.453 | 11.51 | 0.128 | 3.25 | 1.375 | 34.93 | 1.083 | 27.51 | 1.129 | 28.68 |
| 15 | 1.220 | 30.99 | 0.969 | 24.61 | 0.485 | 12.32 | 0.128 | 3.25 | 1.560 | 39.62 | 1.178 | 29.92 | 1.280 | 32.51 |
| 17 | 1.311 | 33.30 | 1.062 | 26.97 | 0.531 | 13.49 | 0.128 | 3.25 | 1.625 | 41.28 | 1.211 | 30.76 | 1.441 | 36.60 |
| 19 | 1.437 | 36.50 | 1.156 | 29.36 | 0.578 | 14.68 | 0.128 | 3.25 | 1.750 | 44.45 | 1.273 | 32.33 | 1.499 | 38.07 |
| 21 | 1.563 | 39.70 | 1.250 | 31.75 | 0.625 | 15.88 | 0.128 | 3.25 | 2.000 | 50.80 | 1.538 | 39.07 | 1.630 | 41.40 |
| 23 | 1.689 | 42.90 | 1.375 | 34.93 | 0.688 | 17.48 | 0.154 | 3.91 | 2.150 | 54.61 | 1.614 | 41.00 | 1.755 | 44.58 |
| 25 | 1.841 | 46.76 | 1.500 | 38.10 | 0.750 | 19.05 | 0.154 | 3.91 | 2.218 | 56.34 | 1.647 | 41.83 | 1.880 | 47.75 |

| Table II: Material and Finish | | |
|-------------------------------|----------|--|
| Sym | Material | Finish |
| MT | Aluminum | Nickel-PTFE |
| ZR | | Zinc-Nickel, Black (Tri-Valent CR) |
| M | | Electroless Nickel |
| NF | | Cad Plate / Olive Drab over Electroless Nickel |
| C | | Anodize / Black |
| UC | | Zinc Cobalt / Black |

| Dash No. | Panel Thickness* ±.030 (.76) | | Shell Size | G ±.06 | | | |
|----------|------------------------------|------|------------|---------------|-------|------------|-------|
| | in | mm | | Jam Nut Mount | | Wall Mount | |
| | | | | in | mm | in | mm |
| T0 | .000 | .00 | 09-19 | N/A | N/A | 1.039 | 26.39 |
| | | | 21-25 | N/A | N/A | 1.094 | 27.79 |
| T1 | .062 | 1.57 | 09-19 | 1.041 | 26.44 | 0.977 | 24.82 |
| | | | 21-25 | 1.126 | 28.60 | 1.032 | 26.21 |
| T2 | .125 | 3.18 | 09-19 | 0.979 | 24.87 | 0.915 | 23.24 |
| | | | 21-25 | 1.064 | 27.03 | 0.970 | 24.64 |

*Jam nut mount is not available with panel thickness T0

SPRING ACTION
ProSeal™ environmental connector covers



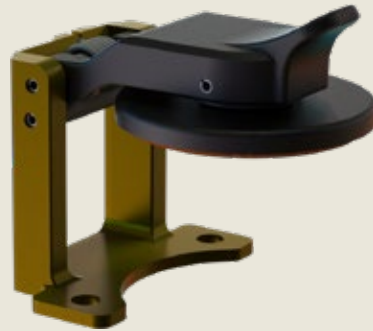
for MIL-DTL-38999 Series III / SuperNine® connectors
Pressure seal, dust and immersion resistant

SPRING ACTION
ProSeal™ environmental connector covers



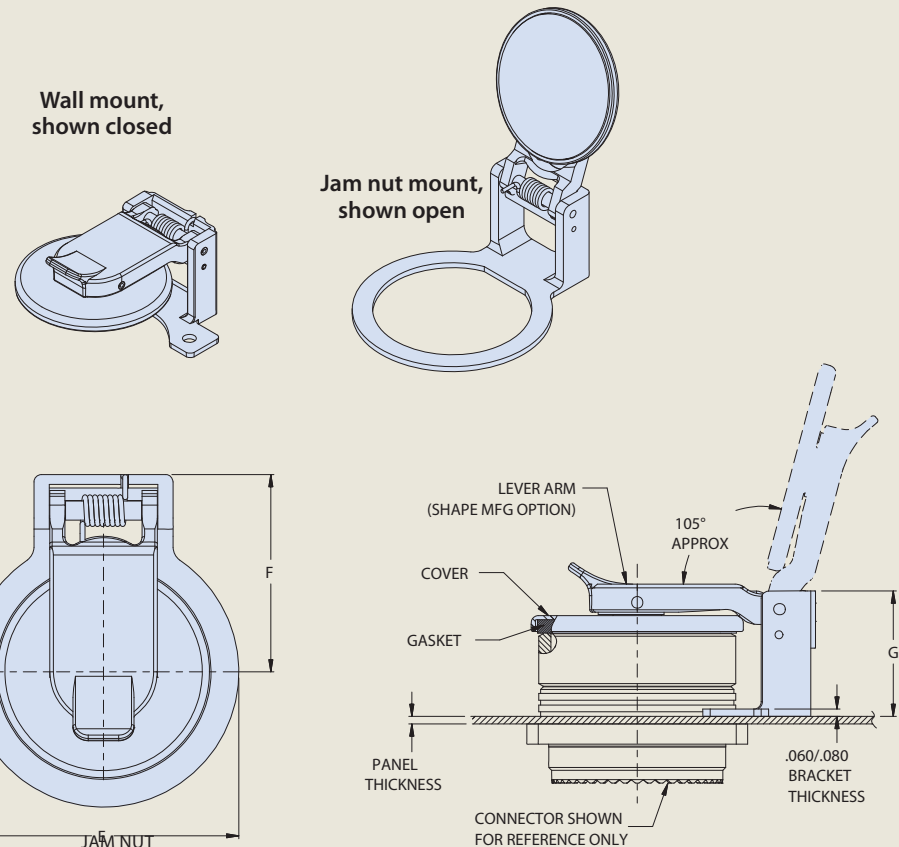
for MIL-DTL-38999 Series III / SuperNine® connectors
Pressure seal, dust and immersion resistant

667-449 PROSEAL PROTECTIVE COVER FOR D38999 SERIES III CONNECTORS



| How to Order 667-449 | | | | | |
|----------------------|---|----|----|----|---|
| Sample Part Number | 667-449 | NF | 17 | T1 | J |
| Series | ProSeal protective cover for D38999 Series III connectors | | | | |
| Material / Finish | See Table II | | | | |
| Shell Size | See Table I | | | | |
| Panel Thickness | See Table III | | | | |
| Type of Mounting | J = Jam Nut Mount Receptacle W = Wall Mount Receptacle | | | | |

- Pressure seal, dust and immersion resistant
- Self-aligning
- Positive spring-action in closed position. Locks open at approximately 105° from receptacle face.



MATERIAL / FINISH

Cover, Lever Arm, Gimbal - Thermoplastic / Black
Bracket - see Table II
Spring / Pin / Rivet - 300 Series SST / Passivate
Sleeve - Delrin
Gasket - Silicone (optional)

| Shell Size | A Dim max | | B Dim | | C Dim | | D ±.008 (.20) | | E ±.031 (.79) | | F Dim max | | J Dia max | |
|------------|-----------|-------|-------|-------|-------|-------|---------------|------|---------------|-------|-----------|-------|-----------|-------|
| | in | mm | in | mm | in | mm | in | mm | in | mm | in | mm | in | mm |
| 09 | 0.937 | 23.80 | 0.719 | 18.26 | 0.360 | 9.14 | 0.128 | 3.25 | 1.031 | 26.19 | .913 | 23.19 | .735 | 18.67 |
| 11 | 1.031 | 26.19 | 0.812 | 20.62 | 0.406 | 10.31 | 0.128 | 3.25 | 1.125 | 28.58 | .961 | 24.41 | .860 | 21.84 |
| 13 | 1.126 | 28.60 | 0.906 | 23.01 | 0.453 | 11.51 | 0.128 | 3.25 | 1.375 | 34.93 | 1.083 | 27.51 | .985 | 25.02 |
| 15 | 1.220 | 30.99 | 0.969 | 24.61 | 0.485 | 12.32 | 0.128 | 3.25 | 1.560 | 39.62 | 1.178 | 29.92 | 1.120 | 28.45 |
| 17 | 1.311 | 33.30 | 1.062 | 26.97 | 0.531 | 13.49 | 0.128 | 3.25 | 1.625 | 41.28 | 1.211 | 30.76 | 1.280 | 32.51 |
| 19 | 1.437 | 36.50 | 1.156 | 29.36 | 0.578 | 14.68 | 0.128 | 3.25 | 1.750 | 44.45 | 1.273 | 32.33 | 1.343 | 34.11 |
| 21 | 1.563 | 39.70 | 1.250 | 31.75 | 0.625 | 15.88 | 0.128 | 3.25 | 2.000 | 50.80 | 1.538 | 39.07 | 1.466 | 37.24 |
| 23 | 1.689 | 42.90 | 1.375 | 34.93 | 0.688 | 17.48 | 0.154 | 3.91 | 2.150 | 54.61 | 1.614 | 41.00 | 1.593 | 40.46 |
| 25 | 1.841 | 46.76 | 1.500 | 38.10 | 0.750 | 19.05 | 0.154 | 3.91 | 2.218 | 56.34 | 1.647 | 41.83 | 1.718 | 43.64 |

| Sym | Material | Finish |
|-----|----------|--|
| MT | Aluminum | Nickel-PTFE |
| ZR | | Zinc-Nickel, Black (Tri-Valent CR) |
| M | | Electroless Nickel |
| NF | | Cad Plate / Olive Drab over Electroless Nickel |
| C | | Anodize / Black |
| UC | | Zinc Cobalt / Black |

| Dash No. | Panel Thickness* ±.030 (.76) | | Shell Size | G ±.06 | | | |
|----------|------------------------------|------|------------|---------------|-------|------------|-------|
| | in | mm | | Jam Nut Mount | | Wall Mount | |
| | | | | in | mm | in | mm |
| T0 | .000 | .00 | 09-19 | N/A | N/A | 1.039 | 26.39 |
| | | | 21-25 | N/A | N/A | 1.094 | 27.79 |
| T1 | .062 | 1.57 | 09-19 | 1.041 | 26.44 | 0.977 | 24.82 |
| | | | 21-25 | 1.126 | 28.60 | 1.032 | 26.21 |
| T2 | .125 | 3.18 | 09-19 | 0.979 | 24.87 | 0.915 | 23.24 |
| | | | 21-25 | 1.064 | 27.03 | 0.970 | 24.64 |

*Jam nut mount is not available with panel thickness T0

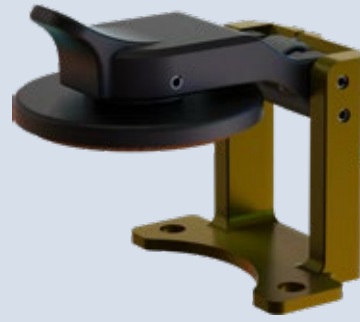
SPRING ACTION
ProSeal™ environmental connector covers
 for Mighty Mouse Series 801 connectors
 Pressure seal, dust and immersion resistant



SPRING ACTION
ProSeal™ environmental connector covers
 for Mighty Mouse Series 801 connectors
 Pressure seal, dust and immersion resistant

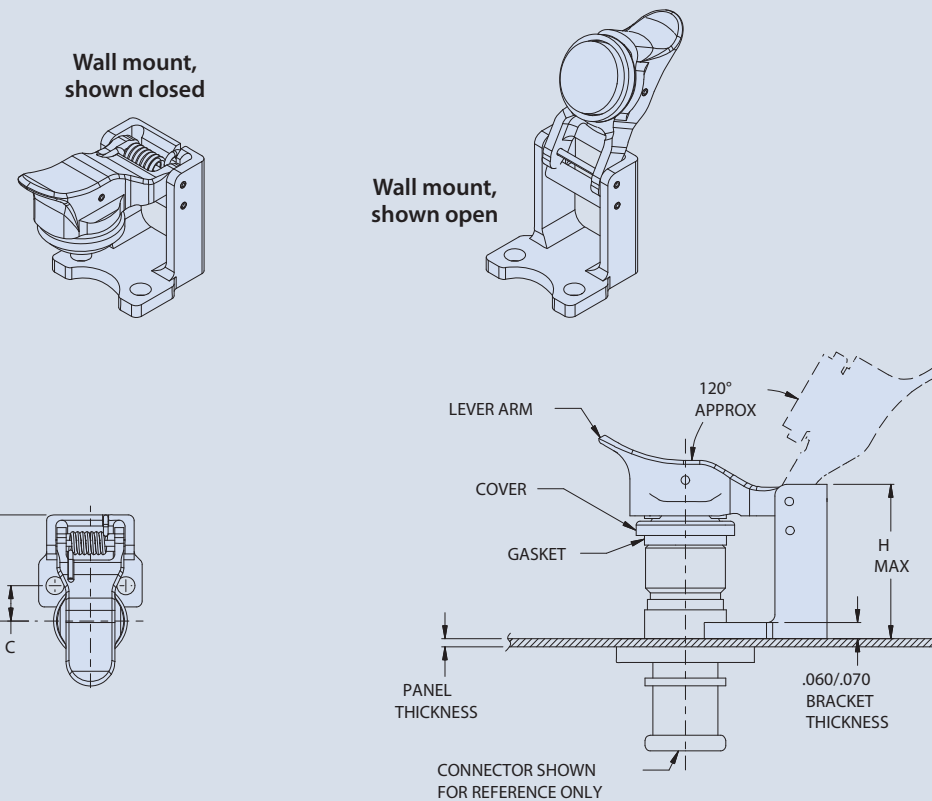


667-497 PROSEAL PROTECTIVE COVER FOR MIGHTY MOUSE SERIES 801 CONNECTORS



| How to Order 667-497 | | | | | |
|----------------------|---|----|----|----|---|
| Sample Part Number | 667-497 | NF | 10 | T1 | W |
| Series | ProSeal protective cover for Series 801 Mighty Mouse connectors | | | | |
| Material / Finish | See Table II | | | | |
| Shell Size | See Table I | | | | |
| Panel Thickness | See Table III | | | | |
| Type of Mounting | W = Wall Mount Receptacle | | | | |

- Pressure seal, dust and immersion resistant
- Self-aligning
- Positive spring-action in closed position. Locks open at approximately 120° from receptacle face.



MATERIAL / FINISH

Cover, Lever Arm, Gimbal - Thermoplastic / Black
 Bracket - see Table II
 Spring / Pin / Rivet - 300 Series SST / Passivate
 Sleeve - Delrin
 Gasket - Silicone (optional)

| Table I: Dimensions | | | | | | | | | | |
|---------------------|------------|-------|-------|-------|-------|-------|---------------|------|---------------|-------|
| Shell Size | Wall Mount | | | | | | | | | |
| | A Dim | | B Dim | | C Dim | | D ±.002 (.05) | | E ±.031 (.79) | |
| | in | mm | in | mm | in | mm | in | mm | in | mm |
| 8 | .712 | 18.08 | .545 | 13.84 | .273 | 6.93 | .094 | 2.39 | .651 | 16.54 |
| 9 | .851 | 21.62 | .607 | 15.42 | .304 | 7.72 | .128 | 3.25 | .724 | 18.39 |
| 10 | .890 | 22.61 | .670 | 17.02 | .335 | 8.51 | .128 | 3.25 | .758 | 19.25 |
| 11 | .935 | 23.75 | .715 | 18.16 | .358 | 9.09 | .128 | 3.25 | .781 | 19.84 |
| 13 | 1.030 | 26.16 | .812 | 20.62 | .406 | 10.31 | .128 | 3.25 | .850 | 21.59 |
| 16 | 1.219 | 30.96 | .981 | 24.92 | .491 | 12.47 | .128 | 3.25 | 1.012 | 25.70 |
| 17 | 1.280 | 32.51 | 1.060 | 26.92 | .530 | 13.46 | .128 | 3.25 | 1.043 | 26.49 |
| 19 | 1.432 | 36.37 | 1.191 | 30.25 | .596 | 15.14 | .128 | 3.25 | 1.043 | 26.49 |
| 21 | 1.565 | 39.75 | 1.322 | 33.58 | .661 | 16.79 | .128 | 3.25 | 1.151 | 29.24 |

Consult factory for additional shell sizes

| Table II: Material and Finish | | |
|-------------------------------|----------|--|
| Sym | Material | Finish |
| MT | Aluminum | Nickel-PTFE |
| ZR | | Zinc-Nickel, Black (Tri-Valent CR) |
| M | | Electroless Nickel |
| NF | | Cad Plate / Olive Drab over Electroless Nickel |
| C | | Anodize / Black |
| UC | | Zinc Cobalt / Black |

| Table III: Panel Thickness | | | | | |
|----------------------------|------------------|------|------------|-------|-------|
| Dash No. | Panel Thickness* | | Shell Size | H Max | |
| | in | mm | | in | mm |
| | T0 | .000 | .00 | 5-8 | .593 |
| 9-21 | | | | .692 | 17.58 |
| T1 | .062 | 1.57 | 5-8 | .531 | 13.49 |
| | | | 9-21 | .630 | 16.00 |

*Cover fits nominally onto panel with .062" (1.57mm) thickness, but will also work for panels as thin as .031" (.79mm)

SPRING ACTION
ProSeal™ environmental connector covers

for Mighty Mouse Series 801 connectors
Threaded closure seal, full environmental

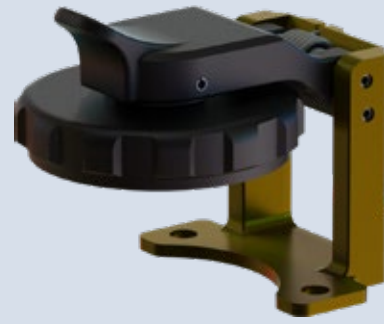


SPRING ACTION
ProSeal™ environmental connector covers

for Mighty Mouse Series 801 connectors
Threaded closure seal, full environmental

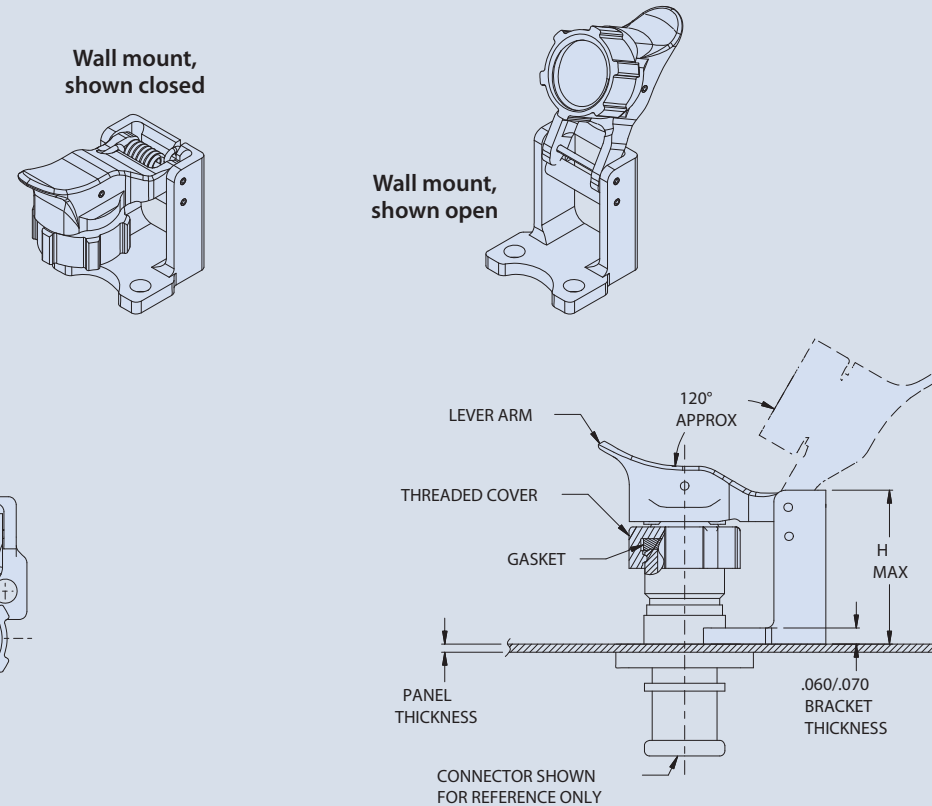


667-509 PROSEAL PROTECTIVE COVER FOR MIGHTY MOUSE SERIES 801 CONNECTORS



| How to Order 667-509 | | | | | |
|----------------------|---|----|----|----|---|
| Sample Part Number | 667-509 | NF | 10 | T1 | W |
| Series | ProSeal protective cover for Series 801 Mighty Mouse connectors | | | | |
| Material / Finish | See Table II | | | | |
| Shell Size | See Table I | | | | |
| Panel Thickness | See Table III | | | | |
| Type of Mounting | W = Wall Mount Receptacle | | | | |

- Threaded closure
- Full environmental protection
- Self-aligning
- Positive spring-action in closed position. Locks open at approximately 120° from receptacle face.



MATERIAL / FINISH

Cover, Lever Arm, Gimbal - Thermoplastic / Black
Bracket - see Table II
Spring / Pin / Rivet - 300 Series SST / Passivate
Sleeve - Delrin
Gasket - Silicone (optional)

| Table I: Dimensions | | | | | | | | | | | | |
|---------------------|------------|-------|-------|-------|-------|-------|---------------|------|---------------|-------|-----------|-------|
| Shell Size | Wall Mount | | | | | | | | | | | |
| | A Dim | | B Dim | | C Dim | | D ±.002 (.05) | | E ±.031 (.79) | | J Dia max | |
| | in | mm | in | mm | in | mm | in | mm | in | mm | in | mm |
| 8 | .712 | 18.08 | .545 | 13.84 | .273 | 6.93 | .094 | 2.39 | .651 | 16.54 | .651 | 16.54 |
| 9 | .851 | 21.62 | .607 | 15.42 | .304 | 7.72 | .128 | 3.25 | .724 | 18.39 | .710 | 18.03 |
| 10 | .890 | 22.61 | .670 | 17.02 | .335 | 8.51 | .128 | 3.25 | .758 | 19.25 | .776 | 19.71 |
| 11 | .935 | 23.75 | .715 | 18.16 | .358 | 9.09 | .128 | 3.25 | .781 | 19.84 | .842 | 21.39 |
| 13 | 1.030 | 26.16 | .812 | 20.62 | .406 | 10.31 | .128 | 3.25 | .850 | 21.59 | .968 | 24.59 |
| 16 | 1.219 | 30.96 | .981 | 24.92 | .491 | 12.47 | .128 | 3.25 | 1.012 | 25.70 | 1.158 | 29.41 |
| 17 | 1.280 | 32.51 | 1.060 | 26.92 | .530 | 13.46 | .128 | 3.25 | 1.043 | 26.49 | 1.217 | 30.91 |
| 19 | 1.432 | 36.37 | 1.191 | 30.25 | .596 | 15.14 | .128 | 3.25 | 1.043 | 26.49 | 1.344 | 34.14 |
| 21 | 1.565 | 39.75 | 1.322 | 33.58 | .661 | 16.79 | .128 | 3.25 | 1.151 | 29.24 | 1.469 | 37.31 |

Consult factory for additional shell sizes

| Table II: Material and Finish | | |
|-------------------------------|----------|--|
| Sym | Material | Finish |
| MT | Aluminum | Nickel-PTFE |
| ZR | | Zinc-Nickel, Black (Tri-Valent CR) |
| M | | Electroless Nickel |
| NF | | Cad Plate / Olive Drab over Electroless Nickel |
| C | | Anodize / Black |
| UC | | Zinc Cobalt / Black |

| Table III: Panel Thickness | | | | | |
|----------------------------|------------------|------|------------|-------|-------|
| Dash No. | Panel Thickness* | | Shell Size | H Max | |
| | in | mm | | in | mm |
| T0 | .000 | .00 | 5-8 | .593 | 15.06 |
| | | | 9-21 | .692 | 17.58 |
| T1 | .062 | 1.57 | 5-8 | .531 | 13.49 |
| | | | 9-21 | .630 | 16.00 |

*Cover fits nominally onto panel with .062" (1.57mm) thickness, but will also work for panels as thin as .031" (.79mm)

SPRING ACTION
ProSeal™ environmental connector covers

for Mighty Mouse Series 804 Jam Nut connectors
Pressure seal, dust and immersion resistant



SPRING ACTION
ProSeal™ environmental connector covers

for Mighty Mouse Series 804 Jam Nut connectors
Pressure seal, dust and immersion resistant



667-387 PROSEAL PROTECTIVE COVER FOR MIGHTY MOUSE SERIES 804 JAM NUT CONNECTORS

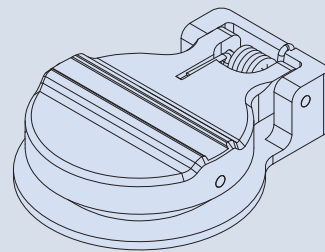


| How to Order 667-387 | | | | |
|----------------------|---|----|----|----|
| Sample Part Number | 667-387 | NF | 09 | -2 |
| Series | ProSeal protective cover for Series 804 Mighty Mouse Jam Nut connectors | | | |
| Material / Finish | See Table II | | | |
| Shell Size | See Table I | | | |
| Panel Thickness | 1 = .063" ±.03 F=.43 2 = .125" ±.03 F=.36 | | | |

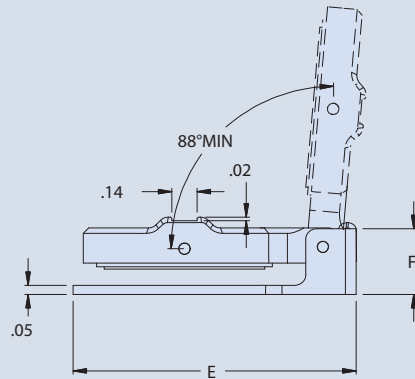
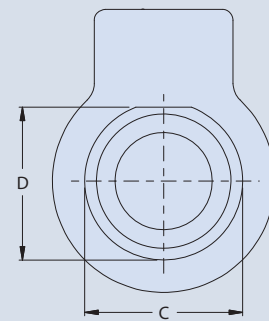
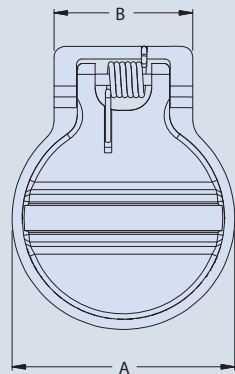
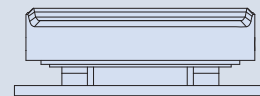
| Shell Size | A Dia | | B Dim | | C Dia | | D Flat | | E Dim | |
|------------|-------|-------|-------|-------|-------|-------|-------------|-------------|-------|-------|
| | in | mm | in | mm | in | mm | in | mm | in | mm |
| 06 | .86 | 21.84 | .70 | 17.78 | .510 | 12.95 | .479/.475 | 12.17/12.07 | 1.20 | 30.48 |
| 07 | .87 | 22.10 | .77 | 19.56 | .635 | 16.13 | .606/.601 | 15.39/15.27 | 1.29 | 32.77 |
| 08 | .87 | 22.10 | .77 | 19.56 | .635 | 16.13 | .606/.602 | 15.39/15.29 | 1.29 | 32.77 |
| 09 | 1.05 | 26.67 | .77 | 19.56 | .695 | 17.65 | .667/.663 | 16.94/16.84 | 1.35 | 34.29 |
| 10 | 1.11 | 28.19 | .77 | 19.56 | .760 | 19.30 | .734/.729 | 18.64/18.52 | 1.42 | 36.07 |
| 12 | 1.24 | 31.50 | .77 | 19.56 | .885 | 22.48 | .855/.851 | 21.72/21.62 | 1.57 | 39.88 |
| 14 | 1.36 | 34.54 | .89 | 22.61 | 1.010 | 25.65 | .980/.976 | 24.89/24.79 | 1.70 | 43.18 |
| 15 | 1.42 | 36.07 | .89 | 22.61 | 1.070 | 27.18 | 1.041/1.037 | 26.44/26.34 | 1.74 | 44.20 |

Consult factory for additional shell sizes

- Pressure seal, dust and immersion resistant
- Self-aligning
- Positive spring-action in closed position. Opens to 88°, non-locking.



Jam nut mount, shown closed



| Sym | Material | Finish |
|-----|----------------|--|
| M | Aluminum Alloy | Electroless Nickel |
| NF | | Cad Plate / Olive Drab over Electroless Nickel |
| C | | Anodize / Black |
| ZN | | Zinc-Nickel / O.D. over Electroless Nickel |
| ZR | | Zinc-Nickel / Black over Electroless Nickel |

MATERIAL / FINISH

Cover, Lever Arm, Bracket-Aluminum Alloy/see Table II
Shaft / Sping - CRES / Passivate
Sleeve - Delrin
Gasket - Sponge Silicone

SPRING ACTION
ProSeal™ environmental connector covers

for Mighty Mouse Series 804 Wall Mount connectors
Pressure seal, dust and immersion resistant

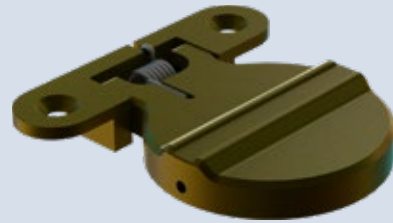


SPRING ACTION
ProSeal™ environmental connector covers

for Mighty Mouse Series 804 Wall Mount connectors
Pressure seal, dust and immersion resistant

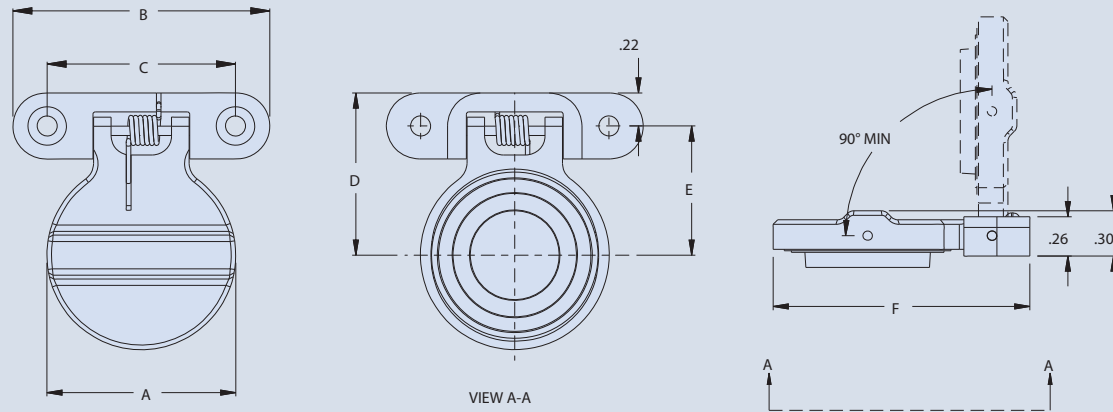
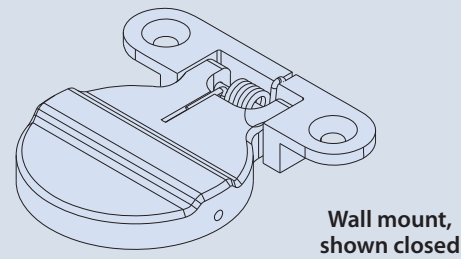


667-392 PROSEAL PROTECTIVE COVER FOR MIGHTY MOUSE SERIES 804 WALL MOUNT CONNECTORS



| How to Order 667-392 | | | |
|----------------------|--|----|----|
| Sample Part Number | 667-392 | NF | 09 |
| Series | ProSeal protective cover for Series 804 Mighty Mouse Wall Mount connectors | | |
| Material / Finish | See Table II | | |
| Shell Size | See Table I | | |

- Pressure seal, dust and immersion resistant
- Self-aligning
- Positive spring-action in closed position. Opens to 90°, non-locking.



MATERIAL / FINISH

Cover, Lever Arm, Bracket - Aluminum Alloy/see Table II
Shaft / Spring - CRES / Passivate
Sleeve - Delrin
Gasket - Silicone

| Shell Size | A Dia | | B Dim | | C ±.005 | | D Dim | | E ±.005 | | F Dim | |
|------------|-------|-------|-------|-------|---------|-------|-------|-------|---------|-------|-------|-------|
| | in | mm | in | mm | in | mm | in | mm | in | mm | in | mm |
| 06 | .75 | 19.05 | 1.51 | 38.35 | 1.055 | 26.80 | .84 | 21.34 | .615 | 15.62 | 1.17 | 29.72 |
| 07 | .87 | 22.10 | 1.58 | 40.13 | 1.125 | 28.58 | .87 | 22.10 | .640 | 16.26 | 1.25 | 31.75 |
| 08 | .87 | 22.10 | 1.58 | 40.13 | 1.125 | 28.58 | .90 | 22.86 | .673 | 17.09 | 1.32 | 33.53 |
| 09 | .94 | 23.88 | 1.58 | 40.13 | 1.125 | 28.58 | .90 | 22.86 | .673 | 17.09 | 1.32 | 33.53 |
| 10 | 1.00 | 25.40 | 1.58 | 40.13 | 1.125 | 28.58 | .94 | 23.88 | .712 | 18.08 | 1.39 | 35.31 |
| 12 | 1.12 | 28.45 | 1.58 | 40.13 | 1.125 | 28.58 | 1.03 | 26.16 | .800 | 20.32 | 1.53 | 38.86 |
| 14 | 1.25 | 31.75 | 1.70 | 43.18 | 1.245 | 31.62 | 1.08 | 27.43 | .855 | 21.72 | 1.69 | 42.93 |
| 15 | 1.31 | 33.27 | 1.70 | 43.18 | 1.245 | 31.62 | 1.10 | 27.94 | .875 | 22.23 | 1.74 | 44.20 |

Consult factory for additional shell sizes

| Table II: Material and Finish | | |
|-------------------------------|----------------|--|
| Sym | Material | Finish |
| M | Aluminum Alloy | Electroless Nickel |
| NF | | Cad Plate / Olive Drab over Electroless Nickel |
| C | | Anodize / Black |
| ZN | | Zinc-Nickel / O.D. over Electroless Nickel |
| ZR | | Zinc-Nickel / Black over Electroless Nickel |

Mighty Mouse 804

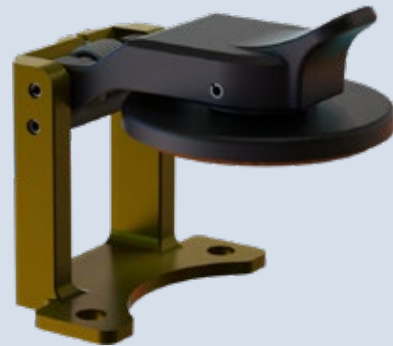
SPRING ACTION
ProSeal™ environmental connector covers
 for Mighty Mouse Series 805 connectors
 Pressure seal, dust and immersion resistant



SPRING ACTION
ProSeal™ environmental connector covers
 for Mighty Mouse Series 805 connectors
 Pressure seal, dust and immersion resistant

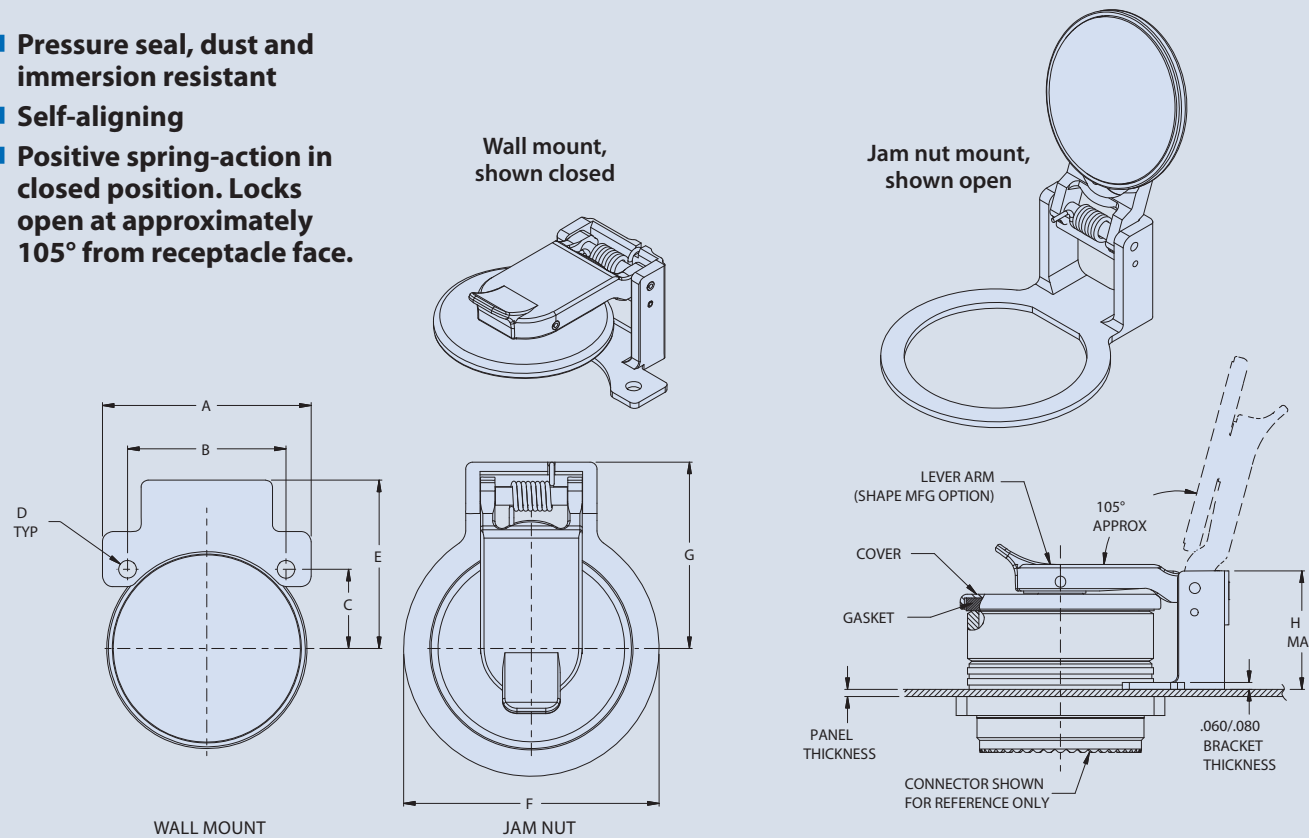


667-424 PROSEAL PROTECTIVE COVER FOR MIGHTY MOUSE SERIES 805 CONNECTORS



| How to Order 667-424 | | | | | |
|----------------------|---|----|----|----|---|
| Sample Part Number | 667-424 | NF | 13 | T1 | J |
| Series | ProSeal protective cover for Series 805 Mighty Mouse connectors | | | | |
| Material / Finish | See Table II | | | | |
| Shell Size | See Table I | | | | |
| Panel Thickness | See Table III | | | | |
| Type of Mounting | J = Jam Nut Mount Receptacle W = Wall Mount Receptacle | | | | |

- Pressure seal, dust and immersion resistant
- Self-aligning
- Positive spring-action in closed position. Locks open at approximately 105° from receptacle face.



MATERIAL / FINISH

Cover, Lever Arm, Gimbal-Thermoplastic / Black
 Bracket - see Table II
 Spring / Pin / Rivet - 300 Series SST / Passivate
 Sleeve - Delrin
 Gasket - Silicone

| Shell Size | Table I: Dimensions | | | | | | | | | | | | | |
|------------|---------------------|-------|-------|-------|-------|-------|---------------|------|---------------|-------|---------------|-------|---------------|-------|
| | Wall Mount | | | | | | | | Jam Nut Mount | | | | | |
| | A Dim | | B Dim | | C Dim | | D ±.002 (.05) | | E ±.031 (.79) | | F ±.031 (.79) | | G ±.031 (.79) | |
| | in | mm | in | mm | in | mm | in | mm | in | mm | in | mm | in | mm |
| 08 | .850 | 21.59 | .660 | 16.76 | .330 | 8.38 | .094 | 2.39 | .675 | 17.15 | .768 | 19.51 | .721 | 18.31 |
| 09 | .913 | 23.19 | .723 | 18.36 | .362 | 9.19 | .094 | 2.39 | .724 | 18.39 | .906 | 23.01 | .790 | 20.07 |
| 10 | .975 | 24.77 | .785 | 19.94 | .393 | 9.98 | .094 | 2.39 | .758 | 19.25 | .906 | 23.01 | .790 | 20.07 |
| 11 | 1.039 | 26.39 | .848 | 21.54 | .424 | 10.77 | .094 | 2.39 | .780 | 19.81 | .977 | 24.82 | .825 | 20.96 |
| 12 | 1.099 | 27.91 | .909 | 23.09 | .455 | 11.56 | .094 | 2.39 | .824 | 20.93 | 1.046 | 26.57 | .860 | 21.84 |
| 13 | 1.163 | 29.54 | .973 | 24.71 | .487 | 12.37 | .094 | 2.39 | .851 | 21.62 | 1.116 | 28.35 | .895 | 22.73 |
| 15 | 1.288 | 32.72 | 1.058 | 26.87 | .529 | 13.44 | .128 | 3.25 | .967 | 24.56 | 1.256 | 31.90 | .982 | 24.94 |
| 18 | 1.475 | 37.47 | 1.255 | 31.88 | .628 | 15.95 | .128 | 3.25 | 1.062 | 26.97 | 1.465 | 37.21 | 1.087 | 27.61 |
| 19 | 1.537 | 39.04 | 1.327 | 33.71 | .664 | 16.87 | .128 | 3.25 | 1.070 | 27.18 | 1.535 | 38.99 | 1.122 | 28.50 |
| 21 | 1.663 | 42.24 | 1.452 | 36.88 | .726 | 18.44 | .128 | 3.25 | 1.148 | 29.16 | 1.674 | 42.52 | 1.194 | 30.33 |
| 23 | 1.787 | 45.39 | 1.570 | 39.88 | .785 | 19.94 | .128 | 3.25 | 1.340 | 34.04 | 1.814 | 46.08 | 1.394 | 35.41 |

| Table II: Material and Finish | | |
|-------------------------------|----------|--|
| Sym | Material | Finish |
| MT | Aluminum | Nickel-PTFE |
| ZR | | Zinc-Nickel, Black (Tri-Valent CR) |
| M | | Electroless Nickel |
| NF | | Cad Plate / Olive Drab over Electroless Nickel |
| C | | Anodize / Black |
| UC | | Zinc Cobalt / Black |

| Dash No. | Table III: Panel Thickness | | | | | |
|----------|------------------------------|------|---------|-------|------------|-------|
| | Panel Thickness* ±.030 (.76) | | H max | | | |
| | in | mm | Jam Nut | | Wall Mount | |
| | in | mm | in | mm | in | mm |
| T0 | .000 | .00 | N/A | N/A | .937 | 23.80 |
| T1 | .062 | 1.57 | .993 | 25.22 | .875 | 22.23 |

*Cover fits nominally onto panel with .062" (1.57mm) thickness, but will also work for panels as thin as .031" (.79mm)

SPRING ACTION
ProSeal™ environmental connector covers



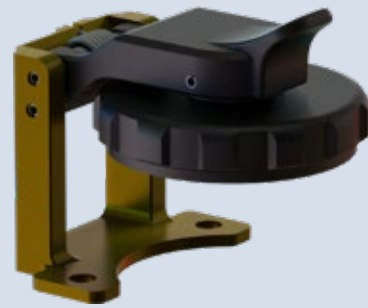
for Mighty Mouse Series 805 connectors
Threaded closure seal, full environmental

SPRING ACTION
ProSeal™ environmental connector covers



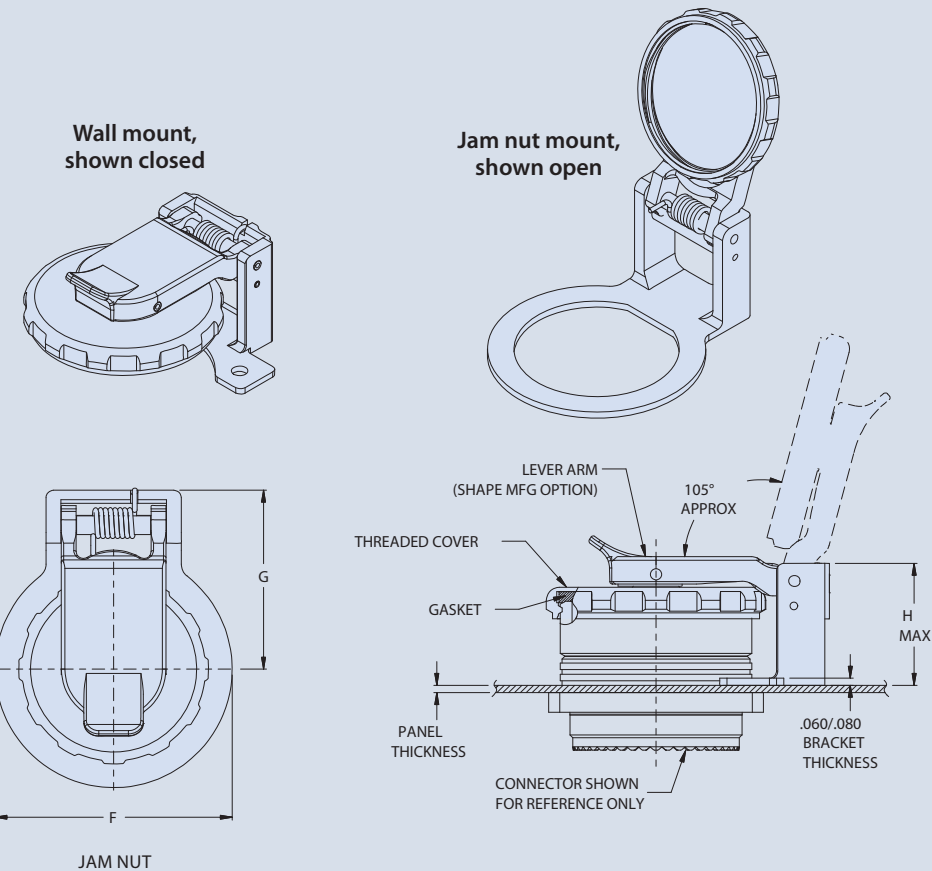
for Mighty Mouse Series 805 connectors
Threaded closure seal, full environmental

667-462 PROSEAL PROTECTIVE COVER FOR MIGHTY MOUSE SERIES 805 CONNECTORS



| How to Order 667-462 | | | | | | |
|----------------------|---|----|----|----|---|--|
| Sample Part Number | 667-462 | NF | 13 | T1 | J | |
| Series | ProSeal protective cover for Series 805 Mighty Mouse connectors | | | | | |
| Material / Finish | See Table II | | | | | |
| Shell Size | See Table I | | | | | |
| Panel Thickness | See Table III | | | | | |
| Type of Mounting | J = Jam Nut Mount Receptacle W = Wall Mount Receptacle | | | | | |

- Threaded closure
- Full environmental protection
- Self-aligning
- Positive spring-action in closed position. Locks open at approximately 105° from receptacle face.



MATERIAL / FINISH

Cover, Lever Arm, Gimbal-Thermoplastic / Black
Bracket - see Table II
Spring / Pin / Rivet - 300 Series SST / Passivate
Sleeve - Delrin
Gasket - Silicone

| Shell Size | Table I: Dimensions | | | | | | | | | | | | | | | |
|------------|---------------------|-------|-------|-------|-------|-------|---------------|------|---------------|-------|---------------|-------|---------------|-------|-----------|-------|
| | Wall Mount | | | | | | | | Jam Nut Mount | | | | | | | |
| | A Dim | | B Dim | | C Dim | | D ±.002 (.05) | | E ±.031 (.79) | | F ±.031 (.79) | | G ±.031 (.79) | | J Dia max | |
| | in | mm | in | mm | in | mm | in | mm | in | mm | in | mm | in | mm | in | mm |
| 08 | .850 | 21.59 | .660 | 16.76 | .330 | 8.38 | .094 | 2.39 | .675 | 17.15 | .768 | 19.51 | .721 | 18.31 | .720 | 18.29 |
| 09 | .913 | 23.19 | .723 | 18.36 | .362 | 9.19 | .094 | 2.39 | .724 | 18.39 | .906 | 23.01 | .790 | 20.07 | .782 | 19.86 |
| 10 | .975 | 24.77 | .785 | 19.94 | .393 | 9.98 | .094 | 2.39 | .758 | 19.25 | .906 | 23.01 | .790 | 20.07 | .845 | 21.46 |
| 11 | 1.039 | 26.39 | .848 | 21.54 | .424 | 10.77 | .094 | 2.39 | .780 | 19.81 | .977 | 24.82 | .825 | 20.96 | .908 | 23.06 |
| 12 | 1.099 | 27.91 | .909 | 23.09 | .455 | 11.56 | .094 | 2.39 | .824 | 20.93 | 1.046 | 26.57 | .860 | 21.84 | .970 | 24.64 |
| 13 | 1.163 | 29.54 | .973 | 24.71 | .487 | 12.37 | .094 | 2.39 | .851 | 21.62 | 1.116 | 28.35 | .895 | 22.73 | 1.032 | 26.21 |
| 15 | 1.288 | 32.72 | 1.058 | 26.87 | .529 | 13.44 | .128 | 3.25 | .967 | 24.56 | 1.256 | 31.90 | .982 | 24.94 | 1.157 | 29.39 |
| 18 | 1.475 | 37.47 | 1.255 | 31.88 | .628 | 15.95 | .128 | 3.25 | 1.062 | 26.97 | 1.465 | 37.21 | 1.087 | 27.61 | 1.345 | 34.16 |
| 19 | 1.537 | 39.04 | 1.327 | 33.71 | .664 | 16.87 | .128 | 3.25 | 1.070 | 27.18 | 1.535 | 38.99 | 1.122 | 28.50 | 1.408 | 35.76 |
| 21 | 1.663 | 42.24 | 1.452 | 36.88 | .726 | 18.44 | .128 | 3.25 | 1.148 | 29.16 | 1.674 | 42.52 | 1.194 | 30.33 | 1.532 | 38.91 |
| 23 | 1.787 | 45.39 | 1.570 | 39.88 | .785 | 19.94 | .128 | 3.25 | 1.340 | 34.04 | 1.814 | 46.08 | 1.394 | 35.41 | 1.657 | 42.09 |

| Table II: Material and Finish | | |
|-------------------------------|----------|--|
| Sym | Material | Finish |
| MT | Aluminum | Nickel-PTFE |
| ZR | | Zinc-Nickel, Black (Tri-Valent CR) |
| M | | Electroless Nickel |
| NF | | Cad Plate / Olive Drab over Electroless Nickel |
| C | | Anodize / Black |
| UC | | Zinc Cobalt / Black |

| Dash No. | Table III: Panel Thickness | | | | | |
|----------|------------------------------|------|---------|-------|------------|-------|
| | Panel Thickness* ±.030 (.76) | | H max | | | |
| | in | mm | Jam Nut | | Wall Mount | |
| | in | mm | in | mm | in | mm |
| T0 | .000 | .00 | N/A | N/A | .937 | 23.80 |
| T1 | .062 | 1.57 | .993 | 25.22 | .875 | 22.23 |

*Cover fits nominally onto panel with .062" (1.57mm) thickness, but will also work for panels as thin as .031" (.79mm)

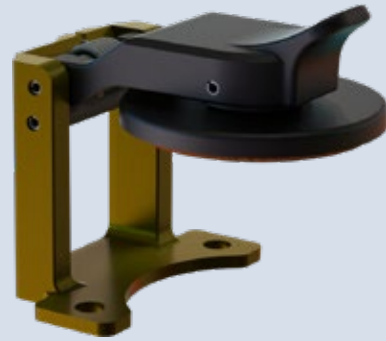
SPRING ACTION
ProSeal™ environmental connector covers
 for Series 806 Mil-Aero connectors
 Pressure seal, dust and immersion resistant



SPRING ACTION
ProSeal™ environmental connector covers
 for Series 806 Mil-Aero connectors
 Pressure seal, dust and immersion resistant



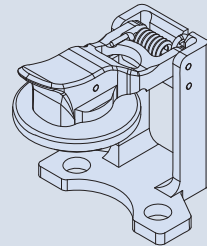
667-511 PROSEAL PROTECTIVE COVER FOR SERIES 806 MIL-AERO CONNECTORS



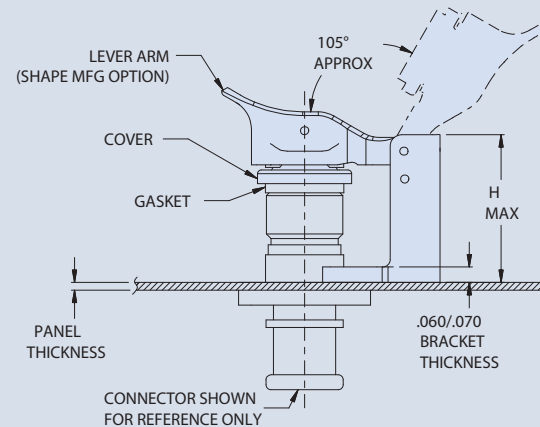
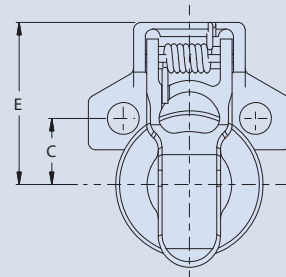
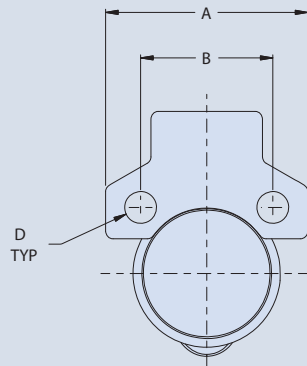
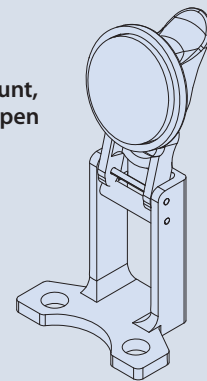
| How to Order 667-511 | | | | | |
|---------------------------|---|-----------|----------|-----------|----------|
| Sample Part Number | 667-511 | NF | 8 | T1 | W |
| Series | ProSeal protective cover for Series 806 Mil-Aero connectors | | | | |
| Material / Finish | See Table II | | | | |
| Shell Size | See Table I | | | | |
| Panel Thickness | See Table III | | | | |
| Type of Mounting | W = Wall Mount Receptacle | | | | |

- Pressure seal, dust and immersion resistant
- Self-aligning
- Positive spring-action in closed position. Locks open at approximately 105° from receptacle face.

Wall mount, shown closed



Wall mount, shown open



MATERIAL / FINISH

Cover, Lever Arm, Gimbal-Thermoplastic / Black
 Bracket - see Table II
 Spring / Pin / Rivet - 300 Series SST / Passivate
 Sleeve - Delrin
 Gasket - Silicone

| Table I: Dimensions | | | | | | | | | | |
|---------------------|------------|-------|-------|-------|-------|-------|---------------|------|---------------|-------|
| Shell Size | Wall Mount | | | | | | | | | |
| | A Dim | | B Dim | | C Dim | | D ±.002 (.05) | | E ±.031 (.79) | |
| | in | mm | in | mm | in | mm | in | mm | in | mm |
| 8 | .842 | 21.39 | .531 | 13.49 | .266 | 6.76 | .128 | 3.25 | .651 | 16.54 |
| 9 | .905 | 22.99 | .594 | 15.09 | .297 | 7.54 | .128 | 3.25 | .724 | 18.39 |
| 10 | .933 | 23.70 | .625 | 15.88 | .313 | 7.95 | .128 | 3.25 | .758 | 19.25 |
| 11 | .980 | 24.89 | .670 | 17.02 | .335 | 8.51 | .128 | 3.25 | .781 | 19.84 |
| 12 | 1.058 | 26.87 | .765 | 19.43 | .383 | 9.73 | .128 | 3.25 | .850 | 21.59 |
| 14 | 1.156 | 29.36 | .859 | 21.82 | .430 | 10.92 | .128 | 3.25 | .935 | 23.75 |
| 16 | 1.250 | 31.75 | .938 | 23.83 | .469 | 11.91 | .128 | 3.25 | 1.003 | 25.48 |
| 18 | 1.341 | 34.06 | 1.016 | 25.81 | .508 | 12.90 | .128 | 3.25 | 1.082 | 27.48 |
| 20 | 1.467 | 37.26 | 1.109 | 28.17 | .555 | 14.10 | .154 | 3.91 | 1.118 | 28.40 |
| 22 | 1.593 | 40.46 | 1.203 | 30.56 | .602 | 15.29 | .154 | 3.91 | 1.334 | 33.88 |
| 24 | 1.719 | 43.66 | 1.312 | 33.32 | .656 | 16.66 | .154 | 3.91 | 1.398 | 35.51 |

| Table II: Material and Finish | | |
|-------------------------------|----------|--|
| Sym | Material | Finish |
| MT | Aluminum | Nickel-PTFE |
| ZR | | Zinc-Nickel, Black (Tri-Valent CR) |
| M | | Electroless Nickel |
| NF | | Cad Plate / Olive Drab over Electroless Nickel |
| C | | Anodize / Black |
| UC | | Zinc Cobalt / Black |

| Table III: Panel Thickness | | | | | |
|----------------------------|------------------------------|------|------------|------------|-------|
| Dash No. | Panel Thickness* ±.030 (.76) | | Shell Size | H Max | |
| | in | mm | | Wall Mount | |
| T0 | .000 | .00 | 8 - 12 | .940 | 23.88 |
| | | | 14 - 24 | .875 | 22.23 |
| T1 | .062 | 1.57 | 8 - 12 | .878 | 22.30 |
| | | | 14 - 24 | .813 | 20.64 |

*Cover fits nominally onto panel with .062" (1.57mm) thickness, but will also work for panels as thin as .031" (.79mm)

806 Mil-Aero

SPRING ACTION
ProSeal™ environmental connector covers

for Series 806 Mil-Aero connectors
Threaded closure seal, full environmental

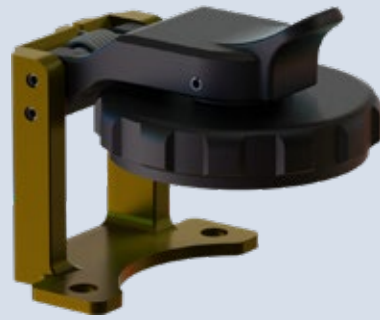


SPRING ACTION
ProSeal™ environmental connector covers

for Series 806 Mil-Aero connectors
Threaded closure seal, full environmental



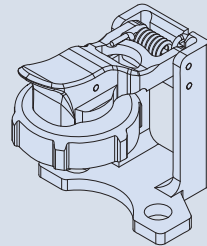
667-512 PROSEAL PROTECTIVE COVER FOR SERIES 806 MIL-AERO CONNECTORS



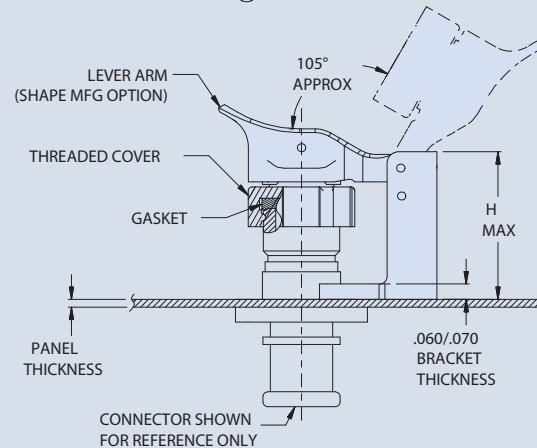
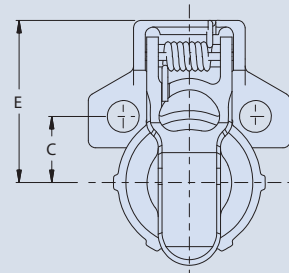
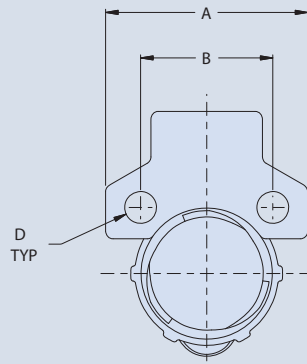
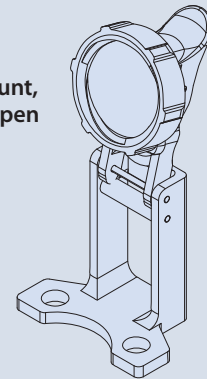
| How to Order 667-512 | | | | | | |
|----------------------|---|----|---|----|---|--|
| Sample Part Number | 667-512 | NF | 8 | T1 | W | |
| Series | ProSeal protective cover for Series 806 Mil-Aero connectors | | | | | |
| Material / Finish | See Table II | | | | | |
| Shell Size | See Table I | | | | | |
| Panel Thickness | See Table III | | | | | |
| Type of Mounting | W = Wall Mount Receptacle | | | | | |

- Threaded closure
- Full environmental protection
- Self-aligning
- Positive spring-action in closed position. Locks open at approximately 105° from receptacle face.

Wall mount, shown closed



Wall mount, shown open



MATERIAL / FINISH

Cover, Lever Arm, Gimbal-Thermoplastic / Black
Bracket - see Table II
Spring / Pin / Rivet - 300 Series SST / Passivate
Sleeve - Delrin
Gasket - Silicone

| Table I: Dimensions | | | | | | | | | | |
|---------------------|------------|-------|-------|-------|-------|-------|---------------|------|---------------|-------|
| Shell Size | Wall Mount | | | | | | | | | |
| | A Dim | | B Dim | | C Dim | | D ±.002 (.05) | | E ±.031 (.79) | |
| | in | mm | in | mm | in | mm | in | mm | in | mm |
| 8 | .842 | 21.39 | .531 | 13.49 | .266 | 6.76 | .128 | 3.25 | .651 | 16.54 |
| 9 | .905 | 22.99 | .594 | 15.09 | .297 | 7.54 | .128 | 3.25 | .724 | 18.39 |
| 10 | .933 | 23.70 | .625 | 15.88 | .313 | 7.95 | .128 | 3.25 | .758 | 19.25 |
| 11 | .980 | 24.89 | .670 | 17.02 | .335 | 8.51 | .128 | 3.25 | .781 | 19.84 |
| 12 | 1.058 | 26.87 | .765 | 19.43 | .383 | 9.73 | .128 | 3.25 | .850 | 21.59 |
| 14 | 1.156 | 29.36 | .859 | 21.82 | .430 | 10.92 | .128 | 3.25 | .935 | 23.75 |
| 16 | 1.250 | 31.75 | .938 | 23.83 | .469 | 11.91 | .128 | 3.25 | 1.003 | 25.48 |
| 18 | 1.341 | 34.06 | 1.016 | 25.81 | .508 | 12.90 | .128 | 3.25 | 1.082 | 27.48 |
| 20 | 1.467 | 37.26 | 1.109 | 28.17 | .555 | 14.10 | .154 | 3.91 | 1.118 | 28.40 |
| 22 | 1.593 | 40.46 | 1.203 | 30.56 | .602 | 15.29 | .154 | 3.91 | 1.334 | 33.88 |
| 24 | 1.719 | 43.66 | 1.312 | 33.32 | .656 | 16.66 | .154 | 3.91 | 1.398 | 35.51 |

| Table II: Material and Finish | | |
|-------------------------------|----------|--|
| Sym | Material | Finish |
| MT | Aluminum | Nickel-PTFE |
| ZR | | Zinc-Nickel, Black (Tri-Valent CR) |
| M | | Electroless Nickel |
| NF | | Cad Plate / Olive Drab over Electroless Nickel |
| C | | Anodize / Black |
| UC | | Zinc Cobalt / Black |

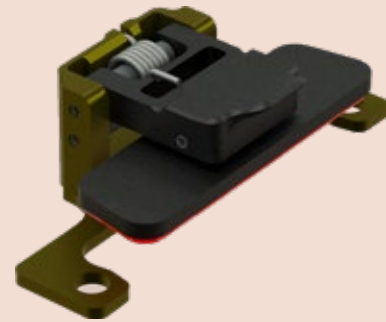
| Table III: Panel Thickness | | | | | |
|----------------------------|------------------------------|------|------------|------------|-------|
| Dash No. | Panel Thickness* ±.030 (.76) | | Shell Size | H Max | |
| | in | mm | | Wall Mount | |
| T0 | .000 | .00 | 8 - 12 | .940 | 23.88 |
| | | | 14 - 24 | .875 | 22.23 |
| T1 | .062 | 1.57 | 8 - 12 | .878 | 22.30 |
| | | | 14 - 24 | .813 | 20.64 |

*Cover fits nominally onto panel with .062" (1.57mm) thickness, but will also work for panels as thin as .031" (.79mm)

806 Mil-Aero

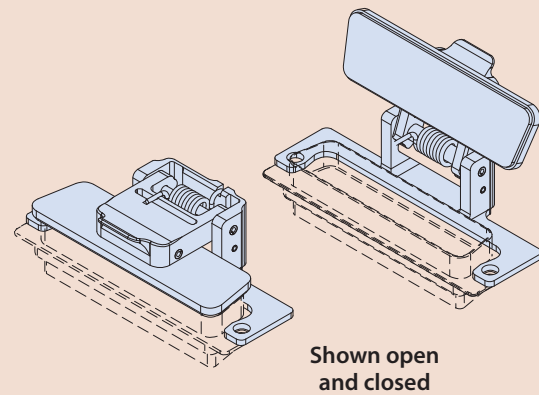
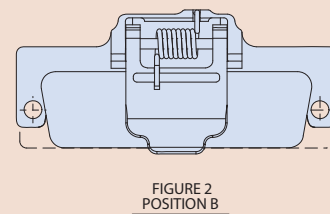
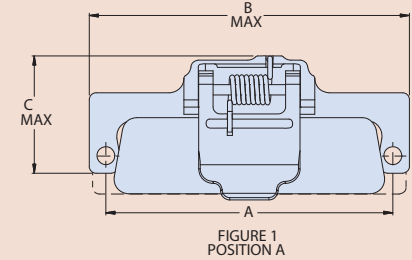


667-466 PROSEAL PROTECTIVE COVER FOR MIL-DTL-24308 D-SUB CONNECTORS

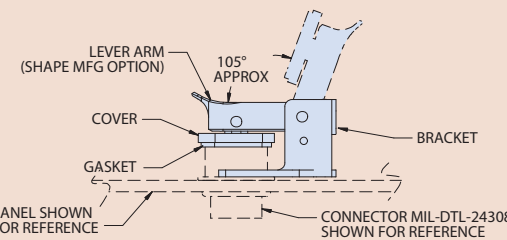
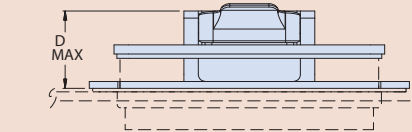


| How to Order 667-466 | | | | | | |
|----------------------|---|----|---|----|---|---|
| Sample Part Number | 667-466 | NF | 1 | T0 | A | K |
| Series | ProSeal protective cover for MIL-DTL-24308 connectors | | | | | |
| Material / Finish | See Table II | | | | | |
| Shell Size | See Table I | | | | | |
| Panel Thickness | See Table III | | | | | |
| Connector Position | A = Figure 1 B = Figure 2 | | | | | |
| Mounting Kit | K = supplied with Kit Omit for none | | | | | |

- Pressure seal, dust and spray resistant
- Self-aligning
- Positive spring-action in closed position. Locks open at approximately 105° from receptacle face.



Shown open and closed



MATERIAL / FINISH

Cover, Lever Arm - Thermoplastic / black
Bracket - see Table II
Springs / Pins - 300 Series SST / Passivate
Sleeves - Delrin
Gasket - Silicone
Supplied with one kit of 559-001-049 with 2 jackpost mounting sets

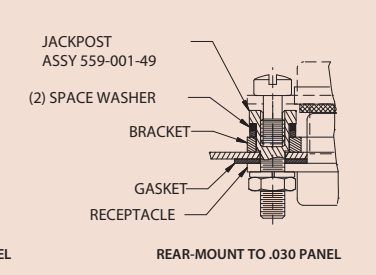
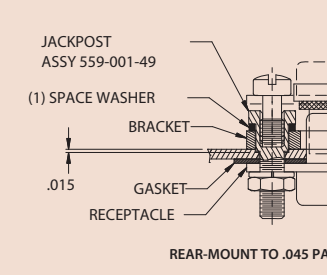
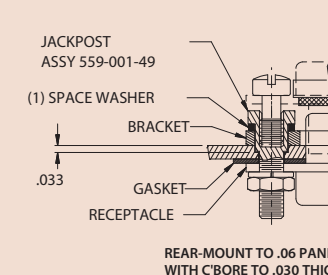
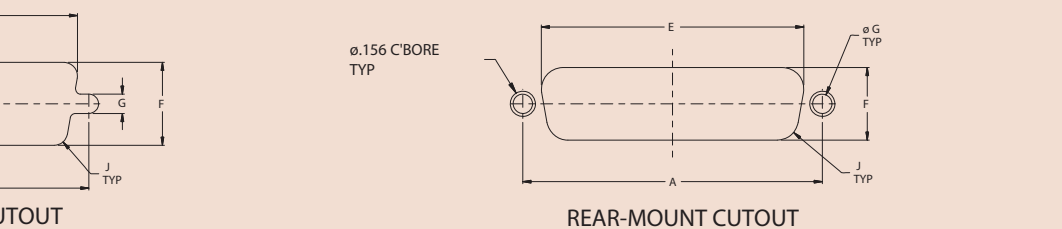
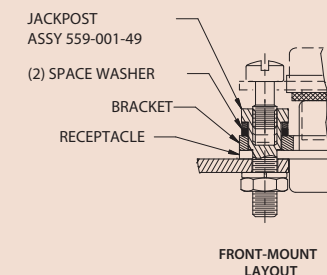
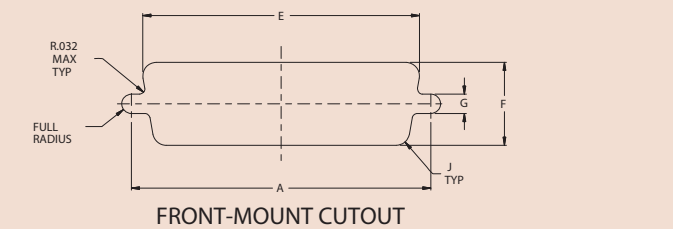
| Table I: Dimensions | | | | | | |
|---------------------|-------|-------|-------|-------|-------|-------|
| Shell Size | A | | B max | | C max | |
| | in | mm | in | mm | in | mm |
| 1 | .984 | 24.99 | 1.28 | 32.51 | .730 | 18.54 |
| 2 | 1.312 | 33.32 | 1.61 | 40.89 | .730 | 18.54 |
| 3 | 1.852 | 47.04 | 2.15 | 54.61 | .861 | 21.87 |
| 4 | 2.500 | 63.50 | 2.79 | 70.87 | .966 | 24.54 |
| 5 | 2.406 | 61.11 | 2.70 | 68.58 | 1.022 | 25.96 |
| 6 | 2.500 | 63.50 | 2.79 | 70.87 | 1.022 | 25.96 |

| Table II: Material and Finish | | |
|-------------------------------|----------|--|
| Sym | Material | Finish |
| MT | Aluminum | Nickel-PTFE |
| ZR | | Zinc-Nickel, Black (Tri-Valent CR) |
| M | | Electroless Nickel |
| NF | | Cad Plate / Olive Drab over Electroless Nickel |
| C | | Anodize / Black |
| UC | | Zinc Cobalt / Black |

| Table III: Panel Thickness | | | | |
|----------------------------|-----------------|------|-------|-------|
| Dash No. | Panel Thickness | | D max | |
| | in | mm | in | mm |
| T0 | .000 | 0.00 | .703 | 17.86 |
| T2 | .031 | 0.79 | .658 | 16.71 |
| T3 | .046 | 1.17 | .658 | 16.71 |
| T4 | .060 | 1.52 | .658 | 16.71 |

| Table IV: Front-Mount | | | | | | | | | | |
|-----------------------|---------------|-------|---------------|-------|---------------|-------|---------------|------|---------------|------|
| Shell Size | A ±.005 (.13) | | E ±.005 (.13) | | F ±.005 (.13) | | G ±.002 (.05) | | J ±.002 (.05) | |
| | in | mm | in | mm | in | mm | in | mm | in | mm |
| 1 | .984 | 24.99 | .874 | 22.20 | .513 | 13.03 | .120 | 3.05 | .083 | 2.11 |
| 2 | 1.312 | 33.32 | 1.202 | 30.53 | .513 | 13.03 | .120 | 3.05 | .083 | 2.11 |
| 3 | 1.852 | 47.04 | 1.743 | 44.27 | .513 | 13.03 | .120 | 3.05 | .083 | 2.11 |
| 4 | 2.500 | 63.50 | 2.391 | 60.73 | .513 | 13.03 | .120 | 3.05 | .083 | 2.11 |
| 5 | 2.406 | 61.11 | 2.297 | 58.34 | .623 | 15.82 | .120 | 3.05 | .083 | 2.11 |
| 6 | 2.500 | 63.50 | 2.421 | 61.49 | .685 | 17.40 | .120 | 3.05 | .083 | 2.11 |

| Table V: Rear-Mount | | | | | | | | | | |
|---------------------|---------------|-------|---------------|-------|---------------|-------|---------------|------|---------------|------|
| Shell Size | A ±.005 (.13) | | E ±.005 (.13) | | F ±.005 (.13) | | G ±.002 (.05) | | J ±.002 (.05) | |
| | in | mm | in | mm | in | mm | in | mm | in | mm |
| 1 | .984 | 24.99 | .806 | 20.47 | .449 | 11.40 | .120 | 3.05 | .132 | 3.35 |
| 2 | 1.312 | 33.32 | 1.134 | 28.80 | .449 | 11.40 | .120 | 3.05 | .132 | 3.35 |
| 3 | 1.852 | 47.04 | 1.674 | 42.52 | .449 | 11.40 | .120 | 3.05 | .132 | 3.35 |
| 4 | 2.500 | 63.50 | 2.326 | 59.08 | .449 | 11.40 | .120 | 3.05 | .132 | 3.35 |
| 5 | 2.406 | 61.11 | 2.218 | 56.34 | .555 | 14.10 | .120 | 3.05 | .132 | 3.35 |
| 6 | 2.500 | 63.50 | 2.352 | 59.74 | .623 | 15.82 | .120 | 3.05 | .132 | 3.35 |



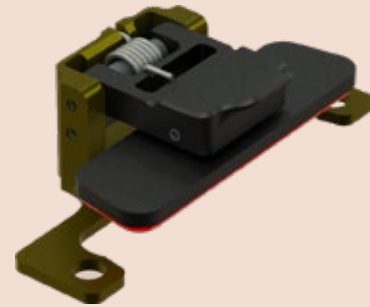
MIL-DTL-24308 D-Sub

SPRING ACTION
ProSeal™ environmental connector covers



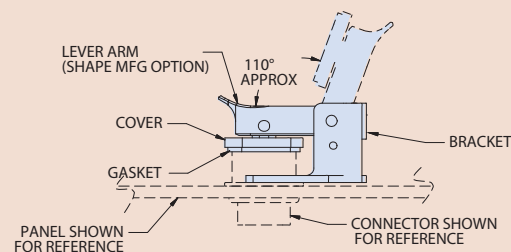
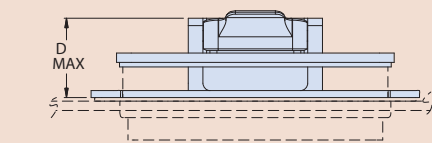
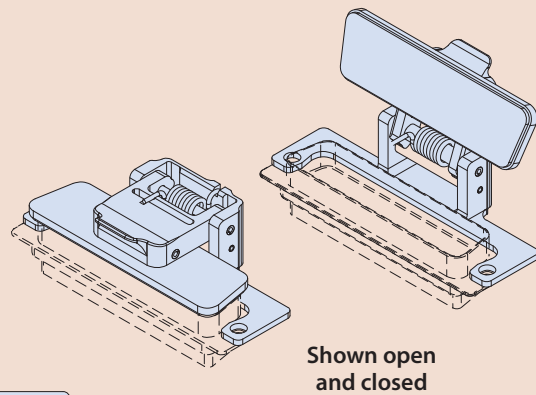
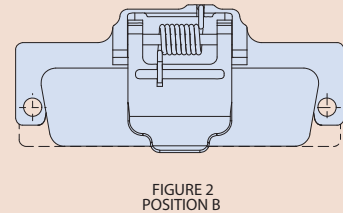
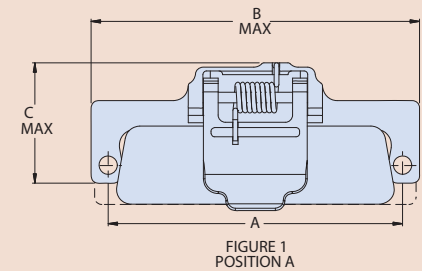
for Series 28 HiPer-D® connectors
Pressure seal, dust and spray resistant

667-479 PROSEAL PROTECTIVE COVER FOR SERIES 28 HIPER-D CONNECTORS



| How to Order 667-479 | | | | | | |
|----------------------|---|----|---|----|---|---|
| Sample Part Number | 667-479 | NF | 1 | T0 | A | K |
| Series | ProSeal protective cover for HiPer-D connectors | | | | | |
| Material / Finish | See Table II | | | | | |
| Shell Size | See Table I | | | | | |
| Panel Thickness | See Table III | | | | | |
| Connector Position | A = Figure 1 B = Figure 2 | | | | | |
| Mounting Kit | K = supplied with Kit Omit for none | | | | | |

- Pressure seal, dust and spray resistant
- Self-aligning
- Positive spring-action in closed position. Locks open at approximately 110° from receptacle face.



MATERIAL / FINISH

Cover, Lever Arm - Thermoplastic / black
Bracket - see Table II
Springs / Pins - 300 Series SST / Passivate
Sleeves - Delrin
Gasket - Silicone
Supplied with one kit of 559-001-049 with 2 jackpost mounting sets

SPRING ACTION
ProSeal™ environmental connector covers



for Series 28 HiPer-D® connectors
Pressure seal, dust and spray resistant

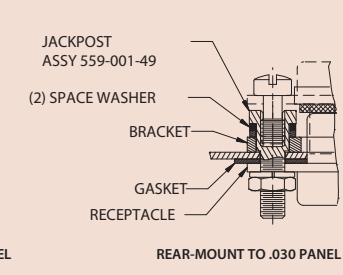
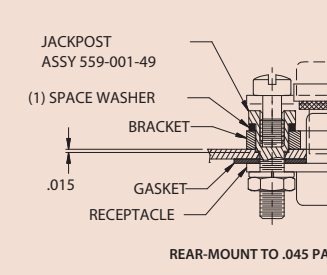
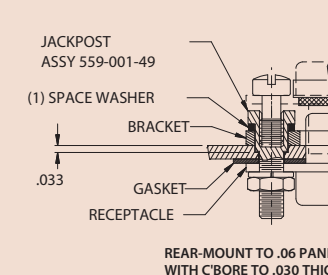
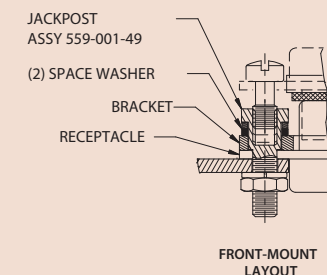
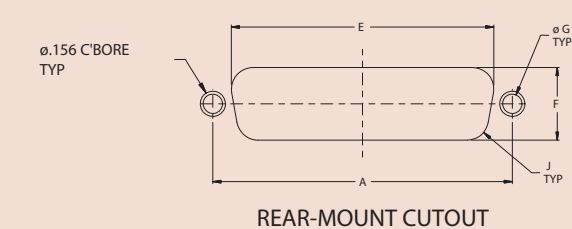
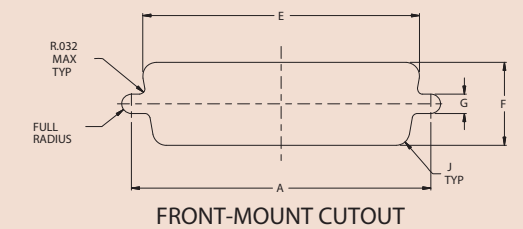
| Table I: Dimensions | | | | | | |
|---------------------|-------|-------|-------|-------|-------|-------|
| Shell Size | A | | B max | | C max | |
| | in | mm | in | mm | in | mm |
| 1 | .984 | 24.99 | 1.28 | 32.51 | .730 | 18.54 |
| 2 | 1.312 | 33.32 | 1.61 | 40.89 | .730 | 18.54 |
| 3 | 1.852 | 47.04 | 2.15 | 54.61 | .861 | 21.87 |
| 4 | 2.500 | 63.50 | 2.79 | 70.87 | .966 | 24.54 |
| 5 | 2.406 | 61.11 | 2.70 | 68.58 | 1.022 | 25.96 |
| 6 | 2.500 | 63.50 | 2.79 | 70.87 | 1.022 | 25.96 |

| Table II: Material and Finish | | |
|-------------------------------|----------|--|
| Sym | Material | Finish |
| MT | Aluminum | Nickel-PTFE |
| ZR | | Zinc-Nickel, Black (Tri-Valent CR) |
| M | | Electroless Nickel |
| NF | | Cad Plate / Olive Drab over Electroless Nickel |
| C | | Anodize / Black |
| UC | | Zinc Cobalt / Black |

| Table III: Panel Thickness | | | | |
|----------------------------|-----------------|------|-------|-------|
| Dash No. | Panel Thickness | | D max | |
| | in | mm | in | mm |
| T0 | .000 | 0.00 | .703 | 17.86 |
| T2 | .031 | 0.79 | .658 | 16.71 |
| T3 | .046 | 1.17 | .658 | 16.71 |
| T4 | .060 | 1.52 | .658 | 16.71 |

| Table IV: Front-Mount | | | | | | | | | | |
|-----------------------|---------------|-------|---------------|-------|---------------|-------|---------------|------|---------------|------|
| Shell Size | A ±.005 (.13) | | E ±.005 (.13) | | F ±.005 (.13) | | G ±.002 (.05) | | J ±.002 (.05) | |
| | in | mm | in | mm | in | mm | in | mm | in | mm |
| | 1 | .984 | 24.99 | .874 | 22.20 | .513 | 13.03 | .120 | 3.05 | .083 |
| 2 | 1.312 | 33.32 | 1.202 | 30.53 | .513 | 13.03 | .120 | 3.05 | .083 | 2.11 |
| 3 | 1.852 | 47.04 | 1.743 | 44.27 | .513 | 13.03 | .120 | 3.05 | .083 | 2.11 |
| 4 | 2.500 | 63.50 | 2.391 | 60.73 | .513 | 13.03 | .120 | 3.05 | .083 | 2.11 |
| 5 | 2.406 | 61.11 | 2.297 | 58.34 | .623 | 15.82 | .120 | 3.05 | .083 | 2.11 |
| 6 | 2.500 | 63.50 | 2.421 | 61.49 | .685 | 17.40 | .120 | 3.05 | .083 | 2.11 |

| Table V: Rear-Mount | | | | | | | | | | |
|---------------------|---------------|-------|---------------|-------|---------------|-------|---------------|------|---------------|------|
| Shell Size | A ±.005 (.13) | | E ±.005 (.13) | | F ±.005 (.13) | | G ±.002 (.05) | | J ±.002 (.05) | |
| | in | mm | in | mm | in | mm | in | mm | in | mm |
| | 1 | .984 | 24.99 | .806 | 20.47 | .449 | 11.40 | .120 | 3.05 | .132 |
| 2 | 1.312 | 33.32 | 1.134 | 28.80 | .449 | 11.40 | .120 | 3.05 | .132 | 3.35 |
| 3 | 1.852 | 47.04 | 1.674 | 42.52 | .449 | 11.40 | .120 | 3.05 | .132 | 3.35 |
| 4 | 2.500 | 63.50 | 2.326 | 59.08 | .449 | 11.40 | .120 | 3.05 | .132 | 3.35 |
| 5 | 2.406 | 61.11 | 2.218 | 56.34 | .555 | 14.10 | .120 | 3.05 | .132 | 3.35 |
| 6 | 2.500 | 63.50 | 2.352 | 59.74 | .623 | 15.82 | .120 | 3.05 | .132 | 3.35 |



Series 28 HiPer-D

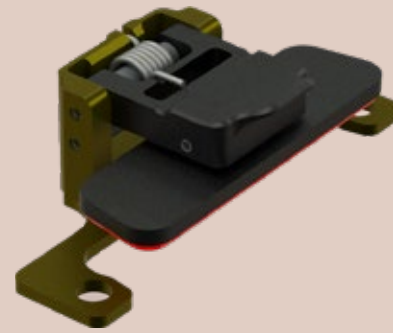
SPRING ACTION
ProSeal™ environmental connector covers
 for rear-mount Series 79 connectors
 (790-026 and 790-027)



SPRING ACTION
ProSeal™ environmental connector covers
 for rear-mount Series 79 connectors
 (790-026 and 790-027)

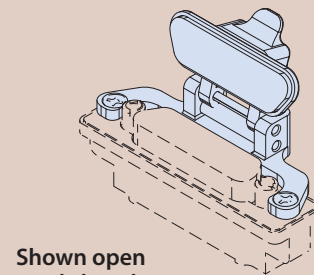
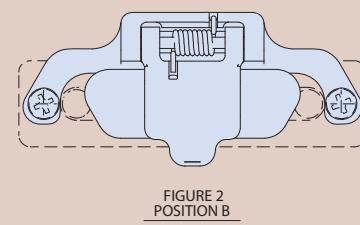
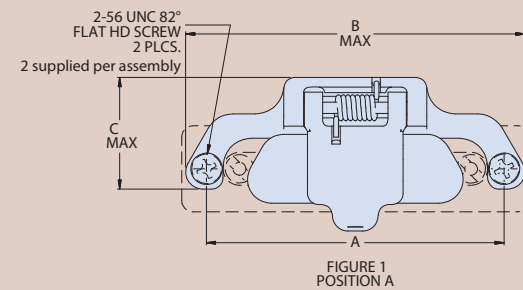


667-486 PROSEAL PROTECTIVE COVER FOR SERIES 79 CONNECTORS

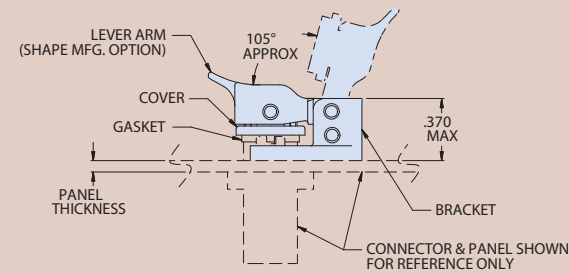
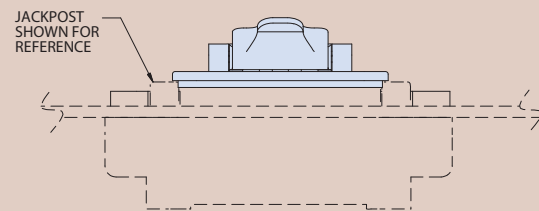
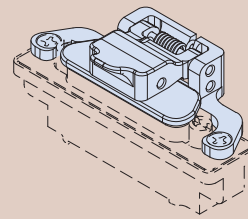


| How to Order 667-486 | | | | | | |
|---------------------------|---|-----------|----------|-----------|----------|----------|
| Sample Part Number | 667-486 | NF | F | T3 | A | K |
| Series | ProSeal protective cover for Series 79 connectors | | | | | |
| Finish | See Table II | | | | | |
| Shell Size | See Table I | | | | | |
| Panel Thickness | See Table III | | | | | |
| Connector Position | A = Figure 1 B = Figure 2 | | | | | |
| Mounting Kit | K = supplied with mounting kit (Two 2-56 UNC 82° flat head mounting screws supplied per assembly) Omit for no mounting kit | | | | | |

- Pressure seal, dust and spray resistant
- Self-aligning
- Positive spring-action in closed position. Locks open at approximately 105° from receptacle face.



Shown open and closed



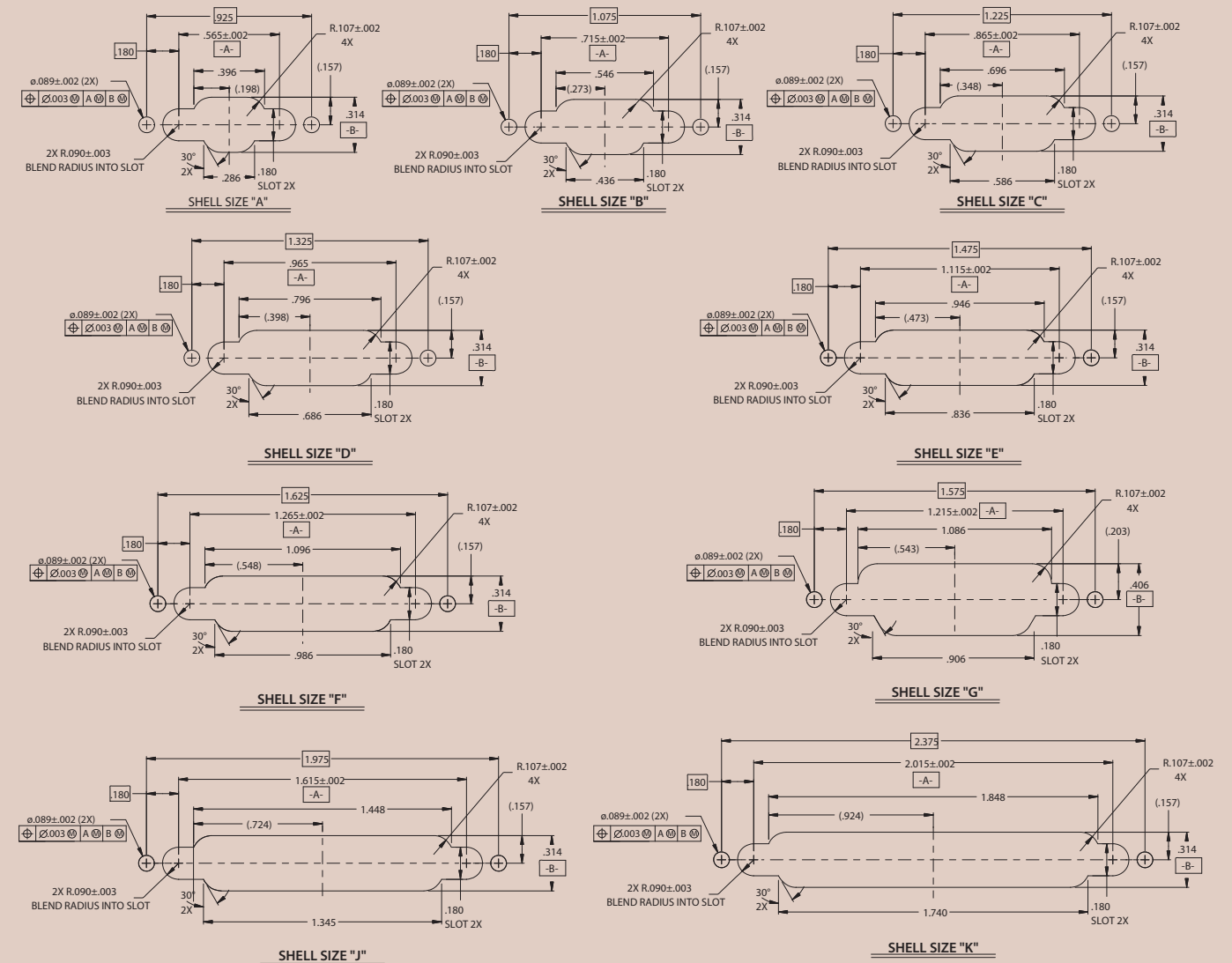
MATERIAL / FINISH

Bracket - Aluminum Alloy / see Table II
 Cover, Lever Arm - Thermoplastic, black
 Springs / Pins - 300 Series SST / Passivate
 Sleeves - Delrin Gasket - Silicone

| Shell Size | Table I: Dimensions | | | | | |
|------------|---------------------|-------|-------|-------|-------|-------|
| | A | | B max | | C max | |
| | in | mm | in | mm | in | mm |
| A | .925 | 23.50 | 1.183 | 30.05 | .541 | 13.74 |
| B | 1.075 | 27.31 | 1.333 | 33.86 | .640 | 16.26 |
| C | 1.225 | 31.12 | 1.483 | 37.67 | .640 | 16.26 |
| D | 1.325 | 33.66 | 1.583 | 40.21 | .662 | 16.81 |
| E | 1.475 | 37.47 | 1.733 | 44.02 | .662 | 16.81 |
| F | 1.625 | 41.28 | 1.883 | 47.83 | .640 | 16.26 |
| G | 1.575 | 40.01 | 1.863 | 47.32 | .662 | 16.81 |
| J | 1.975 | 50.17 | 2.233 | 56.72 | .640 | 16.26 |
| K | 2.375 | 60.33 | 2.633 | 66.88 | .683 | 17.35 |

| Table II: Material and Finish | | |
|-------------------------------|----------|--|
| Sym | Material | Finish |
| MT | Aluminum | Nickel-PTFE |
| ZR | | Zinc-Nickel, Black (Tri-Valent CR) |
| M | | Electroless Nickel |
| NF | | Cad Plate / Olive Drab over Electroless Nickel |
| C | | Anodize / Black |
| UC | | Zinc Cobalt / Black |

Recommended Panel Cut-Outs



Series 79

SPRING ACTION
ProSeal™ environmental connector covers
 for rear- and front-mount Series 79 connectors
 (790-024 and 790-025)



SPRING ACTION
ProSeal™ environmental connector covers
 for rear- and front-mount Series 79 connectors
 (790-024 and 790-025)

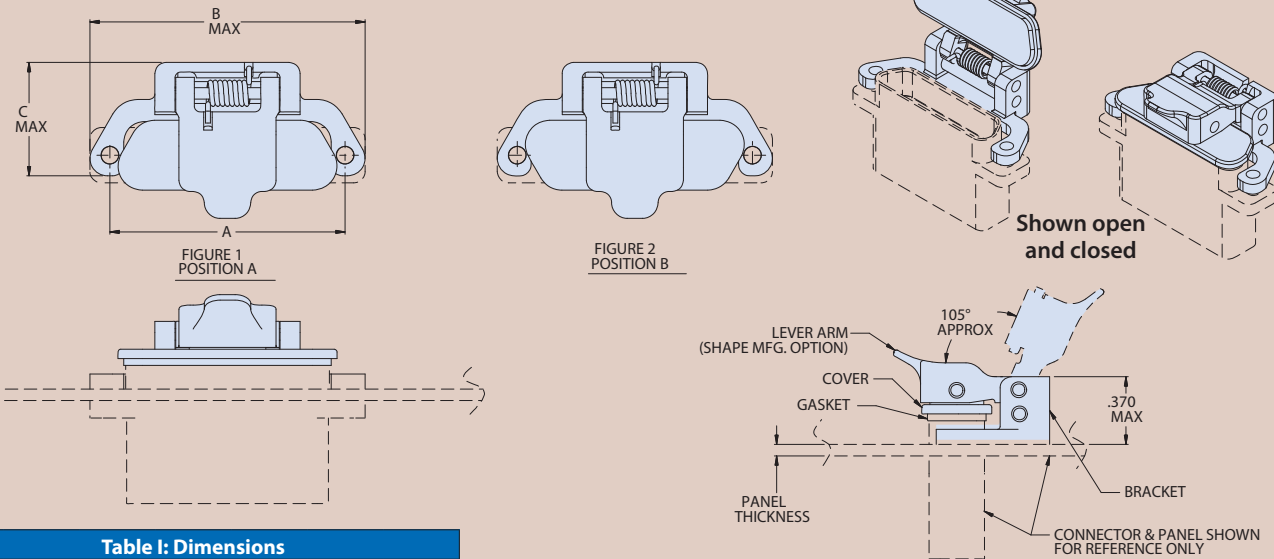
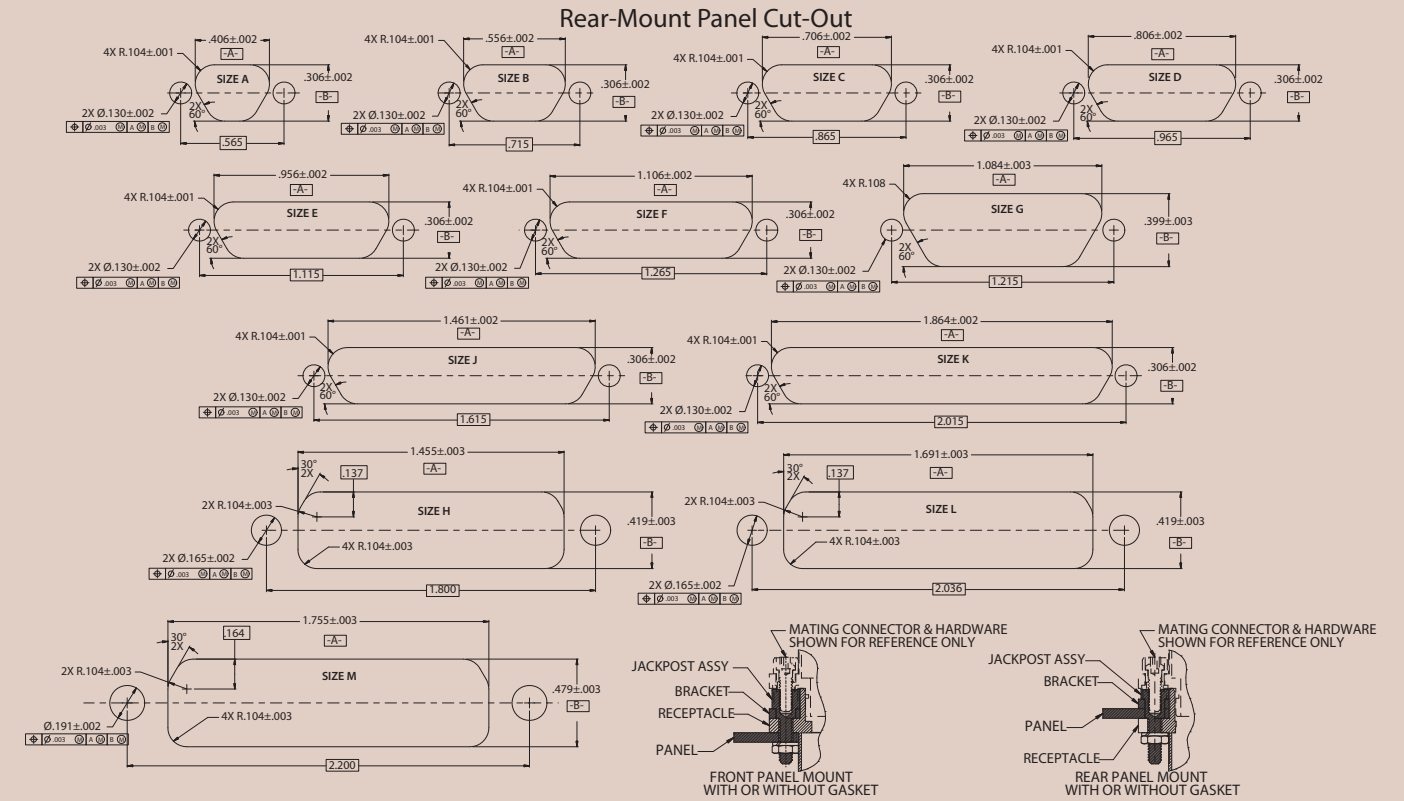


667-513 PROSEAL PROTECTIVE COVER FOR SERIES 79 CONNECTORS



- Pressure seal, dust and spray resistant
- Self-aligning
- Positive spring-action in closed position. Locks open at approximately 105° from receptacle face.

| How to Order 667-513 | | | | | |
|----------------------|---|----|---|----|---|
| Sample Part Number | 667-513 | NF | F | T3 | A |
| Series | ProSeal protective cover for Series 79 connectors | | | | |
| Finish | See Table II | | | | |
| Shell Size | See Table I | | | | |
| Panel Thickness | T3 fits nominally onto panel with .062" (1.57mm) thickness, will work for panels as thin as .031" (.79mm) | | | | |
| Connector Position | A = Figure 1 B = Figure 2 | | | | |

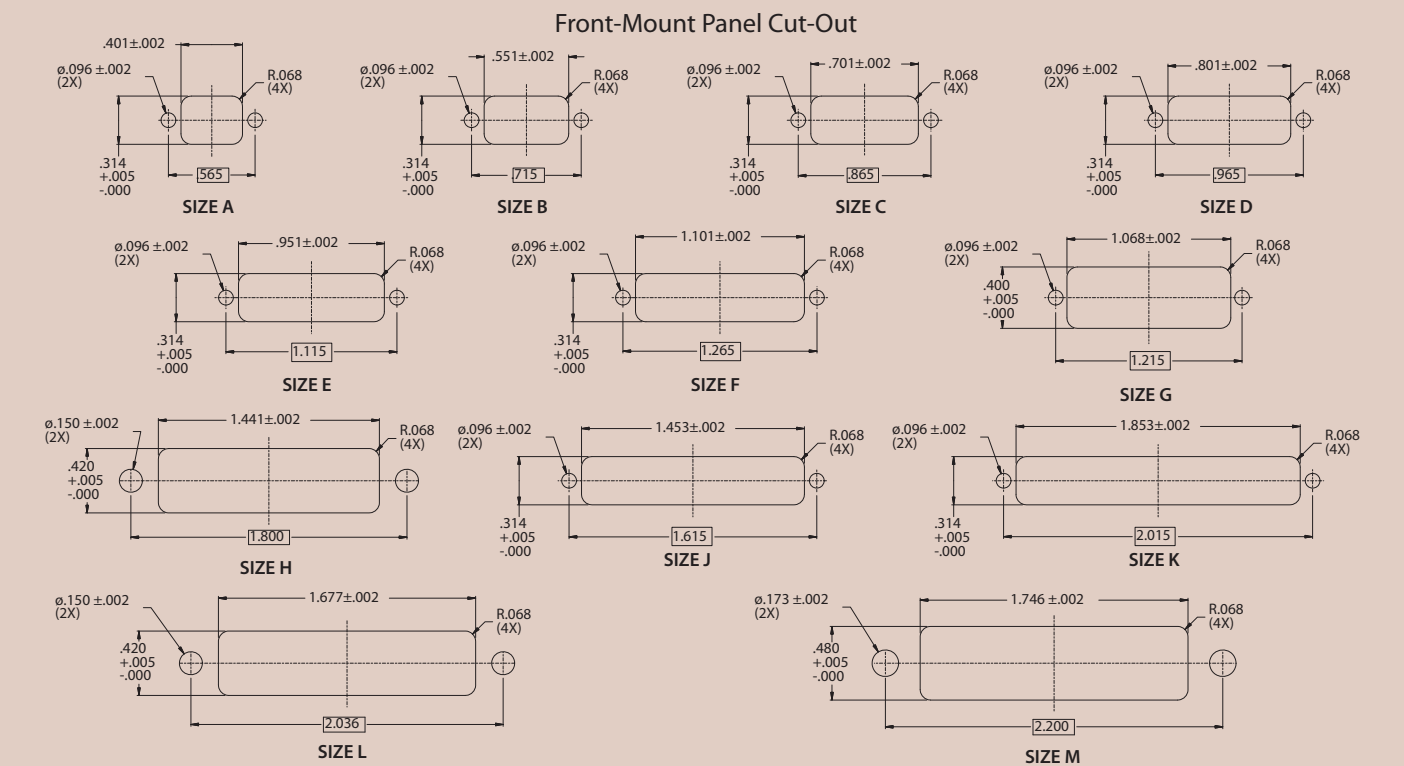


| Shell Size | A | | B max | | C max | |
|------------|-------|-------|-------|-------|-------|-------|
| | in | mm | in | mm | in | mm |
| A | .565 | 14.35 | .810 | 20.57 | .541 | 13.74 |
| B | .715 | 18.16 | .960 | 24.38 | .640 | 16.26 |
| C | .865 | 21.97 | 1.110 | 28.19 | .640 | 16.26 |
| D | .965 | 24.51 | 1.210 | 30.73 | .662 | 16.81 |
| E | 1.115 | 28.32 | 1.360 | 34.54 | .662 | 16.81 |
| F | 1.265 | 32.13 | 1.510 | 38.35 | .640 | 16.26 |
| G | 1.215 | 30.86 | 1.460 | 37.08 | .662 | 16.81 |
| J | 1.615 | 41.02 | 1.865 | 47.37 | .640 | 16.26 |
| K | 2.015 | 51.18 | 2.260 | 57.41 | .683 | 17.35 |

| Sym | Material | Finish |
|-----|----------|--|
| MT | Aluminum | Nickel-PTFE |
| ZR | | Zinc-Nickel, Black (Tri-Valent CR) |
| M | | Electroless Nickel |
| NF | | Cad Plate / Olive Drab over Electroless Nickel |
| C | | Anodize / Black |
| UC | | Zinc Cobalt / Black |

MATERIAL / FINISH

Bracket - Aluminum Alloy / see Table II
 Cover, Lever Arm - Thermoplastic, black
 Springs / Pins - 300 Series SST / Passivate
 Sleeves - Delrin Gasket - Silicone



SPRING ACTION
ProSeal™ environmental connector covers
 for USB connectors
 Pressure seal, full environmental



SPRING ACTION
ProSeal™ environmental connector covers
 for M81790/1 aircraft external power connectors
 Pressure seal, dust and spray resistant

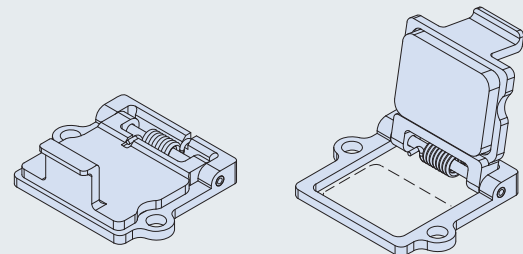


667-431 PROSEAL PROTECTIVE COVER FOR USB CONNECTORS

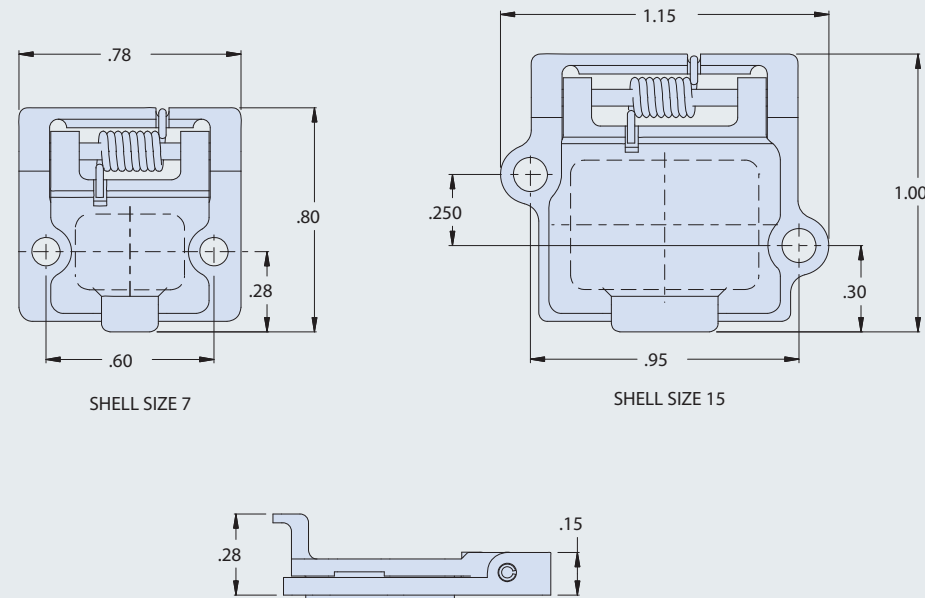


| How to Order 667-431 | | | |
|----------------------|---|----|----|
| Sample Part Number | 667-431 | MT | 15 |
| Series | ProSeal protective cover for USB connectors | | |
| Material / Finish | See Table I | | |
| Shell Size | 7, 15 | | |

- Pressure seal, full environmental protection
- Positive spring-action in closed position



Shown closed and open



| Table I: Material and Finish | | |
|------------------------------|----------|--|
| Sym | Material | Finish |
| MT | Aluminum | Nickel-PTFE |
| ZR | | Zinc-Nickel, Black (Tri-Valent CR) |
| M | | Electroless Nickel |
| NF | | Cad Plate / Olive Drab over Electroless Nickel |
| C | | Anodize / Black |
| UC | | Zinc Cobalt / Black |

MATERIAL / FINISH

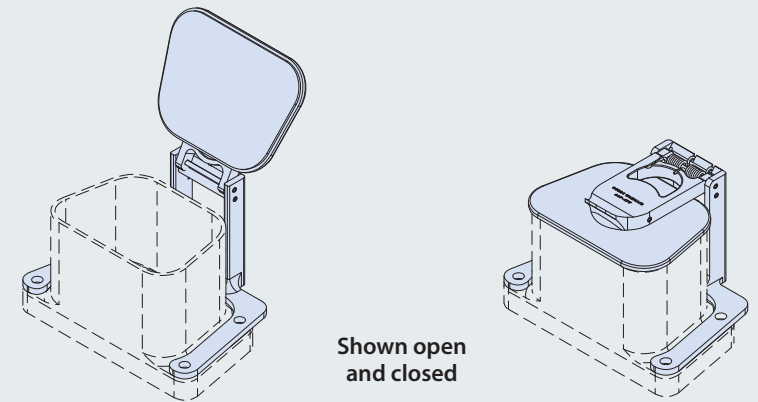
Cover / Bracket - See Table I
 Spring / Roll Pin - Stainless Steel / Passivate
 Gasket - Silicone

667-477 PROSEAL PROTECTIVE COVER FOR M81790/1 AIRCRAFT EXTERNAL POWER CONNECTORS

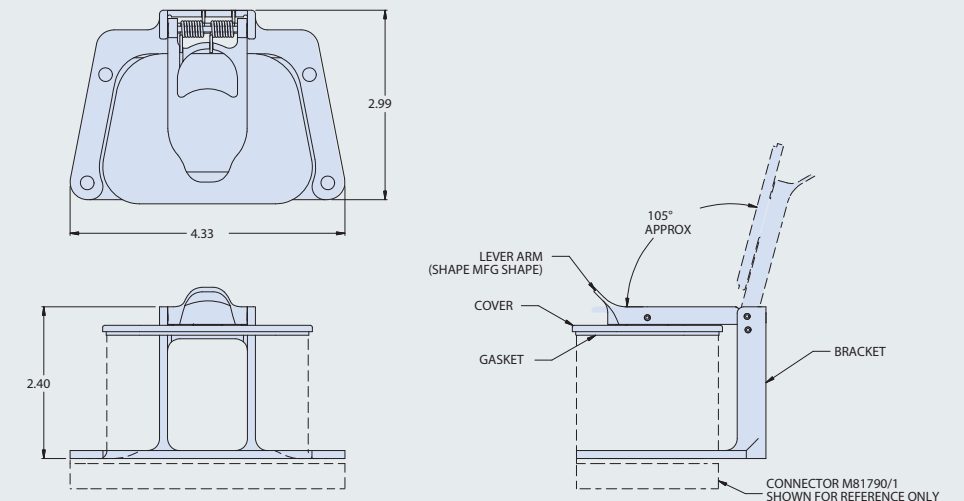


| How to Order 667-477 | | | |
|----------------------------------|---|---|----------|
| Sample Part Number | 667-477 | C | -T0W -59 |
| Series | ProSeal protective cover for M81790/1 connectors | | |
| Material / Finish | See Table I | | |
| Panel Thickness (Mounting Style) | -T0W | | |
| Gasket Material | -59 = EMI Silicone Gasket (CONSIL II) Omit for Silicone Gasket | | |

- Pressure seal, dust and spray resistant
- Self-aligning
- Spring-action cover stays open at approximately 105° from receptacle face.



Shown open and closed



| Table I: Material and Finish | | |
|------------------------------|----------|--|
| Sym | Material | Finish |
| MT | Aluminum | Nickel-PTFE |
| ZR | | Zinc-Nickel, Black (Tri-Valent CR) |
| M | | Electroless Nickel |
| NF | | Cad Plate / Olive Drab over Electroless Nickel |
| C | | Anodize / Black |
| UC | | Zinc Cobalt / Black |

MATERIAL / FINISH

Cover / Bracket / Lever Arm - Aluminum Alloy 6061-T6 / see Table I for finish
 Springs / Pins - Stainless Steel / Passivate
 Sleeves - Delrin
 Gasket - Silicone

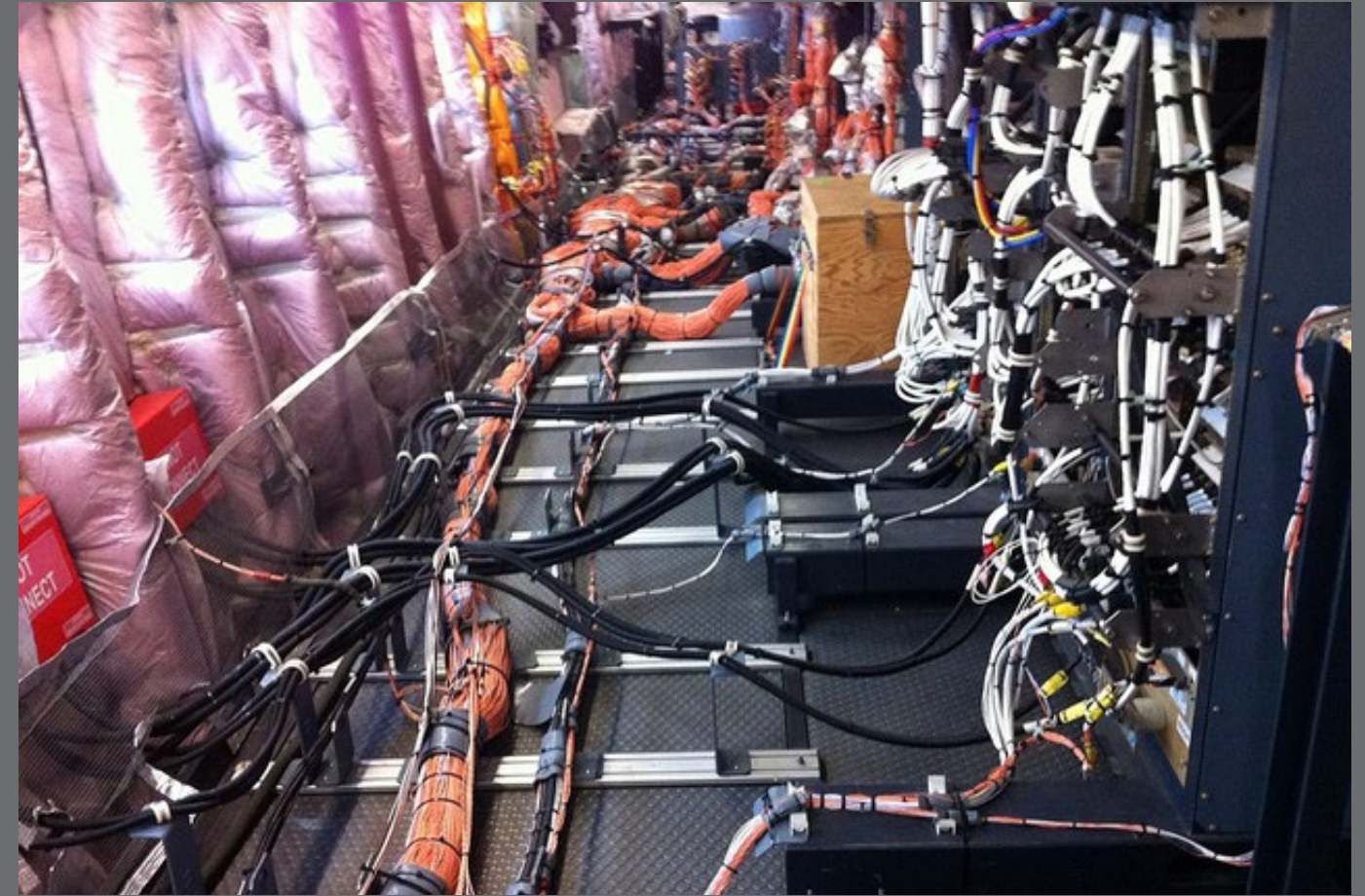
USB • Power

USB • Power



ADVANCED
PERFORMANCE
WIRE MANAGEMENT
SOLUTIONS

Special-purpose backshell and accessory
designs for commercial and military
aerospace applications



Innovative solutions to aircraft EWIS environmental sealing, wire management, strain relief, and EMC shield termination

COMPOSITE EMI/RFI ENVIRONMENTAL JUNCTION BOXES



Modular junction box with
feed-thru fittings and caps



Custom connectorized
low-profile composite data hub



Heavy-duty composite
cable/equipment bay

- High-performance connector accessories for aviation industry environmental, mechanical and electromagnetic shielding requirements
- Tens of thousands of innovative part numbers in inventory ready for same-day shipment
- Fast turnaround on made-to-order accessories, typically only two to three weeks
- Constant, relentless backshell innovation

NEW INNOVATIONS IN
Connector Backshells and Accessories

Unique, problem-solving backshells and connector accessories for aerospace applications



METAL AND COMPOSITE
Rectangular backshells and accessories

The world's largest *tooled* selection



HIGH-TEMP, LIGHTWEIGHT COMPOSITE THERMOPLASTIC ACCESSORIES



Split-shell and snap-lock banding backshells

Connector coupling ring safety sleeve for F/O applications

Piggyback boot Band-in-a-Can

Drop-in EMI/RFI shield termination configurations

PRESSURE BOUNDARY, FIREWALL, AND SPLIT-SHELL FEED-THRU



Pressure boundary composite feed-thru

Firewall pressure boundary feed-thru

EMI/RFI split-shell metal feed-thru

- High-grade engineering thermoplastic or machined metal
- Six pressure-boundary feed-thru layouts with accommodation for 1 – 6 cables
- Split-shell jam nut versions with EMI/RFI shield termination porch
- O-ring sealed panel and box mounting interface

INNOVATIVE EWIS WIRE MANAGEMENT TECHNOLOGIES



Dummy stowage shorting plugs and receptacles

Self-locking protective covers

Advanced "Dogbone" terminal blocks and hoods

Series 437-001 Backshell "Connector Saver"

Environmental panel cut-out sealing plug assembly

Heat shrink boot / wire routing clamp assembly

MICRO-D AND NANOMINIATURE BACKSHELLS AND CONNECTOR ACCESSORIES



Composite Micro-D banding backshell

Plastic and metal covers for unmated environmental protection

Micro-D backshell with elliptical banding platform

Metal Micro-D banding backshell

M24308 D-SUB SOLUTIONS: HIGH PERFORMANCE, RUGGEDIZED D-SUBMINIATURE PRODUCTS



Split-shell D-subminiature composite backshell

Split-shell M24308 dual-banding backshell

Composite D-subminiature backshells

Flex-D Composite M24308 Backshell

LARGER FORM FACTOR RECTANGULAR BACKSHELLS

EPX® and EPXB® are registered trademarks of Radiall



Composite EMI/RFI banding backshell for EPXB® connectors

Composite EN4165 fiber optic/electrical backshells

Backshells for EPX® series connectors

ARINC series backshells



Composite airframe banding backshell

ARINC series backshell with individual wire bundle strain relief

MIL-C-81659

Special Quadrax connector backshell

Glenair Mil-Spec Interconnect Technologies



Qualified Products: Glenair is a Mil-Aero connector supplier. Our product quality begins in engineering (the largest team in the high-performance interconnect business) and is realized in our “made in the USA” vertically-integrated manufacturing cells. One of the key ways we ensure both areas are functioning smoothly is to submit designs and manufactured specimens into the military QPL process administered by the Defense Logistic Agency of the US government. These certification exercises are multi-year activities that test every aspect of a connector’s performance.



MIL-DTL-38999 Series III environmental connectors



MIL-DTL-38999 Series IV environmental connectors



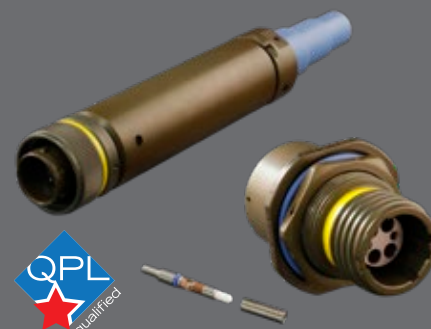
MIL-DTL-28840 shipboard connectors and accessories



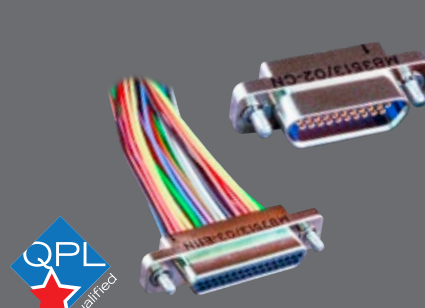
MIL-DTL-38999 Series I, II, III, and IV hermetic connectors



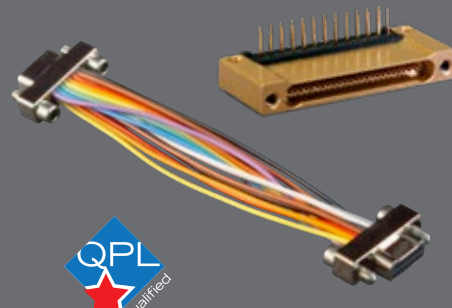
MIL-DTL-24308 hermetic connectors



MIL-DTL-28876 shipboard fiber optic



MIL-DTL-83513 Micro-D connectors and accessories



MIL-DTL-32139 Nanominiature connectors and accessories



MIL-DTL-29504 (fiber optic) and AS39029 (electrical) contacts



MIL-DTL-55116 Radio / Audio Connectors



VG95234 Reverse-Bayonet and VG96929 Single-Pole



VG95328 Bayonet-Lock IAW MIL-C-26482



M85049 (AS85049) backshells and connector accessories



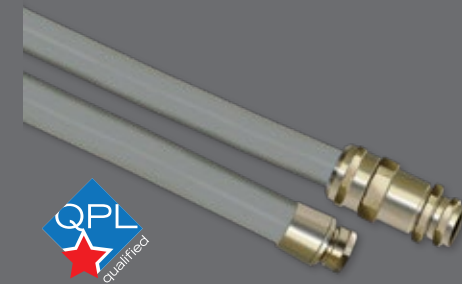
MIL-DTL-83723 backshells and connector accessories



M81511 (AS81511) protective covers and connector accessories



M85049/140 series qualified / TACOM-approved environmental shrink boots



MIL-PRF-24758 Navsea-qualified conduit and fittings



M85049 composite backshells and covers for MIL-DTL-38999

GLENAIR'S COMMITMENT TO QUALITY

Glenair is proud of the quality and reliability we build into our broad range of mission-critical interconnect solutions—from discrete connectors to complex cable assemblies and embedded systems. Glenair is the biggest “made in the USA” interconnect supplier in the high-reliability industry, but we also operate factories in the UK, Italy, and Germany to serve the unique requirements of those markets. Glenair’s Worldwide Quality System is ISO 9001 and AS9100 certified and registered. We also hold many discrete product and operations certifications for specialty, high-performance markets including space, nuclear power, and rail. In addition to world-class quality, we are laser-focused on customer service and committed to being the easiest manufacturer in our industry to do business with. Here are just some of our key customer service principles:



- Lightning-fast turnarounds on quotes and special orders
- Worldwide sales and technical support in every major market
- Full-spectrum, “no gap” product lines
- No dollar or quantity minimums
- ISO 9001 and AS9100 certified
- Huge same-day shipment inventory
- Generous NRE, RMA, and sample request policies
- Abundant engineering and technical support
- No attitudinal constraints when it comes to customer convenience and service



MISSION-CRITICAL INTERCONNECT SOLUTIONS

Glenair, Inc.

1211 Air Way • Glendale, California • 91201-2497

Telephone: 818-247-6000 • Fax: 818-500-9912 • sales@glenair.com

www.glenair.com

Glenair Power Products Group

20 Sterling Drive
Wallingford, CT
06492

Telephone:
203-741-1115
Facsimile:
203-741-0053
sales@glenair.com

Glenair UK Ltd

40 Lower Oakham Way
Oakham Business Park
Mansfield, Notts
NG18 5BY England

Telephone:
+44-1623-638100
Facsimile:
+44-1623-638111
sales@glenair.co.uk

Glenair Microway Systems

7000 North Lawndale Avenue
Lincolnwood, IL
60712

Telephone:
847-679-8833
Facsimile:
847-679-8849

Glenair Nordic AB

Gustav III : S Boulevard 42
SE-169 27 Solna
Sweden

Telephone:
+46-8-50550000
sales@glenair.se

Glenair GmbH

Schaberweg 28
61348 Bad Homburg
Germany

Telephone:
06172 / 68 16 0
Facsimile:
06172 / 68 16 90
info@glenair.de

Glenair Iberica

C/ La Vega, 16
45612 Velada
Spain

Telephone:
+34-925-89-29-88
Facsimile:
+34-925-89-29-87
sales@glenair.es

Glenair Italia S.p.A.

Via Del Lavoro, 7
40057 Quarto Inferiore –
Granarolo dell'Emilia
Bologna, Italy

Telephone:
+39-051-782811
Facsimile:
+39-051-782259
info@glenair.it

Glenair France SARL

7, Avenue Parmentier
Immeuble Central Parc #2
31200 Toulouse
France

Telephone:
+33-5-34-40-97-40
Facsimile:
+33-5-61-47-86-10
sales@glenair.fr

Glenair Korea

B-1304 Gunpo IT Valley
148 Gosan-Ro, Gunpo-Si
Kyunggi-Do, Korea
435-733

Telephone:
+82-31-8068-1090
Facsimile:
+82-31-8068-1092
sales@glenair.kr