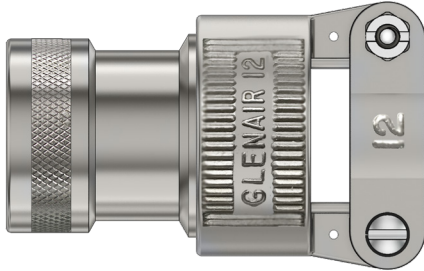




Series 36 Strain Relief Backshells

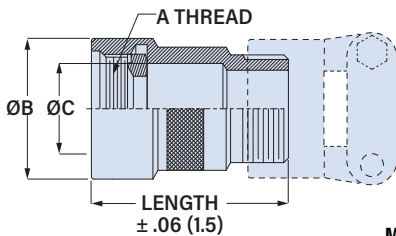
for MIL-DTL-38999 Series III/IV Connectors

360HS002 Backshell, Strain Relief, Direct Coupling



Adapter Code **H**

This accessory fits these connectors:
MIL-DTL-38999 Series III and Series IV



Shell Size	A Thread	ØB Max in mm	ØC in mm	Max Entry Size (1)
09	M12X1.0-6H	.65 16.5	.30 7.6	04
11	M15X1.0-6H	.77 19.6	.43 10.9	06
13	M18X1.0-6H	.89 22.6	.55 14.0	08
15	M22X1.0-6H	1.03 26.2	.68 17.3	10
17	M25X1.0-6H	1.15 29.2	.80 20.3	12
19	M28X1.0-6H	1.28 32.5	.93 23.6	16
21	M31X1.0-6H	1.41 35.8	1.05 26.7	16
23	M34X1.0-6H	1.53 38.9	1.18 30.0	16
25	M37X1.0-6H	1.66 42.2	1.30 33.0	20

Heavy duty saddle clamp. 360HS002 backshell fits MIL-DTL-38999 Series III and IV connectors. Direct coupling, non-environmental. Heavy duty die cast saddle clamp has stainless steel telescoping fillister head screws and lockwashers. Available in aluminum or stainless steel.

PART NUMBER

360HS002 M 11 04 H 3

Base P/N **360HS002**

Material/Finish
C Alum/ Black Anodize
M Alum/ Electroless Nickel
MT Alum/ Nickel-PTFE
NF Alum/ Olive Drab Cadmium
ZR Alum/ Black Zinc-Nickel
TZ Alum/ Tin-Zinc
Z1 SST/ Passivated

Shell Size	Shell Size									
	9	11	13	15	17	19	21	23	25	
	A	B	C	D	E	F	G	H	J	
Size Code	09	11	13	15	17	19	21	23	25	

Entry Size	Max Cable Dia.	Shell Size*	Entry Size	Max Cable Dia.	Shell Size*
04	.312 (7.9)	09-25	16	.937 (23.8)	19-25
06	.437 (11.1)	11-25	20	1.250 (31.8)	25
08	.562 (14.3)	13-25	24	1.375 (34.9)	-
10	.625 (15.9)	15-25	28	1.625 (41.3)	-
12	.750 (19.1)	17-25	32	1.875 (47.6)	-

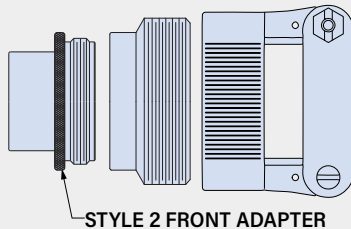
* If selected entry size exceeds shell size range, a Style 2 transition adapter will be included. See Maximum Entry Size for details.

Strain Relief H Saddle Clamp, Heavy Duty

Length	Code	Length
3	1.5 inches	If Entry Size is greater than "Max Entry Size" (see table at left), then 2 inch minimum applies.
4	2.0 inches	
6	3.0 inches	
8	4.0 inches	

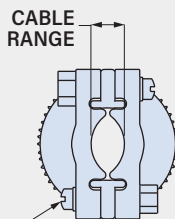
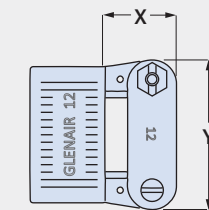
MAXIMUM ENTRY SIZE

(1) If the selected entry size exceeds the maximum size shown in table, the backshell will include a Style 2 front adapter.



The minimum length code increases from 3 (1 1/2 inches) to 4 (2 inches).

STRAIN RELIEF DIMENSIONS



TELESCOPING SCREW, FILLISTER HD., WITH LOCKWASHER

Entry Size	X Max		Y Max		Cable Range			
	in	mm	in	mm	Min in	Min mm	Max in	Max mm
04	.780	19.8	.957	24.3	.125	3.2	.312	7.9
06	.780	19.8	1.145	29.1	.250	6.4	.437	11.1
08	.780	19.8	1.332	33.8	.312	7.9	.562	14.3
10	.780	19.8	1.332	33.8	.350	8.9	.625	15.9
12	.811	20.6	1.551	39.4	.500	12.7	.750	19.1
16	.905	23.0	1.770	45.0	.625	15.9	.937	23.8
20	1.092	27.7	2.113	53.7	.875	22.2	1.250	31.8
24	1.124	28.5	2.363	60.0	1.000	25.4	1.375	34.9
28	1.399	35.5	2.770	70.4	1.250	31.8	1.625	41.3
32	1.399	35.5	3.020	76.7	1.437	36.5	1.875	47.6