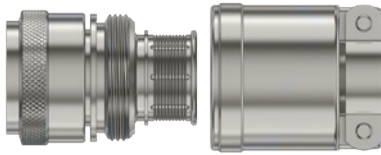


# Series 44 Banding Backshells

for Series 80 Mighty Mouse Connectors

## 447MS981 Banding Backshell, Shrouded



**Adapter Code M**

This accessory fits Series 80 Mighty Mouse Connectors

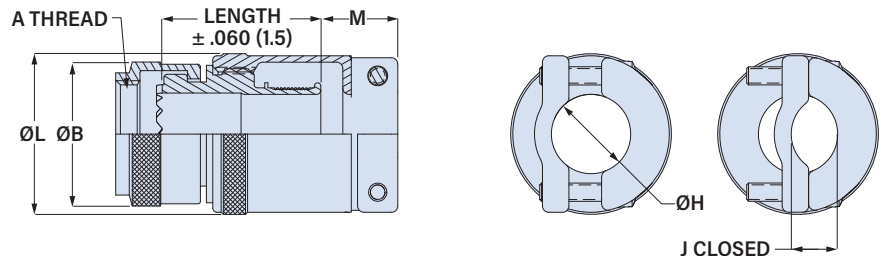
**BANDING STRAP**

Terminate cable braid to backshell with optional banding strap. Band-Master ATS® banding system provides quick, easy, cost-effective and highly reliable termination of braid shield. Stainless steel.

Shell Sizes	Pre-Coiled Band P/N	Length	Max Diameter
05 - 10	<b>601-061</b>	8.13 (206)	.88 (22.4)
12 - 14	<b>601-065</b>	14.25 (362)	1.88 (47.8)

**"Band-in-a-Can". EMI. Micro band.** 447MS981 banding backshell fits Glenair Series 80 Mighty Mouse connectors. Terminate cable braid shield to backshell with optional micro band strap. Aluminum or stainless steel. Saddle and screws are stainless steel.

PART NUMBER		447MS981	M	08	06	-6	K
Base P/N	<b>447MS981</b>						
Material/Finish	<b>M</b> Alum/ Electroless Nickel <b>MT</b> Alum/ Nickel-PTFE <b>NF</b> Alum/ Olive Drab Cadmium <b>ZR</b> Alum/ Black Zinc-Nickel <b>TZ</b> Alum/ Tin-Zinc <b>ZI</b> SST/ Passivated						
Shell Size	See table 1						
Entry Size	See Table 2						
Length	Length Code	Length		In 1/8 inch increments. Code 06 (0.75 inches) is the minimum length.			
	<b>06</b>	.75 (19.1)					
	<b>08</b>	1.00 (25.4)					
	<b>12</b>	1.50 (38.1)					
Band	Omit if not required						
	<b>K</b>	Pre-Coiled Band Included					



**TABLE 1: SHELL SIZE**

Shell Size Code	Shell Size		A Thread UNEF-2B	øB Max		Max Entry Size
	Series 800, 801, 803, 804	Series 805		in	mm	
<b>05</b>	5	N/A	0.250-32	.470	11.9	25
<b>06</b>	6	N/A	0.3125-32	.530	13.5	35
<b>11</b>	N/A	8	0.3750-32	.570	14.5	04
<b>07</b>	7	9	0.4375-28	.637	16.2	05
<b>08</b>	8	10	0.500-28	.700	17.8	06
<b>09</b>	9	11	0.5625-24	.758	19.3	07
<b>10</b>	10	12	0.625-24	.819	20.8	08
<b>12</b>	11, 12, 13	13	0.6875-24	.896	22.8	09
<b>13</b>	N/A	15	0.750-20	.930	23.6	10
<b>14</b>	14, 15, 16, 17	18, 19	0.9375-20	1.137	28.9	13
<b>16</b>	19	21	1.0625-18	1.250	31.8	14
<b>17</b>	21	23	1.1875-18	1.387	35.2	16

**TABLE 2: ENTRY SIZE**

Entry Size	Shell Size Codes	øH ±.015(0.4)		J Closed ±.015(0.4)		K ±.015(0.4)		øL Max		M ±.03(0.8)	
		in	mm	in	mm	in	mm	in	mm	in	mm
<b>02</b>	05-17	.125	3.2	.075	1.9	.490	12.4	.520	13.2	.36	9.1
<b>25</b>	05-17	.156	4.0	.094	2.4	.520	13.2	.550	14.0	.36	9.1
<b>03</b>	06-17	.188	4.8	.113	2.9	.550	14.0	.580	14.7	.36	9.1
<b>35</b>	06-17	.219	5.6	.131	3.3	.580	14.7	.610	15.5	.36	9.1
<b>04</b>	11-17	.250	6.4	.150	3.8	.615	15.6	.645	16.4	.36	9.1
<b>05</b>	07-17	.312	7.9	.188	4.8	.680	17.3	.710	18.0	.36	9.1
<b>06</b>	08-17	.375	9.5	.225	5.7	.740	18.8	.770	19.6	.36	9.1
<b>07</b>	09-17	.438	11.1	.263	6.7	.800	20.3	.830	21.1	.36	9.1
<b>08</b>	10-17	.500	12.7	.300	7.6	.865	22.0	.895	22.7	.36	9.1
<b>09</b>	12-17	.562	14.3	.375	9.5	.990	25.1	1.030	26.2	.42	10.7
<b>10</b>	13-17	.625	15.9	.417	10.6	1.050	26.7	1.090	27.7	.42	10.7
<b>11</b>	14-17	.688	17.5	.459	11.7	1.115	28.3	1.155	29.3	.42	10.7
<b>12</b>	14-17	.750	19.1	.500	12.7	1.175	29.8	1.215	30.9	.42	10.7
<b>13</b>	14-17	.812	20.6	.542	13.8	1.240	31.5	1.280	32.5	.42	10.7
<b>14</b>	16-17	.875	22.2	.583	14.8	1.300	33.0	1.340	34.0	.42	10.7
<b>15</b>	16-17	.938	23.8	.625	15.9	1.365	34.7	1.405	35.7	.42	10.7
<b>16</b>	17	1.000	25.4	.667	16.9	1.425	36.2	1.465	37.2	.42	10.7