

Series 74
**High-Performance Helical Polymer-Core
 Convoluted Tubing Systems**
 Introduction and Quick Selection Guide



High-Performance Helical Convoluted Tubing, Backshells, Fittings and Assemblies

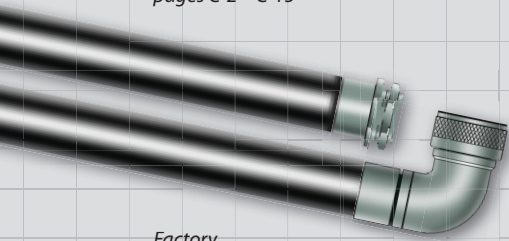
Glenair Series 74 High-Performance Helical Polymer-Core Convoluted Tubing provides a lightweight, durable enclosure for interconnect wiring, with backshells, transitions and a wide range of high-performance convoluted tubing types with and without EMI/RFI braiding and jacketing.

Do-It-Yourself Fittings are the best choice when ease of assembly and installation is a requirement, when prototyping wire-routing systems, or when running convoluted tubing in unpredictable lengths.

Prefer a Turnkey Solution? Factory terminated assemblies offer weight reduction and size savings, as well as highly durable tamper-proof crimp fittings.



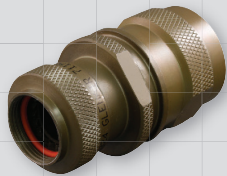
Helical Convoluted
 Tubing configurations,
 pages C-2 – C-15



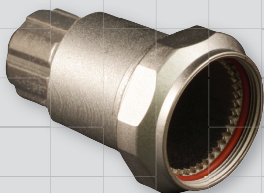
Factory
 Terminated
 Assemblies, p. C-16 - C-17



Easy-to-Assemble
 Hat Trick system,
 pages C-18 – C-29



Super-Durable
 Internal Braid system,
 pages C-30 – C-35



Ultra-Lightweight
 Composite Hummer-Nut
 system, pages C-52 – C-57

Part No.	Description	Page No.
Helical Convoluted Tubing Configurations		
	Configuration Options and Material Properties	C-2 – C-8
120-100	Helical Convoluted Tubing	C-9
121-101	Convoluted Tubing with Braid	C-10
121-102	Convoluted Tubing with 2 Braids	C-11
121-100	Convoluted Tubing with Braid and Jacket	C-12
121-103	Convoluted Tubing with 2 Braids and Jacket	C-13
123-100	Convoluted Tubing with Environmental Jacket	C-14
121-195	Convoluted Tubing with Internal Braid	C-15
Factory Terminated Assemblies		
	Factory Crimp Conduit Assemblies - How To Order	C-16
	Point-to-Point Conduit Assembly basic part numbers	C-17
Easy-to-Install Hat Trick System		
713-355	Convoluted Tubing-to-Connector Backshell, Metal	C-18
713-359	Convoluted Tubing-to-Bulkhead Fitting, Metal	C-20
713-377	Convoluted Tubing-to-Connector Backshell, Composite	C-22
713-378	Convoluted Tubing-to-Bulkhead Fitting, Composite	C-24
713-380	Hat Trick "Y" Transition	C-26
713-381	Hat Trick "T" Transition	C-28
Super-Durable Internal Braid System		
711-150	Convoluted Tubing-to-Connector Backshell	C-30
711-149	Convoluted Tubing-to-Bulkhead Fitting	C-32
711-148	Convoluted Tubing-to-Transition or End Fitting Adapter	C-34
AeroLite System		
712-879	Convoluted Tubing-to-Connector Backshell	C-36
712-880	Convoluted Tubing-to-Bulkhead Fitting	C-38
712-831	Convoluted Tubing-to-Connector Backshell, Composite	C-40
712-848	Convoluted Tubing-to-Bulkhead Fitting, Composite	C-42
Legacy Heavy-Duty Ground Ring System		
712-277	Convoluted Tubing-to-Connector Backshell	C-44
712-389	Convoluted Tubing-to-Bulkhead Fitting	C-46
712-380	Convoluted Tubing-to-Transition or End Fitting Adapter	C-48
712-358	Convoluted Tubing-to-Convoluted Tubing Splice Kit	C-50
Hummer Nut System		
712-178	Convoluted Tubing-to-Connector Backshell	C-52
712-202	Convoluted Tubing-to-Bulkhead Fitting	C-54
712-379	Convoluted Tubing-to-Transition or End Fitting Adapter	C-56
712-419	Convoluted Tubing-to-Connector Backshell, Composite	C-58
712-475	Convoluted Tubing-to-Bulkhead Fitting, Composite	C-60
	Installation Procedures	C-62