

SERIES™ 794 VersaLink

ALSO AVAILABLE UNDER SEPARATE COVER:

Series 794 high-speed, shielded rectangular with VersaLink™ twinax contact technology



A rugged, versatile, multi-port, multi-gigabit connector, the Series 794 with shielded VersaLink twinax contact technology is an ideal rectangular solution for 10Gb Ethernet, 100 Gb Ethernet, USB 3.0, USB 3.2, HDMI, DisplayPort, and SATA applications. Offered in layouts from 1 to 36 high-speed VersaLink modules or in hybrid size #22D contact layouts with 1 to 8 VersaLink shielded twinax pairs. Panel mount options include float mounts, O-rings, EMI springs, and guide pins. Series 794 VersaLink shells are precision-machined aluminum and fully shielded for optimal electromagnetic compatibility.

- **Dual-lobe scoop-proof shells prevent mating damage**
- **Available with optional polarizing keys**
- **Ideal for blind-mate applications**

About Series 794



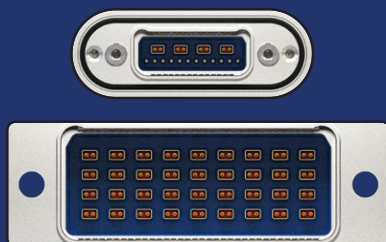
The Series 794 brings high-speed board-to-wire capability to the Glenair Series 79 family of ultraminiature rectangular connectors. The Series 794 is intended for avionics and aerospace equipment exposed to high-vibration and hostile environments.

The 794 supports VersaLink High-Speed twinax contact modules for 40 Gb Ethernet, 100 Gb Ethernet, USB 3.2, HDMI, and other protocols.

Machined aluminum alloy shells feature dual lobes for polarization. Pin contacts are recessed to prevent scooping damage. Discrete crimp contacts conform to M39029 requirements and are rear release.

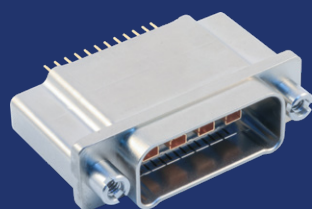
EMI grounding fingers in the receptacle minimize EMI. Fluorosilicone face seals and wire grommets protect from moisture and contamination. Panel mount versions are available with an O-ring—or for improved panel bonding—a metal spring.

Vertical Board mount PCB versions available.



VersaLink twinax

Connectors are available with up to 36 VersaLink pairs and hybrid layouts with size #22D contacts. The Series 794 Size U with 36 ports is the largest connector in the series.

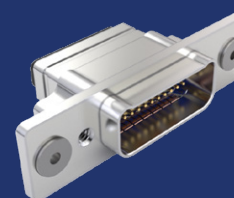


PCB Connectors

Series 794 PCB Plug or Receptacle connectors have straight PC tails. Contacts are non-removable and are epoxy sealed.

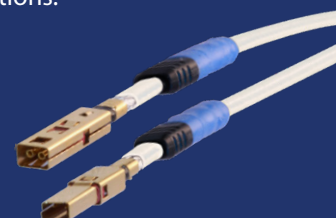
PANEL-MOUNTED CONNECTOR INTERFACE OPTIONS

Environmental O-ring sealing and gold-plated panel spring options are available for Series 794 connectors with panel mount flanges. The spring provides improved electrical bonding. O-ring seal delivers IP67 environmental protection



Blind-Mate Accommodation

Panel mount connectors have threaded mounting holes for easy installation, as well as options for guide pins and float mount hardware for blind-mate applications.



Cable Connectors

VersaLink contacts snap into Series 794 cable connectors and are easily removed with a metal removal tool.

Supported Networking Protocols
10, 25, 40, 50, and 100 Gb Ethernet

Supported Peripheral and Display Protocols

DVI	USB 3.1 Type C
HDMI 2.1	USB 3.2
DisplayPort 2.0	USB4
SATA 3	PCIe 4
USB 3.0	QSFP28

SpeedLine™
Controlled-Impedance Cables

Connector design is optimized for use with Glenair SpeedLine high-speed cabling.