

MICRO-CRIMP RECTANGULAR CONNECTORS

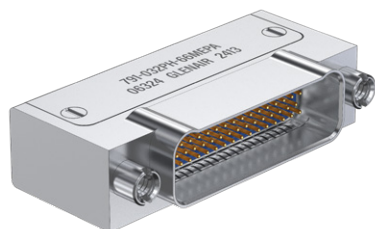
Series 791 Scoop-Proof



791-032

PCB Receptacle, 90° Tails

- ◆ Right angle PCB termination
- ◆ Pin contacts



791-032 receptacle has right angle PC tails for thru-hole printed circuit board termination. Contacts are sealed with epoxy. Machined aluminum shell has integral standoff and threaded holes for attachment to PC board. Fluorosilicone seal provides environmental protection to mating interface. Available in forty insert arrangements with up to 102 contacts. Contact sizes include high-density #23 contacts on .075 inch (1.9mm) centers, #16 contacts, #12 contacts, and #8 contacts.

- Aerospace-grade ultraminiature connector with scoop-proof duo-lobe shell
- Epoxy-sealed right angle terminals with EMI shroud
- 40 insert arrangements with M39029-type contacts
- Environmental

INSERT ARRANGEMENTS

Insert Arrangement	No. of Contacts			
	#23	#16	#12	#8
A-5	5			
B-2P2		2		
B-9	9			
C-13	13			
D-15	15			
D-3P3		3		
D-7P2	5	2		
E-11P2	9	2		
E-19	19			
E-7P3	4	3		
F-14P3	11	3		
F-15P2	13	2		
F-23	23			
F-5P5		5		
G-13P2	11		2	
G-21P1	20		1	
G-3P3			3	
G-33	33			
H-10P4	6		4	
H-29P7	22	7		
H-36P2	34		2	
H-51P1	50		1	
H-54P2	52	2		
H-5P5			5	
H-66	66			
J-17P4	13	4		
J-25P2	23	2		
J-33	33			
J-7P7		7		
K-27P4	23	4		
K-35P2	33	2		
K-43	43			
K-9P9		9		
L-22P4	18		4	
L-48P2	46		2	
L-6P6			6	
L-78	78			
M-17P17		17		
M-102	102			
M-4P4				4

HOW TO ORDER

Sample Part Number		791-032P	G-33	TZ	E	P	C	B
Basic Part Number	791-032P	PCB Receptacle, Straight Tails, Pin Contacts						
Shell Size-Insert Arr.	See “Insert Arrangements” Table							
Shell Finish	M	Electroless Nickel						
	MT	Nickel / PTFE						
	N	Olive Drab Cadmium						
	TZ	Tin-Zinc						
	ZR	Black Zinc-Nickel						
EMI Spring	E	EMI Spring						
	N	No EMI Spring						
Jackpost Option <i>Table 1</i>	N	No Jackposts						
	P	Female Jackposts						
	R1	Rear Panel Mount Jackposts .032 (0.81) Panel Thickness						
	R2	Rear Panel Mount Jackposts .050 (1.27) Panel Thickness						
	R3	Rear Panel Mount Jackposts .062 (1.59) Panel Thickness						
	R4	Rear Panel Mount Jackposts .080 (2.03) Panel Thickness						
	R5	Rear Panel Mount Jackposts .093 (2.36) Panel Thickness						
	R6	Rear Panel Mount Jackposts .125 (3.18) Panel Thickness						
PC Tail Length	A	.125 inch (3.2 mm)						
	B	.250 inch (6.4 mm)						
	C	.375 inch (9.5 mm)						
Polarization Key Option	Enter Letter Designator for Position A, B, C, D, E , or F per Mod Code 555 (see page B-8 for details) Omit for none							

TABLE 1 JACKPOST OPTION

N No Hardware 	P Female Jackpost 	R1 - R6 Rear Panel Jackpost
-----------------------------	---------------------------------	---

RATINGS

- Voltage (DWV): size 23 contacts 750 VAC, size 8, 12 and 16: 1800 VAC
- Current: #23 5A, #16 13A, #12 23A, #8 46A
- Operating temperature: -65 to +150 °C
- Durability: 500 mating cycles
- Shock: 300 g
- Vibration: 20 g random
- Altitude immersion: 75,000 feet
- Ingress protection: IP67

CONSTRUCTION

- Contacts: Copper alloy, gold over nickel finish
- Shell, EMI shroud: Aluminum
- Insulators: High performance thermoplastic
- Face seal: Fluorosilicone/silicone blend
- Encapsulant: Epoxy
- Hardware: Stainless steel

MICRO-CRIMP RECTANGULAR CONNECTORS

Series 791 Scoop-Proof

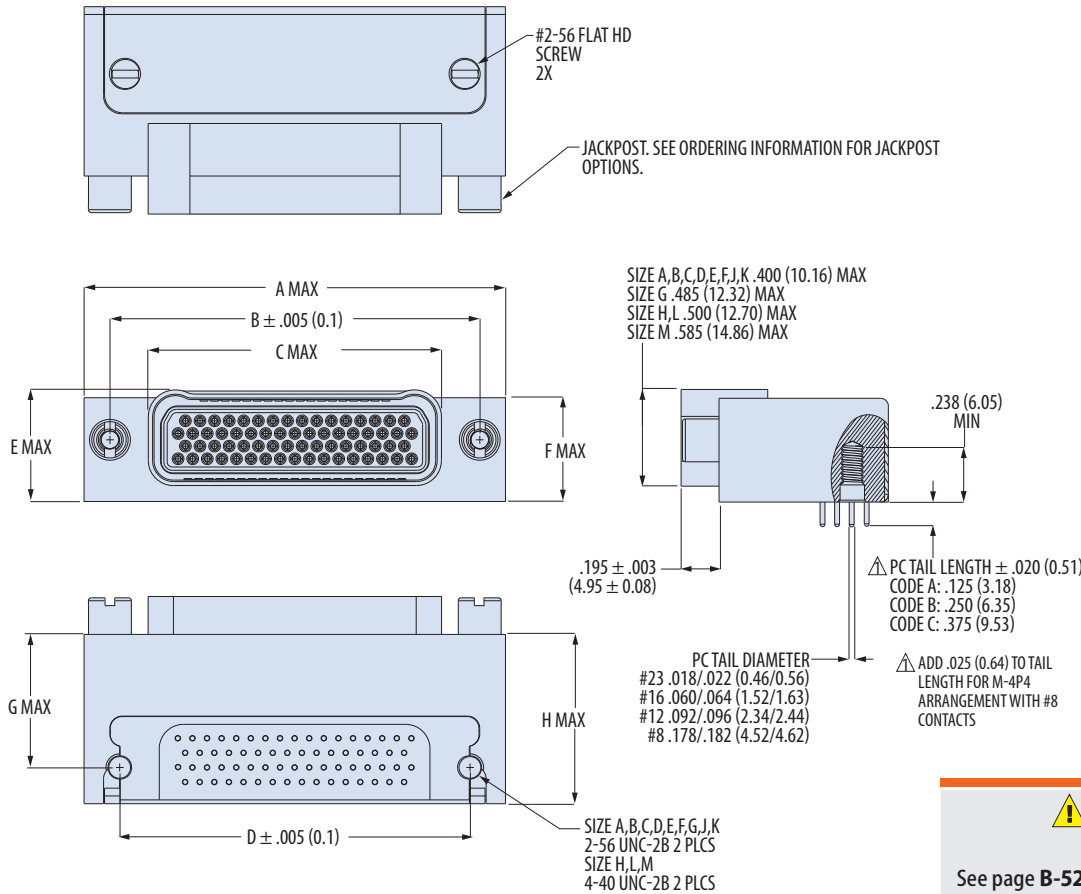
SERIES
791
Scoop-Proof

791-032

PCB Receptacle, 90° Tails

- ◆ Right angle PCB termination
- ◆ Pin contacts

SERIES 791 SCOOP-PROOF



Shell Size	A Max	B ± .005 (0.1)	C Max	D ± .005 (0.1)	E Max	F Max	G Max	H Max
	in	mm	in	mm	in	mm	in	mm
A	.995	25.3	.750	19.1	.490	12.4	.565	14.4
B	1.145	29.1	.900	22.9	.640	16.3	.715	18.2
C	1.295	32.9	1.050	26.7	.790	20.1	.865	22.0
D	1.370	34.8	1.125	28.6	.865	22.0	.965	24.5
E	1.520	38.6	1.275	32.4	1.015	25.8	1.115	28.3
F	1.670	42.4	1.425	36.2	1.165	29.6	1.265	32.1
G	1.630	41.4	1.388	35.3	1.127	28.6	1.215	30.9
H	2.180	55.4	1.900	48.3	1.516	38.5	1.800	45.7
J	2.045	51.9	1.800	45.7	1.540	39.1	1.615	41.0
K	2.420	61.5	2.175	55.2	1.915	48.6	2.015	51.2
L	2.416	61.4	2.136	54.3	1.752	44.5	2.036	51.7
M	2.580	65.5	2.200	55.9	1.815	46.1	2.200	55.9

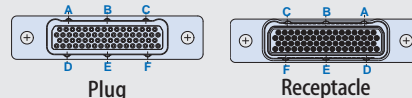
Application Note PCB Footprints

See Section **G** for PC board layouts.

Straight tails: pages **G-1 – G-9**
90° tails: pages **G-10 – G-20**

Application Note Polarization Key Positions

See Mod Code 555 pg. B-8 for details

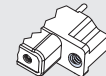


Application Note Panel Cutout

See page **B-52** for recommended panel cutout dimensions for connectors.

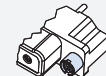
JACKPOST DETAILS

N No Jackpost



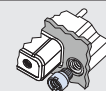
Connector supplied with threaded holes .150 (3.8) minimum depth. Shell sizes A-G, J, K have 6-32 UNC-2B thread, sizes H and L have 8-32 UNC-2B thread. Size M has 10-32 UNF-2B thread.

P Female Jackpost



Non-removable female jackpost. Shell sizes A-G, J, K have 4-40 UNC-2B thread, sizes H and L have 6-32 UNC-2B thread. Size M has 8-32 UNC-2B thread. 300 series stainless steel, passivated.

R1 - R6 Rear Panel Jackposts



For rear panel mounting of connector onto .032 - .125 inch (0.81 - 3.18) thick panels. Install with threadlocking compound. Shell sizes A-G, J, K have 4-40 UNC-2B thread, sizes H and L have 6-32 UNC-2B thread. Size M has 8-32 UNC-2B thread. 300 series stainless steel, passivated. Supplied loosely assembled.