

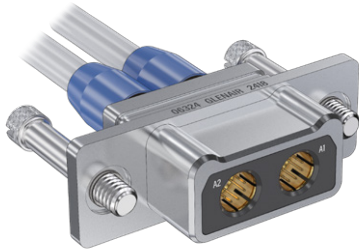
# MICRO-CRIMP RECTANGULAR CONNECTORS

## Series 792 High-Speed



### 792-001 Cable Plug

- ◆ Crimp, rear-release
- ◆ Socket contacts



#### *Twinax, quadrax or El Ochito® contacts.*

792-001 cable plug has size #8 cavities for snap-in high speed data contacts (purchased separately). Combo arrangements have size #23 contacts (included with connector). Keyed inserts and scoop-proof duo-lobe shell provide precise alignment of contacts for problem-free mating. #8-32 screwlocks or jackposts are 300 series stainless steel. Shell has rear groove for attaching backshell.

- Aerospace-grade rectangular connector with high speed size 8 datalink contacts
- 1–9 data ports
- Rugged duo-lobe aluminum shell
- Environmental

#### INSERT ARRANGEMENTS

Thermoplastic Insert	Grounded All-Aluminum	No. of Contacts	
		#8	#23
A-1W1	A-1G1	1	–
A-3W1		1	2
B-23W1		1	22
B-2W2	B-2G2	2	–
B-6W2		2	4
C-24W2		2	22
C-3W3	3G3	3	–
C-9W3		3	6
D-27W3		3	24
D-4W4	D-4G4	4	–
D-12W4		4	8
E-5W5	E-5G5	5	–
E-15W5		5	10
E-45W3		3	42
F-9W9	F-9G9	9	–
F-31W9		9	22

#### #8 SOCKET CONTACTS

#8 Contacts are not included with connector. See Section E for contact ordering information.



Contact Type	Application	Contact Part Number
Diff. Twinax	77 Ohm 100 Ohm	<b>853-075</b>
Quadrax	100BASE-T, ARINC 664	<b>854-048</b>
Octaxial <i>El Ochito®</i>	<b>Ethernet:</b> 1000BASE-T, 10Gb, 40Gb	<b>858-046</b> <b>858-042</b>
	USB 3.0	<b>858-048</b> <b>858-072</b>
	<b>Multi-Gig 100 Ohm:</b> HDMI, DisplayPort, SATA	<b>858-050</b> <b>858-066</b>
Coaxial	50 Ohm	<b>852-148</b>
	75 Ohm	<b>852-150</b>
Power	#8 AWG	<b>850-158</b>

#### HOW TO ORDER

Sample Part Number		792-001S	D-4W4	M	S	B
Basic Part Number	792-001S Cable Plug, Socket Contacts					
Shell Size-Insert Arr.	See "Insert Arrangements" Table					
Shell Finish	<b>M</b> Electroless Nickel <b>MT</b> Nickel / PTFE <b>N</b> Olive Drab Cadmium <b>TZ</b> Tin-Zinc <b>ZR</b> Black Zinc-Nickel					
Hardware Option <i>Table 1</i>	<b>N</b> Thru-Hole <i>No Hardware</i> <b>K</b> Extended Jackscrews <i>Slot head male</i> <b>L</b> Jackscrews <i>Socket head male</i> <b>P</b> Female Jackposts <b>S</b> Screwlocks <i>Socket head male</i> <b>T</b> Extended Screwlocks <i>Slot head male</i>					
Polarization Key Option	Enter Letter Designator for Position <b>A, B, C, D, E, F, G, H, J, or K</b> per Mod Code 1104 (see page C-8 for details) <b>Omit</b> for none					

#### TABLE ONE HARDWARE OPTION

<b>K</b> Extended Jackscrew Slot Head	<b>L</b> Jackscrew Socket Head	<b>P</b> Female Jackpost With Nut, Lockwasher	<b>S</b> Screwlock Socket Head	<b>T</b> Extended Screwlock Slot Head

Screwlocks allow connector to be plugged in before the screws are tightened. Jackscrews must be tightened in order to mate connector.

#### RATINGS

- Voltage (DWV): size 23 contacts 750 VAC
- Current: #23 5A
- Operating temperature: -65 to +150 °C
- Durability: 500 mating cycles
- Shock: 300 g
- Vibration: 20 g random

#### CONSTRUCTION

- Contacts: Copper alloy, gold over nickel finish
- Shell: Aluminum
- Insulators: High performance thermoplastic
- Wire grommet: Fluorosilicone/silicone blend
- Contact retaining clip: Beryllium copper, unplated
- Hardware: Stainless steel

# MICRO-CRIMP RECTANGULAR CONNECTORS

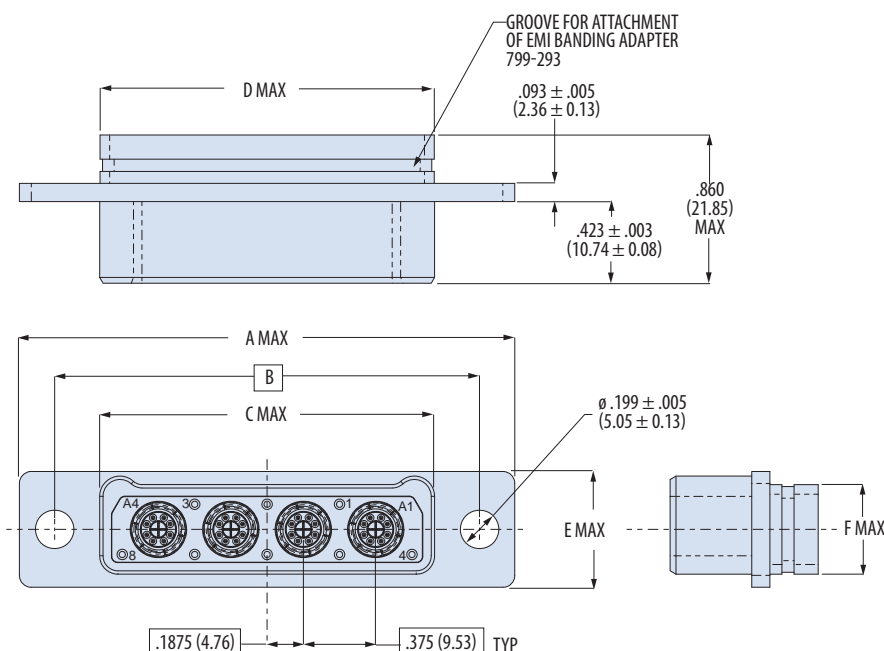
## Series 792 High-Speed



### 792-001 Cable Plug

- ◆ Crimp, rear-release
- ◆ Socket contacts

SERIES 792 HIGH-SPEED



Shell Size	A Max		B ± .005 (0.1)		C Max		D Max		E Max		F Max	
	in	mm	in	mm	in	mm	in	mm	in	mm	in	mm
A	1.455	36.96	1.075	27.31	.615	15.62	.610	15.49	.630	16.00	.469	11.91
B	1.830	46.48	1.450	36.83	.990	25.15	.985	25.02	.630	16.00	.469	11.91
C	2.205	56.01	1.825	46.36	1.365	34.67	1.360	34.54	.630	16.00	.469	11.91
D	2.580	65.53	2.200	55.88	1.740	44.20	1.735	44.07	.630	16.00	.469	11.91
E	2.955	75.06	2.575	65.41	2.115	53.72	2.110	53.59	.630	16.00	.469	11.91
F	2.955	75.06	2.575	65.41	2.115	53.72	2.110	53.59	.990	25.15	.849	21.56

#### SIZE 23 SOCKET CONTACT

Size #23 contacts are bulk packed with connector. Spare contacts are not included and are ordered separately if required. See "Contacts and Tools" section for additional information.

Contact Part No.	Crimp Tool	Positioner
<b>850-164</b>	<b>809-015</b> (M22520/2-01)	<b>859-215</b> (K2105)

#### INSTALLING AND REMOVAL TOOLS

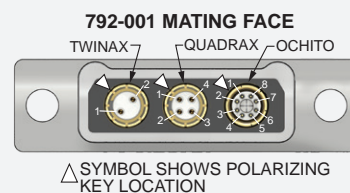
Insertion/ Removal Tool for Size 23 Contact	Removal Tool for Size 8 Contact
<b>809-088</b>	<b>859-049</b> (M22520/14-12)

#### HARDWARE DIMENSIONS

Shell Size	Thread Size
A - F	#8-32
 <b>P</b> Female Jackpost with Hex Nut and Lockwasher	 <b>K T</b> Extended Jackscrew and Screwlock
 <b>L</b> Low Profile Jackscrew Socket Head	 <b>S</b> Low Profile Screwlock Socket Head

#### CONTACT POLARIZING KEY LOCATION

Series 792 size 8 contact cavities have a polarizing keyway. This keyway orients and aligns twinax, quadax and El Ochito® contacts. The connector keyway is rotated 45° from top dead center. This illustration shows the location of the polarizing key and the contact numbers when looking at the mating face of the plug (socket) connector.



#### Application Note

##### Panel Mounting

For panel mounting, specify connector with Hardware Option N (thru-holes). Use rear panel mount jackpost **799-176**. See page F-18 for jackpost ordering information and panel cutout dimensions.

#### Application Note

##### Polarization Key Positions

See Mod Code 1104 pg. C-8 for details

