

MICRO-CRIMP RECTANGULAR CONNECTORS

Series 793 Dual-Bay



793-016

Plug, Cable Mount, Horizontal, Crimp

- ◆ Cable mount
- ◆ Socket contacts
- ◆ Crimp termination



Dual bay cable mount. Space-saving 793-016 connector features high-density, high current and high frequency capabilities, saves size and weight compared to legacy rack-and-panel types. Connector has two inserts. Machined scoop-proof shell has groove for attaching backshell. Size 23 contacts are included with connector; power contacts (#8, #12 or #16) or coaxial RF contacts (#12 and #16) are ordered separately. Connectors become non-scoop proof at parallel horizontal angles of entry from 16°–47°.

- Aerospace-grade high-density rectangular connector with two inserts
- Duo-Lobe polarization
- M39029-type contacts: crimp termination, rear-release

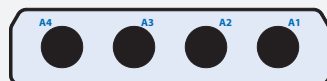
INSERT ARRANGEMENTS

Identification numbers are mating face of plug (socket) connector



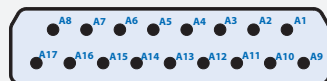
102

102 #23 Contacts



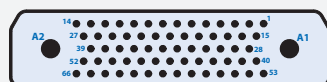
4W4

4 #8 Contacts



17W17

17 #16 Contacts



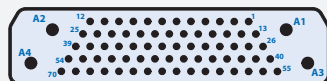
68W2

66 #23, 2 #12 Contacts



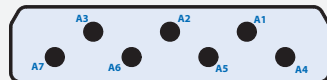
40W4

36 #23, 4 #12 Contacts



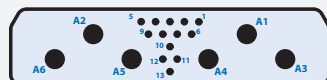
74W4

70 #23, 4 #16 Contacts



7W7

7 #12 Contacts



19W6

13 #23, 6 #12 Contacts

HOW TO ORDER

Sample Part Number		793-016S	A17W17	B102	M	S	B
Basic Part Number	793-016S Plug, Socket Contacts						
Bay "A" Insert Arr.	A102 A40W4	A68W2 A17W17	A7W7 A74W4	A4W4 A19W6			
Bay "B" Insert Arr.	B102 B40W4	B68W2 B17W17	B7W7 B74W4	B4W4 B19W6			
Shell Finish	M Electroless Nickel						
	MT Nickel / PTFE						
	N Olive Drab Cadmium						
	TZ Tin-Zinc						
	ZR Black Zinc-Nickel						
Hardware Option Table 1	N Thru-Hole <i>No Hardware</i>						
	K Extended Jackscrews <i>Slot head male</i>						
	L Jackscrews <i>Socket head male</i>						
	P Female Jackposts						
	S Screwlocks <i>Socket head male</i>						
	T Extended Screwlocks <i>Slot head male</i>						
Polarization Key Option	Enter Letter Designator for Position A, B, C, or D per Mod Code 1502 (see page D-5 for details) Omit for none						

TABLE ONE HARDWARE OPTION

K Extended Jackscrew Slot Head	L Jackscrew Socket Head	P Female Jackpost With Nut, Lockwasher	S Screwlock Socket Head	T Extended Screwlock Slot Head

Screwlocks allow connector to be plugged in before the screws are tightened. Jackscrews must be tightened in order to mate connector.

RATINGS

- Voltage (DWV): size 23 contacts 750 VAC, Size 8, 12 and 16: 1800 VAC
- Current: #23 5A, #16 13A, #12 23A, #8 46A
- Operating temperature: -65 to +150 °C
- Durability: 500 mating cycles
- Shock: 300 g
- Vibration: 20 g random
- Altitude immersion: 75,000 feet
- Ingress protection: IP67

CONSTRUCTION

- Contacts: Copper alloy, gold over nickel finish
- Shell: Aluminum
- Insulators: High performance thermoplastic
- Wire grommet: Fluorosilicone/silicone blend
- Contact retaining clip: Beryllium copper, unplated
- Hardware: Stainless steel

MICRO-CRIMP RECTANGULAR CONNECTORS

Series 793 Dual-Bay

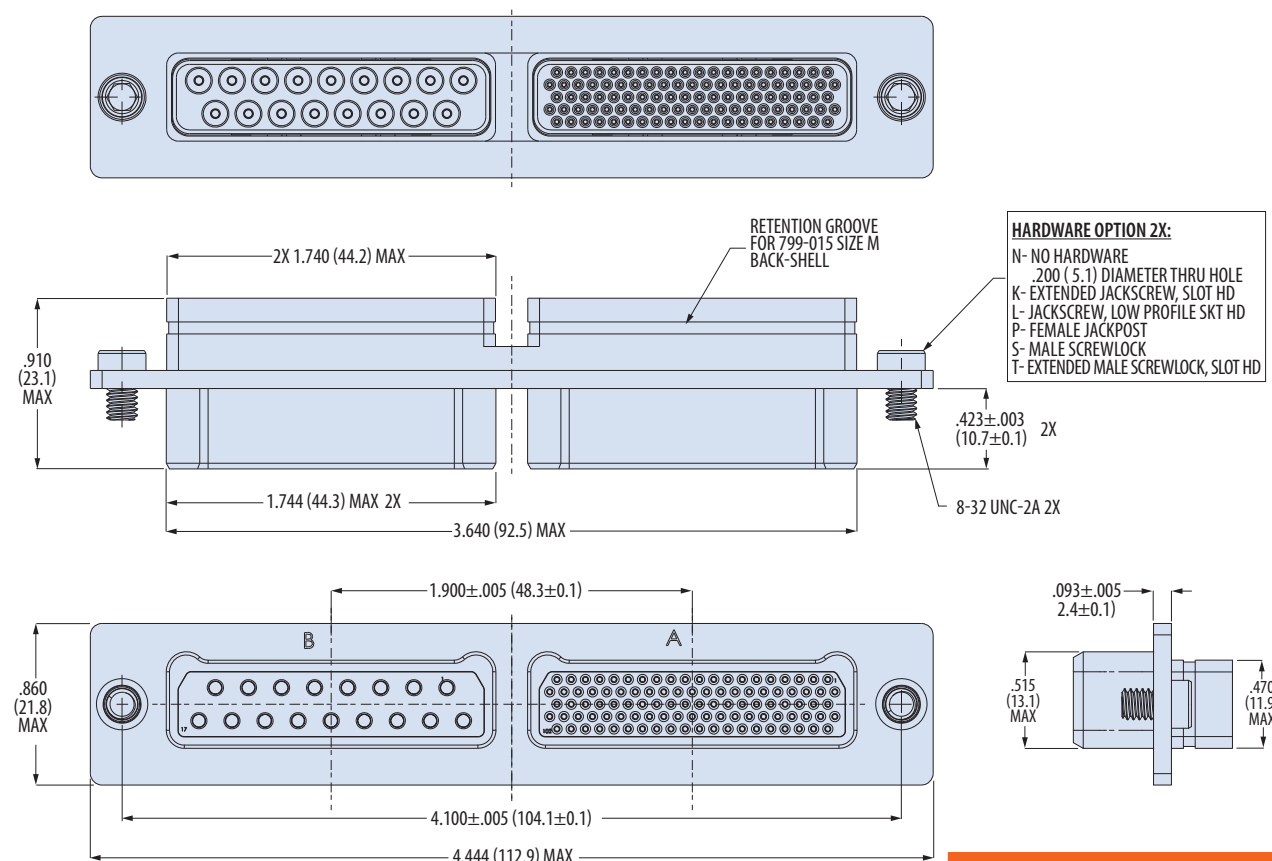
SERIES™
793
Dual-Bay

793-016

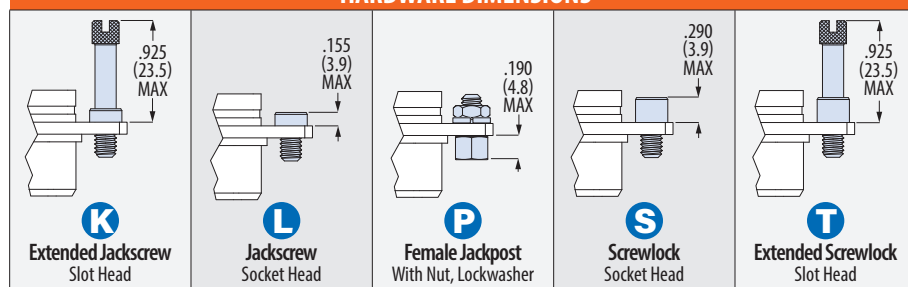
Plug, Cable Mount, Horizontal, Crimp

- ◆ Cable mount
- ◆ Socket contacts
- ◆ Crimp termination

SERIES 793 DUAL-BAY



HARDWARE DIMENSIONS



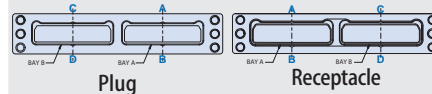
CRIMP CONTACTS

Size 23 contacts are included with connector. Size 16, 12, and 8 contacts are not included and are ordered separately. See "Contacts and Tools" section for crimp tool info and coaxial contact ordering information.	Contact Size	Socket Contact Part No.	AWG Wire Size
	23	809-002	22 – 28
	16	857-448-16	16 – 20
	12	857-448-12	12 – 14
	8	850-138F	8

Application Note

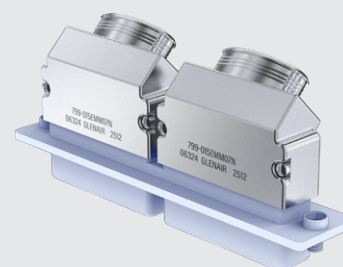
Polarization Key Positions

See Mod Code 1502 pg. D-5 for details



Application Note

EMI Banding Backshell for 793-016 connector



Use backshell part number 799-015 (Size M). Two backshells are required per connector. Two piece backshell has lip to lock into groove on connector. Available in top entry, side entry and 45° entry.