

# MICRO-CRIMP RECTANGULAR CONNECTORS

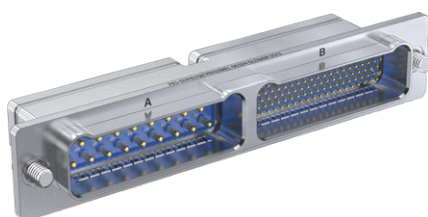
## Series 793 Dual-Bay



### 793-017

### Receptacle, Cable Mount, Horizontal, Crimp

- ◆ Cable mount
- ◆ Pin contacts
- ◆ Crimp termination



**Dual bay cable mount.** Space-saving 793-017 connector features high-density, high current and high frequency capabilities, saves size and weight compared to legacy rack-and-panel types. Connector has two inserts. Machined scoop-proof shell has groove for attaching backshell. Size 23 contacts are included with connector; size 8, 12, and 16 contacts are ordered separately. Connectors become non-scoop proof at parallel horizontal angles of entry from 16°–47°.

- Aerospace-grade high-density rectangular connector with two inserts
- Scoop-proof polarization
- M39029-type contacts: crimp termination, rear-release
- Scoop-proof interface with recessed pins

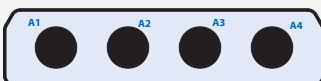
#### INSERT ARRANGEMENTS

Identification numbers are mating face of receptacle (pin) connector



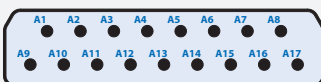
**102**

102 #23 Contacts



**4W4**

4 #8 Contacts



**17W17**

17 #16 Contacts



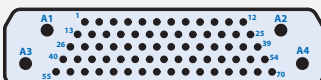
**68W2**

66 #23, 2 #12 Contacts



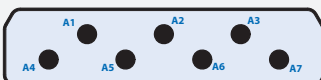
**40W4**

36 #23, 4 #12 Contacts



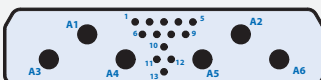
**74W4**

70 #23, 4 #16 Contacts



**7W7**

7 #12 Contacts



**19W6**

13 #23, 6 #12 Contacts

#### HOW TO ORDER

Sample Part Number		793-017P	A4W4	B102	M	E	S	B
Basic Part Number	793-017P	Receptacle, Pin Contacts						
Bay "A" Insert Arr.	A102 A4W4 A17W17	A68W2 A40W4 A74W4	A7W7 A19P6					
Bay "B" Insert Arr.	B102 B4W4 B17W17	B68W2 B40W4 B74W4	B7W7 B19P6					
Shell Finish	M	Electroless Nickel						
	MT	Nickel / PTFE						
	N	Olive Drab Cadmium						
	TZ	Tin-Zinc						
	ZR	Black Zinc-Nickel						
EMI Springs	E	EMI Springs						
	N	No EMI Springs						
Hardware Option Table 1	N	Thru-Hole <i>No Hardware</i>						
	K	Extended Jackscrews <i>Slot head male</i>						
	L	Jackscrews <i>Socket head male</i>						
	P	Female Jackposts						
	S	Screwlocks <i>Socket head male</i>						
	T	Extended Screwlocks <i>Slot head male</i>						
Polarization Key Option	Enter Letter Designator for Position <b>A, B, C</b> , or <b>D</b> per Mod Code 1502 (see page D-5 for details) <b>Omit</b> for none							

#### TABLE ONE HARDWARE OPTION

<b>K</b> Extended Jackscrew Slot Head	<b>L</b> Jackscrew Socket Head	<b>P</b> Female Jackpost With Nut, Lockwasher	<b>S</b> Screwlock Socket Head	<b>T</b> Extended Screwlock Slot Head

#### RATINGS

- Voltage (DWV): size 23 contacts 750 VAC, Size 8, 12 and 16: 1800 VAC
- Current: #23 5A, #16 13A, #12 23A, #8 46A
- Operating temperature: -65 to +150 °C
- Durability: 500 mating cycles
- Shock: 300 g
- Vibration: 20 g random
- Altitude immersion: 75,000 feet
- Ingress protection: IP67

#### CONSTRUCTION

- Contacts: Copper alloy, gold over nickel finish
- Shell: Aluminum
- Insulators: High performance thermoplastic
- Wire grommet, face seal: Fluorosilicone/silicone blend
- Contact retaining clip: Beryllium copper, unplated
- Hardware: Stainless steel

# MICRO-CRIMP RECTANGULAR CONNECTORS

## Series 793 Dual-Bay

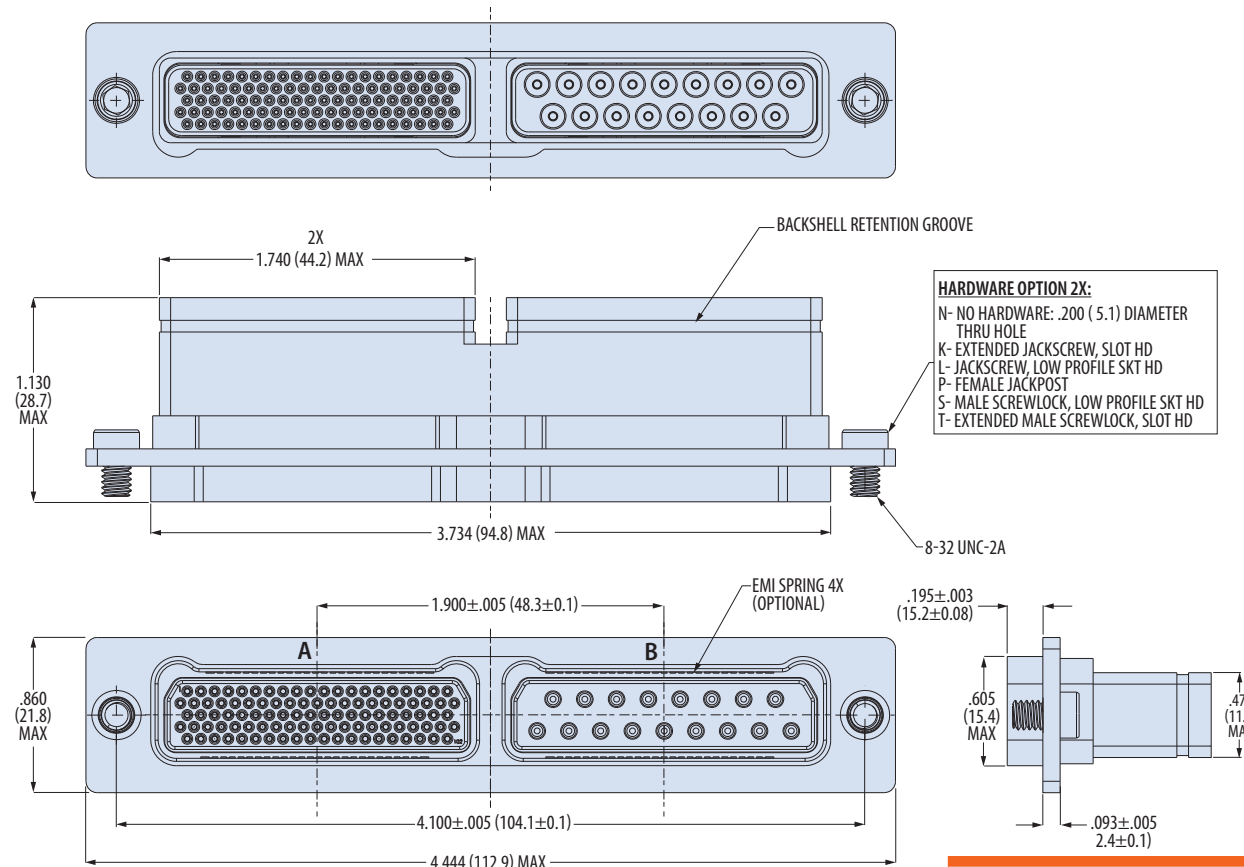
**SERIES™**  
**793**  
Dual-Bay

### 793-017

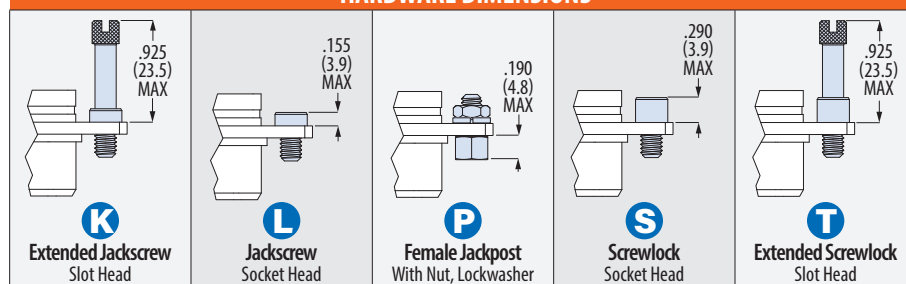
Receptacle, Cable Mount, Horizontal, Crimp

- ◆ Cable mount
- ◆ Pin contacts
- ◆ Crimp termination

SERIES 793 DUAL-BAY



#### HARDWARE DIMENSIONS



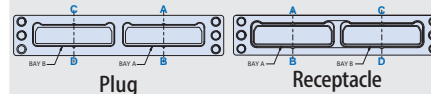
#### CRIMP CONTACTS

Size 23 contacts are included with connector. Size 16, 12, and 8 contacts are not included and are ordered separately. See "Contacts and Tools" section for crimp tool info and coaxial contact ordering information.	Contact Size	Pin Contact Part No.	AWG Wire Size
	23	<b>809-001</b>	22 – 28
	16	<b>809-110</b> (M39029/58-364)	16 – 20
	12	<b>809-112</b> (M39029/58-365)	12 – 14
	8	<b>850-014F</b>	8

#### Application Note

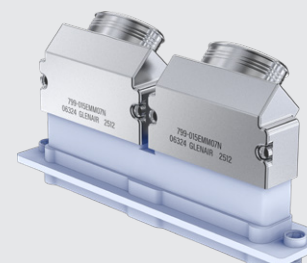
##### Polarization Key Positions

See Mod Code 1502 pg. D-5 for details



#### Application Note

##### EMI Banding Backshell for 793-017 connector



Use backshell part number **799-015** (Size M). Two backshells are required per connector. Two piece backshell has lip to lock into groove on connector. Available in top entry, side entry and 45° entry.