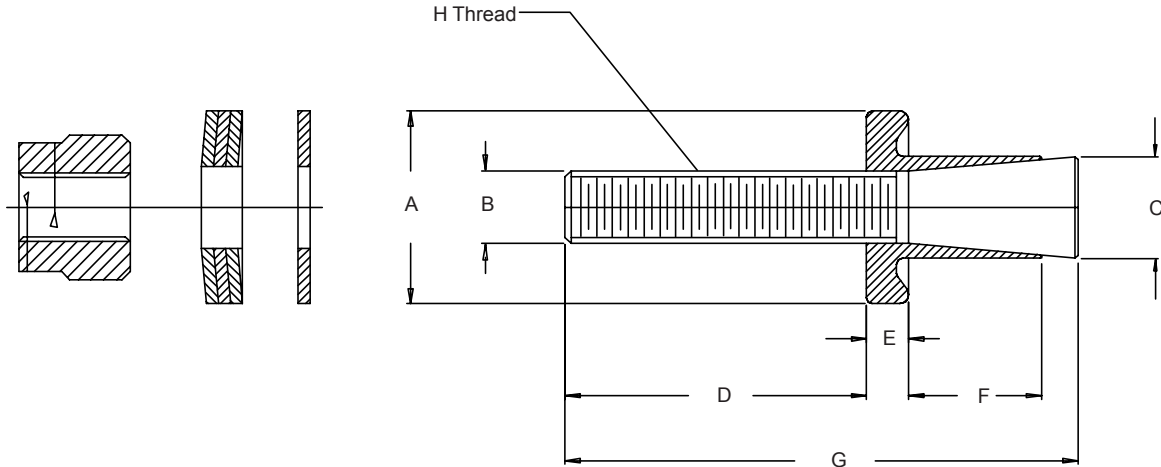


687-481
UNC Thread GroundControl Earth Bonds
For Steel and Stainless Steel Plate



687-481 - 08

Product Series

Dash Number

- 08 = 1/4" Thread for Thin Plate
- 09 = 1/4" Thread for Thick Plate
- 10 = 3/8" Thread for Thin Plate
- 11 = 3/8" Thread for Thick Plate

Specifications

Dash Number Dimension/Characteristic	Thin Plate		Thick Plate	
	Part # -08	Part # -10	Part # -09	Part # -11
A		.984 (25.0)		.984 (25.0)
B (Major Diameter)	.250 (6.4)	.375 (9.5)	.250 (6.4)	.375 (9.5)
C		.748 (19.0)		.531 (13.5)
D (After Crimping)	.984 (25.0)	1.181 (30.0)	.984 (25.0)	1.181 (30.0)
E		.217 (5.5)		.138 (3.5)
F	.177 (4.5)	.177 (4.5)	.433 (11.0)	.433 (11.0)
G		1.693 (43.0)		1.791 (45.5)
H Thread	1/4"	3/8"	1/4"	3/8"
Drilling Diameter ± .004 (.1)		.752 (19.1)		.535 (13.6)
Hydraulic Setting Tool	600-120	600-123	600-120	600-123
Torque Value	8.0 Nm	34 Nm	8.0 Nm	34 Nm
Use with Plate Thickness:				
Minimum	.059 (1.5)	.078 (2.0)	.158 (4.0)	.158 (4.0)
Maximum		.158 (4.0)		unlimited

1. Metric dimensions (mm) are indicated in parentheses.
2. Aluminum plate versions are also available, consult factory for product information.