

SUPERNINE MIL-DTL-38999 SERIES III TYPE ARINC 801 Optical Termini and Connectors



180-179 Jam Nut Mount Receptacle, .250 Inch Max Panel Thickness

ARINC 801



Tight-tolerance MIL-DTL-38999 Series III type Jam Nut Receptacles. Compatible with Size 16 snap-in, rear-release ARINC 801 genderless termini (Glenair series 181-076). Precision-machined insert ensures optimum optical fiber alignment and low dB data loss performance. Triple-start stub ACME threads for fast mating and robust anti-decoupling. The ARINC 801 fiber optic system leverages D38999 mechanical and environmental design elements including mating interface, accessory attachment interface, ratcheting coupling nut, polarization keyways, O-ring seals, panel cutouts, and more. Connector shell materials include aluminum alloy, composite thermoplastic, stainless steel, and marine bronze. Keyed polarization for mis-mate protection. Available insert arrangements support from two to 32 singlemode and multimode termini.

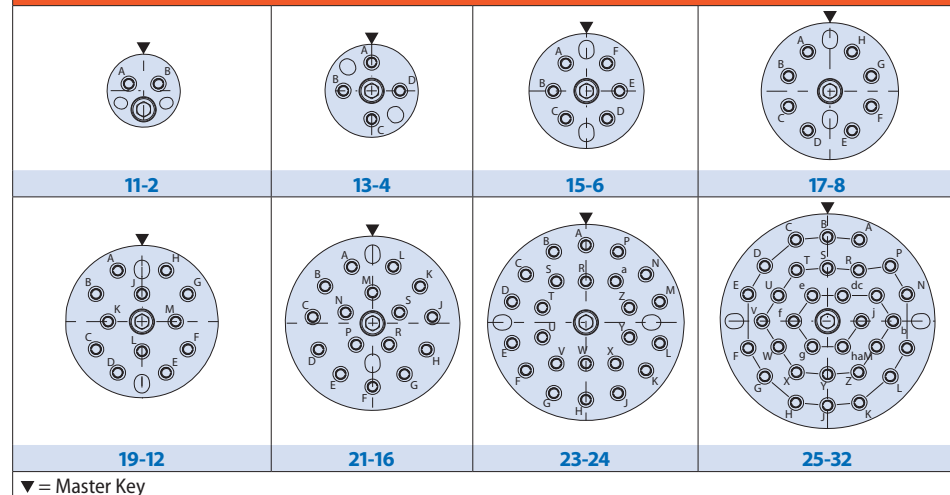
MATERIAL/FINISH NOTES

- Jam nut for composite receptacle: Al Alloy / See table
- Inserts: Al Alloy / Anodize
- Inserts for composite connector: Composite or Al Alloy – MFR's Option
- Seals: Fluorosilicone
- Hardware: Stainless steel / passivate

HOW TO ORDER

Sample Part Number	180-179	NF	08	17-8	N
Fiber Optic connector	ARINC 801, MIL-DTL-38999 Series III Type				
Material/Finish Code	See Material/Finish table				
Connector Style	08 = Receptacle, jam nut mount				
Shell Size - Insert Arrangement	See Shell Size / Contact Arrangements table				
Alternate Key Position per MIL-DTL-38999 Series III	A, B, C, D, E, N = Normal, omit for universal key				

SHELL SIZE / CONTACT ARRANGEMENTS (FACE OF RECEPTACLE INSERT)



MATERIAL AND FINISH

Code	Material	Finish Description
M	Aluminum Alloy	Electroless Nickel
ME		Electroless Nickel
MT		Nickel-PTFE, Gray
NF		Cadmium, Olive Drab
TZ		Tin-Zinc, Bronze-Gold
ZN		Zinc-Nickel, Olive Drab
ZR	Stainless Steel	Zinc-Nickel, Black (RoHS)
MS		Electroless Nickel
ZL		Electro-Deposited Nickel
ZI		Passivate
AB	Marine Bronze	No Plating

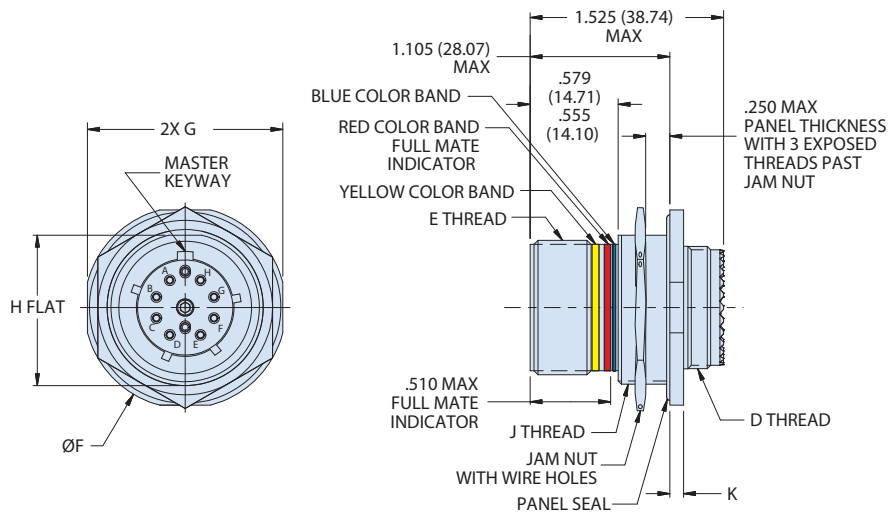
NOTES

- Universal connectors are intended for use in testing facilities only and should be highly evaluated before consideration in another environment.
- Receptacle connector with universal key polarization contains all key way polarizations (A, B, C, D, E, N) which may have overlap in adjacent minor key ways.
- Plug connector with universal polarization contains master key only.
- Blue color band indicates rear release retention system.
- For dummy terminus, see Glenair 181-128.
- Insert/extraction tool: 809-131 (M81969/14-03).

180-179 Jam Nut Mount Receptacle, .250 Inch Max Panel Thickness

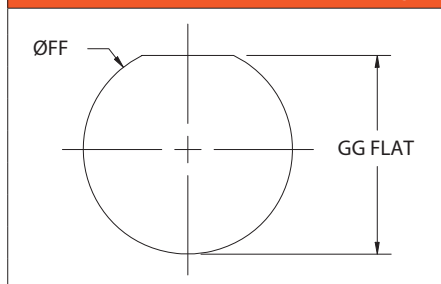
ARINC 801

JAM NUT MOUNT RECEPTACLE DIMENSIONS



Shell Code	Shell Size	E Thread	Ø F	G	H	J Thread	D Thread	K
B	11	.7500-1P-.3L-TS-2A	1.386 (35.20) 1.362 (34.59)	1.268 (32.21) 1.236 (31.39)	.755 (19.18) .745 (18.92)	M20 X 1.0-6g 0.100R	M15 X 1.0-6g 0.100R	.123 (3.12) .083 (2.11)
C	13	.8750-1P-.3L-TS-2A	1.512 (38.40) 1.488 (37.80)	1.390 (35.31) 1.358 (34.49)	.942 (23.93) .932 (23.67)	M25 X 1.0-6g 0.100R	M18 X 1.0-6g 0.100R	
D	15	1.0000-1P-.3L-TS-2A	1.638 (41.61) 1.614 (41.00)	1.516 (38.51) 1.484 (37.69)	1.066 (27.08) 1.056 (26.82)	M28 X 1.0-6g 0.100R	M22 X 1.0-6g 0.100R	
E	17	1.1875-1P-.3L-TS-2A	1.764 (44.81) 1.740 (44.20)	1.642 (41.71) 1.610 (40.89)	1.191 (30.25) 1.181 (30.00)	M32 X 1.0-6g 0.100R*	M25 X 1.0-6g 0.100R	
F	19	1.2500-1P-.3L-TS-2A	1.949 (49.50) 1.925 (48.90)	1.827 (46.41) 1.795 (45.59)	1.316 (33.43) 1.306 (33.17)	M35 X 1.0-6g 0.100R	M28 X 1.0-6g 0.100R	.153 (3.89) .114 (2.90)
G	21	1.3750-1P-.3L-TS-2A	2.075 (52.71) 2.051 (52.10)	1.953 (49.61) 1.921 (48.79)	1.441 (36.60) 1.431 (36.35)	M38 X 1.0-6g 0.100R	M31 X 1.0-6g 0.100R	
H	23	1.5000-1P-.3L-TS-2A	2.201 (55.91) 2.177 (55.30)	2.079 (52.81) 2.047 (51.99)	1.566 (39.78) 1.556 (39.52)	M41 X 1.0-6g 0.100R	M34 X 1.0-6g 0.100R	
J	25	1.6250-1P-.3L-TS-2A	2.323 (59.00) 2.299 (58.39)	2.205 (56.01) 2.173 (55.19)	1.691 (42.95) 1.681 (42.70)	M44 X 1.0-6g 0.100R	M37 X 1.0-6g 0.100R	

JAM NUT MOUNT PANEL CUT-OUT



Shell Code	Shell Size	Ø FF	GG Flat
B	11	0.835 (21.21), 0.825 (20.96)	0.771 (19.58), 0.761 (19.33)
C	13	1.020 (25.91), 1.010 (25.65)	0.955 (24.26), 0.945 (24.00)
D	15	1.145 (29.08), 1.135 (28.83)	1.085 (27.56), 1.075 (27.30)
E	17	1.270 (32.26), 1.260 (32.00)	1.210 (30.73), 1.200 (30.48)
F	19	1.395 (35.43), 1.385 (35.18)	1.335 (33.91), 1.325 (33.65)
G	21	1.520 (38.61), 1.510 (38.35)	1.460 (37.08), 1.450 (36.83)
H	23	1.645 (41.78), 1.635 (41.53)	1.585 (40.26), 1.575 (40.00)
J	25	1.770 (44.96), 1.760 (44.70)	1.710 (43.43), 1.700 (43.18)