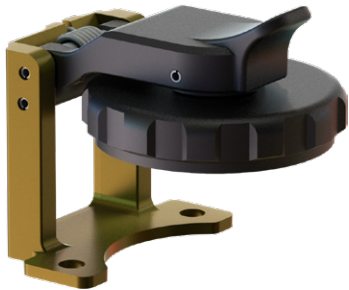


# 667-448 ProSeal™ Threaded-Closure Seal, Full Environmental

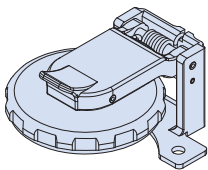


### FEATURES

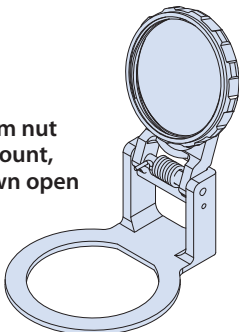
- Threaded closure
- Full environmental protection
- Self-aligning
- Positive spring-action in closed position. Locks open at approximately 105° from receptacle face.

### MATERIAL / FINISH

- Cover, Lever Arm, Gimbal - Thermoplastic / Black
- Spring / Pin / Rivet - 300 Series SST / Passivate
- Sleeve - Delrin
- Gasket - Silicone

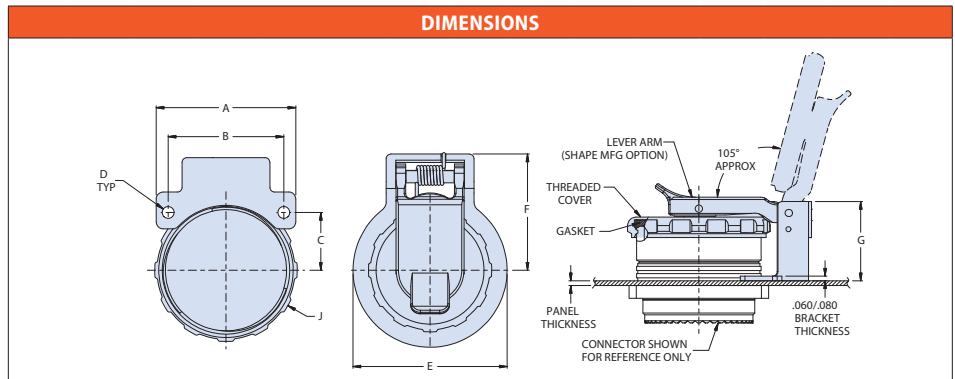


Wall mount, shown closed



Jam nut mount, shown open

HOW TO ORDER					
<b>Sample Part Number</b>	<b>667-448</b>	<b>NF</b>	<b>17</b>	<b>T1</b>	<b>J</b>
<b>Series</b>	ProSeal protective cover for D38999 Series III connectors				
<b>Material / Finish</b>	See Material and Finish Table				
<b>Shell Size</b>	See Dimensions table				
<b>Panel Thickness</b>	See Panel Thickness table				
<b>Type of Mounting</b>	<b>J</b> = Jam Nut Mount Receptacle <b>W</b> = Wall Mount Receptacle				



Shell Size	A Dim max		B Dim		C Dim		D ±.008 (.20)		E ±.031 (.79)		F Dim max		J Dia max	
	in	mm	in	mm	in	mm	in	mm	in	mm	in	mm	in	mm
09	0.937	23.80	0.719	18.26	0.360	9.14	0.128	3.25	1.031	26.19	.841	21.36	.872	22.15
11	1.031	26.19	0.812	20.62	0.406	10.31	0.128	3.25	1.125	28.58	.903	22.94	.988	25.10
13	1.126	28.60	0.906	23.01	0.453	11.51	0.128	3.25	1.375	34.93	1.028	26.11	1.129	28.68
15	1.220	30.99	0.969	24.61	0.485	12.32	0.128	3.25	1.560	39.62	1.113	28.27	1.280	32.51
17	1.311	33.30	1.062	26.97	0.531	13.49	0.128	3.25	1.625	41.28	1.149	28.18	1.441	36.60
19	1.437	36.50	1.156	29.36	0.578	14.68	0.128	3.25	1.750	44.45	1.365	34.67	1.499	38.07
21	1.563	39.70	1.250	31.75	0.625	15.88	0.128	3.25	2.000	50.80	1.429	36.30	1.630	41.40
23	1.689	42.90	1.375	34.93	0.688	17.48	0.154	3.91	2.150	54.61	1.491	37.87	1.755	44.58
25	1.841	46.76	1.500	38.10	0.750	19.05	0.154	3.91	2.218	56.34	1.656	42.06	1.880	47.75

MATERIAL AND FINISH		
Code	Material	Finish Description
M*	Aluminum Alloy	Electroless Nickel
MA		Electroless Nickel, Matte
ME		Electroless Nickel
MT		Nickel-PTFE, Gray
NF		Cadmium, Olive Drab
TZ		Tin-Zinc, Bronze-Gold
ZN		Zinc-Nickel, Olive Drab
ZNU		Zinc-Nickel, Black
ZR		Zinc-Nickel, Black (RoHS)
XM		Composite
XMT	Nickel - PTFE, Grey	
XW	Cadmium, Olive Drab	
XZN	Zinc-Nickel, Black	
MS	Stainless Steel	Electroless Nickel
ZL		Electro-Deposited Nickel
ZI		Passivate
AB	Marine Bronze	No Plating

\*Inactive for new design. Use "ME" finish.

PANEL THICKNESS							
Dash No.	Panel Thickness* ±.030 (.76)		Shell Size	G ± .06			
	in	mm		Jam Nut Mount		Wall Mount	
				in	mm	in	mm
T0	.000	.00	09-19	N/A	N/A	1.039	26.39
			21-25	N/A	N/A	1.094	27.79
T1	.062	1.57	09-19	1.041	26.44	0.977	24.82
			21-25	1.126	28.60	1.032	26.21
T2	.125	3.18	09-19	0.979	24.87	0.915	23.24
			21-25	1.064	27.03	0.970	24.64

\*Jam nut mount is not available with panel thickness T0

SuperNine® MIL-DTL-38999 Type