

Series 79 Mil-Grade Miniature Rectangular Connectors
183-021 expanded keying positions and #4-40 UNC jackscrew

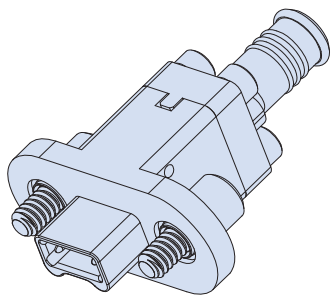
PRIZM® MT and MT Elite®



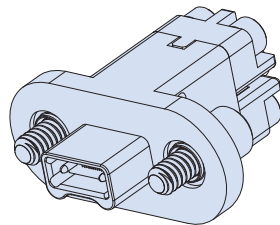
MATERIAL/FINISH NOTES

- Mounting hardware: stainless steel / passivated
- EMI O-ring: conductive fluorosilicone Standard O-ring: fluorosilicone/silicone blend.
- Additional materials, finishes, connector configurations (**dual** and quad layouts), and hardware options are available, consult factory.
- Connectors supplied without MT ferrule kit, purchase separately per P/N 181-133 or 181-150

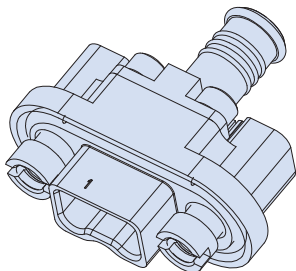
HOW TO ORDER	
Sample Part Number	183-021 ME -06 -L -1 -A13
Basic Number	Series 79 Single MT Fiber Optic Connector
Material / Finish	ME = Al Alloy / Electroless Nickel MT = Al Alloy / Nickel PTFE ZR = Al Alloy / Zinc Nickel, Black NF = Al Alloy / Cadmium, O.D. Z1 = Stainless Steel / Passivate
Connector Type	-06 = Plug (used with male MT ferrule) -07 = Receptacle (used with female MT ferrule) -S7 = Receptacle with EMI O-ring (used with female MT ferrule)
Mounting Hardware	Hardware for PLUGS Rear Panel Mount Jackposts for RECEPTACLES: -L = Hex Head Jackscrew, non-removable -B = Thru-Hole -X = for .031" panel thickness -W = for .047" panel thickness -V = for .062" panel thickness -T = for .094" panel thickness -R = for .080" panel thickness (panel thickness dims ±.002")
Retaining Plate / Banding Platform	-1 = 12 or 24 channel without banding porch -2 = 12 or 24 channel with banding porch -N = No Retaining Plate (For use with standalone retaining plate) See Dwg. 189-168 for various retaining plate designs See Dwg. 189-177 for retaining plate used with PRIZM-MT on Jacketed Cable
Polarization Key Position	See Polarized Keying Positions table -U = Universal position for Receptacle only Omit for no Polarization Key. See table.



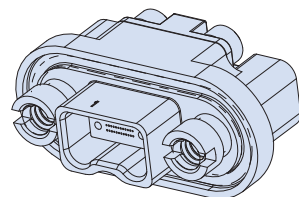
Plug with Banding Porch



Plug without Banding Porch

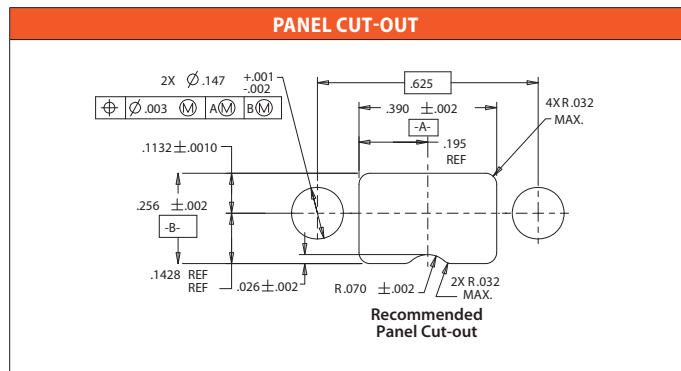


Receptacle with Banding Porch

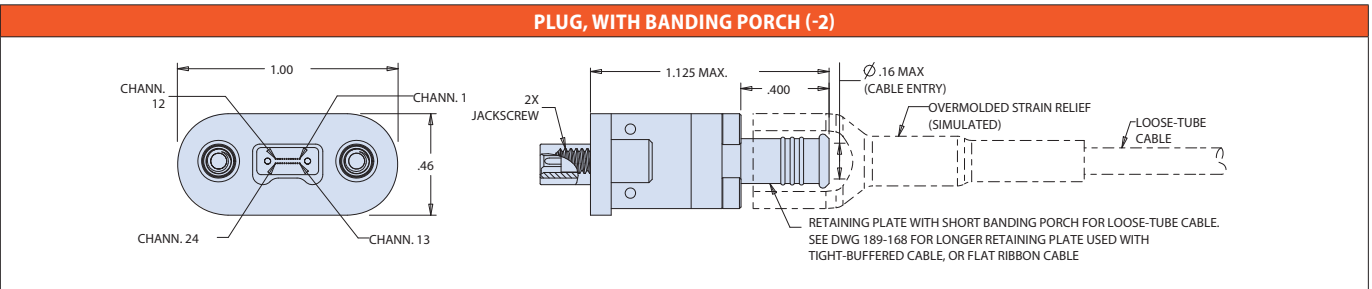
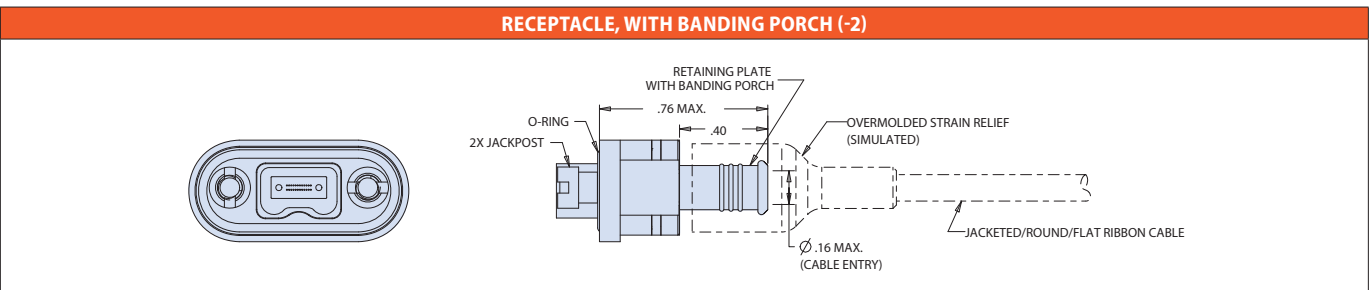
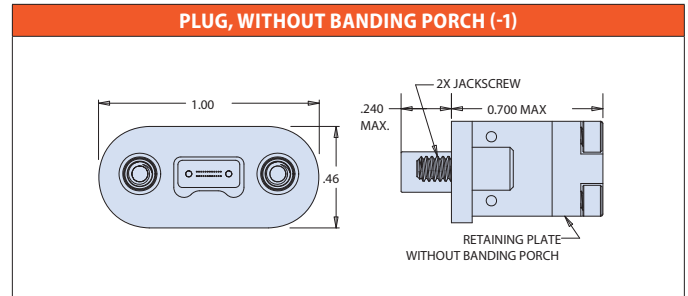
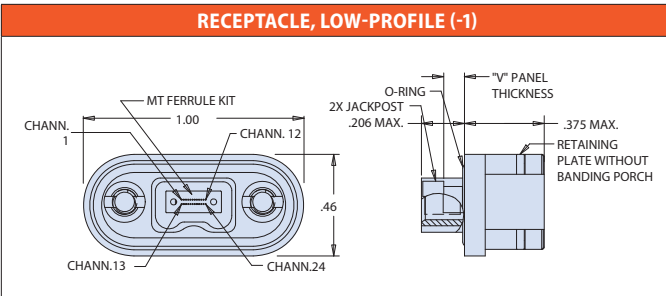


Receptacle without Banding Porch

ADDITIONAL COMPONENTS	
181-133 or 181-150 MT Ferrule Kit	189-172 Dust Cap
601-500 or 601-501 Band-Master ATS® Nano Band for shield termination	189-168 or 189-177 Various Retaining Plate Designs



Series 79 Mil-Grade Miniature Rectangular Connectors
183-021 expanded keying positions and #4-40 UNC jackscrew



POLARIZATION KEY POSITIONS

				(Omit) No Polarization Key, Plug			
				-U Universal Key Receptacle			