

Rectangular PC-tail connectors potted, sealed, and conformal-coating compatible

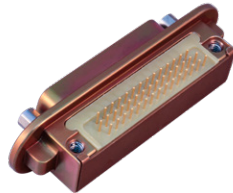
SERIES 28 HIPER-D M24308 HIGH-PERFORMANCE ENVIRONMENTAL PCB CONNECTORS



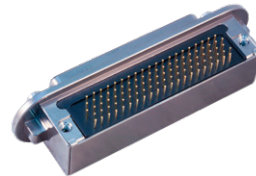
280-022
straight PC tail
pin connector



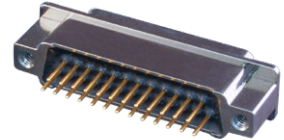
280-023
straight PC tail
socket connector



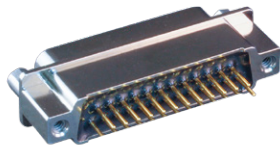
280-024
right-angle PC tail
pin connector



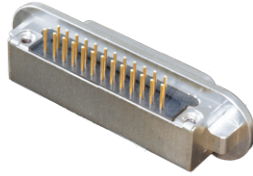
280-025
right-angle PC tail
socket connector



280-026
straight PC tail
pin connector, low-profile



280-027
straight PC tail
socket connector, low-profile



280-028
right-angle PC tail
pin connector, low-profile



280-029
right-angle PC tail
socket connector, low-profile



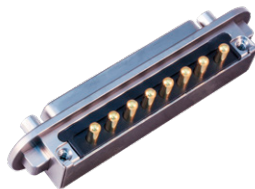
280-050
combo straight PC tail
pin connector



280-051
combo straight PC tail
socket connector



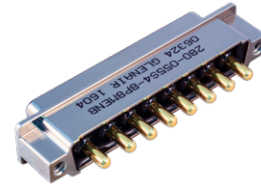
280-052
combo right-angle PC tail
pin connector



280-053
combo right-angle PC tail
socket connector



280-054
combo straight PC tail
pin connector, low-profile

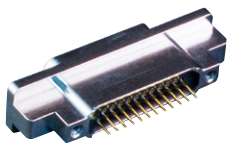


280-055
combo straight PC tail
socket connector, low-profile



280-056
combo right-angle PC tail
pin connector, low-profile

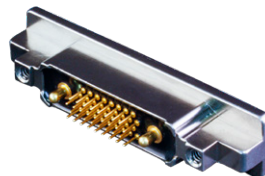
SERIES 79 HIGH-PERFORMANCE MICRO-CRIMP ENVIRONMENTAL PCB CONNECTORS



790-028
straight PC tail
panel receptacle



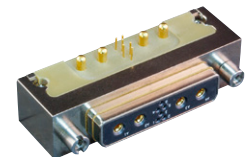
790-043
straight PC tail
free-standing receptacle



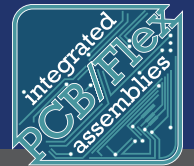
790-029
straight PC tail
panel plug



790-044
straight PC tail
free-standing plug

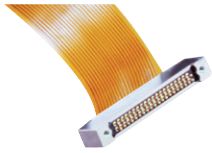


790-042
Right angle PCB
panel-mount hybrid coax

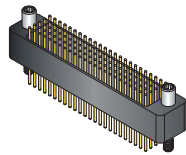


Rectangular PC-tail connectors potted, sealed, and conformal-coating compatible

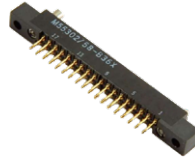
ALPHALINK • SERIES 791 • SERIES 792 HIGH-PERFORMANCE RECTANGULAR PCB ENVIRONMENTAL CONNECTORS



171-134
AlphaLink SL connector with
spring-loaded contacts



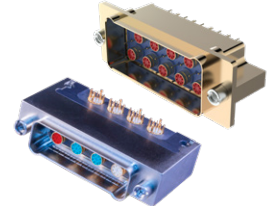
GSTT-PF
HD Stacker
top-of-stack flex



GTBA/GTBB-SF
MIL-DTL-55302 type
flex vertical PCB

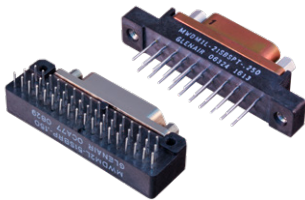


791-015/-011
Series 791 straight and 90°
scoop-proof panel-mount
with grounding fingers

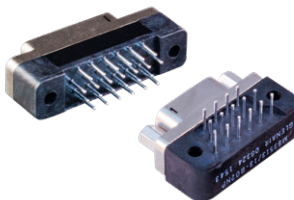


792-006, -010
Straight and 90°
high-speed EI Ochito

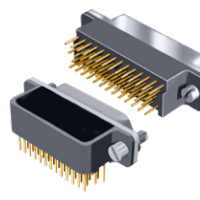
MIL-DTL-83513 MICRO-D AND HIGH-SPEED MICRO-D ENVIRONMENTAL PCB CONNECTORS



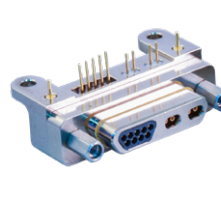
MWDM-B
MWDM-BR
vertical and 90° mount
thru-hole PCB



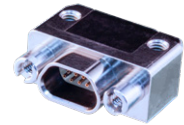
MWDM-CBS
MWDM-CBR
vertical and 90° mount
thru-hole condensed PCB



GMR75
GMR75C
Condensed board, .075" pitch
vertical and 90° PCB

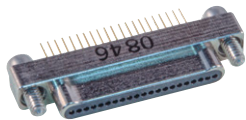


GHS4-M
VersaLink
high-speed Micro-D
right angle PCB

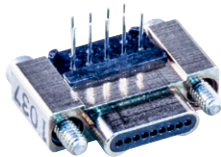


GHSM-HBR
High-Speed Micro-D
right angle PCB

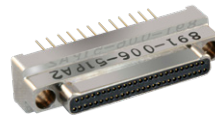
MIL-DTL-32139 NANOMINIATURE AND GMMD ENVIRONMENTAL PCB CONNECTORS



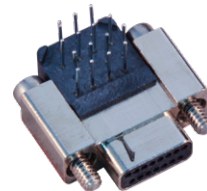
890-006/-007
single-row vertical PCB
plugs / receptacles



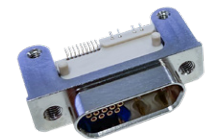
890-008/-009
single-row right angle PCB
plugs / receptacles



891-006/-007
dual-row vertical PCB
plugs / receptacles



891-008/-009
dual-row right angle PCB
plugs / receptacles

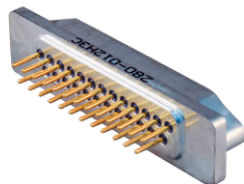


GMMD
high-speed micro with nano
TwistPin contacts

HERMETIC RECTANGULAR GLASS-TO-METAL SEAL PCB CONNECTORS



790-066
Series 79
hermetic PCB connectors



280-012H
HiPer-D
hermetic PCB connectors



177-140H
Micro-D solder-mount
hermetic PCB connectors



177-705H
Micro-D rear panel-mount
hermetic PCB connectors



QPL M24308/9
D-Subminiature straight
thru-hole PCB hermetic