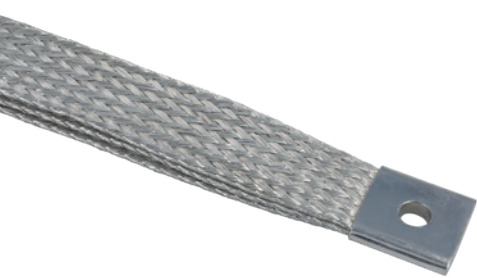


107-435 Triple-Layer Flexible Braided Busbar



| HOW TO ORDER | | | | | | | |
|---------------------|---|---|-----|---|---|----|---|
| Sample Part Number | 107-435 | A | 781 | B | F | -6 | S |
| Product Series | Busbar Ground Strap, Triple Layer | | | | | | |
| Material Code | A = Copper / Tin plated B = Copper / Silver plated C = Copper / Nickel plated D = Stainless Steel | | | | | | |
| Size Code | 781 – 3000, See Dimensions Tables | | | | | | |
| Lug 1 Hole | A – Q, See Table. If two different sized lug holes are required, specify smaller lug hole in this location. | | | | | | |
| Lug 2 Hole | A – Q, See Table | | | | | | |
| Length | In inches | | | | | | |
| Insulation Sleeving | S = Black sleeving over braid Omit = No sleeving | | | | | | |

| LUG HOLE SIZE CODES | | |
|---------------------|------------------------------|------------------|
| Hole Size Code | Ø C | Stud Size (Ref.) |
| X | .000 | No Lug Hole |
| Z | .090/.098 (2.29/2.49) | #2 |
| A | .114/.122 (2.90/3.10) | #4 |
| B | .142/.152 (3.61/3.86) | #6 |
| C | .168/.178 (4.27/4.52) | #8 |
| D | .193/.203 (4.90/5.16) | #10 |
| E | .260/.275 (6.60/6.99) | 1/4 |
| F | .323/.338 (8.20/8.59) | 5/16 |
| G | .385/.400 (9.78/10.16) | 3/8 |
| H | .448/.463 (11.38/11.76) | 7/16 |
| J | .510/.525 (12.95/13.34) | 1/2 |
| K | .573/.588 (14.55/14.94) | 9/16 |
| L | .651/.666 (16.54/16.92) | 5/8 |
| M | .770/.785 (19.56/19.94) | 3/4 |
| N | .895/.910 (22.73/ 23.11) | 7/8 |
| P | .957/.972 (24.31/24.69) | 15/16 |
| Q | 1.020/1.035 (25.91/26.29) | 1 |

- MATERIAL/FINISH**
- Braid and Lugs - 30 AWG copper/tin, silver, or nickel plated; or 30 AWG stainless steel
 - Sleeving - per M23053 or equivalent

| LUG HOLE SIZE CODES / DIMENSIONS | | | | | | | | | | | | | |
|----------------------------------|-------------|------------------------|-----------------|------------------------|---------|-------|-------|-------|---------|------|------|-------|--------------|
| | | | | | | | | | | | | | |
| Size Code | CSA (KCMIL) | CSA (mm ²) | Ref. AWG Equiv. | Current Rating (Amps)* | A (Ref) | | B | | D (Ref) | | E | | Max Lug Code |
| | | | | | In. | mm | In. | mm | In. | mm | In. | mm | |
| 781 | 100.8 | 51.06 | 0 (1/0) | 260 | .87 | 22.10 | .435 | 11.05 | .25 | 6.35 | .87 | 22.10 | H |
| 1125 | 129.6 | 65.67 | 00 (2/0) | 300 | 1.00 | 25.40 | .500 | 12.70 | .25 | 6.35 | 1.00 | 25.40 | K |
| 1375 | 158.4 | 80.25 | 000 (3/0) | 350 | 1.25 | 31.75 | .625 | 15.88 | .25 | 6.35 | 1.25 | 31.75 | M |
| 2000 | 201.6 | 102.15 | 0000 (4/0) | 405 | 1.50 | 38.10 | .750 | 19.05 | .25 | 6.35 | 1.50 | 38.10 | M |
| 2500 | 268.8 | 136.20 | 250 MCM | 455 | 2.00 | 50.80 | 1.000 | 25.40 | .25 | 6.35 | 2.00 | 50.80 | Q |
| 3000 | 307.2 | 155.67 | 300 MCM | 500 | 2.50 | 63.50 | 1.250 | 31.75 | .25 | 6.35 | 2.50 | 63.50 | Q |

- NOTES**
- ** Current rating given for information only and is not a requirement. Values shown are for uninsulated wire in free air, based on ambient of 30°C and max temperature of 90°C. Values should be derated in insulated or if in close contact with other components.
 - Lug hole sizes may differ from each other. Smaller lug hole diameter specified in "Lug 1" location in the part number. (Not applicable for RA right-angle lug configurations). Lug holes IAW AS7928
 - Length tolerance: ± .250 inches (6.35 mm) up to 5 inches, or ± 5% for lengths > than 5".
 - Ground Straps identified with Glenair name, P/N, and date code, space permitting