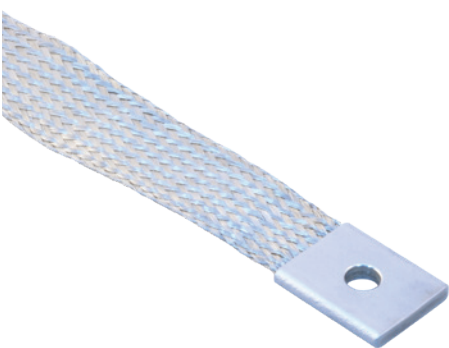


“BETTER THAN MIL-SPEC”

M24749 Type IV Type Configurable Ground Straps



107-504 Commercial Equivalent Ground Strap M24749 Type IV Style with lug hole and length options



HOW TO ORDER					
Sample Part Number	107-504	-12	B	G	S
Product Series	Commercial Equivalent Ground Straps				
Length	In Inches				
Lug 1 Hole Code	See Table				
Lug 2 Hole Code	See Table				
Insulation Code	S = M23053/5, Black Sleaving Omit = no sleaving C = M23053/18, Clear Sleaving				

GROUND STRAP FEATURES

- Meets the rigorous specifications of MIL-DTL-24749 Rev. C with length and lug configuration options beyond standard mil-spec straps.
- Materials in accordance with MIL-DTL-24749 or equivalent, unless specified.
- Lug holes in accordance with AS7928.
- Lug hole sizes may differ from each other depending on the part number development.
- Smaller lug hole diameter specified in “Lug 1” location in the part number.

MATERIAL/FINISH

- Lugs: 316L stainless steel/passivate per AMS2700.
- Braid: 36 AWG, 316L stainless steel (50%)-nickel 200 (50%)

LUG HOLE SIZE CODES		
Lug 1 & 2 Hole Code	Ø C	Stud Size (Ref.)
X	.000	No Lug Hole
Z	.090/.098 (2.29/2.49)	#2
A	.114/.122 (2.90/3.10)	#4
B	.142/.152 (3.61/3.86)	#6
C	.168/.178 (4.27/4.52)	#8
D	.193/.203 (4.90/5.16)	#10
E	.260/.275 (6.60/6.99)	1/4
F	.323/.338 (8.20/8.59)	5/16
G	.385/.400 (9.78/10.16)	3/8
H	.448/.463 (11.38/11.76)	7/16
J	.510/.525 (12.95/13.34)	1/2
K	.573/.588 (14.55/14.94)	9/16
L	.651/.666 (16.54/16.92)	5/8