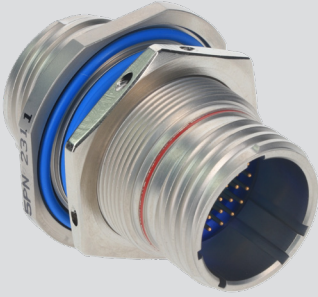


MIL-DTL-38999 SERIES I, II, III, AND IV QPL and COTS Hermetic Connectors



233-291-H7 Hermetic Receptacle Bulkhead Feed-Thru, Series III Type



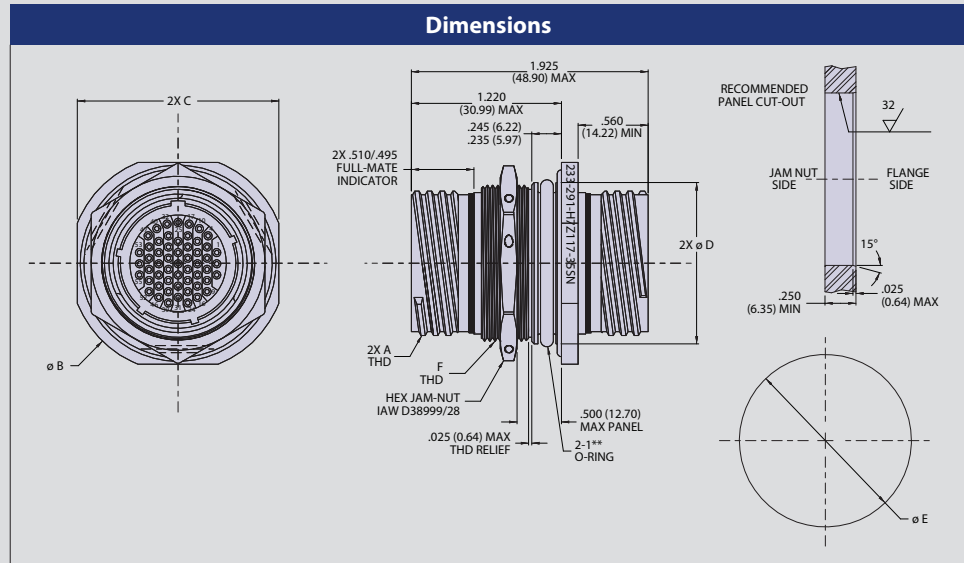
PART NUMBER DEVELOPMENT					
Sample Part Number	233-291-H7	ZL	17-35	S	N
Basic Part Number	233-291-H7 Hermetic Receptacle Bulkhead Feed-Thru				
Finish	Z1 = Passivate ZL = Nickel Plate				
Shell Size and Insert Arrangements	Per MIL-STD-1560				
Configuration	P = Pin On Jam-Nut Side S = Socket On Jam-Nut Side PP = Pin-Pin SS = Socket-Socket				
Polarization	A, B, C, D, or E (Specify N for Normal)				

MATERIALS AND FINISHES

- Shell and jam-nut: 300 series cres / per p/n development
- Contacts, pin: nickel-iron alloy / gold plate
- Contacts, socket: copper alloy / gold plate
- Hoods, sockets: cres / passivate
- Insulator, hermetic: full glass
- Insulator, socket: rigid dielectric
- Seals: fluorosilicone blend elastomer
- O-rings: fluorosilicone

NOTES

- For finishes other than specified, consult factory.
- Hermeticity: $<1 \times 10^{-7}$ cche/sec @ delta 1 atmosphere
- For pp or ss style, only symmetrical layouts may be selected. Power applied to contact on one side will result in power to the opposite contact, regardless of marking.



Shell Size	A Thread 0.1P-0.3L-TS-2	Ø B	C	Ø D	Ø E	F Thread Metric
9	0.6250	1.189 (30.20)	1.063 (27.00)	.732/.731 (18.59/ 18.57)	.736/.734 (18.69/18.64)	M17 X 1.0-6g
11	0.7500	1.375 (34.92)	1.252 (31.80)	.861/.860 (21.87/21.84)	.865/ .863 (21.97/21.92)	M20 X 1.0-6g
13	0.8750	1.500 (38.10)	1.374 (34.90)	1.051/ 1.050 (26.70/26.67)	1.055/ 1.053 (26.80/26.75)	M25 X 1.0-6g
15	1.0000	1.626 (41.30)	1.500 (38.10)	1.176/ 1.175 (29.87/29.85)	1.180/ 1.178 (29.97/29.92)	M28 X 1.0-6g
17	1.1875	1.752 (44.50)	1.626 (41.30)	1.301/ 1.300 (33.05/33.02)	1.305/ 1.303 (33.15/33.10)	M32 X 1.0-6g
19	1.2500	1.937 (49.20)	1.811 (46.00)	1.426/1.425 (36.22/36.20)	1.430/ 1.428 (36.32/36.27)	M35 X 1.0-6g
21	1.3750	2.063 (52.40)	1.937 (49.20)	1.551/ 1.550 (39.40/39.37)	1.555/ 1.553 (39.50/39.45)	M38 X 1.0-6g
23	1.5000	2.189 (55.60)	2.063 (52.40)	1.676/ 1.675 (42.57/42.55)	1.680/ 1.676 (42.67/42.57)	M41 X 1.0-6g
25	1.6250	2.311 (58.70)	2.189 (55.60)	1.802/ 1.801 (45.77/45.75)	1.807/ 1.805 (45.90/45.85)	M44 X 1.0-6g

MIL-DTL-38999 SERIES III