

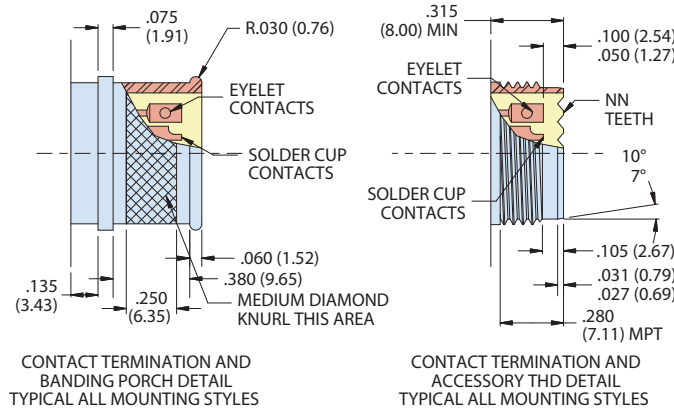
MIL-DTL-38999 Series IV Type
234-111 Hermetic Receptacle with Band Porch or Accessory Threads

HERMETIC CONNECTORS

NOTES

- Material / finish:
 - Shell, jam-nut - 300 series cres / per p/n development
 - Contacts, hermetic - nickel-iron alloy / gold plate
 - Contacts, socket - copper alloy / gold plate
 - Insulator, hermetic - vitreous glass / none
 - Insulator, socket - rigid dielectric / none
 - Seals, o-rings - fluorosilicone elastomer
- Test Criteria:
 - DWV - PER MIL-STD-1560 service rating (table iii)
 - IR - 5000 MEGOHMS MIN @ 500 VDC
 - Leak Rate - $<1 \times 10^{-7}$ ccHe/sec @ 1 ATM Delta P
- Glenair 234-111 conforms to mechanical, performance, and dimensional requirements of dtl-38999 Series iv hermetic receptacles except for the addition of accessory threads.
- Glenair 234-111 is designed to mate with any QPL MFRS D38999/46 or /47 plug with the same shell size, polarization, contact arrangement, and opposite contact gender.
- Glenair 234-111 is available with solder cup or eyelet terminated pin or socket face, and with specified finishes. Consult factory for alternative finishes or arrangements.

HOW TO ORDER	
Sample Part Number	234-111 -H2 T Z1 13 -35 S N
Basic Part Number	234-111 Hermetic Receptacle with Band Porch or Accessory Threads
Mounting Style	H2 = Box Mount H7 = Jam-Nut Mount H8 = Weld Mount
Rear Attachment Type	B = Banding Porch T = Accessory Threads
Finish	See Finish Table
Shell Size	11, 13, 15, 17, 19, 21, 23, 25
Contact Arrangement	Per MIL-STD-1560
Contact Style	P = Pin Face, Solder Cup S = Skt Face, Solder Cup X = Pin Face, Eyelet Z = Skt Face, Eyelet
Keying Position	Specify Position Per Key Position Table Specify N For Normal



Shell Size	"NN" Teeth
11	16
13	20
15	24
17	28
19	32
21	36
23	40
25	44

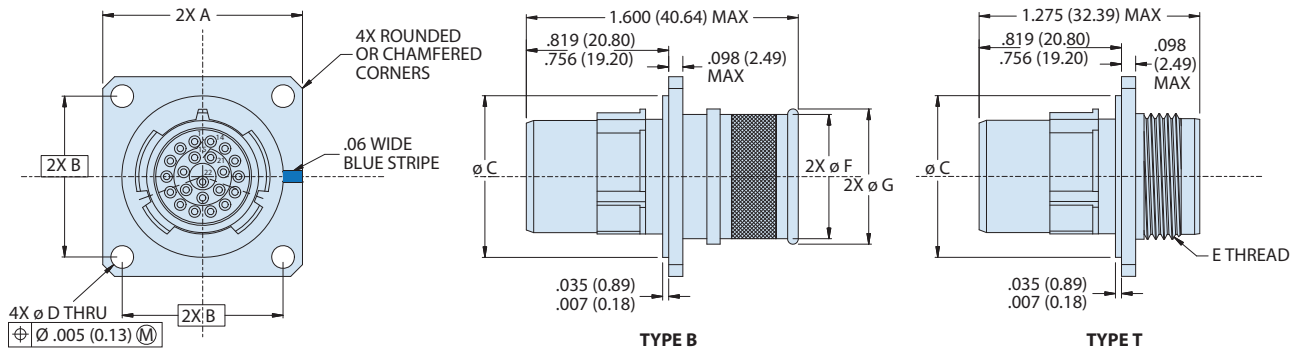
KEYING POSITION			
	Key Position	A°	B°
	N	110°	250°
	A	100°	260°
	B	90°	270°
	C	80°	280°
	D	70°	290°
	K	120°	255°
	L	120°	265°
	M	120°	275°
	R	120°	285°

DWV VOLTAGE LEVELS @ SEA LEVEL	
Service Rating	Voltage Ac Rms 60hz
M	1300 VAC
I	1800 VAC
II	2300 VAC
N	1000 VAC

MATERIAL/FINISH			
D-38999 Class	234-111 Class	Shell Material	Finish Description
N	ZL	Stainless Steel	Nickel Plated
Y	Z1		Passivated

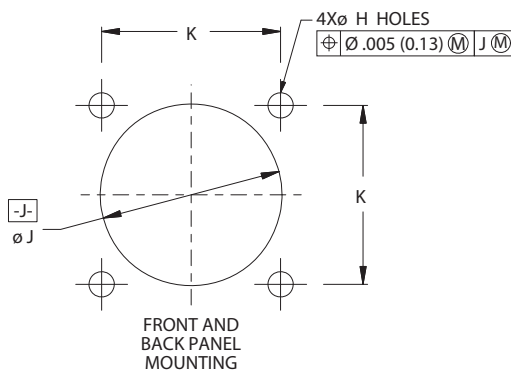
MIL-DTL-38999 Series IV Type
234-111 Hermetic Receptacle with Band Porch or Accessory Threads

-H2 BOX MOUNT DIMENSIONS



Shell Size Code	Shell Size	A Sq	B Bsc	C Dia	D Dia	E ISO THD Metric	F Dia	G Dia
B	11	1.051 (26.70) 1.008 (25.60)	.812 (20.62)	.793 (20.14) .778 (19.76)	.138 (3.51) .122 (3.10)	M15 X 1.0-6g	.600 (15.24)	.662 (16.81)
C	13	1.145 (29.08) 1.102 (27.99)	.906 (23.01)	.919 (23.34) .904 (22.96)	.138 (3.51) .122 (3.10)	M18 X 1.0-6g	.700 (17.78)	.762 (19.35)
D	15	1.240 (31.50) 1.197 (30.40)	.969 (24.61)	1.044 (26.52) 1.029 (26.14)	.138 (3.51) .122 (3.10)	M22 X 1.0-6g	.835 (21.21)	.898 (22.81)
E	17	1.334 (33.88) 1.291 (32.79)	1.062 (26.97)	1.170 (29.72) 1.155 (29.34)	.138 (3.51) .122 (3.10)	M25 X 1.0-6g	.960 (24.38)	1.022 (25.96)
F	19	1.460 (37.08) 1.417 (35.99)	1.156 (29.36)	1.294 (32.87) 1.279 (32.49)	.138 (3.51) .122 (3.10)	M28 X 1.0-6g	1.062 (26.97)	1.125 (28.58)
G	21	1.583 (40.21) 1.539 (39.09)	1.250 (31.75)	1.419 (36.04) 1.404 (35.66)	.138 (3.51) .122 (3.10)	M31 X 1.0-6g	1.188 (30.18)	1.266 (32.16)
H	23	1.709 (43.41) 1.665 (42.29)	1.375 (34.92)	1.544 (39.22) 1.529 (38.84)	.157 (3.99) .142 (3.61)	M34 X 1.0-6g	1.275 (32.39)	1.338 (33.99)
J	25	1.835 (46.61) 1.791 (45.49)	1.500 (38.10)	1.670 (42.42) 1.654 (42.01)	.157 (3.99) .142 (3.61)	M37 X 1.0-6g	1.475 (37.47)	1.538 (39.07)

PANEL CUT-OUT DIMENSIONS

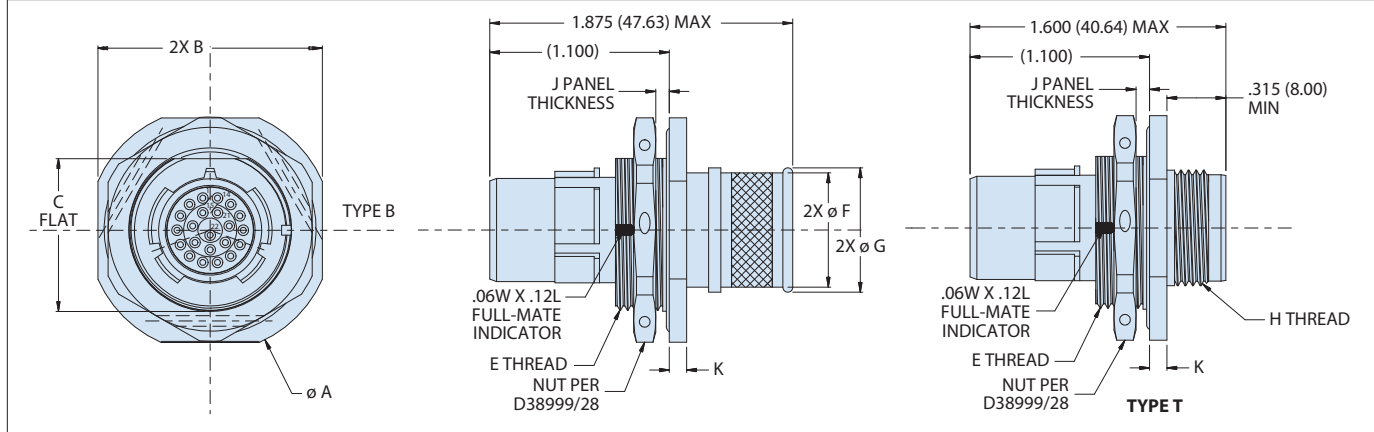


Shell Size Code	Shell Size	ø H Holes	ø J Min		K Bsc
			Type B	Type T	
B	11	.133 (3.38); .123 (3.12)	.796 (20.22)	.845 (21.46)	.812 (20.62)
C	13	.133 (3.38); .123 (3.12)	.921 (23.39)	.965 (24.51)	.906 (23.01)
D	15	.133 (3.38); .123 (3.12)	1.047 (26.59)	1.095 (27.81)	.969 (24.61)
E	17	.133 (3.38); .123 (3.12)	1.218 (30.94)	1.235 (31.37)	1.062 (26.97)
F	19	.133 (3.38); .123 (3.12)	1.296 (32.92)	1.365 (34.67)	1.156 (29.36)
G	21	.133 (3.38); .123 (3.12)	1.421 (36.09)	1.485 (37.72)	1.250 (31.75)
H	23	.159 (4.04); .149 (3.78)	1.546 (39.27)	1.605 (40.77)	1.375 (34.92)
J	25	.155 (3.94); .145 (3.68)	1.672 (42.47)	1.725 (43.82)	1.500 (38.10)

**MIL-DTL-38999 Series IV Type
234-111 Hermetic Receptacle with Band Porch or Accessory Threads**

HERMETIC CONNECTORS

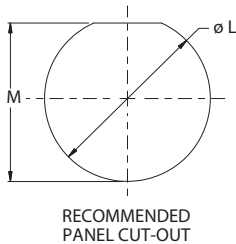
-H7 JAM-NUT MOUNT DIMENSIONS



Shell Size Code	Shell Size	A Dia	B	C Flat	E Thread ISO Metric	F Dia	G Dia	H Thread ISO Metric	J	K
B	11	1.385 (35.18)	1.267 (32.18)	.754 (19.15)	M20 X 1.0-6g	.600 (15.24)	.662 (16.81)	M15 X 1.0-6g	.125 (3.18)	.118 (3.00)
		1.362 (34.59)	1.232 (31.29)	.744 (18.90)						
C	13	1.511 (38.38)	1.393 (35.38)	.941 (23.90)	M25 X 1.0-6g	.700 (17.78)	.762 (19.35)	M18 X 1.0-6g	.125 (3.18)	.118 (3.00)
		1.488 (37.80)	1.358 (34.49)	.931 (23.65)						
D	15	1.637 (41.58)	1.519 (38.58)	1.066 (27.08)	M28 X 1.0-6g	.835 (21.21)	.898 (22.81)	M22 X 1.0-6g	.125 (3.18)	.118 (3.00)
		1.614 (41.00)	1.484 (37.69)	1.056 (26.82)						
E	17	1.763 (44.78)	1.641 (41.68)	1.191 (30.25)	M32 X 1.0-6g	.960 (24.38)	1.022 (25.96)	M25 X 1.0-6g	.125 (3.18)	.118 (3.00)
		1.740 (44.20)	1.606 (40.79)	1.181 (30.00)						
F	19	1.948 (49.48)	1.830 (46.48)	1.316 (33.43)	M35 X 1.0-6g	1.062 (26.97)	1.125 (28.58)	M28 X 1.0-6g	.125 (3.18)	.149 (3.78)
		1.925 (48.90)	1.795 (45.59)	1.306 (33.17)						
G	21	2.074 (52.68)	1.956 (49.68)	1.441 (36.60)	M38 X 1.0-6g	1.188 (30.18)	1.266 (32.16)	M31 X 1.0-6g	.125 (3.18)	.149 (3.78)
		2.051 (52.10)	1.921 (48.79)	1.431 (36.35)						
H	23	2.200 (55.88)	2.078 (52.78)	1.565 (39.75)	M41 X 1.0-6g	1.275 (32.39)	1.338 (33.99)	M34 X 1.0-6g	.125 (3.18)	.149 (3.78)
		2.177 (55.30)	2.043 (51.89)	1.556 (39.52)						
J	25	2.326 (59.08)	2.204 (55.98)	1.692 (42.98)	M44 X 1.0-6g	1.475 (37.47)	1.538 (39.07)	M37 X 1.0-6g	.125 (3.18)	.149 (3.78)
		2.299 (58.39)	2.169 (55.09)	1.681 (42.70)						

PANEL CUT-OUT DIMENSIONS

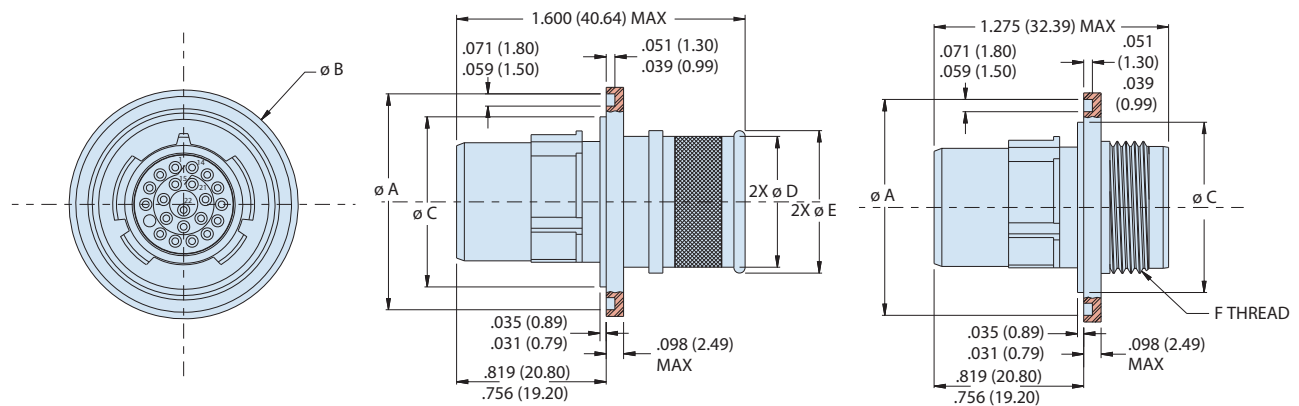
Shell Size Code	Shell Size	L Dia		M	
B	11	.835 (21.21); .825 (20.96)	.771 (19.58); .761 (19.33)		
C	13	1.020 (25.91); 1.010 (25.65)	.955 (24.26); .945 (24.00)		
D	15	1.145 (29.08); 1.135 (28.83)	1.085 (27.56); 1.075 (27.30)		
E	17	1.270 (32.26); 1.260 (32.00)	1.210 (30.73); 1.200 (30.48)		
F	19	1.395 (35.43); 1.385 (35.18)	1.335 (33.91); 1.325 (33.65)		
G	21	1.520 (38.61); 1.510 (38.35)	1.460 (37.08); 1.450 (36.83)		
H	23	1.645 (41.78); 1.635 (41.53)	1.585 (40.26); 1.575 (40.00)		
J	25	1.770 (44.96); 1.760 (44.70)	1.710 (43.43); 1.700 (43.18)		



MIL-DTL-38999 Series IV Type
234-111 Hermetic Receptacle with Band Porch or Accessory Threads

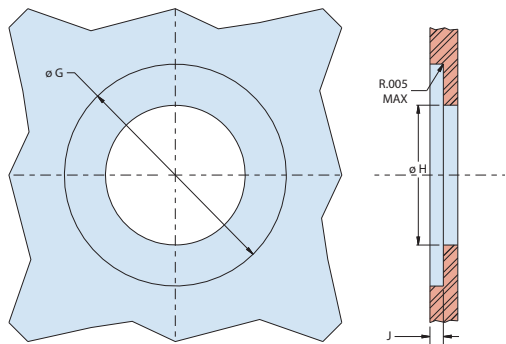
HERMETIC CONNECTORS

-H8 WELD MOUNT DIMENSIONS



Shell Size Code	Shell Size	Ø A	Ø B	Ø C	Ø D	Ø E	F Thread ISO Metric
B	11	1.035 (26.29) 1.024 (26.01)	1.106 (28.09) 1.094 (27.79)	.793 (20.14) .778 (19.76)	.600 (15.24)	.662 (16.81)	M15 X 1.0-6g
C	13	1.161 (29.49) 1.150 (29.21)	1.232 (31.29) 1.220 (30.99)	.919 (23.34) .904 (22.96)	.700 (17.78)	.762 (19.35)	M18 X 1.0-6g
D	15	1.287 (32.69) 1.276 (32.41)	1.358 (34.49) 1.346 (34.19)	1.044 (26.52) 1.029 (26.14)	.835 (21.21)	.898 (22.81)	M22 X 1.0-6g
E	17	1.374 (34.90) 1.362 (34.59)	1.445 (36.70) 1.433 (36.40)	1.170 (29.72) 1.155 (29.34)	.960 (24.38)	1.022 (25.96)	M25 X 1.0-6g
F	19	1.520 (38.61) 1.508 (38.30)	1.591 (40.41) 1.579 (40.11)	1.294 (32.87) 1.279 (32.49)	1.062 (26.97)	1.125 (28.58)	M28 X 1.0-6g
G	21	1.661 (42.19) 1.650 (41.91)	1.732 (43.99) 1.720 (43.69)	1.419 (36.04) 1.404 (35.66)	1.188 (30.18)	1.265 (32.13)	M31 X 1.0-6g
H	23	1.827 (46.41) 1.815 (46.10)	1.898 (48.21) 1.886 (47.90)	1.544 (39.22) 1.529 (38.84)	1.275 (32.39)	1.338 (33.99)	M34 X 1.0-6g
J	25	1.913 (48.59) 1.902 (48.31)	1.984 (50.39) 1.972 (50.09)	1.669 (42.39) 1.654 (42.01)	1.475 (37.47)	1.538 (39.07)	M37 X 1.0-6g

PANEL CUT-OUT DIMENSIONS



Shell Size	Ø G	Ø H Type B	Ø H Type T	Depth J ±.005
11	1.112/1.107 (28.24/28.12)	.750 (19.05)	.845 (21.46)	.100 (2.54)
13	1.238/1.233 (31.45/31.32)	.850 (21.59)	.965 (24.51)	.100 (2.54)
15	1.364/1.359 (34.65/34.52)	.985 (25.02)	1.095 (27.81)	.100 (2.54)
17	1.451/1.446 (36.86/36.73)	1.110 (28.19)	1.235 (31.37)	.100 (2.54)
19	1.597/1.592 (40.56/40.44)	1.215 (30.86)	1.485 (37.72)	.100 (2.54)
21	1.738/1.733 (44.15/44.02)	1.350 (34.29)	1.605 (40.77)	.100 (2.54)
23	1.894/1.899 (48.11/48.23)	1.425 (36.20)	1.725 (43.82)	.100 (2.54)
25	1.990/1.985 (50.55/50.42)	1.625 (41.28)	1.825 (46.36)	.100 (2.54)