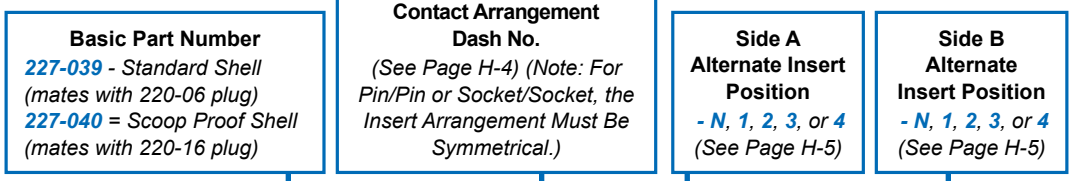




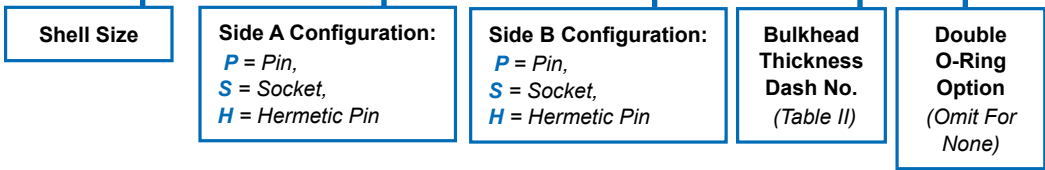
227-039 and 227-040  
Jam Nut Mount Bulkhead Feed-Through Connector  
Environmental or Hermetic

**Bulkhead feed-through for high pressure applications**

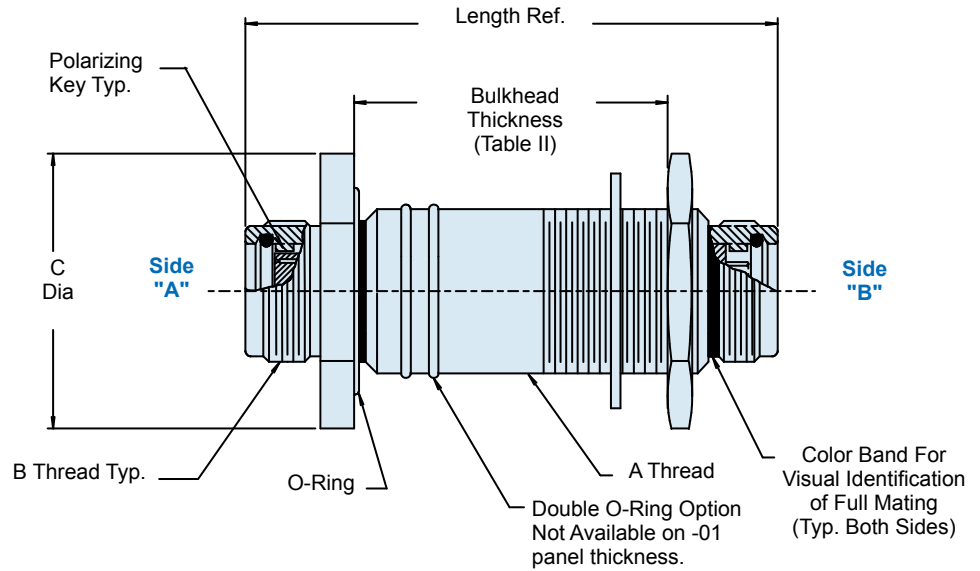
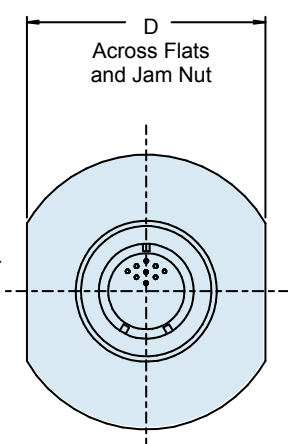
**How To Order**



227-039 - 10 - 2 P N P N 03 D



H



Metric dimensions (mm) are indicated in parentheses

227-039 and 227-040  
**Jam Nut Mount Bulkhead Feed-Through Connector  
 Environmental or Hermetic**



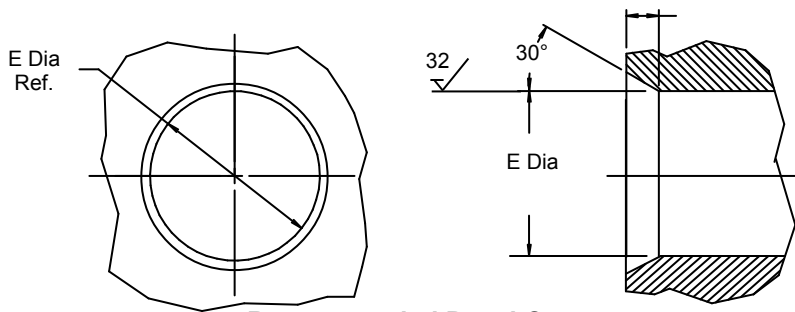
Table I					
Shell Size	A Thread Class 2A	B Thread Class 2A	C Dia	D Flat	E Dia *
10	7/8-20 UNEF	.750-.1P-.1L	1.41 (35.8)	1.250 (31.8)	.875 (22.2)
12	1-20 UNEF	.875-.1P-.1L	1.53 (38.9)	1.375 (34.9)	1.000 (25.4)
14	1 1/8-18 UNEF	1.000-.1P-.1L	1.66 (42.2)	1.500 (38.1)	1.125 (28.6)
16	1 1/4-16 UN	1.125-.1P-.1L	1.78 (45.2)	1.625 (41.3)	1.250 (31.8)
18	1 3/8-16 UN	1.250-.1P-.1L	1.91 (48.5)	1.750 (44.5)	1.375 (34.9)
20	1 1/2-16 UN	1.375-.1P-.1L	2.03 (51.6)	1.875 (47.6)	1.500 (38.1)
22	1 5/8-16 UN	1.500-.1P-.1L	2.16 (54.9)	2.000 (50.8)	1.625 (41.3)
24	1 3/4-16 UN	1.625-.1P-.1L	2.28 (57.9)	2.125 (54.0)	1.750 (44.5)

\* Standard Shell  $+.010 (.3) -.000 (.0)$   
 \* Double "O" Ring Option  $+.002 (.3) -.000 (.0)$

Table II				
Dash No.	Panel Min	Panel Max	Length (Ref.)	
			Standard Shell Length	Scoop Proof Shell Length
01	.03 (.8)	1.00 (25.4)	2.30 (58.4)	3.00 (76.2)
02	1.00 (25.4)	2.00 (50.8)	3.30 (83.8)	4.00 (101.6)
03	2.00 (50.8)	3.00 (76.2)	4.30 (109.2)	5.00 (127.0)
04	3.00 (76.2)	4.00 (101.6)	5.30 (134.6)	6.00 (152.4)
05	4.00 (101.6)	5.00 (127.0)	6.30 (160.0)	7.00 (177.8)
06	5.00 (127.0)	6.00 (152.4)	7.30 (185.4)	8.00 (203.2)
07	6.00 (152.4)	7.00 (177.8)	8.30 (210.8)	9.00 (228.6)
08	7.00 (177.8)	8.00 (203.2)	9.30 (236.2)	10.00 (254.0)

**Notes**

1. Open face pressure rating: 1000 to 5000 psi, hermetic side
2. Power to a given contact on one end will result in power to the contact directly opposite, regardless of contact I.D.



**Recommended Panel Cutout**

Metric dimensions (mm) are indicated in parentheses