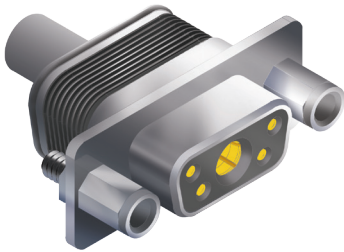


## 280-089S combo cable socket connectors with standard mounting flange, integral banding platform and crimp termination



Combo HiPer-D® Combo-D connectors, with integral banding platform, feature size #20 signal contacts and size #8 power or coax contacts. **Size #8 contacts are ordered separately.** The HiPer-D® features a rugged machined aluminum shell and wire grommet for environmental protection. Size #20 contacts are packaged with connector. Terminate contacts with crimp tools purchased separately. Glass-reinforced thermoset epoxy insulators, copper alloy retention clips. Fluorosilicone rear grommet meets IP67 immersion requirement. 1000 VAC, 7.5 Amps (#20), up to 40 Amps with size #8 power contacts.

### How To Order

<b>Sample Part Number</b>	<b>280-089</b>	<b>S</b>	<b>1-5W1</b>	<b>ME</b>	<b>P</b>
<b>Basic Part Number</b>	<b>280-089</b>				
<b>Contact</b>	<b>S</b> = Socket <b>A</b> = Less contact				
<b>Shell Size-Contact Arrangement</b>	See Shell Size - Contact Arrangements Table				
<b>Shell Finish</b>	<b>ME</b> = Electroless Nickel (RoHS) <b>Z1</b> = Passivated Stainless Steel (RoHS)	<b>MT</b> = Nickel-PTFE (RoHS) <b>ZM</b> = Nickel Over Stainless			
<b>Mating Hardware</b>	<b>N</b> = No Hardware <b>L</b> = Low Profile Hex Head Captive Jackscrew <b>S</b> = Hex Head Captive Screwlock	<b>P</b> = Female Jackpost <b>K</b> = Slot Head Extended Jackscrew <b>T</b> = Slot Head Extended Captive Screwlock			

### Contact Arrangements

Shell Size-Contact Arr.	Contact Size and Qty		
	#22	#20	#8
1-2W2			2
1-5W1		4	1
2-3W3			3
2-7W2		5	2
2-11W1		10	1
3-5W5			5
3-9W4		5	4
3-13W3		10	3
3-17W2		15	2
3-21W1		20	1
4-8W8			8
4-13W6		7	6
4-17W5		12	5
4-21WA4		17	4
4-25W3		22	3
4-27W2		25	2
5-24W7		17	7
5-36W4		32	4
5-43W2		41	2
5-47W1		46	1

### Mating Hardware

<b>N</b> Thru-Hole No Hardware	<b>P</b> Female Jackpost
<b>S</b> Captive Screwlock, Hex Head	<b>L</b> Captive Jackscrew, Hex Head
<b>K</b> Slot-Head Extended Jackscrew	<b>T</b> Slot-Head Extended Captive Screwlock

### Specifications

Current Rating	#20 7.5 AMPS, #8 40 AMPS
Test Voltage	1000 VAC RMS
Insulation Resistance	5000 megohms minimum
Operating Temperature	-65° C. to +200° C.
Ingress Protection	IP 67
Shock	300 g.
Vibration, Random	43.92 g.

### Materials and Finishes

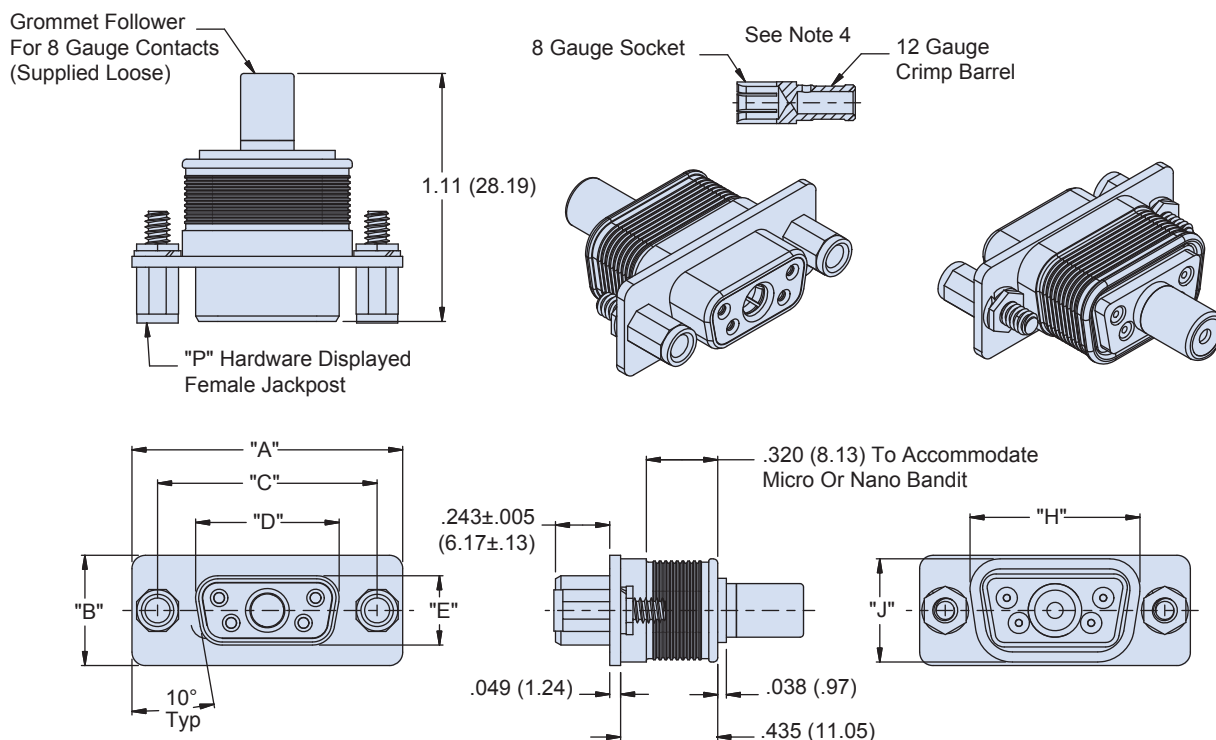
Shell	Aluminum alloy
Contacts	Copper alloy, 50 microinches gold
Insulators	Thermoset epoxy
Retention Clips	Copper alloy
Grommet, O-ring	Fluorosilicone rubber
Hardware	300 series stainless steel

# SERIES 28 HiPer-D® Combo Connectors



280-089S combo cable socket connectors with standard mounting flange, integral banding platform and crimp termination

## 280-089S DIMENSIONS



Dimensions														
Shell Size	"A" ±.015		"B" ±.015		"C" ±.005		"D" ±.005		"E" ±.005		"H"		"J"	
	In.	mm.	In.	mm.	In.	mm.	In.	mm.	In.	mm.	In.	mm.	In.	mm.
1	1.213	30.81	0.494	12.55	0.984	24.99	0.643	16.33	0.311	7.90	0.760	19.30	0.462	11.73
2	1.541	39.14	0.494	12.55	1.312	33.32	0.971	24.66	0.311	7.90	1.089	27.66	0.462	11.73
3	2.088	53.04	0.494	12.55	1.852	47.04	1.511	38.38	0.311	7.90	1.629	41.38	0.462	11.73
4	2.729	69.32	0.494	12.55	2.5	63.50	2.159	54.84	0.311	7.90	2.277	57.84	0.462	11.73
5	2.635	66.93	0.605	15.37	2.406	61.11	2.064	52.43	0.423	10.74	2.182	55.42	0.474	12.04
6	2.729	69.32	0.668	16.97	2.5	63.50	2.189	55.60	0.486	12.34	2.307	58.60	0.626	15.90

## NOTES

1. See [About Series 28 HiPer-D® Shell Plating Options](#) for additional shell material and finish options. Glenair offers the industry's widest selection of plating options with no minimum order quantities or setup charges.
2. For panel cutouts, refer to [Panel Cutouts and Printed Circuit Board Footprints](#).
3. Connectors are supplied with size #20 crimp contacts per M39029. Contacts are not installed. Refer to [HiPer-D® Contacts and Tools](#) section for contact part numbers, specifications, crimp tool information, and insertion/extraction tools.
4. **Size 8 contacts are ordered separately.** Refer to [HiPer-D® Contacts and Tools](#) section for contact ordering information, specifications, crimp tool information, and insertion/extraction tools.
5. Combo HiPer-D® connectors meet the applicable requirements of MIL-DTL-24308 and are intermateable with standard non-environmental D Subminiature connectors with corresponding contact arrangements and type. **Size 8 contacts from other manufacturers cannot be installed in HiPer-D® connectors.**
6. Additional electrical, mechanical and environmental specifications are listed in [HiPer-D® Product Specification](#).