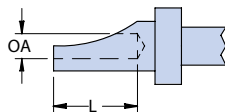


Glenair IPT Series Bayonet-Lock Signal Connectors (MIL-DTL-26482 Serie I) Contact Dimensions



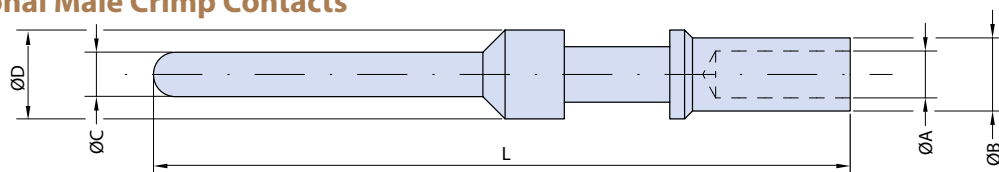
IPT Series
Bayonet Lock
Connectors

IPT Solder Cup Contacts



Contact size	Ø A	L	AWG Max.	Max. wire section
20S / 20	1.16	3.17	20	0.6 mmq
16S / 16	1.98	4.77	16	1.2 mmq
16 - 2.5	3.00	6.10	-	2.5 mmq

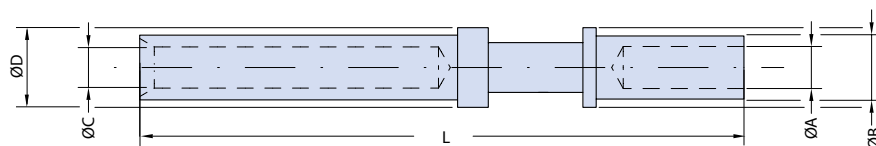
IPT...C Optional Male Crimp Contacts



P/N	Size	mmq	AWG	A	B	C	D	L
10-374-20	20S	0.6	20	1.30 +0.03 0	1.93 +0.02 -0.02	1.00 ±0.02	2.0 +0 -0.03	20.37 ±0.1
10-375-20	20	0.6	20	1.30 +0.03 0	1.93 +0.02 -0.02	1.00 ±0.02	2.0 +0 -0.03	24.33 ±0.1
10-374-16	16S	1.2	16	1.72 +0.03 0	2.60 +0.02 -0.02	1.57 ±0.02	3.2 +0 -0.03	22.30 ±0.1
10-375-16	16	1.2	16	1.72 +0.03 0	2.60 +0.02 -0.02	1.57 ±0.02	3.2 +0 -0.03	25.80 ±0.1
10-373-12S	12S	2.3	14-12	2.50 +0.1 0	3.80 +0.2 0	2.38 ±0.02	4.0 +0 -0.03	22.50 ±0.1
10-373-12	12	2.3	14-12	2.50 +0.1 0	3.80 +0.2 0	2.38 ±0.02	4.0 +0 -0.01	26.30 ±0.1

Shell Sizes 8 through 18 use the shorter contacts, designated as 16S and 20S

IPT...C Optional Female Crimp Contacts



P/N	Size	mmq	AWG	A	B	C	D	L
10-571-20LC	20S	0.6	20	1.30 +0.03 0	1.93 +0.02 -0.02	1.08 ±0.02	1.96 +0 -0.03	20.40 ±0.1
10-573-20LC	20	0.6	20	1.30 +0.03 0	1.93 +0.02 -0.02	1.08 ±0.02	1.96 +0 -0.03	24.40 ±0.1
10-571-16LC	16S	1.2	16	1.72 +0.03 0	2.60 +0.02 -0.02	1.65 ±0.02	2.80 +0 -0.03	22.25 ±0.1
10-573-16LC	16	1.2	16	1.72 +0.03 0	2.60 +0.02 -0.02	1.65 ±0.02	2.80 +0 -0.03	25.80 ±0.1
10-576-12S	12S	2.3	14-12	2.50 +0.1 0	3.80 +0.2 0	2.48 ±0.05	4.0 +0 -0.01	21.45 ±0.1
10-576-12	12	2.3	14-12	2.50 +0.1 0	3.80 +0.2 0	2.48 ±0.05	4.0 +0 -0.01	25.40 ±0.1

Shell Sizes 8 through 18 use the shorter contacts, designated as 16S and 20S