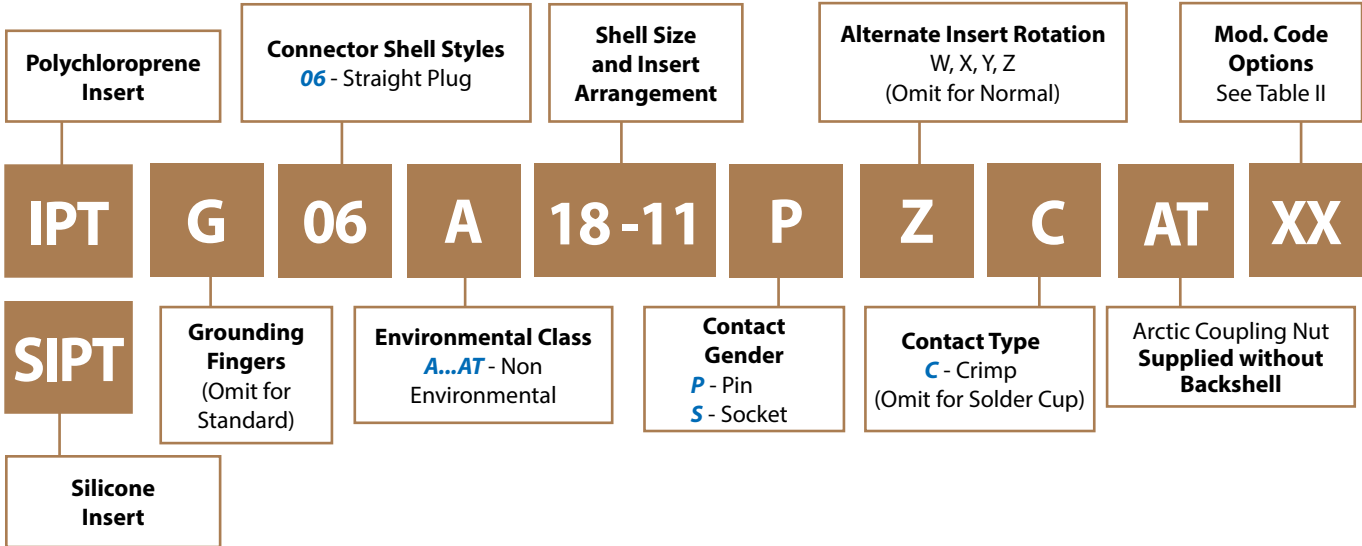




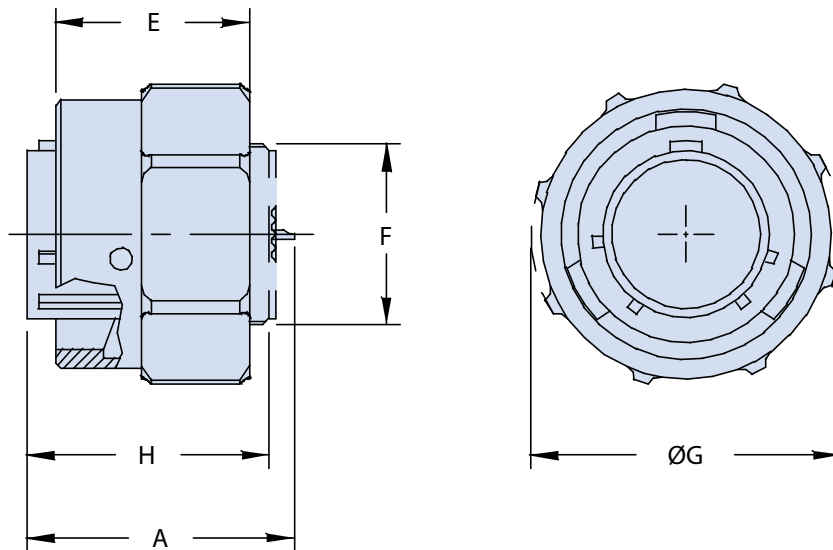
# IPT 06 A... AT

## Straight Plug Connector

with Accessory Threads and Arctic Coupling Nut



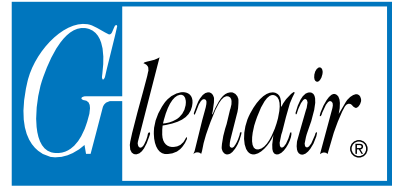
C



### Application Notes

1. Straight plug with Arctic coupling nut (IAW BS9522 F0017).
2. Connector Class "A" (non-environmental)—no grommet supplied.
3. Standard materials configuration consists of aluminum alloy.
4. Standard contact material consists of copper alloy with gold plating over nickel.
5. A broad range of other front and rear connector accessories are available. See our website and/or contact factory for complete information.
6. Standard insert is high insulation synthetic rubber.

**IPT 06 A...AT**  
**Straight Plug Connector**  
with Accessory Threads and Arctic Coupling Nut



**TABLE I: DIMENSIONS**

Shell size	A Max.	H ±0.2	E ±0.2	ØG ±0.2	F Thread in inches
8	25.4	21.4	18	22.5	.4375 - 28 UNEF
10	25.4	21.4	18	24.8	.5625 - 24 UNEF
12	25.4	21.4	18	30.2	.6875 - 20 UNEF
14	25.4	21.4	18	33.6	.8125 - 20 UNEF
16	25.4	21.4	18	37.3	.9375 - 20 UNEF
18	25.4	21.4	18	39.7	1.0625 - 18 UNEF
20	27.8	25.4	19	43.3	1.1875 - 18 UNEF
22	27.8	25.4	19	47.6	1.3125 - 18 UNEF
24	29.4	27.0	20	49.7	1.4375 - 18 UNEF

For accessories and external dimensions see IPT06.

**TABLE II: MODIFICATION CODES**

CONTACT OPTIONS	
Sym	Description
<b>B0</b>	Connector Without Contacts (Only for crimp version)
FINISH OPTIONS	
Sym	Description and RoHS compliant
<b>F6</b>	Black Electrodeposited Paint
<b>F7</b>	Black Zinc Nickel
<b>F11</b>	Electroless Nickel
<b>MB</b>	Marine Bronze
<b>Omit for standard version (Cadmium Olive Drab Finish)</b>	

