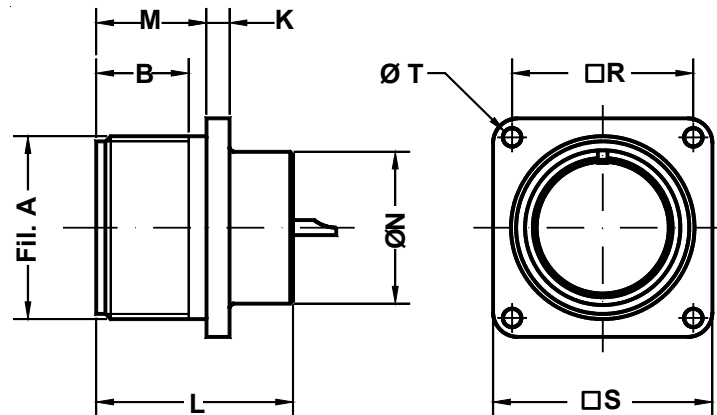


IT 3102 A / IT 3102 R
IT 4102 A / IT 4102 R

Connettore da pannello
Box mounting receptacle



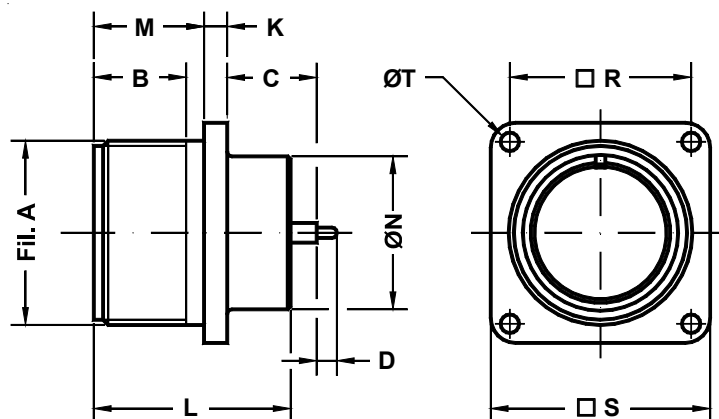
Es. / Ex. : IT3102A20-27P

Dimensione Guscio Shell Size	Filetto A A thread	B min.	K ±0.2	L ±0.5	M +0.1 -0	N Max.	R ±0.1	S ±0.3	T +0.18 -0
10 SL	0.6250 - 24UNEF	11	2.8	24.6	14.3	16.3	18.20	25.4	3.2
12 S	0.7500 - 20UNEF	11	2.8	24.6	14.3	16.3	20.60	27.8	3.2
12	0.7500 - 20UNEF	16	2.8	34.5	19.1	16.3	20.60	27.8	3.2
14 S	0.8750 - 20UNEF	11	3.3	24.8	14.5	19.3	23.00	30.0	3.2
14	0.8750 - 20UNEF	16	3.3	34.5	19.1	19.3	23.00	30.0	3.2
16 S	1.0000 - 20UNEF	11	3.3	24.8	14.5	22.5	24.60	32.5	3.2
16	1.0000 - 20UNEF	16	3.3	34.2	19.1	22.5	24.60	32.5	3.2
18	1.1250 - 18UNEF	16	4.0	34.2	19.1	25.6	27.00	35.0	3.2
20	1.2500 - 18UNEF	16	4.0	34.2	19.1	29.1	29.40	38.0	3.2
22	1.3750 - 18UNEF	16	4.0	34.2	19.1	32.3	31.80	41.0	3.2
24	1.5000 - 18UNEF	17	4.0	35.7	20.0	35.4	34.90	44.5	3.7
28	1.7500 - 18UNS	17	4.0	35.7	20.0	41.5	39.70	50.8	3.7
32	2.0000 - 18UNS	17	4.0	37.3	22.3	47.9	44.50	57.0	4.3
36	2.2500 - 16UN	17	4.0	37.3	22.3	54.2	49.20	63.5	4.3
40	2.5000 - 16UN	17	4.0	37.3	22.3	58.8	55.55	69.9	4.3

Connettore da pannello flangia quadra.
 Classe A: per impieghi generali.
 Classe R: per tenuta ambientale.

Box mounting square flange receptacle.
 Class A: for general use.
 Class R: for environmental sealing.

Connettore da pannello Box mounting receptacle



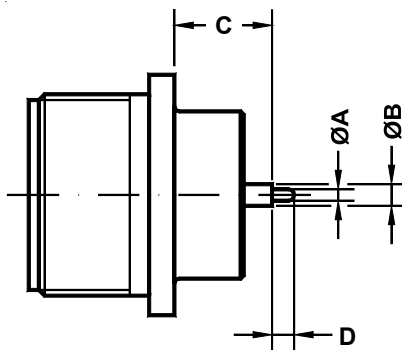
Es. / Ex. : IT3102Y20-27P

Dimensione Guscio Shell Size	Filetto A A thread	B min.	C - D	K ±0.2	L ±0.5	M +0.1 -0	N Max.	R ±0.1	S ±0.3	T +0.18 -0
10 SL	0.6250 - 24UNEF	11	Vedi tabella alla pagina seguente See the table on the next page	2.8	24.6	14.3	16.3	18.20	25.4	3.2
12 S	0.7500 - 20UNEF	11		2.8	24.6	14.3	16.3	20.60	27.8	3.2
12	0.7500 - 20UNEF	16		2.8	34.5	19.1	16.3	20.60	27.8	3.2
14 S	0.8750 - 20UNEF	11		3.3	24.8	14.5	19.3	23.00	30.0	3.2
14	0.8750 - 20UNEF	16		3.3	34.5	19.1	19.3	23.00	30.0	3.2
16 S	1.0000 - 20UNEF	11		3.3	24.8	14.5	22.5	24.60	32.5	3.2
16	1.0000 - 20UNEF	16		3.3	34.5	19.1	22.5	24.60	32.5	3.2
18	1.1250 - 18UNEF	16		4.0	34.2	19.1	25.6	27.00	35.0	3.2
20	1.2500 - 18UNEF	16		4.0	34.2	19.1	29.1	29.40	38.0	3.2
22	1.3750 - 18UNEF	16		4.0	34.2	19.1	32.3	31.80	41.0	3.2
24	1.5000 - 18UNEF	17		4.0	35.7	20.0	35.4	34.90	44.5	3.7
28	1.7500 - 18UNS	17		4.0	35.7	20.0	41.5	39.70	50.8	3.7
32	2.0000 - 18UNS	17		4.0	37.3	22.3	47.9	44.50	57.0	4.3
36	2.2500 - 16UN	17		4.0	37.3	22.3	54.2	49.20	63.5	4.3
40	2.5000 - 16UN	17		4.0	37.3	22.3	58.8	55.55	69.9	4.3

Connettore da pannello flangia quadra con contatti da circuito stampato.

Box mounting square flange receptacle with PCB contacts.

Connettore da pannello
Box mounting receptacle



Es. / Ex. : IT3102Y20-27P

Dimensione Guscio Shell Size	DS1				Y # 16				Y #12				YL5				
	A	B	C	D	A	B	C	D	A	B	C	D	A	B	C	D	
10 SL	0.8	1.8	13.80	3.6	-	-	-	-	-	-	-	-	-	-	-	-	-
12 S	0.8	1.8	12.90	3.6	-	-	-	-	-	-	-	-	-	-	-	-	-
12	0.8	1.8	-	3.6	-	-	-	-	1.8	3.4	18.30	3.5	-	-	-	-	-
14 S	0.8	1.8	12.40	3.6	-	-	-	-	-	-	-	-	-	-	-	-	-
14	0.8	1.8	14.60	3.6	-	-	-	-	-	-	-	-	-	-	-	-	-
16 S	0.8	1.8	12.40	3.6	-	-	-	-	-	-	-	-	-	-	-	-	-
16	0.8	1.8	14.60	3.6	0.8	1.8	17.85	3.5	1.8	3.4	17.85	3.5	0.8	1.8	17.85	5	
18	0.8	1.8	13.80	3.6	0.8	1.8	17.05	3.5	1.8	3.4	17.05	3.5	0.8	1.8	17.05	5	
20	0.8	1.8	13.80	3.6	0.8	1.8	17.05	3.5	1.8	3.4	17.05	3.5	0.8	1.8	17.05	5	
22	0.8	1.8	13.30	3.6	0.8	1.8	16.55	3.5	1.8	3.4	16.55	3.5	0.8	1.8	16.55	5	
24	0.8	1.8	12.20	3.6	0.8	1.8	15.45	3.5	1.8	3.4	15.45	3.5	0.8	1.8	15.45	5	
28	0.8	1.8	13.00	3.6	0.8	1.8	16.25	3.5	1.8	3.4	16.25	3.5	0.8	1.8	16.25	5	
32	-	-	-	-	0.8	1.8	13.85	3.5	1.8	3.4	13.85	3.5	0.8	1.8	16.70	5	
36	-	-	-	-	0.8	1.8	13.85	3.5	1.8	3.4	13.85	3.5	0.8	1.8	16.70	5	
40	-	-	-	-	0.8	1.8	13.85	3.5	1.8	3.4	13.85	3.5	0.8	1.8	16.70	5	

Connettore da pannello flangia quadra con contatti da circuito stampato.

Box mounting square flange receptacle with PCB contacts.