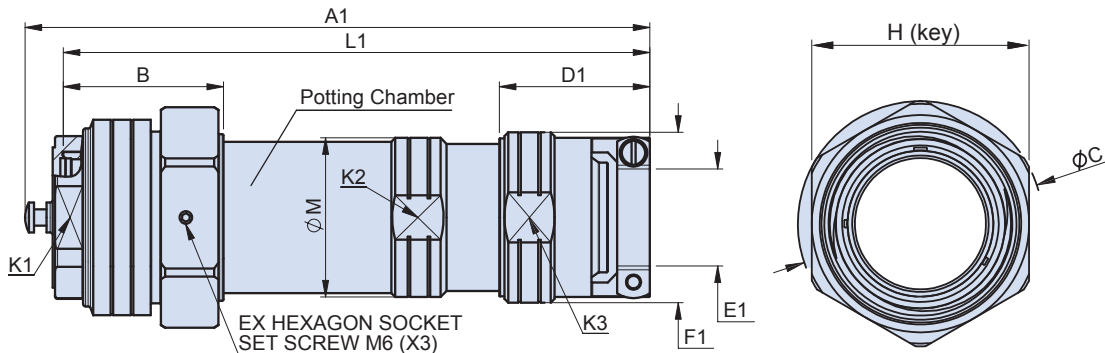


### 927-072-016 PLUG WITH ENVIRONMENTAL CABLE ADAPTER AND MECHANICAL CABLE CLAMP

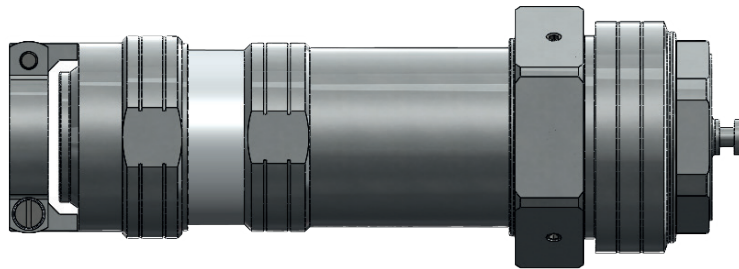
How To Order							
Sample Part Number	927-072	-016	-36-66	P1	F9	Y	/A
Series	927-072						
Style	-016 = Mechanical Cable Clamp						
Shell Size - Insert Arrangement	See pages 22- 31						
Contact Type and Plating	P = Pin Contact, S = Socket Contact 1 = Silver Plated, 2 = Gold Plated						
Shell Material and Finish	F9 = Aluminium Alloy, Anodize Hardcoat						
Alternate Key Position	X, Y, Z, W (See Table on page 32) Omit for normal position						
Cable Range	A, B, C (See Table next page)						



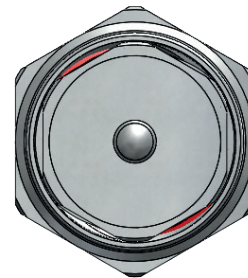
Shell Size	Dimensions												
	A1	B	C	D1	E1		F1	H	K1	K2	K3	L1	M
					Min.	Max.							
10SL	146	55.6	46	40.7	4.50	11.12	28.0	41	24	22	27	132	25
14S	*	*	*	*	*	*	*	*	*	*	*	*	*
16	184	63.9	54	42.8	8.0	19.0	40.0	49	30	32	38	169	34
18	185	63.9	59	45.2	9.60	23.80	43.0	52	34	36	41	170	38.2
28	226	63.9	72	56.7	15.5	35.0	62.0	65	48	48	60	211	54
36	250	63.9	88	60	23.40	41.25	68.0	78	60	61	65	235	63.5

(\*) Please contact the factory.

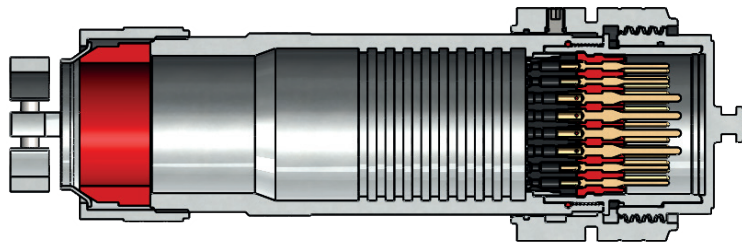
Left view



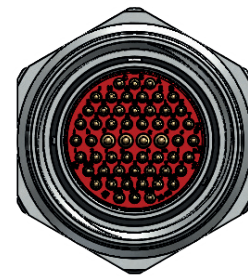
Front view



Section view



Front view without cap



Cable Range Dimensions for Mechanical Cable Clamp			
Shell Size	Cable Type (1)	Cable Range Designator	Cable Jacket Range [mm] (2)
36	Unarmored cable	A	29,90 to 41,25
		B	23,40 to 35,00
28	Unarmored cable	A	28,50 to 35,00
		B	23,40 to 31,75
		C	15,50 to 23,80
18	Unarmored cable	A	15,50 to 23,80
		B	11,30 to 19,00
		C	9,60 to 15,90
16	Unarmored cable	A	11,30 to 19,00
		B	9,60 to 15,87
		C	8,00 to 13,48
10SL	Unarmored cable	A	5,84 to 11,12
		B	4,50 to 7,93

(1) Armoured cables may be used but the armour cannot be engaged.

(2) It is advisable to use reduction sleeves for lower values of cable diameter within cable range.