



SERIES 80 MIGHTY MOUSE CONNECTORS Accessories, Backshells, and Tools



Series 800, 801, 803, 804, and 805 Rotatable Coupling, Non-Environmental, Shield Termination



447MS981

Series 80 Mighty Mouse, Band-In-A-Can backshell utilizes a secondary adapter that covers the banding area, along with providing options for strain relief. This backshell combines the efficiency and convenience of band style shield termination with a protective backshell which protects the shield termination area from damage due to rough handling and provides for robust cable strain-relief. Recommended for use in severe application environments where banding is the preferred shield termination technology. For Series 800, 801, 803, 804, and 805 Mighty Mouse connectors

How To Order						
Sample Part Number	447MS981	M	08	06	-6	K
Series	447MS981 = Straight Entry					
Shell Material and Finish	See Table I					
Size Code (See Table II)	05, 06, 11, 07, 08, 09, 10, 12, 13, 14, 16, 17					
Cable Entry Code (See Table III)	02, 25, 03, 35, 04, 05, 06, 07, 08, 09, 10, 11, 12, 13, 14, 15, 16					
Length	Specify length in 1/8 inch increments (e.g. 12 = 1.50 inches). Minimum Length = .75					
Band Option	B = 1/8" Wide Straight Band K = 1/8" Wide Precoiled Band Omit = No Band Supplied					

NOTES

- Material/Finish
 - Adapter, coupling nut, rear nut: aluminum alloy/per part number development
 - Saddle: stainless steel/per part number development
 - Hardware: stainless steel/passivated

Table I: Material/Finish	
Sym	Description
UCR	Aluminum / Zinc-Cobalt Black
M	Aluminum / Electroless Nickel
NF	Aluminum / Cadmium with Olive Drab
ZN	Aluminum / Zinc-Nickel with Olive Drab Chromate
ZNU	Aluminum / Zinc-Nickel with Black Chromate
MT	Aluminum / Nickel-PTFE
Z1	Stainless Steel / Passivated

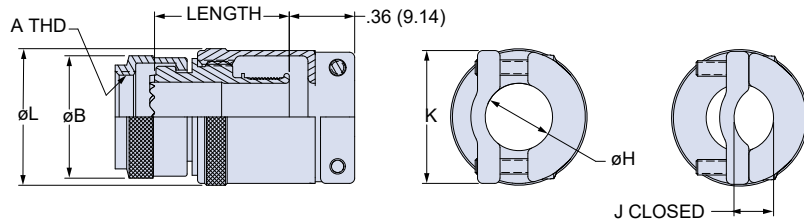


Table II: Size Code									
Size Code	800	801	803	804	805	A Thread UNEF - 2B	Ø B Max		Max Entry
							In.	mm.	
05	5	5	5	5	-	.2500-32	0.470	11.94	25
06	6	6	6	6	-	.3125-32	0.530	13.46	35
11	-	-	-	-	8	.3750-32	0.570	14.48	04
07	7	7	7	7	9	.4375-28	0.637	16.18	05
08	8	8	8	8	10	.5000-28	0.700	17.78	06
09	9	9	9	9	11	.5625-24	0.758	19.25	07
10	10	10	10	10	12	.6250-24	0.819	20.80	08
12	12	13	12	12	-	.6875-24	0.896	22.76	09
13	-	-	-	-	15	.7500-20	0.930	23.62	10
14	-	16,17	14,15	14,15	18,19	.9375-20	1.137	28.88	13
16	-	19	-	-	21	1.0625-18	1.250	31.75	14
17	-	21	-	-	23	1.1875-18	1.387	35.48	16

Table III: Cable Entry Code								
Entry Code	Ø H		J Closed		K		Ø L Max	
	in.	mm.	in.	mm.	in.	mm.	in.	mm.
02	.125	3.18	.075	1.91	.490	12.45	.520	13.21
25	.156	3.96	.094	2.39	.520	13.21	.550	13.97
03	.188	4.78	.113	2.87	.550	13.97	.580	14.73
35	.219	5.56	.131	3.33	.580	14.73	.610	15.49
04	.250	6.35	.150	3.81	.615	15.62	.645	16.38
05	.313	7.95	.188	4.78	.680	17.27	.710	18.03
06	.375	9.53	.225	5.72	.740	18.80	.770	19.56
07	.438	11.13	.263	6.68	.800	20.32	.830	21.08
08	.500	12.70	.300	7.62	.865	21.97	.895	22.73
09	.563	14.30	.375	9.19	.990	24.26	1.030	25.24
10	.625	15.88	.417	10.22	1.050	25.73	1.090	26.71
11	.688	17.48	.459	11.25	1.115	27.32	1.155	28.30
12	.750	19.05	.500	12.25	1.175	28.79	1.215	29.77
13	.813	20.65	.542	13.28	1.240	30.38	1.280	31.36
14	.875	22.23	.583	14.28	1.300	31.85	1.340	32.83
15	.938	23.83	.625	15.31	1.365	33.44	1.405	34.42
16	1.000	25.40	.667	16.34	1.425	34.91	1.465	35.89