

SERIES 80 MIGHTY MOUSE CONNECTORS Accessories, Backshells, and Tools



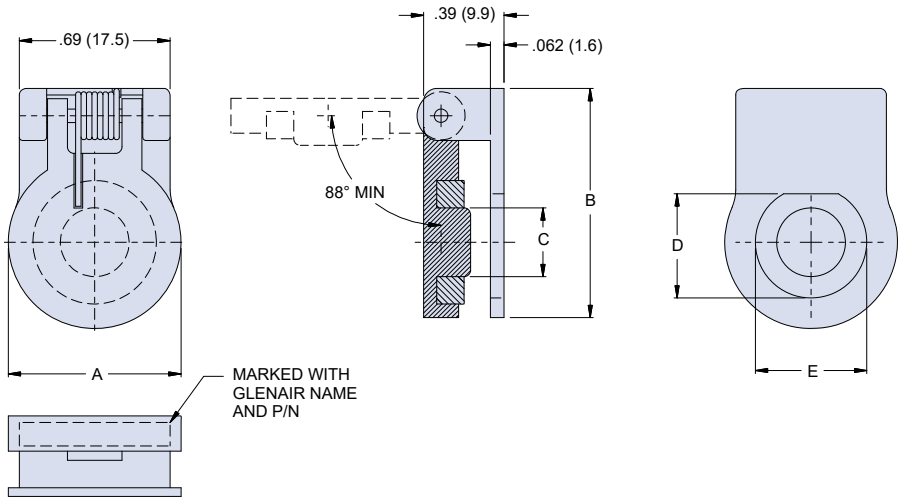
Series 804 Mighty Mouse Jam-Nut Receptacle Push-Pull, Spring-Loaded ProSeal™ Cover

Spring-Loaded Cover for Series 804 Jam Nut Receptacles



"Flop lid" snaps shut when cable is disconnected. Silicone gasket provides watertight seal when closed. Fits standard Series 804 rear-mount jam nut receptacles. For .057/.067 inch (1.45/1.70 mm) panel thickness. Aluminum alloy or stainless steel.

Shell Size	Part Number				
	Aluminum				Stainless Steel
	Electroless Nickel	Cadmium/Olive Drab	Nickel-PTFE	Black Zinc-Nickel	Passivated
5	667-282M05	667-282NF05	667-282MT05	667-282ZNU05	667-282Z105
6	667-282M06	667-282NF06	667-282MT06	667-282ZNU06	667-282Z106
7	667-282M07	667-282NF07	667-282MT07	667-282ZNU07	667-282Z107
8	667-282M08	667-282NF08	667-282MT08	667-282ZNU08	667-282Z108
9	667-282M09	667-282NF09	667-282MT09	667-282ZNU09	667-282Z109
10	667-282M10	667-282NF10	667-282MT10	667-282ZNU10	667-282Z110
11	667-282M11	667-282NF11	667-282MT11	667-282ZNU11	667-282Z111
12	667-282M12	667-282NF12	667-282MT12	667-282ZNU12	667-282Z112
14	667-282M14	667-282NF14	667-282MT14	667-282ZNU14	667-282Z114
15	667-282M15	667-282NF15	667-282MT15	667-282ZNU15	667-282Z115



Shell Size	Dimensions									
	A		B		C		D Flat		E Dia	
	In.	mm.	In.	mm.	In.	mm.	In.	mm.	In.	mm.
5	.63	16.0	.93	23.6	.251	6.4	.427/.423	10.8/10.74	.443	11.3
6	.69	17.5	.99	25.1	.315	8.0	.479/.475	12.2/12.07	.505	12.8
7	.82	20.8	1.11	28.2	.383	9.7	.606/.601	15.4/15.27	.630	16.0
8	.82	20.8	1.11	28.2	.429	10.9	.606/.601	15.4/15.27	.630	16.0
9	.88	22.4	1.18	30.0	.485	12.3	.667/.663	16.9/16.84	.693	17.6
10	.94	23.9	1.24	31.5	.560	14.2	.734/.729	18.6/18.52	.755	19.2
11	1.00	25.4	1.30	33.02	.619	15.7	.801/.796	20.3/20.22	.820	20.8
12	1.07	27.2	1.36	34.5	.678	17.2	.855/.851	21.7/21.62	.880	22.4
14	1.19	30.2	1.49	37.8	.801	20.3	.98/.976	24.9/24.79	1.005	25.5
15	1.25	31.75	1.55	39.37	.860	21.8	1.041/1.037	26.4/26.34	1.067	27.1

NOTES

1. Materials and Finishes
2. Cover, Housing: Aluminum Alloy or Stainless Steel
3. Gasket: Sponge Silicone Rubber
4. Sleeve: Delrin
5. Spring, Shaft: Stainless Steel