

SERIES 801 DOUBLE-START ACME THREAD Mighty Mouse Connectors and Cables



Panel Plug with Crimp Contacts or PCB Panel Plug with Non-removable Contacts



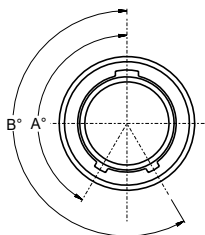
Series 801 Mighty Mouse Panel Plug features a double-start modified stub ACME mating thread for improved protection against cross-mating and thread damage. Connector shells are machined aluminum or stainless steel. Available with crimp type rear-release

contacts for 801-113. Select 801-114 for PCB applications available with non-removable PC tails or solder cup contacts for attachment to rigid boards or direct wire attachment. Available in shell sizes 5 through 21 in 61 contact arrangements.

How To Order

Sample Part Number	801-114	-26	ZNU	9-19	P	A
Series	801-113 = Connector with Crimp Type Contacts 801-114 = PCB Connector with Non-Removable Contacts					
Shell Style	-26 = Self Locking Panel Plug Connector with Ratchet Mechanism					
Material and Finish	M = Aluminum / Electroless Nickel MT = Aluminum / Nickel-PTFE NF = Aluminum / Cadmium with Olive Drab Chromate ZNU = Aluminum / Zinc-Nickel with Black Chromate Z1 = Stainless Steel / Passivated					
Shell Size - Insert Arrangement	See Contact Arrangements page E-7					
Contact Type	801-113 Options A = Pin Connector, Less Contacts P = Pin, Crimp B = Socket Connector, Less Contacts S = Socket, Crimp 801-114 Options E = Pin, Solder Cup P = Pin, PC Tail F = Socket, Solder Cup S = Socket, PC Tail (See Table II) Connectors with contacts are supplied with crimp contacts. Contacts not installed. For coax or contacts, order contacts separately and request pin or socket connector without contacts.					
Polarization (See Table I)	A = Normal B = Pos. B C = Pos. C D = Pos. D E = Pos. E F = Pos. F					

Table I: Key Positions

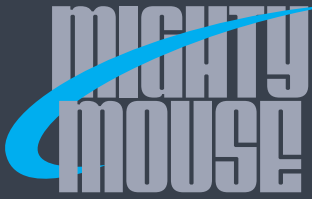


Position	A°	B°
A	150°	210°
B	75°	210°
C	95°	230°
D	140°	275°
E	75°	275°
F	95°	210°

NOTES

- 801-113 contacts are crimp type, and used in a rear release retention system
801-114 contacts are potted in position and non removable
- Plug mates with all quick coupling high density receptacle connectors with same polarization and opposite contact gender (801-003 through 801-006 and 801-009 through 801-012)
- Connectors supplied with standard crimp contacts. For coax or other special contacts, order connector less contacts (Contact style A or B) and order contacts separately
- Material / finish:
 - Shell, lock ring, coupling nut: Aluminum Alloy or CRES; see How to Order Table
 - Insulator: High Grade Rigid Dielectric / N.A.
 - Interfacial seal, grommet seal: fluorosilicone / N.A.
 - Contact: copper alloy / gold plate per ASTM B 488, Type II, Code C, Class 1.25, over a suitable underplate

SERIES 801 DOUBLE-START MATING

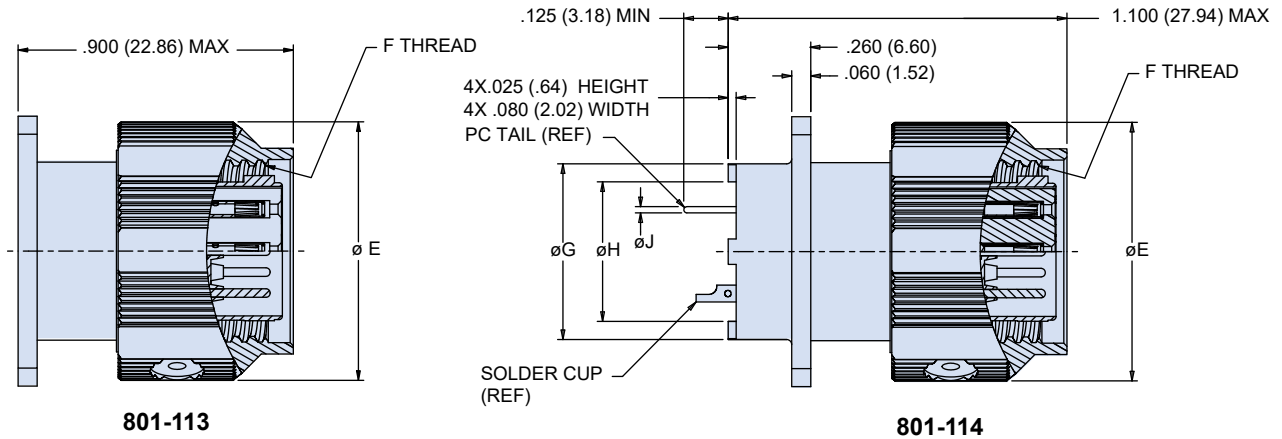


SERIES 801 DOUBLE-START ACME THREAD Mighty Mouse Connectors and Cables



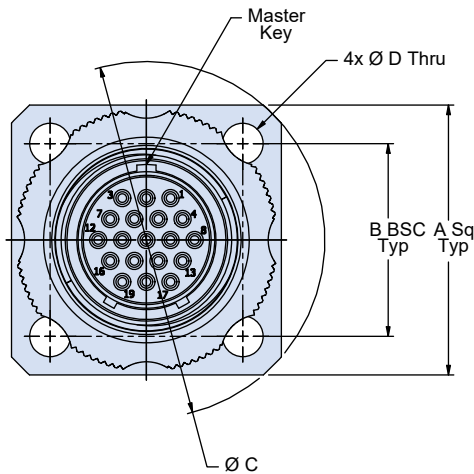
Panel Plug with Crimp Contacts or PCB Panel Plug with Non-removable Contacts

PANEL PLUG - SHELL SIZE 26



801-113

801-114



PC Tails Dimensions	
Contact Size	Ø J
#23	.018/.022
#16	.060/.064
#12	.092/.096

Dimensions								
Shell Size	A Sq	B Bsc	Ø C	Ø D	Ø E	F Thread	Ø G	Ø H
5	.590 (14.99)	.423 (10.74)	.750 (19.05)	.093 (2.36)	.65 (16.51)	.3125-.05P-.1L-2B	.244 (6.20)	.175 (4.44)
6	.590 (14.99)	.423 (10.74)	.750 (19.05)	.093 (2.36)	.65 (16.51)	.3750-.05P-.1L-2B	.330 (8.38)	.238 (6.05)
7	.650 (16.51)	.483 (12.27)	.850 (21.59)	.093 (2.36)	.69 (17.53)	.4375-.05P-.1L-2B	.432 (10.97)	.327 (8.31)
8	.712 (18.08)	.545 (13.84)	.938 (23.83)	.093 (2.36)	.79 (20.07)	.5000-.05P-.1L-2B	.493 (12.52)	.388 (9.86)
9	.850 (21.59)	.607 (15.42)	1.125 (28.58)	.128 (3.25)	.83 (21.08)	.5625-.05P-.1L-2B	.551 (14.00)	.446 (11.33)
10	.890 (22.61)	.670 (17.02)	1.188 (30.18)	.128 (3.25)	.92 (23.37)	.6250-.05P-.1L-2B	.620 (15.75)	.516 (13.11)
11	.935 (23.75)	.715 (18.16)	1.250 (31.75)	.128 (3.25)	1.00 (25.40)	.6875-.05P-.1L-2B	.662 (16.81)	.557 (14.15)
13	1.030 (26.16)	.812 (20.62)	1.375 (34.92)	.128 (3.25)	1.10 (27.94)	.8125-.1P-.2L-2B	.703 (17.86)	.599 (15.21)
16	1.219 (30.96)	.981 (24.92)	1.625 (41.28)	.128 (3.25)	1.34 (34.04)	1.0000-.1P-.2L-2B	.863 (21.92)	.759 (19.28)
17	1.280 (32.51)	1.060 (26.92)	1.700 (43.18)	.128 (3.25)	1.45 (36.83)	1.0625-.1P-.2L-2B	.912 (23.16)	.808 (20.52)
19	1.432 (36.37)	1.191 (30.25)	1.900 (48.26)	.128 (3.25)	1.50 (38.10)	1.1875-.1P-.2L-2B	1.018 (25.86)	.910 (23.11)
21	1.565 (39.75)	1.322 (33.58)	2.100 (53.34)	.128 (3.25)	1.65 (41.91)	1.3125-.1P-.2L-2B	1.170 (29.72)	1.061 (26.95)