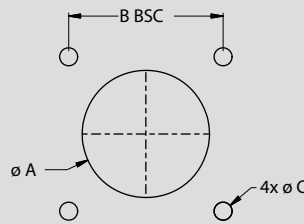
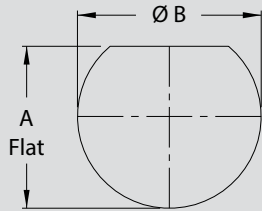


# SERIES 801 DOUBLE-START ACME THREAD Mighty Mouse Connectors and Cables



## Panel Cut-Out Dimensions and Key / Keyway Positions and Polarization

### PANEL CUT-OUT POSITIONS



Jam-Nut, Rear Panel Mount		
Shell Size	A Flat	Ø B
5	.358 (9.09)	.385 (9.78)
	.354 (8.99)	.380 (9.65)
6	.418 (10.62)	.448 (11.38)
	.414 (10.52)	.443 (11.25)
7	.544 (13.82)	.572 (14.53)
	.540 (13.72)	.567 (14.40)
8	.544 (13.82)	.572 (14.53)
	.540 (13.72)	.567 (14.40)
9	.604 (15.34)	.635 (16.13)
	.600 (15.24)	.630 (16.00)
10	.668 (16.97)	.698 (17.73)
	.664 (16.87)	.693 (17.60)
11	.726 (18.44)	.760 (19.30)
	.722 (18.34)	.755 (19.18)
13	.853 (21.67)	.885 (22.48)
	.849 (21.56)	.880 (22.35)
16	1.030 (26.16)	1.072 (27.23)
	1.026 (26.06)	1.067 (27.10)
17	1.104 (28.04)	1.135 (28.83)
	1.100 (27.94)	1.130 (28.70)
19	1.235 (31.37)	1.260 (32.00)
	1.231 (31.27)	1.255 (31.88)
21	1.355 (34.42)	1.385 (35.18)
	1.351 (34.32)	1.380 (35.05)

Square Flange			
Shell Size	Ø A	B BSC	Ø C
5	.328 (8.33)	.363 (9.22)	.096 (2.44) .091 (2.31)
	.390 (9.91)	.423 (10.74)	.096 (2.44) .091 (2.31)
7	.453 (11.51)	.483 (12.27)	.096 (2.44) .091 (2.31)
	.515 (13.08)	.545 (13.84)	.096 (2.44) .091 (2.31)
9	.578 (14.68)	.607 (15.42)	.130 (3.30) .126 (3.20)
	.640 (16.26)	.670 (17.02)	.130 (3.30) .126 (3.20)
11	.703 (17.86)	.715 (18.16)	.130 (3.30) .126 (3.20)
	.828 (21.03)	.812 (20.62)	.130 (3.30) .126 (3.20)
16	1.015 (25.78)	.981 (24.92)	.130 (3.30) .126 (3.20)
	1.078 (27.38)	1.060 (26.92)	.130 (3.30) .126 (3.20)
19	1.203 (30.56)	1.191 (30.25)	.130 (3.30) .126 (3.20)
	1.328 (33.73)	1.322 (33.58)	.130 (3.30) .126 (3.20)

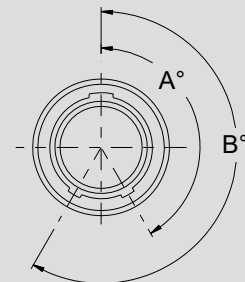
### POLARIZATION

#### Plug Key Positions



Position	A°	B°
A	150°	210°
B	75°	210°
C	95°	230°
D	140°	275°
E	75°	275°
F	95°	210°

#### Receptacle Keyway Positions



Position	A°	B°
A	150°	210°
B	75°	210°
C	95°	230°
D	140°	275°
E	75°	275°
F	95°	210°

SERIES 801 DOUBLE-START MATING