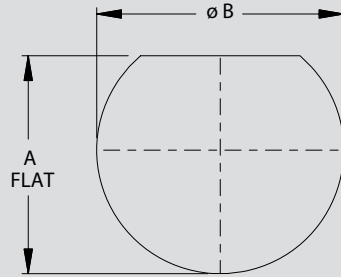


# SERIES 811 HIGH-DENSITY DOUBLE-START Mighty Mouse Connectors and Cables Panel Cutouts

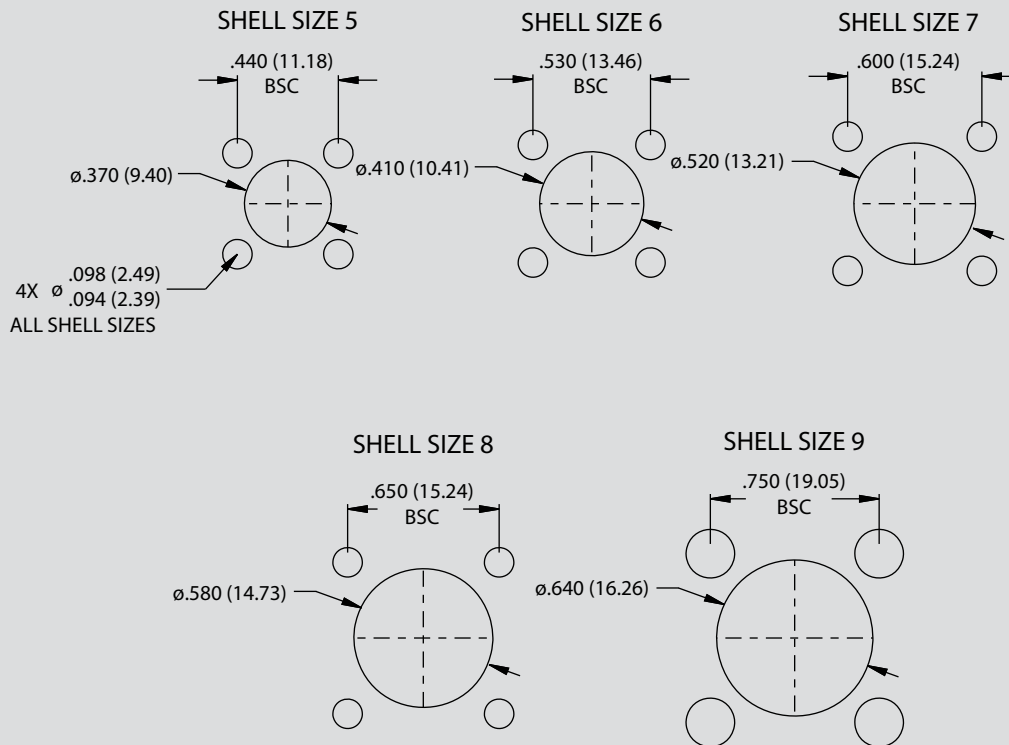


## SERIES 811 REAR PANEL MOUNT, JAM-NUT PANEL CUTOUT DIMENSIONS



| Dimensions |              |              |
|------------|--------------|--------------|
| Shell Size | Ø A Flat     | Ø B          |
| 5          | .358 (9.09)  | .387 (9.83)  |
|            | .354 (8.99)  | .383 (9.73)  |
| 6          | .418 (10.62) | .449 (11.40) |
|            | .414 (10.52) | .445 (11.30) |
| 7          | .544 (13.82) | .574 (14.58) |
|            | .540 (13.72) | .570 (14.48) |
| 8          | .544 (13.82) | .574 (14.58) |
|            | .540 (13.72) | .570 (14.48) |
| 9          | .604 (15.34) | .637 (16.18) |
|            | .600 (15.24) | .633 (16.08) |

## SERIES 811 REAR PANEL MOUNT, JAM-NUT PANEL CUTOUT DIMENSIONS



SERIES 811 HIGH-DENSITY