

# Series 806

## Mighty Mouse Mil-Aero Connectors

600-246 Spanner tool, 809-444 Low Profile Jam-nut



### Series 806 Connector Spanner Tools

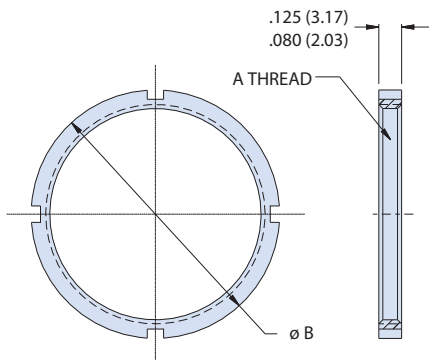
Use these tools to tighten Series 80 jam nuts. 3/8" square drive for use with torque wrenches. Heat treated steel, nickel plated.



Shell Size	Socket Drive	Recommended Backshell Tightening Torque In-Lbs.		Jam Nut Thread Size Reference
		Min.	Max.	
7	<a href="#">600-246-7</a>	20	25	M13 x 1.0-6H
8	<a href="#">600-246-8</a>	20	25	M15 x 1.0-6H
9	<a href="#">600-246-9</a>	20	25	M16 x 1.0-6H
10	<a href="#">600-246-10</a>	25	30	M18 x 1.0-6H
11	<a href="#">600-246-11</a>	25	30	M19 x 1.0-6H
12	<a href="#">600-246-12</a>	25	30	M21 x 1.0-6H
14	<a href="#">600-246-14</a>	25	30	M24 x 1.0-6H
16	<a href="#">600-246-16</a>	25	30	M27 x 1.0-6H
18	<a href="#">600-246-18</a>	25	30	M30 x 1.0-6H
20	<a href="#">600-246-20</a>	25	30	M34 x 1.0-6H
22	<a href="#">600-246-22</a>	25	30	M37 x 1.0-6H
24	<a href="#">600-246-24</a>	25	30	M41 x 1.0-6H
<b>All Shell Sizes</b>	<a href="#">600-246-KIT</a>	25	30	All Listed Above

### Series 806 Low Profile Jam-nut

Replace lost or damaged Series 80 low profile jam nuts. Use Glenair spanner tool 600-246.



Dash No.	Thread A	B ±.020 Dia.	Spanner Tool
7	M13 x 1.0-6H	.705 (17.91)	600-246-7
8	M15 x 1.0-6H	.766 (19.46)	600-246-8
9	M16 x 1.0-6H	.829 (21.06)	600-246-9
10	M18 x 1.0-6H	.891 (22.63)	600-246-10
11	M19 x 1.0-6H	.954 (24.23)	600-246-11
12	M21 x 1.0-6H	1.016 (25.81)	600-246-12
14	M24 x 1.0-6H	1.149 (29.18)	600-246-14
16	M27 x 1.0-6H	1.272 (32.31)	600-246-16
18	M30 x 1.0-6H	1.397 (35.48)	600-246-18
20	M34 x 1.0-6H	1.567 (39.80)	600-246-20
22	M37 x 1.0-6H	1.690 (42.93)	600-246-22
24	M41 x 1.0-6H	1.880 (47.75)	600-246-24

Class	Material	Finish Description
ME	Aluminum	Electroless nickel
MT		Nickel-PTFE
NF		Olive drab cadmium over electroless nickel finish
ZR		Zinc nickel black over electroless nickel. RoHS compliant
Z1	Stainless	Passivate
ZL	Steel	Electrodeposited nickel

### Part Number Development

<b>809-444</b>	<b>-ME</b>	<b>8</b>
Product Series and Basic Number	Material and Finish See Table II	Dash Number, See Table I