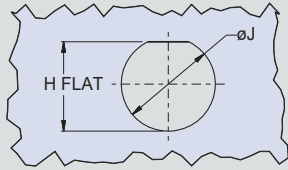


Series 802 AquaMouse™ 3500 PSI Submersibles

Panel Cutout Dimensions and Polarization

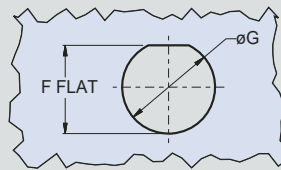
Panel Cutout Dimensions

**Jam-Nut, Front Panel Mount
Panel Cutout Dimensions**



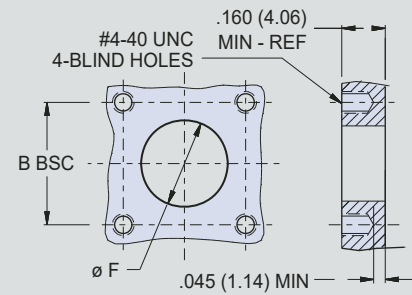
Shell Size	H Flat +.005 (.13) -.000 (-.00)	Ø J
5	.286 (7.26)	.322 (8.18)
6	.412 (10.46)	.448 (11.38)
7	.474 (12.04)	.510 (12.95)
8	.536 (13.61)	.572 (14.53)
9	.599 (15.21)	.635 (16.13)
10	.661 (16.79)	.697 (17.70)
12	.724 (18.39)	.760 (19.30)
14	.898 (22.81)	.948 (24.08)
15	.960 (24.38)	1.010 (25.65)
19	1.091 (27.71)	1.135 (28.83)
21	1.263 (32.08)	1.322 (33.58)

**Jam-Nut, Rear Panel Mount
Panel Cutout Dimensions**



Shell Size	F Flat +.005 (+.13) -.000 (-.00)	Ø G
5	.474 (12.04)	.510 (12.95)
6	.599 (15.21)	.635 (16.13)
7	.661 (16.79)	.697 (17.70)
8	.724 (18.39)	.760 (19.30)
9	.786 (19.96)	.822 (20.88)
10	.835 (21.21)	.885 (22.48)
12	.898 (22.81)	.948 (24.08)
14	1.085 (27.56)	1.135 (28.83)
15	1.148 (29.16)	1.198 (30.43)
19	1.357 (34.47)	1.385 (35.18)
21	1.471 (37.36)	1.510 (38.35)

**Square Flange, Front Panel Mount
Panel Cutout Dimensions**

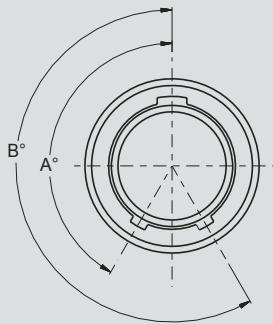


Shell size	B BSC	Ø F
5	.500 (12.70)	.327 (8.31)
6	.625 (15.88)	.390 (9.91)
7	.688 (17.48)	.515 (13.08)
8	.750 (19.05)	.577 (14.66)
9	.812 (20.62)	.640 (16.26)
10	.875 (22.23)	.702 (17.83)
12	.938 (23.83)	.765 (19.43)
14	1.125 (28.58)	.953 (24.21)
15	1.188 (30.18)	1.015 (25.78)
21	1.375 (34.92)	1.312 (33.32)

E

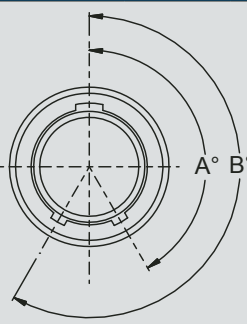
Polarization

Plug Key Positions



Position	A°	B°
Normal (A)	150°	210°
B	75°	210°
C	95°	230°
D	140°	275°
E	75°	275°
F	95°	210°

Receptacle Keyway Positions



Position	A°	B°
A (Normal)	150°	210°
B	75°	210°
C	95°	230°
D	140°	275°
E	75°	275°
F	95°	210°

Dimensions in Inches (millimeters) are subject to change without notice.