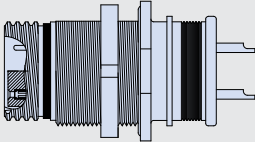


# Series 80 Mighty Mouse Filter Connector Table of Contents and Introduction



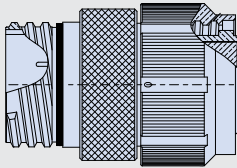
## PRODUCT SELECTION GUIDE



### Series 801 Mighty Mouse Filter Connector

High Density, Quick Coupling Threads, Square Flange or Jam Nut

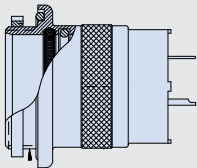
Page J-8



### Series 801 Mighty Mouse Filter Connector Adapter

High Density, Quick Coupling Threads

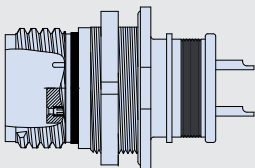
Page J-12



### Series 804 Mighty Mouse Filter Connector

Jam Nut Receptacle, Push-Pull Quick Disconnect

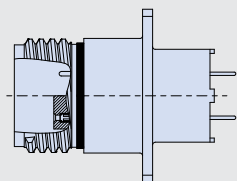
Page J-15



### Series 805 Mighty Mouse Filter Connector

Receptacles with Triple-Start ACME Coupling Threads,  
Square Flange or Jam Nut with Solder Cup Contacts and Banding Platform

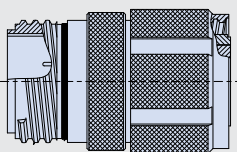
Page J-16



### Series 805 Mighty Mouse Filter Connector

Receptacles with Triple-Start ACME Coupling Threads,  
PCB Contacts

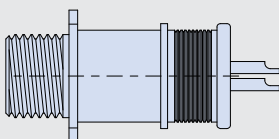
Page J-17



### Series 805 Mighty Mouse Filter Connector Adapter

with Triple-Start ACME Coupling Threads

Page J-20



### Series 800 Mighty Mouse Filter Connector

Receptacles with UN Mating Threads, Square Flange or Jam Nut

Page J-22

Dimensions in inches (millimeters) and are subject to change without notice.

© 2014 Glenair, Inc.

Series 80 Mighty Mouse

U.S. CAGE Code 06324

Printed in U.S.A.