

Series 806 Mil-Aero Connectors

Series 806 Backshell, Adapter and Strain Relief Selection Guide

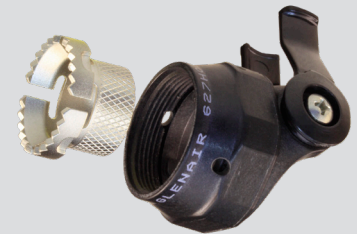
STRAIN RELIEF CLAMPS



620V081
Composite Strain Relief Clamp
Straight, 45° and 90°
[Page 167](#)



620V080
Strain Relief Clamp
Aluminum or SST, self-locking
[Page 180](#)



627V234
Low-Profile Swing-Arm® Flex with Drop-in EMI Adapter
[Page 166](#)

EMI RFI BANDING ADAPTERS



440V191
Band/Boot Adapters
Aluminum or stainless steel
[Page 181](#)



440V202
Composite Band/Boot Adapters
These composite self-locking adapters are lightweight and corrosion resistant
[Page 169](#)



317V111
Piggyback Boot Adapter
These composite, self-locking backshells have a drop-in banding adapter and are supplied with pre-attached shrink boot
[Page 173](#)

EMI BACKSHELLS



380V143
EMI Backshell
These self-locking backshells are available in aluminum or stainless steel
[Page 174](#)



387V243
Composite EMI
Ground rings for shield termination
[Page 168](#)



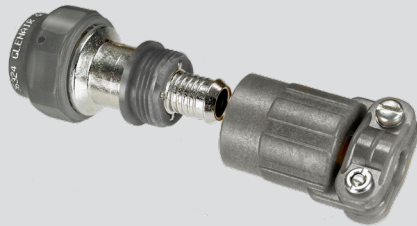
390V091
EMI Environmental
Aluminum or SST. Environmental
[Page 176](#)

Series 806 Mil-Aero Connectors



Series 806 Backshell, Adapter and Strain Relief Selection Guide

"BAND-IN-A-CAN" BANDING ADAPTERS



4470V1061

Composite Band-in-a-Can

Use with Band-Master ATS® shield termination bands. Saddle clamps provide cable strain relief. Non-environmental.

[Page 171](#)



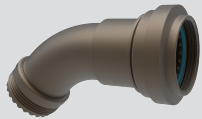
443V039

Aluminum or SST Band-in-a-Can

Use with Band-Master ATS® shield termination bands. Environmentally protected with O-rings.

[Page 178](#)

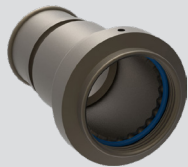
SIZE #8 CONTACT, EXTENDED LENGTH BACKSHELLS



320V030

**Environmental
Extended Adapter**

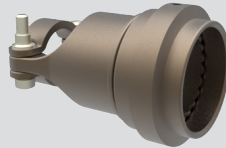
[Page 183](#)



440V233

**Environmental
Banding Backshell**

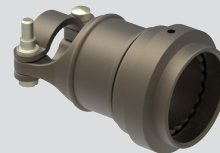
[Page 184](#)



620VS090

**Strain Relief Cable
Clamp Backshell**

[Page 186](#)



440VS232

**EMI/RFI Cable
Clamp Backshell
with Banding
Platform**

[Page 187](#)



443V042

**EMI/RFI Cable
Clamp Backshell
and Band-in-a-Can
Banding Platform**

[Page 188](#)

COMPOSITE QWIK-TY



457V048

**Composite Qwik-Ty with Drop-In
EMI Adapter**

Drop-in adapter terminates to cable braid shield.

[Page 165](#)

SHORTING CAP



340VS035

Shorting Backshell

[Page 190](#)

SHRINK BOOTS



809-060

Thin Lip Shrink Boots

[Page 191](#)