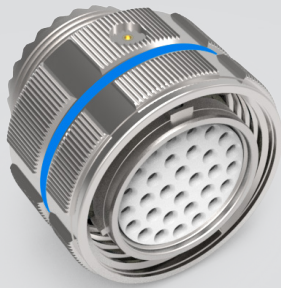


# Series 806 Mil-Aero Connectors

## 806-042 ThermaRex HT Plug



### Features

- Operating temperature -65° to 300°C
- Triple-start stub ACME mating thread
- High density #20HD and #22HD arrangements for reduced size and weight plus #16, #12 and #8 standard and hybrid Crown Ring contact layouts
- Aerospace-grade materials, construction
- Band platform or accessory threads

### Specifications

- Operating temperature: Finish Z1: -65°C to +300°C
- Dielectric withstanding voltage  
#22HD layouts: 1300 VAC  
#20HD layouts: 1800 VAC  
#16 layouts: varies, contact factory  
#12 layouts: varies, contact factory  
#8 layouts: varies, contact factory
- Mating durability: 500 cycles
- Mechanical shock: EIA-364-27, 300g.
- Vibration (sine): MIL-DTL-38999M, 60g.
- Vibration (random) EIA-364-28 Condition VI, Letter J, 43.92 Grms, +200°C
- High Impact shock: MIL-S-901 Grade A
- Humidity: EIA-364-31 Method 4
- Salt spray (dynamic): EIA-364-26, 500 hours
- Fluid immersion: EIA-364-10
- Altitude immersion: EIA-364-03 75,000 feet altitude
- Indirect Lightning Strike: EIA-364-75 Type B Level 2 10kA Peak

### Connector Construction

- Plug barrel, coupling nut: passivated CRES
- Pin contact: copper alloy, gold plate
- Skt contact: copper alloy, gold plate; skt hood: CRES; crown ring: spring grade CRES
- Ground spring: spring grade CRES/nickel plate
- Insulator: high grade ceramic dielectric
- Interfacial seal, grommet: high-temp silicone

High-temperature 806-042 ThermaRex cable plugs are rated to perform from -65° to 300°C. Intended for use in high-temperature harsh application areas such as engine aircraft zones subject to high heat, altitude, and temperature extremes while providing size and weight savings compared to conventional aerospace-grade circular connectors. Rugged ratchet mechanism and unique triple-start mating thread provide improved de-coupling resistance under vibration. Available with integral Nano Band platform or with metric accessory threads, these connectors feature snap-in, rear release Crown Ring contacts (shielded, high-speed, or RF contacts not supported).

How To Order ThermaRex Series 806 Mil-Aero Plug						
SAMPLE PART NUMBER		806-042	Z1	11-19	S	M A
Series / Basic Part No.	806-042 High-temperature ThermaRex Series 806 plug					
Material/Finish	Z1 = Passivated CRES					
Shell Size/Insert Arr.	See Table I					
Contact Style	P = Pin S = Socket Crown Ring contacts mandatory.					
Shell Style	M = Metric accessory thread B = Banding platform					
Polarization	A, B, C, D, E, F					

Table I: Shell Size - Insert Arrangement

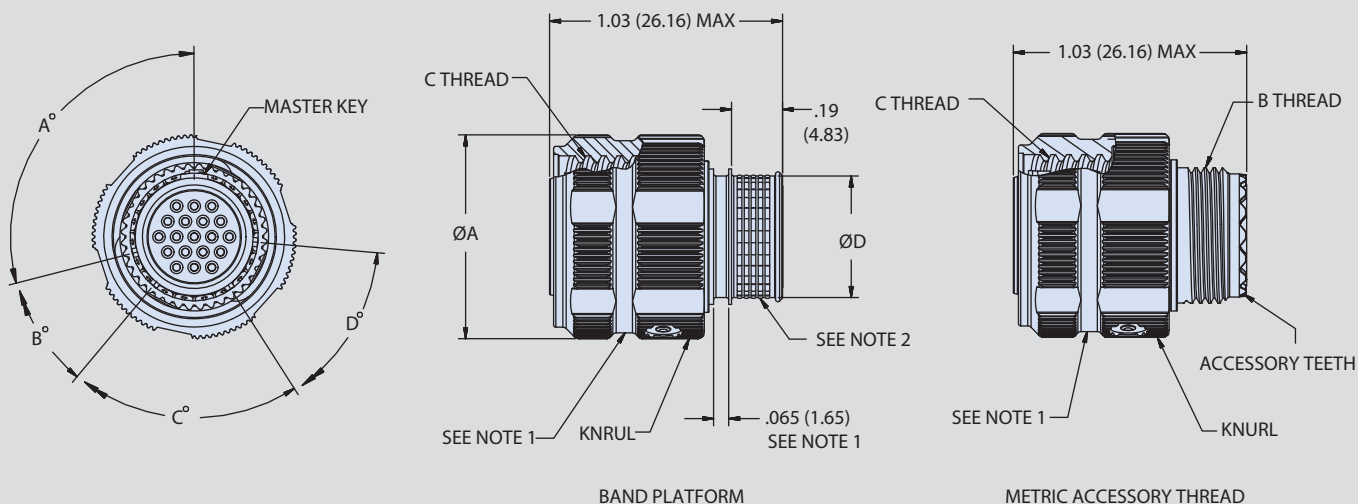
Contact Layout	Number of Contacts					Contact Layout	Number of Contacts								
	22HD	20HD	16	12	8		22HD	20HD	16	12	8				
7-3	3					22-69	69				16-2				2
8-4	4					24-92	92				18-3				3
8-7	7					8-1		1			20-4				4
9-11	11					10-2		2			22-5				5
10-15	15					11-4		4			24-8				8
11-19	19					12-5		5			10-8A	6		2	
12-26	26					14-7		7			11-13	11		2	
14-39	39					16-12		12			12-27	26		1	
16-60	60					18-15		15			14-21	17		4	
18-85	85					20-22		22			16-41	37		4	
20-110	110					22-24		24			18-59	55		4	
22-140	140					24-35		35			11-14	13			1
24-186	186					9-1			1		12-14	12			2
8-3		3				12-2			2		14-22	20			2
9-5		5				14-3			3		12-14	12			2
10-8		8				16-4			4		16-42	40			2
11-10		10				16-7			7		18-62	60			2
12-15		15				18-8			8		14-20A	19			1
14-20		20				20-11			11		16-22	20			2
16-31		31				22-13			13		18-21	18			3
18-41		41				24-19			19		20-28	24			4
20-55		55				10-1			1		22-44	40			4
											24-97	93			4

# HIGH-TEMPERATURE, MICRO MINIATURE CIRCULAR

## Series 806

### Mil-Aero Connectors

#### 806-042 ThermaRex HT Plug



806-042 Dimensions				
Shell Size	ØA Max	B Thread	Mating Thd Triple Start Modified 60 Stub Acme	ØD
7	0.606 (15.39)	M8 X 1.0-6g-.100R	0.4375-.067P-.2L-TS-2B	0.267 (6.78)
8	0.676 (17.17)	M10 X 1.0-6g-.100R	0.500-.067P-.2L-TS-2B	0.327 (8.31)
9	0.771 (19.58)	M12 X 1.0-6g-.100R	0.562-.067P-.2L-TS-2B	0.406 (10.31)
10	0.832 (21.13)	M14 X 1.0-6g-.100R	0.625-.067P-.2L-TS-2B	0.484 (12.29)
11	0.890 (22.61)	M15 X 1.0-6g-.100R	0.688-.067P-.2L-TS-2B	0.524 (13.31)
12	0.950 (24.13)	M17 X 1.0-6g-.100R	0.750-.067P-.2L-TS-2B	0.603 (15.32)
14	1.110 (28.19)	M19 X 1.0-6g-.100R	0.875-.067P-.2L-TS-2B	0.681 (17.30)
16	1.170 (29.72)	M22 X 1.0-6g-.100R	1.000-.067P-.2L-TS-2B	0.782 (19.86)
18	1.350 (34.29)	M25 X 1.0-6g-.100R	1.125-.067P-.2L-TS-2B	0.899 (22.83)
20	1.470 (37.34)	M28 X 1.0-6g-.100R	1.250-.067P-.2L-TS-2B	1.043 (26.49)
22	1.600 (40.64)	M31 X 1.0-6g-.100R	1.375-.067P-.2L-TS-2B	1.155 (29.34)
24	1.710 (43.43)	M34 X 1.0-6g-.100R	1.500-.067P-.2L-TS-2B	1.273 (32.33)

#### NOTES:

1. Boot groove for use with 809-463 ThermaRex Autoshrink boots
2. Terminate shield with Glenair Band-Master ATS tool 601-108 and Glenair Nanoband
3. High temperature crown ring pin and socket contacts required to meet higher operating temps