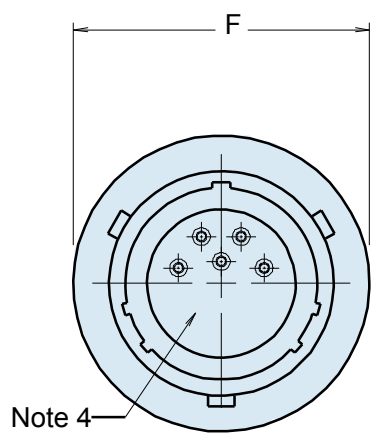
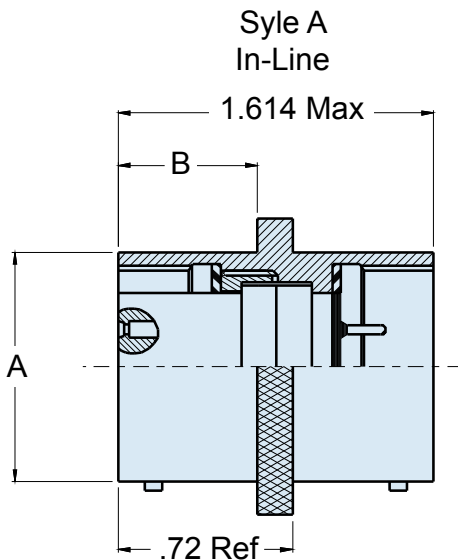
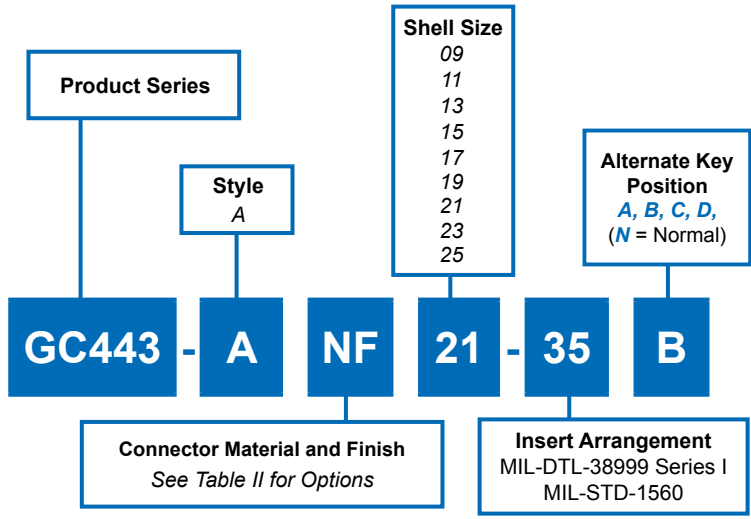




**GC443**  
In-Line/Flange Mount Receptacle • Plug/Plug  
MIL-DTL-38999 Series I Type



APPLICATION NOTES	
1. Assembly identified with manufacturer's name and part number, space permitting	Contacts—copper alloy/gold plate
2. Material/finish: Shell assembly—Al alloy/see Table II Bayonet pins—CRES/passivate	Insulators—high-grade rigid dielectric/N.A. Interfacial & peripheral seals—silicone/ N.A.
	3. Metric Dimensions (mm) are indicated in parentheses
	4. See MIL-DTL-38999 for Insert Arrangements

**GC443**  
**In-Line/Flange Mount Receptacle • Plug/Plug**  
**MIL-DTL-38999 Series I Type**



Sav-Con®  
 Connector Savers

**TABLE II: SHELL FINISHES**

Plating Code	Material	Finish
M	Aluminum	Electroless Nickel
NF	Aluminum	Cadmium Plate Olive Drab over Electroless Nickel
NC	Aluminum	Zinc-Cobalt
ZN	Aluminum	Olive Drab Zinc-Nickel
MT	Aluminum	Ni-PTFE 1000 Hour Grey™ (Nickel Fluorocarbon Polymer)

**TABLE I: CONNECTOR DIMENSIONS**

SHELL SIZE	A DIA MAX	B DIA MAX	C +.010-.005 (+0.3-0.1)	D DIM	E DIM ±.020(0.5)	F DIA MAX
09	.573(14.6)	.632(16.1)	.128(3.3)	.719(18.3)	.938(23.8)	.859(21.8)
11	.701(17.8)	.632(16.1)	.128(3.3)	.812(20.6)	1.031(26.2)	.984(25.0)
13	.851(21.6)	.632(16.1)	.128(3.3)	.906(23.0)	1.125(28.6)	1.156(29.4)
15	.976(24.8)	.632(16.1)	.128(3.3)	.969(24.6)	1.219(31.0)	1.281(32.5)
17	1.101(28.0)	.632(16.1)	.128(3.3)	1.062(27.0)	1.312(33.3)	1.406(35.7)
19	1.208(30.7)	.632(16.1)	.128(3.3)	1.156(29.4)	1.438(36.5)	1.516(38.5)
21	1.333(33.9)	.602(15.3)	.147(3.7)	1.250(31.8)	1.562(39.7)	1.641(41.7)
23	1.458(37.0)	.602(15.3)	.147(3.7)	1.375(34.9)	1.688(42.9)	1.766(44.9)
25	1.583(40.2)	.602(15.3)	.147(3.7)	1.500(38.1)	1.812(46.0)	1.891(48.0)