

SERIES 89 NANOMINIATURE Dual-Row Rectangular Connectors



891-025 and 891-026 Rear Panel Mount Connectors with Insulated Wire and Gasket Seal

DUAL-ROW RECTANGULAR CONNECTORS



Rear Panel Mount Nano Connectors with Insulated Wire feature gold alloy TwistPin contacts. Contacts are precision-crimped to insulated, stranded wire. These nanominiature connectors offer premium performance and reliability for demanding applications. Contact spacing is .025 inches. 1 amp current rating, DWV rating 250 volts AC.

Gasket Seals are available in fluorosilicone, passivated silver plated aluminum filled fluorosilicone or nickel plated aluminum filled fluorosilicone. For replacement gaskets, see 899-015.

HOW TO ORDER

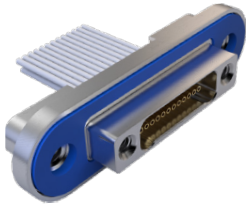
Sample Part Number	891-025	-25P	S	-0	B	7	-12	T	-01	M
Series	891-025 = Plug 891-026 = Receptacle									
Insert Arrangement/ Contact Type	Plugs (891-025): 9P, 15P, 21P, 25P, 31P, 37P, 41P, 51P, 65P, 69P, 85P, 91P Receptacles (891-026): 9S, 15S, 21S, 25S, 31S, 37S, 41S, 51S, 65S, 69S, 85S, 91S									
Shell Material and Finish	T = Titanium Shell, Unplated S = Stainless Steel Shell, Passivated									
Wire Gage	0 = #30 AWG (Wire types A, B, C, E, and F) 2 = #32 AWG (Wire Type B Only)									
Wire Type	A = Ultra Lightweight XLETFE Insulation, Silver Coated Ultra High Strength Copper. B = Extruded PTFE Insulation, Silver Coated Copper NEMA HP3-ETX (MIL-W-16878/6) C = Cross Linked Modified ETFE Insulation, Silver Coated High Strength Copper. SAE AS22759/33 E = Cross Linked Modified ETFE Insulation, Low Fluoride, Lightweight, Silver Coated High Strength Copper Alloy. SAE AS22759/51 F = Cross Linked Modified ETFE Insulation, Low Fluoride, Lightweight, Silver-Coated Copper, SAE AS22759/52									
Wire Color Code	1 = White 2 = Yellow 7 = 10 Color Repeating (Wire Type A is striped, Types B, C, E, and F are solid colors)									
Wire Length	12 = 12.00 + 1.00 inches; as required in one inch increments.									
Hardware Option	T = Female Threads (#0-80 for size 9-69, #2-56 for size 85 & 91)									
Gasket Material	Omit for no gasket 01 = Fluorosilicone IAW MIL-DTL-25988 Type II, Class I, Grade 60 02 = Passivated Silver Plated Aluminum Filled Fluorosilicone IAW MIL-DTL-83528, Type "D" (Cho-seal 1298 or Equivalent) 03 = Nickel Plated, Aluminum Filled Fluorosilicone (Cho-Seal 6503 or Equivalent)									
Mounting Thread	Omit for #2-56 UNC-2B M = M2X0.4 6H									

PLUG HARDWARE



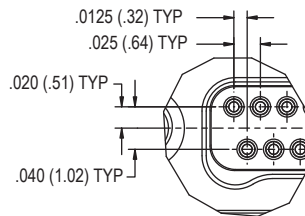
J - Jackscrew

RECEPTACLE HARDWARE



T - Female Thread

DETAIL A



NOTES

1. Inspect and test IAW MIL-DTL-32139
2. Interface dimensions per MIL-DTL-32139, plug (/3) Receptacle (/4)
3. Panel cutout sized to allow lobe up or lobe down mounting orientation
4. Recommended Panel thickness .100 (2.54) max

PERFORMANCE SPECIFICATIONS

Contact Spacing: .025" (0.64) contact centers
Wire Accommodation: #30-#32 AWG
Current Rating: 1 AMP maximum tested per EIA-364-70
DWV: 250 VAC RMS sea level, 100 VAC RMS 70,000 feet per EIA-364 Procedure 20
Insulation Resistance: 5000 Megohms minimum test voltage 100 VDC, per EIA-364 Procedure 21

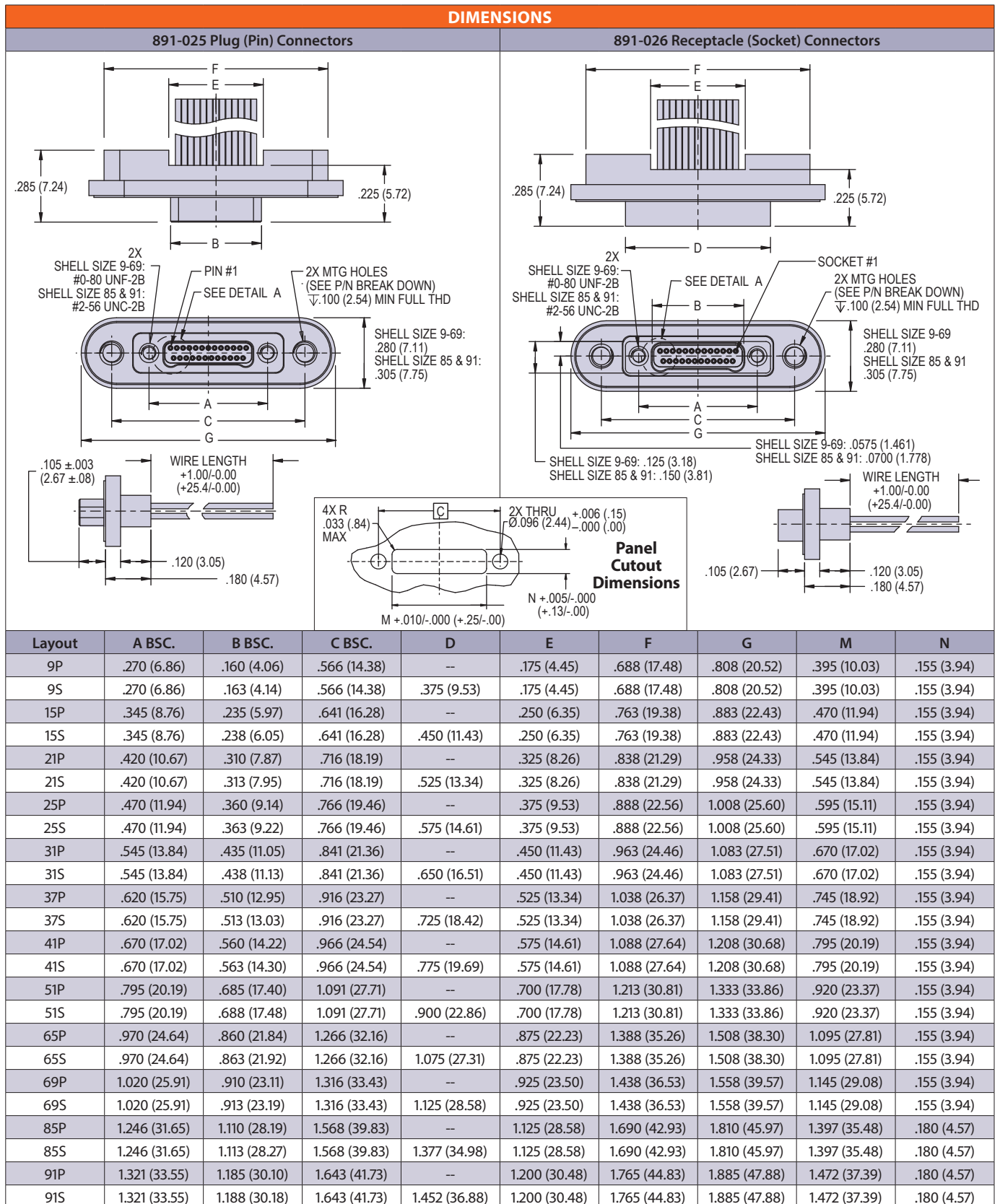
Operating Temperature: -55° C. to +125° C.
Contact Resistance: 71 millivolt drop maximum, 1 AMP current, any catalog supported wire type
Vibration: 20 g's, IAW EIA-364-28, Condition IV
Shock: 100 g's, IAW EIA-364-27, Condition G
Durability: 200 mating cycles per test procedure EIA-364-09

Corrosion Resistance: 48 hours salt spray IAW EIA-364-26, Condition B
Humidity: 240 hours, IAW EIA-364-31, Test Condition B
Contact Engaging/Separation Force: 5 ounce maximum, 0.4 ounce minimum
Thermal Vacuum Outgassing: Total mass loss (TML) 1.0% max., volatile condensable material (VCM) 0.1% max. IAW ASTM E595

SERIES 89 NANOMINIATURE Dual-Row Rectangular Connectors



891-025 and 891-026 Rear Panel Mount Connectors with Insulated Wire and Gasket Seal



DUAL-ROW RECTANGULAR CONNECTORS