

SERIES 89 NANOMINIATURE Dual-Row Rectangular Connectors



Product Selection Guide

DUAL-ROW RECTANGULAR CONNECTORS



891-001 and 891-002
Connectors with
Insulated Wire

C-4



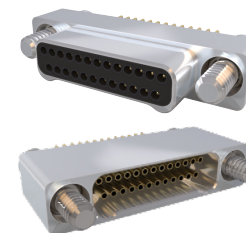
891-050
Front Panel Mount
Receptacle with
Insulated Wire

C-24



891-031
Straight, 45°, or 90°
Angle Connector with
Factory-Installed
Backshell and Insulated
Wire

C-6



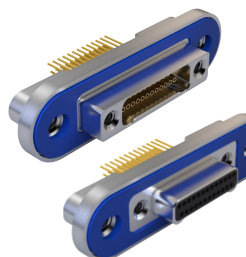
891-003 and 891-004
Connectors with
Uninsulated Wire

C-26



891-005
Back-to-Back
Cable Assembly

C-10



891-060 and 891-061
Rear Panel Mount
Connectors with
Uninsulated Wire and
Gasket Seal

C-28



891-032
Back-to-Back Cable
with Straight, 45°, or 90°
Angle Factory-Installed
Backshell and Insulated
Wire

C-12



891-053
Front Panel Mount
Receptacle with
Uninsulated Wire

C-30



891-025 and 891-026
Rear Panel Mount
Connectors with
Insulated Wire and
Gasket Seal

C-18



891-006 and 891-007
Vertical Mount Thru-
Hole PCB Connectors

C-32



891-054
Rear Panel Mount
Connectors with
backshell, Insulated
Wire and Gasket seal

C-20



891-039 and 891-040
Vertical Mount Thru-
Hole PCB Connectors
with Mounting Ears

C-38

SERIES 89 NANOMINIATURE Dual-Row Rectangular Connectors



Product Selection Guide

DUAL-ROW RECTANGULAR CONNECTORS



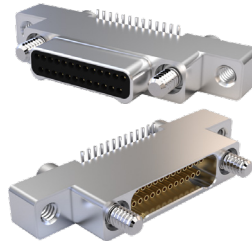
891-029 and 891-030
Rear Panel Mount,
Gasket-Sealed,
Vertical Thru-Hole PCB
Connectors **C-44**



891-010 and 891-011
Vertical Surface Mount
PCB Connectors **C-80**



891-062 and 891-063
Rear Panel Mount,
Gasket-Sealed, Vertical
Thru-Hole PCB Mount
Connectors **C-50**



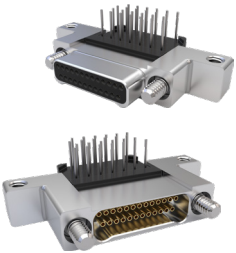
891-017 and 891-018
Vertical Surface Mount
PCB Connectors with
Jackscrews **C-86**



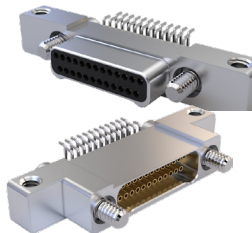
891-008 and 891-009
Right-Angle Mount
Thru-Hole PCB
Connectors **C-56**



891-012 and 891-013
Right-Angle Surface
Mount PCB Connector **C-92**



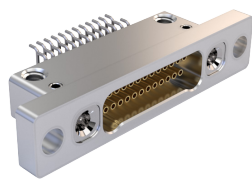
891-043 and 891-044
Right-Angle Mount
Thru-Hole PCB
Connectors with
Mounting Ears **C-62**



891-019 and 891-020
Right-Angle Surface
Mount PCB Connector
with Jackscrews **C-98**



891-027 and 891-028
Rear Panel Mount,
Gasket-Sealed, Right-
Angle Thru-Hole PCB
Connector **C-68**



891-052
Front Panel Mount,
Right-Angle Surface
Mount PCB Receptacle,
Thru-hole or threaded
panel mount **C-104**



**891-064 and
891-065** Rear Panel
Mount, Gasket-Sealed,
Right-Angle Thru-Hole
PCB Mount Connector
with threaded PCB
mounting hole **C-74**



891-014 and 891-015
Straddle Mount
Connector **C-108**

SERIES 89 NANOMINIATURE Dual-Row Rectangular Connectors



Product Selection Guide



891-035 and 891-036
Rear Panel Mount,
Gasket-Sealed, Straddle
Mount Connector C-114



891-051
Front Panel Mount,
Straddle Mount
Receptacle, Thru hole
or threaded panel
mount C-120



891-016
Sav-Con® Connector
Saver C-124



891-037 and 891-038
Plug and Receptacle
Shorting Connector C-125



899-011
EMI Cover C-127



899-015
Rear Panel Mount
Replacement Gasket C-129