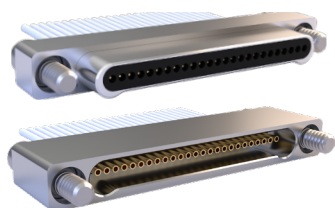


# MIL-DTL-32139 NANOMINIATURE Single and Dual Row Rectangular Connectors



## Connector Selection Guide

M32139 SINGLE AND DUAL ROW RECTANGULAR CONNECTORS



**MIL-DTL-32139/01 and /02 Plug and Receptacle, Single Row Connectors with Insulated Wire**

E-2



**MIL-DTL-32139/03 and /04 Plug and Receptacle, Dual Row Connectors with Insulated Wire**

E-4



**MIL-DTL-32139/05 and /06 Plug and Receptacle, Single Row, Vertical Mount, Thru-Hole PCB Connectors**

E-6



**MIL-DTL-32139/07 and /08 Plug and Receptacle, Single Row, Right-Angle Mount Thru-Hole PCB Connectors**

E-10



**MIL-DTL-32139/09 and /10 Plug and Receptacle, Rear Panel Mount, Dual Row Connectors with Insulated Wire**

E-14