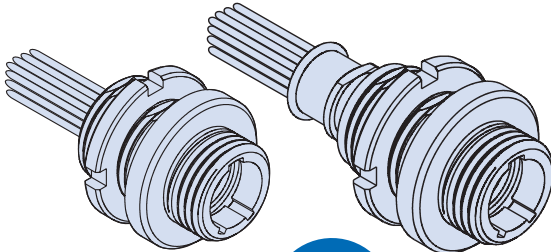


Front Panel Mount, Threaded Receptacle with Insulated Wire - How to Order



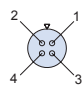
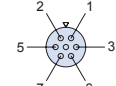
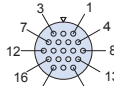
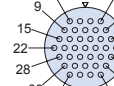
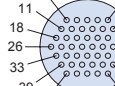
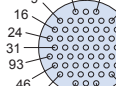
MATES WITH 892-006

Glenair Front Panel Mount Threaded Coupling Receptacle Connectors feature gold alloy TwistPin contacts, offering premium performance and reliability for demanding applications. Available with or without backshell. Backshell option available with shrink boot or overmolding.

Choose Aluminum or Stainless Steel Shells in 6 layouts from 4 to 55 contacts. These connectors are intermateable with nanominiature plug connectors 892-006.

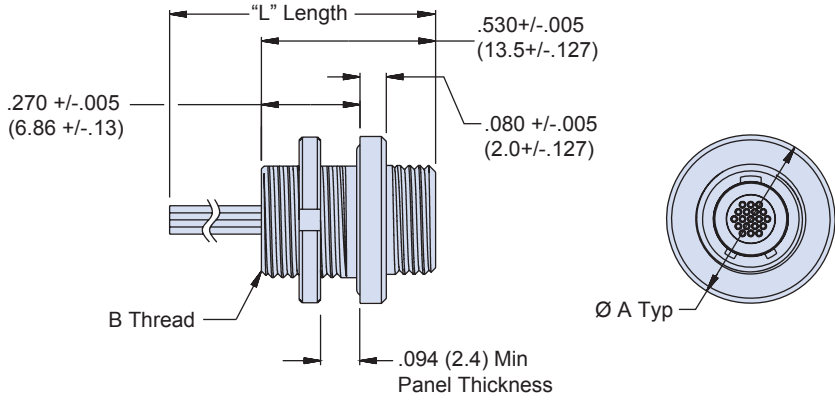
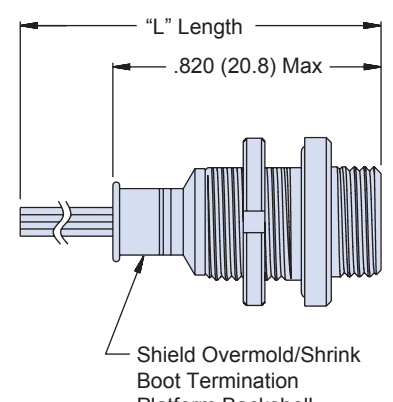
B

How To Order		892	-001	-02	1-7	N	A2	-0	A	7	-12
Sample Part Number											
Series	892 = Nano Circular with Insulated Wire										
Shell Style	001 = Front Panel Mount Threaded Coupling Receptacle										
Accessory	01 = No Backshell 02 = With Backshell 03 = Overmolded 04 = Shrink Boot										
Shell Size/Contact Arrangement	1-4 - Shell Size 1 with 4 contacts 3-37 - Shell Size 3 with 37 contacts 1-7 - Shell Size 1 with 7 contacts 4-44 - Shell Size 4 with 44 contacts 2-19 - Shell Size 2 with 19 contacts 4-55 - Shell Size 4 with 55 contacts See Receptacle Mating Face View and Contact Layout Table										
Polarization	N = Normal A = Alternate										
Shell Material/Finish	A2 = Aluminum/Electroless Nickel S1 = Stainless Steel/Zinc Cobalt (Black) A5 = Aluminum/Gold Over Nickel S2 = Stainless Steel/Passivated										
Wire Gauge	0 = 30 AWG 2 = 32 AWG										
Wire Type	A = Ultra Lightweight XLETFE Insulation, Silver Coated Ultra High Strength Copper. (Not available in #32 AWG) B = Extruded PTFE Insulation, Silver Coated Copper NEMA HP3-ETX (MIL-W-16878/6) C = Cross Linked Modified ETFE Insulation, Silver Coated High Strength Copper. MIL-W-22759/33 (Not available in #32 AWG)										
Wire Color	1 = White 2 = Yellow 7 = 10 Color repeating (Wire type A is striped, types B and C are solid colors)										
Wire Length (Inches)	12 = 12.00 + 1.00 Inches; as required in one inch increments.										

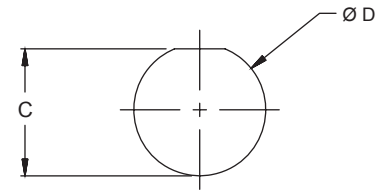
Receptacle Mating Face View and Contact Layout					
Size 1-4 4 Contacts	Size 1-7 7 Contacts	Size 2-19 19 Contacts	Size 3-37 37 Contacts	Size 4-44 44 Contacts	Size 4-55 55 Contacts
					

Front Panel Mount, Threaded Receptacle with Insulated Wire - Dimensions

B

Dimensions		
892-001-01 Without Termination Platform	892-001-02 With Termination Platform	
		
Size	Ø A +/- .005	B Thread
1-4	.489 (12.5)	M8.5 X 0.75-6g
1-7	.489 (12.5)	M8.5 X 0.75-6g
2-19	.528 (13.5)	M9.5 X 0.75-6g
3-37	.567 (14.5)	M10.5 X 0.75-6g
4-44	.627 (16.0)	M12.0 X 0.75-6g
4-55	.627 (16.0)	M12.0 X 0.75-6g

Front Panel Mount Panel Cut-Out		
Size	C +.002 / -.001	ØD +.002 / -.001
1-4	.320 (8.2)	.340 (8.6)
1-7	.320 (8.2)	.340 (8.6)
2-19	.359 (9.2)	.380 (9.7)
3-37	.399 (10.2)	.420 (10.7)
4-44	.457 (11.7)	.479 (12.2)
4-55	.457 (11.7)	.479 (12.2)



NOTES:

- Material/finish
 - Shell/spanner nut/backshell - see part number breakdown
 - Insulator - LCP/na
 - Socket contacts - gold alloy
 - O-rings - fluorosilicone/na
 - Internal latching spring - stainless steel/gold plate

Keyway Positions			
Size	Polarization	A°	B°
1-4	N	150	210
	A	75	210
1-7	N	95	230
	A	140	275
2-19	N	150	210
	A	75	210
3-37	N	150	210
	A	75	210
4-44	N	150	210
	A	75	210
4-55	N	95	230
	A	140	275

