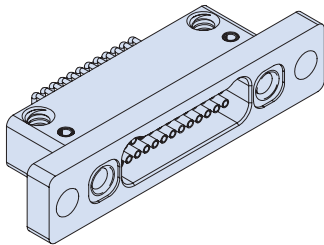


Front Panel Mount, Right Angle Surface Mount PCB Receptacle - How to Order



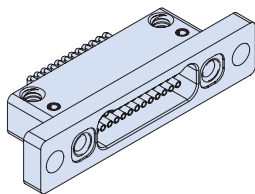
Front Panel Mount PCB Surface Mount Connectors feature gold alloy TwistPin contacts, offering premium performance and reliability for demanding applications. Available with female threads for board level applications.

Choose Aluminum, Titanium or Stainless Steel Shells in eleven layouts from 9 to 85 contacts. MIL-DTL-32139 type connectors are intermateable with any corresponding Glenair Series 891 Dual row metal shell nanominiature connector.

Pre-Tinned PC Tails are coated with Sn63Pb37 or Sn60Pb40 tin-lead for excellent solderability.

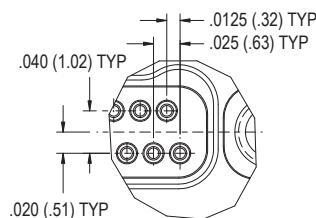
How to Order						
Sample Part Number		891-052	-25S	A2	-BRS	T C
Series	891-052 Receptacle, Front Panel Mount Right Angle PCB Surface Mount					
Insert Arrangement/Contact Type	Sockets (891-052 Receptacle): 9S, 15S, 21S, 25S, 31S, 37S, 41S, 51S, 65S, 69S, 85S					
Shell Material and Finish	A1 - Aluminum Shell, Cadmium Plating T - Titanium Shell, Unplated		A2 - Aluminum Shell, Electroless Nickel Plating S - Stainless Steel Shell, Passivated			
Termination Type	BRS - Board Right Angle Surface Mount					
Hardware	T - Female Thread (#0-80 for size 9-69, #2-56 for size 85)					
Mounting Hole Option	C - Clearance Hole T - Female Thread					

Receptacle (Socket)



T - Female Thread

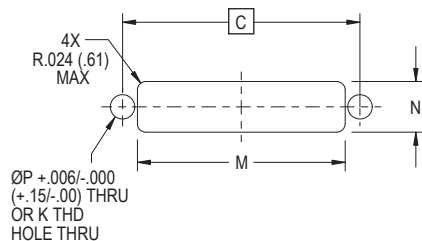
DETAIL A



Panel Mount Connector Mounting Matrix

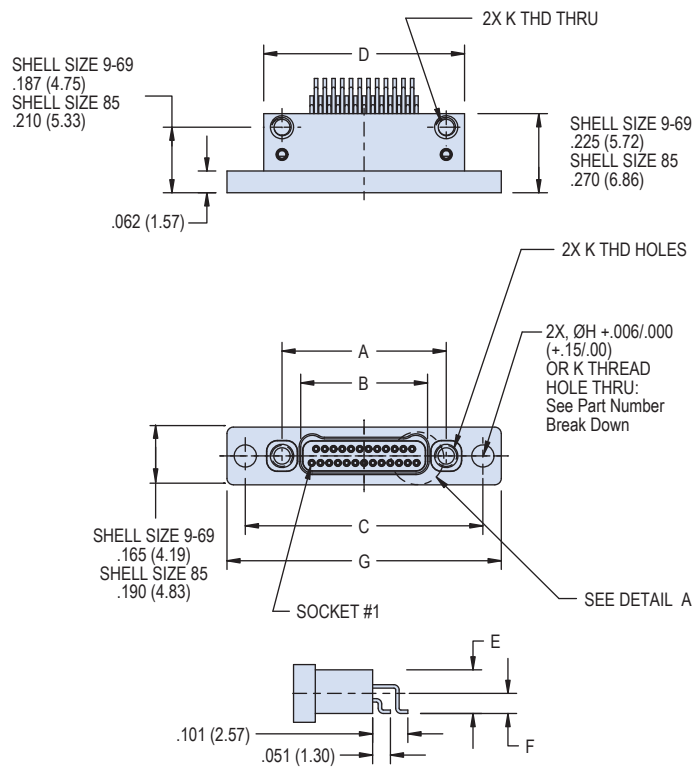
Connector Holes	Panel Holes	Mounting Location
Tapped	Clearance	Rear Panel Mount
Clearance	Tapped	Front Panel Mount
Clearance	Clearance	Front or Rear Panel Mount with screw and nut

PANEL CUT-OUT DIMENSIONS



Shell Size	C	K	M	N	P
9	.480 (12.19)	#0-80 UNF-2B	.395 (10.03)	.145 (3.68)	.070 (1.78)
15	.555 (14.10)	#0-80 UNF-2B	.470 (11.94)		
21	.630 (16.00)	#0-80 UNF-2B	.545 (13.84)		
25	.680 (17.27)	#0-80 UNF-2B	.595 (15.11)		
31	.755 (19.17)	#0-80 UNF-2B	.670 (17.02)		
37	.830 (21.08)	#0-80 UNF-2B	.745 (18.92)		
41	.880 (22.35)	#0-80 UNF-2B	.795 (20.19)		
51	1.005 (25.53)	#0-80 UNF-2B	.920 (23.37)		
65	1.180 (29.97)	#0-80 UNF-2B	1.095 (27.81)		
69	1.230 (31.24)	#0-80 UNF-2B	1.145 (29.08)		
85	1.527 (38.79)	#2-56 UNC-2B	1.397 (35.48)	.170 (4.31)	.096 (2.44)

Dimensions
891-052 Receptacle (Socket) Connectors

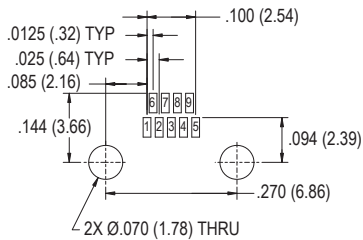
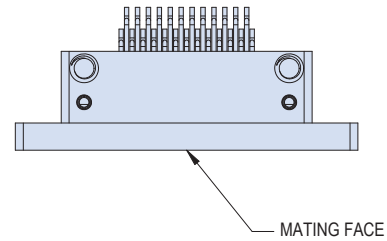
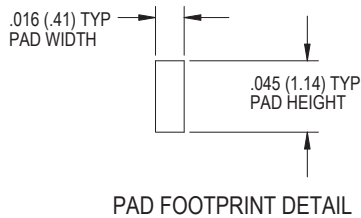


Layout	A BSC.		B BSC.		C BSC.		D		E		F BSC		G		H		K
	In	mm	In	mm	In	mm	In	mm	In	mm	In	mm	In	mm	In	mm	
9S	.270	6.86	.163	4.14	.480	12.19	.375	9.53	.125	3.18	.0575	1.46	.585	14.86	.0635	1.61	#0-80 UNF-2B
15S	.345	8.76	.238	6.05	.555	14.10	.450	11.43	.125	3.18	.0575	1.46	.660	16.76	.0635	1.61	#0-80 UNF-2B
21S	.420	10.67	.313	7.95	.630	16.00	.525	13.34	.125	3.18	.0575	1.46	.735	18.67	.0635	1.61	#0-80 UNF-2B
25S	.470	11.94	.363	9.22	.680	17.27	.575	14.61	.125	3.18	.0575	1.46	.785	19.94	.0635	1.61	#0-80 UNF-2B
31S	.545	13.84	.438	11.13	.755	19.18	.650	16.51	.125	3.18	.0575	1.46	.860	21.84	.0635	1.61	#0-80 UNF-2B
37S	.620	15.75	.513	13.03	.830	21.08	.725	18.42	.125	3.18	.0575	1.46	.935	23.75	.0635	1.61	#0-80 UNF-2B
41S	.670	17.02	.563	14.30	.880	22.35	.775	19.69	.125	3.18	.0575	1.46	.985	25.02	.0635	1.61	#0-80 UNF-2B
51S	.795	20.19	.688	17.48	1.005	25.53	.900	22.86	.125	3.18	.0575	1.46	1.110	28.19	.0635	1.61	#0-80 UNF-2B
65S	.970	24.64	.863	21.92	1.180	29.97	1.075	27.31	.125	3.18	.0575	1.46	1.285	32.64	.0635	1.61	#0-80 UNF-2B
69S	1.020	25.91	.913	23.19	1.230	31.24	1.125	28.58	.125	3.18	.0575	1.46	1.335	33.91	.0635	1.61	#0-80 UNF-2B
85S	1.246	31.65	1.113	28.27	1.527	38.79	1.377	34.98	.150	3.81	.0700	1.78	1.677	42.60	.0890	2.26	#2-56 UNC-2B

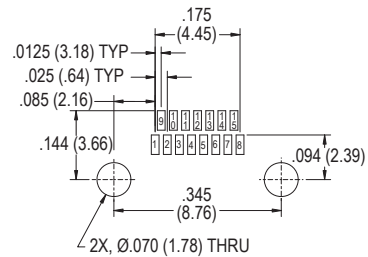
NOTES

1. Inspect and Test IAW MIL-DTL-32139
2. Interface dimensions per MIL-DTL-32139/4
3. Panel cutout will allow for lobe up or down connector mounting.
4. Front or rear panel mounting dependent on selected mounting hole option
5. Recommended panel thickness: .100 (2.54) max

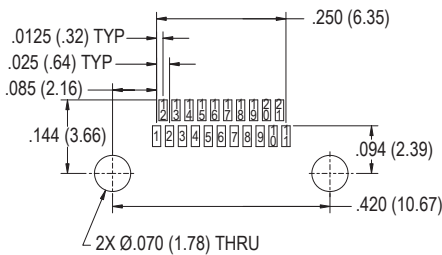




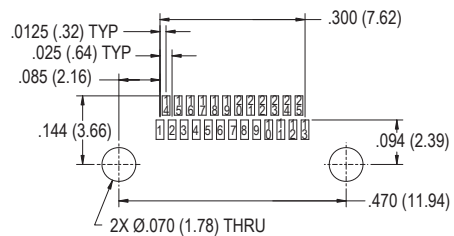
9 Contacts



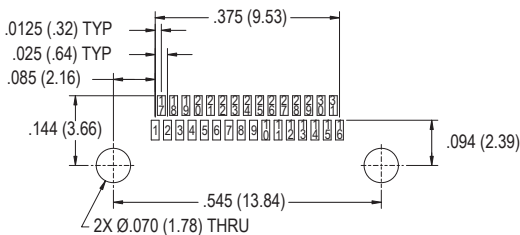
15 Contacts



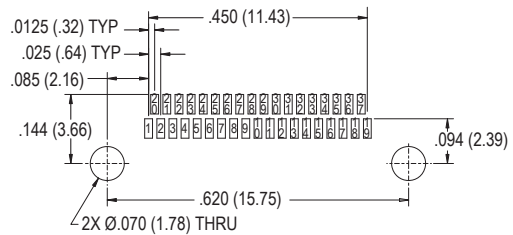
21 Contacts



25 Contacts

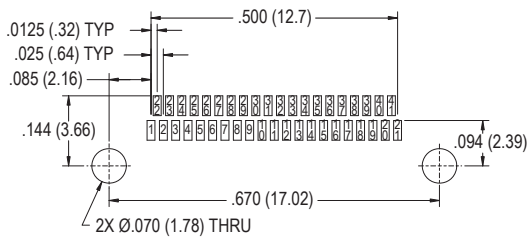
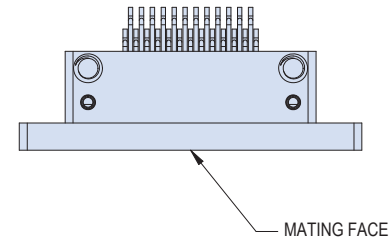
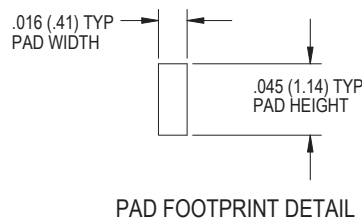


31 Contacts

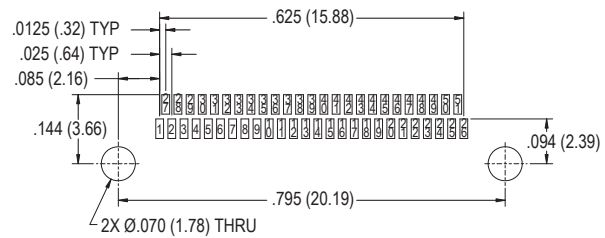


37 Contacts

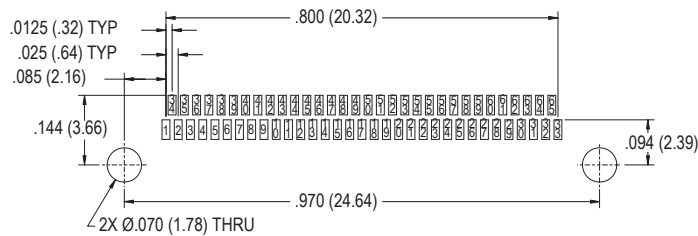
D



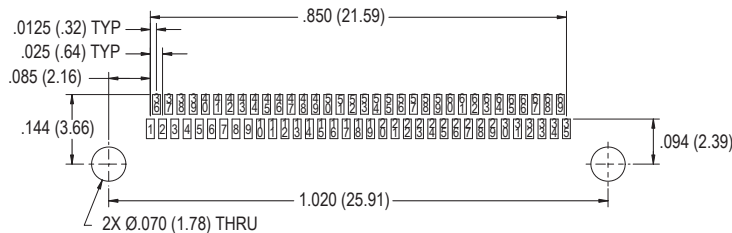
41 Contacts



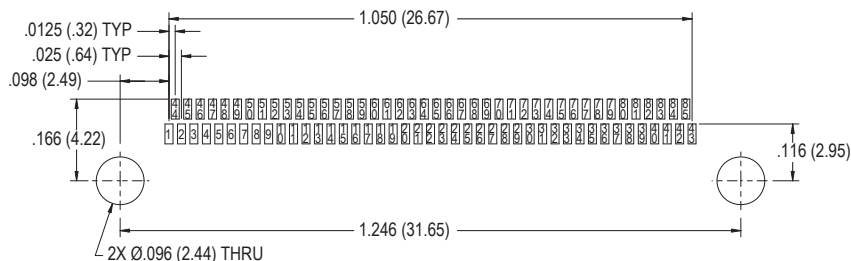
51 Contacts



65 Contacts



69 Contacts



85 Contacts

