

SERIES 89 NANOMINIATURE Single and Dual Row Nano Strip Connectors



890-042 Single Row, Plastic Shell, Nano Strip, Right-Angle Surface Mount PCB Connector

SINGLE AND DUAL ROW NANO STRIP CONNECTORS



Nano Strip Connectors with Insulated Wire feature gold alloy TwistPin contacts. These nanominiature strip connectors offer premium performance and reliability for demanding applications. Pre-Tinned PC Tail are coated with Sn63Pb37 or Sn60Pb40 Tin-Lead for excellent solderability

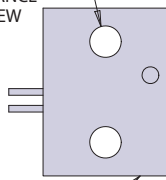
TwistPin Contact System assures premium performance in demanding environments. The gold alloy contacts will stand up to years of exposure without corrosion.

Typical Applications include UAVs, satellites, missile systems and geophysical instruments.

HOW TO ORDER

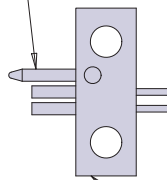
Sample Part Number	890-042	-9	P	-BRS	-P1	MH
Series	890-042 = Single Row, Plastic Shell, Nano Strip Right-Angle Surface Mount PCB					
Number of Cavities	1 thru 40 = Total number of cavities including cavities used for guide pins and disabled cavities used for mounting holes, if any. See Table I					
Contact Type	P = Pin (Plug)		S = Socket (Receptacle)			
Termination Type	BRS = Board Right-Angle Surface Mount					
Optional Guide Pin	Omit for no guide pin (Guide pin in receptacle, accepts guide pin in plug) P1 = Guide pin or accepts guide pin in position 1 (add 1 cavity to number of active contacts) PB = Guide pin or accepts guide pin in 1 and last position (add 2 cavities to number of active contacts) PX = Guide pin or accepts guide pin in position specified by "X" (add 1 cavity to number of active contacts)					
Optional Mounting Holes	Omit for no mounting holes		MH = Mounting holes (add 6 cavities to number of active contacts)			

OPTIONAL MOUNTING HOLES CLEARANCE FOR 1MM SCREW

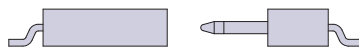


890-042-9P-BRS-P1MH

OPTIONAL GUIDE PIN



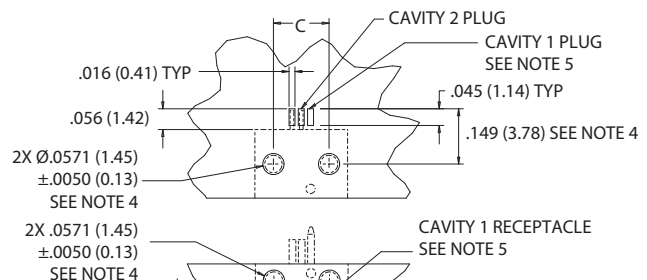
890-042-9S-BRS-P1MH



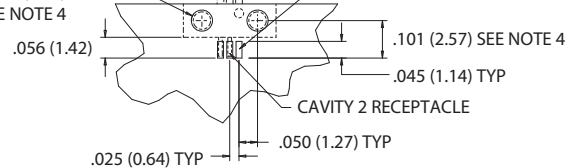
NUMBER OF CAVITIES EXAMPLE
2 ACTIVE CONTACTS
+ 1 P1 GUIDE PIN
+ 6 MOUNTING HOLES
9 TOTAL

NANO STRIP PCB LAYOUT

NANO STRIP PLUG PCB LAYOUT, COMPONENT SIDE



NANO STRIP RECEPTACLE, COMPONENT SIDE, PCB LAYOUT



PERFORMANCE SPECIFICATIONS

Contact Spacing: .025" (0.64) contact centers
Current Rating: 1 AMP maximum tested per EIA-364-70
DWV: 250 VAC RMS sea level, 100 VAC RMS 70,000 feet per EIA-364 Procedure 20
Insulation Resistance: 5000 Megohms minimum test voltage 100 VDC, per EIA-364 Procedure 21
Operating Temperature: -55° C. to +125° C.

Contact Resistance: 71 millivolt drop maximum, 1 AMP current, any catalog supported wire type
Corrosion Resistance: 48 hour salt spray IAW EIA-364-26, Condition B
Humidity: 240 hours, IAW EIA-364-31, Test Condition B
Contact Engaging/Separation Force: 5 ounce maximum, 0.4 ounce minimum
Thermal Vacuum Outgassing: Total mass loss (TML) 1.0% max., volatile condensable material (VCM) 0.1% max. IAW ASTM E595

SERIES 89 NANOMINIATURE Single and Dual Row Nano Strip Connectors



890-042 Single Row, Plastic Shell, Nano Strip, Right-Angle Surface Mount PCB Connector

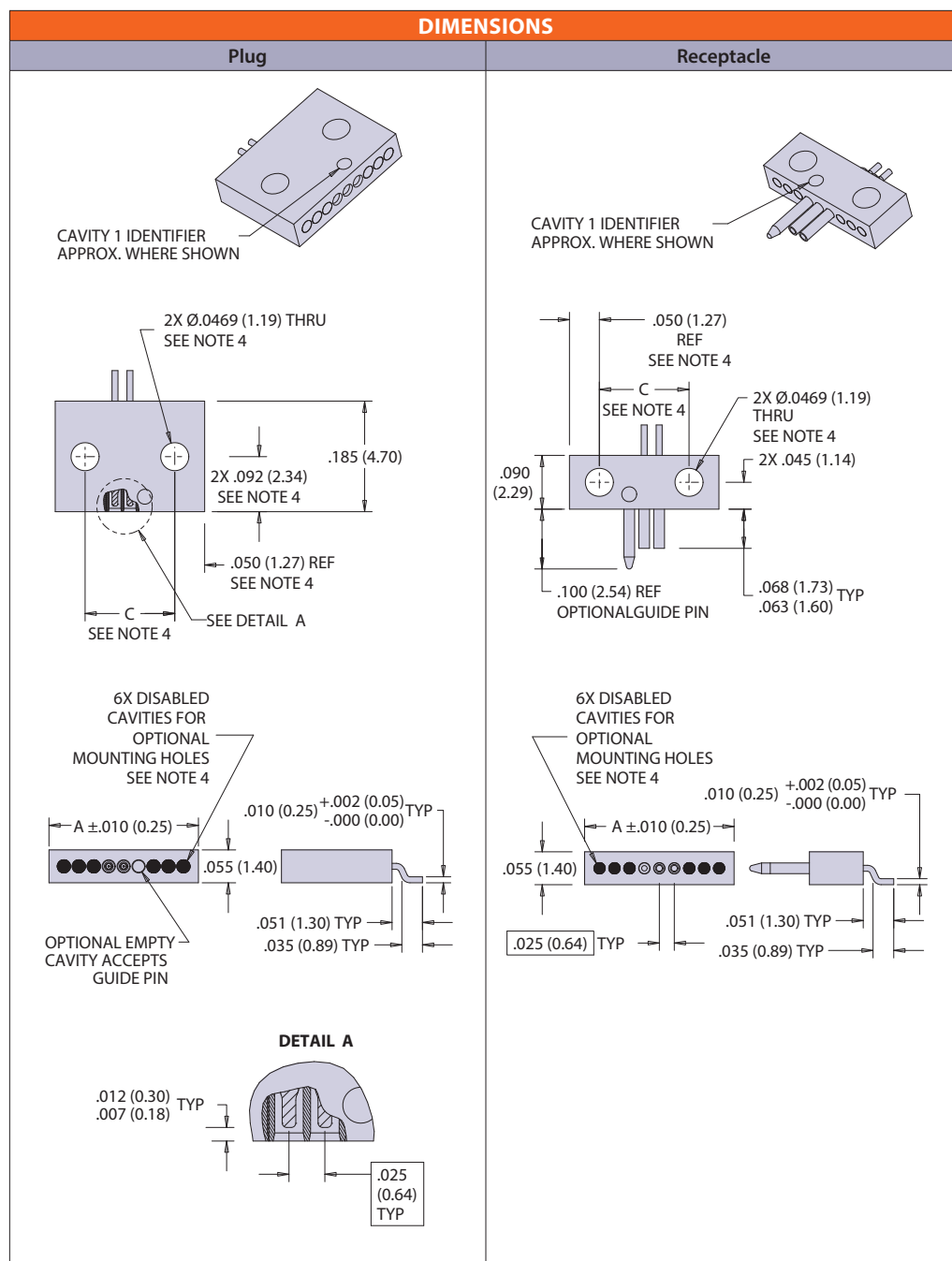


TABLE I : DIMENSIONS

Number Cavities	A	C See Note 4
1	0.050 (1.27)	N/A
2	0.075 (1.91)	N/A
3	0.100 (2.54)	N/A
4	0.125 (3.18)	N/A
5	0.150 (3.81)	N/A
6	0.175 (4.45)	N/A
7	0.200 (5.08)	0.100 (2.54)
8	0.225 (5.72)	0.125 (3.18)
9	0.250 (6.35)	0.150 (3.81)
10	0.275 (6.99)	0.175 (4.45)
11	0.300 (7.62)	0.200 (5.08)
12	0.325 (8.26)	0.225 (5.72)
13	0.350 (8.89)	0.250 (6.35)
14	0.375 (9.53)	0.275 (6.99)
15	0.400 (10.16)	0.300 (7.62)
16	0.425 (10.80)	0.325 (8.26)
17	0.450 (11.43)	0.350 (8.89)
18	0.475 (12.07)	0.375 (9.53)
19	0.500 (12.70)	0.400 (10.16)
20	0.525 (13.34)	0.425 (10.80)
21	0.550 (13.97)	0.450 (11.43)
22	0.575 (14.61)	0.475 (12.07)
23	0.600 (15.24)	0.500 (12.70)
24	0.625 (15.88)	0.525 (13.34)
25	0.650 (16.51)	0.550 (13.97)
26	0.675 (17.15)	0.575 (14.61)
27	0.700 (17.78)	0.600 (15.24)
28	0.725 (18.42)	0.625 (15.88)
29	0.750 (19.05)	0.650 (16.51)
30	0.775 (19.69)	0.675 (17.15)
31	0.800 (20.32)	0.700 (17.78)
32	0.825 (20.96)	0.725 (18.42)
33	0.850 (21.59)	0.750 (19.05)
34	0.875 (22.23)	0.775 (19.69)
35	0.900 (22.86)	0.800 (20.32)
36	0.925 (23.50)	0.825 (20.96)
37	0.950 (24.13)	0.850 (21.59)
38	0.975 (24.77)	0.875 (22.23)
39	1.000 (25.40)	0.900 (22.86)
40	1.025 (26.04)	0.925 (23.50)

SINGLE AND DUAL ROW NANO STRIP CONNECTORS

NOTES

1. Material and Finishes:
 - Shell: polyphenylene sulfide (PPS)
 - Contacts: gold alloy / unplated
 - Pre-tinned PC tails: Coated with Sn63Pb37 or Sn60Pb40 tin-lead solder
 - Optional guide pin: stainless steel, passivated
2. Inspect and test IAW MIL-DTL-32139 where applicable
3. Strip shell may have a half cavity on either end or each end
4. Only applies if ordered with optional mounting holes
5. Pads corresponding to guide pin(s) or cavities that accept guide pin(s) can be omitted