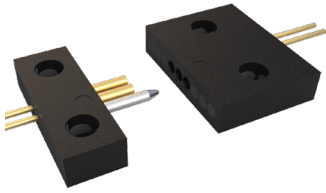


# SERIES 89 NANOMINIATURE Single and Dual Row Nano Strip Connectors



## 890-047 Single Row, Plastic Shell, Nano Strip Connector with Uninsulated Wire

SINGLE AND DUAL ROW NANO STRIP CONNECTORS

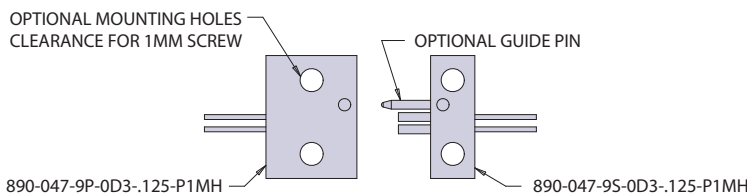


**Nano Strip Connectors with Uninsulated Wire** feature gold alloy TwistPin contacts. Contacts are precision-crimped to uninsulated wire. These nanominiature strip connectors offer premium performance and reliability for demanding applications. Wire gages #30 and #32 AWG.

**TwistPin Contact System** assures premium performance in demanding environments. The gold alloy contacts will stand up to years of exposure without corrosion.

**Typical Applications** include UAVs, prototyping, satellites, missile systems and geophysical instruments.

HOW TO ORDER	
<b>Sample Part Number</b>	890-047 -9 P -0 D3 -.125 -P1 MH
<b>Series</b>	890-047 = Single row plastic shell Nano Strip with un-insulated wire
<b>Number of Cavities</b>	1 thru 40 = Total number of cavities including cavities used for guide pins and disabled cavities used for mounting holes, if any. See Table I
<b>Contact Type</b>	P = Pin (plug)      S = Socket (receptacle)
<b>Wire Gage</b>	0 = #30 AWG      2 = #32 AWG
<b>Wire Type</b>	D3 = Single strand copper wire, uninsulated with gold plating
<b>Wire Length</b>	.125 .250 .375 .500; wire length in inches
<b>Optional Guide Pin</b>	Omit for no guide pin (Guide pin in receptacle, accepts guide pin in plug) P1 = Guide pin or accepts guide pin in position 1 (add 1 cavity to number of active contacts) PB = Guide pin or accepts guide pin in 1 and last position (add 2 cavities to number of active contacts) PX = Guide pin or accepts guide pin in position specified by "X" (add 1 cavity to number of active contacts)
<b>Optional Mounting Holes</b>	Omit for no mounting holes      MH = Mounting holes (add 6 cavities to number of active contacts)



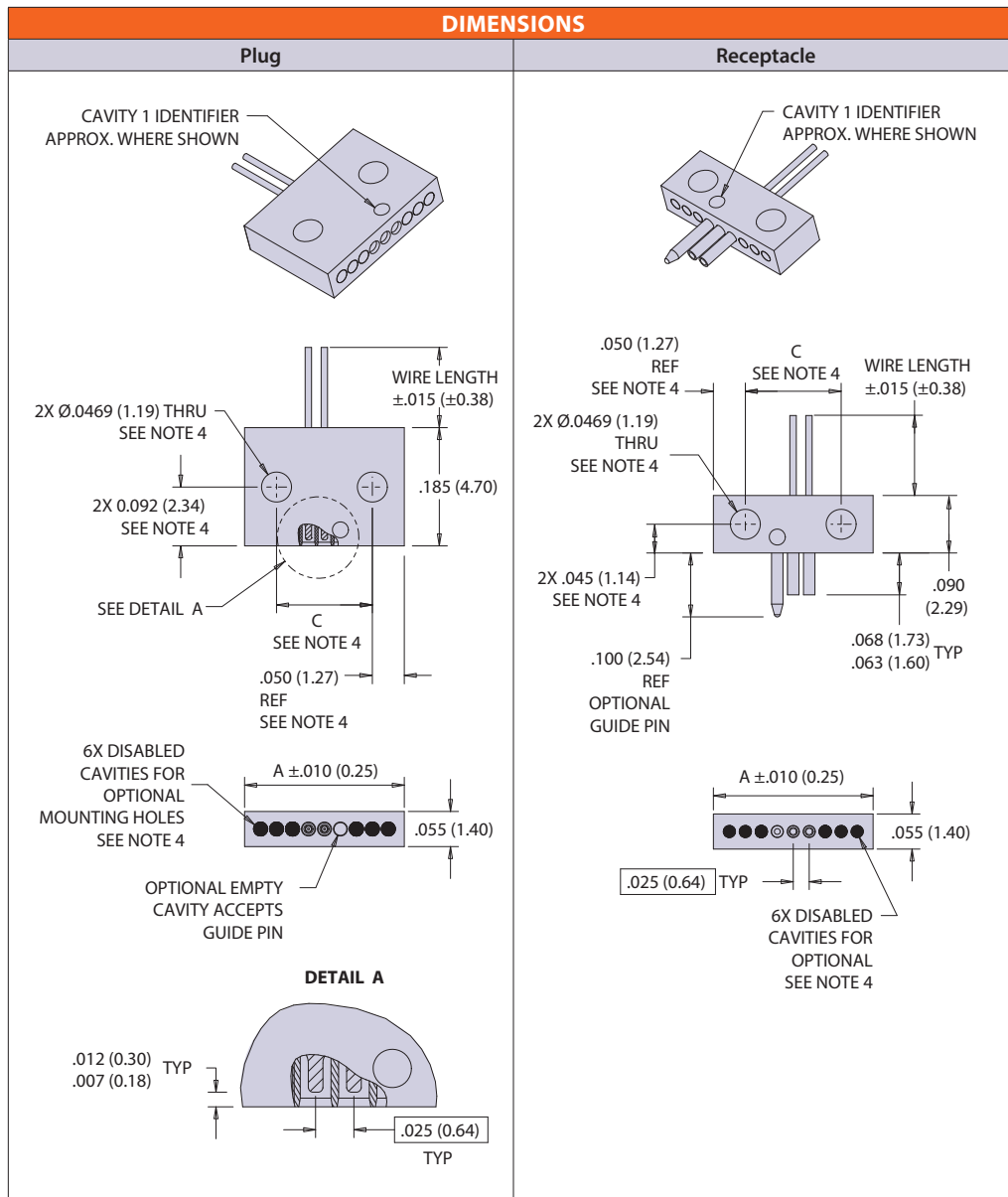
NUMBER OF CAVITIES EXAMPLE
2 ACTIVE CONTACTS
+1 P1 GUIDE PIN
+6 MOUNTING HOLES
9 TOTAL

PERFORMANCE SPECIFICATIONS	
<b>Contact Spacing:</b> .025" (0.64) contact centers	<b>Contact Resistance:</b> 71 millivolt drop maximum, 1 AMP current, any catalog supported wire type
<b>Wire Accommodation:</b> #30-#32 AWG	<b>Corrosion Resistance:</b> 48 hour salt spray IAW EIA-364-26, Condition B
<b>Current Rating:</b> 1 AMP maximum tested per EIA-364-70	<b>Humidity:</b> 240 hours, IAW EIA-364-31, Test Condition B
<b>DWV:</b> 250 VAC RMS sea level, 100 VAC RMS 70,000 feet per EIA-364 Procedure 20	<b>Contact Engaging/Separation Force:</b> 5 ounce maximum, 0.4 ounce minimum
<b>Insulation Resistance:</b> 5000 Megohms minimum test voltage 100 VDC, per EIA-364 Procedure 21	<b>Thermal Vacuum Outgassing:</b> Total mass loss (TML) 1.0% max., volatile condensable material (VCM) 0.1% max. IAW ASTM E595
<b>Operating Temperature:</b> -55° C. to +125° C.	

# SERIES 89 NANOMINIATURE Single and Dual Row Nano Strip Connectors



## 890-047 Single Row, Plastic Shell, Nano Strip Connector with Uninsulated Wire



**TABLE I : DIMENSIONS**

Number Cavities	A	C See Note 4
1	0.050 (1.27)	N/A
2	0.075 (1.91)	N/A
3	0.100 (2.54)	N/A
4	0.125 (3.18)	N/A
5	0.150 (3.81)	N/A
6	0.175 (4.45)	N/A
7	0.200 (5.08)	0.100 (2.54)
8	0.225 (5.72)	0.125 (3.18)
9	0.250 (6.35)	0.150 (3.81)
10	0.275 (6.99)	0.175 (4.45)
11	0.300 (7.62)	0.200 (5.08)
12	0.325 (8.26)	0.225 (5.72)
13	0.350 (8.89)	0.250 (6.35)
14	0.375 (9.53)	0.275 (6.99)
15	0.400 (10.16)	0.300 (7.62)
16	0.425 (10.80)	0.325 (8.26)
17	0.450 (11.43)	0.350 (8.89)
18	0.475 (12.07)	0.375 (9.53)
19	0.500 (12.70)	0.400 (10.16)
20	0.525 (13.34)	0.425 (10.80)
21	0.550 (13.97)	0.450 (11.43)
22	0.575 (14.61)	0.475 (12.07)
23	0.600 (15.24)	0.500 (12.70)
24	0.625 (15.88)	0.525 (13.34)
25	0.650 (16.51)	0.550 (13.97)
26	0.675 (17.15)	0.575 (14.61)
27	0.700 (17.78)	0.600 (15.24)
28	0.725 (18.42)	0.625 (15.88)
29	0.750 (19.05)	0.650 (16.51)
30	0.775 (19.69)	0.675 (17.15)
31	0.800 (20.32)	0.700 (17.78)
32	0.825 (20.96)	0.725 (18.42)
33	0.850 (21.59)	0.750 (19.05)
34	0.875 (22.23)	0.775 (19.69)
35	0.900 (22.86)	0.800 (20.32)
36	0.925 (23.50)	0.825 (20.96)
37	0.950 (24.13)	0.850 (21.59)
38	0.975 (24.77)	0.875 (22.23)
39	1.000 (25.40)	0.900 (22.86)
40	1.025 (26.04)	0.925 (23.50)

SINGLE AND DUAL ROW NANO STRIP CONNECTORS

### NOTES

- Material and Finishes:
  - Shell: polyphenylene sulfide (PPS)
  - Contacts: gold alloy / unplated
  - Wire: see part number break down
  - Optional guide pin: stainless steel, passivated
- Inspect and test IAW MIL-DTL-32139 where applicable
- Strip shell may have a half cavity on either end or each end
- Only applies if ordered with optional mounting holes