

# SERIES 89 NANOMINIATURE Single and Dual Row Nano Strip Connectors



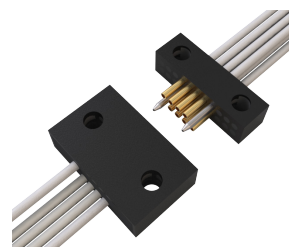
## Product Selection Guide

SINGLE AND DUAL ROW NANO STRIP CONNECTORS



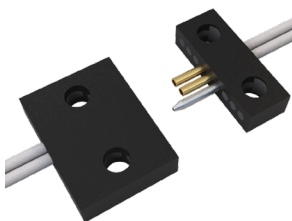
**890-042**  
Single Row, Plastic Shell Nano Strip, Right-Angle Surface Mount PCB Connector

D-2



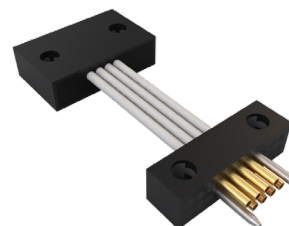
**891-045**  
Dual Row, Plastic Shell Nano Strip Connector with Insulated Wire

D-14



**890-045**  
Single Row, Plastic Shell Nano Strip Connector with Insulated Wire

D-4



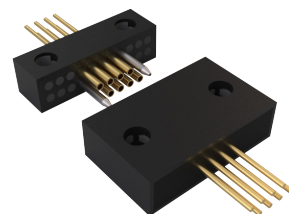
**891-046**  
Dual Row, Plastic Shell Nano Strip, Back-to-Back Cable Assembly

D-16



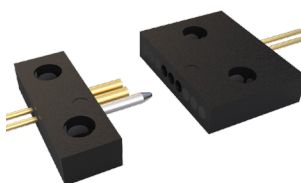
**890-046**  
Single Row, Plastic Shell Nano Strip, Back-to-Back Cable Assembly

D-6



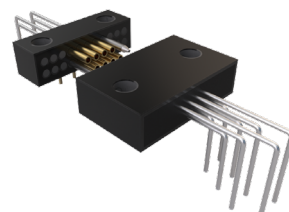
**891-047**  
Dual Row, Plastic Shell Nano Strip Connector with Uninsulated Wire

D-18



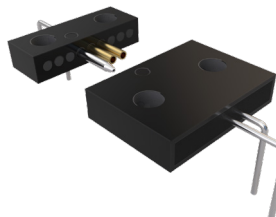
**890-047**  
Single Row, Plastic Shell Nano Strip, Connector with Uninsulated Wire

D-8



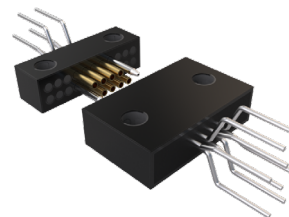
**891-048**  
Dual Row, Plastic Shell Nano Strip, Right-Angle Mount Thru-Hole PCB Connector

D-20



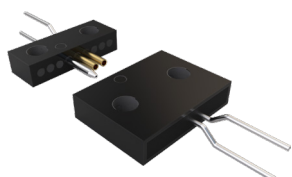
**890-048**  
Single Row, Plastic Shell Nano Strip, Right-Angle Mount Thru-Hole PCB Connector

D-10



**891-049**  
Dual Row, Plastic Shell Nano Strip, Vertical Mount Thru-Hole PCB Connector

D-22



**890-049**  
Single Row, Plastic Shell Nano Strip, Vertical Mount Thru-Hole PCB Connector

D-12