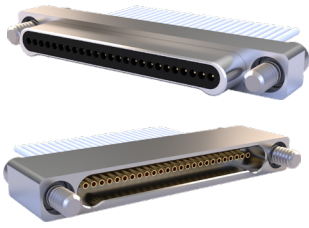


SERIES 89 NANOMINIATURE Single-Row Rectangular Connectors



890-001 and 890-002 Plug and Receptacle Connectors with Insulated Wire

SINGLE-ROW RECTANGULAR CONNECTORS

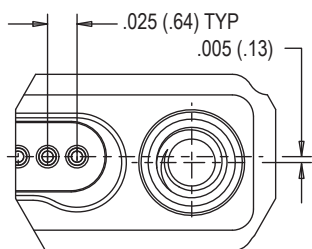


Glenair Insulated Wire Nano Connectors feature gold alloy TwistPin contacts. Contacts are precision-crimped to insulated, stranded wire. Nanominiature connectors offer premium performance and reliability for demanding applications, available in 8 arrangements. Contact spacing is .025 inches. 1 amp current rating, DWV rating 250 volts AC. Wire gages #30 and #32 AWG. TwistPin Contact System assures premium performance in demanding environments. The gold alloy contacts will stand up to years of exposure without corrosion. Typical Applications include UAV's, satellites, missile systems and geophysical instruments.

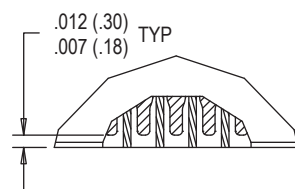
HOW TO ORDER	
Sample Part Number	890-002 -25S A2 -0 B 7 -12 T
Series	890-001 = Plug, Pin Contacts, Single Row Nanominiature 890-002 = Receptacle, Socket Contacts, Single Row Nanominiature
Insert Arrangement/ Contact Type	Plugs (890-001): 5P, 9P, 15P, 21P, 25P, 31P, 37P, 51P Receptacles (890-002): 5S, 9S, 15S, 21S, 25S, 31S, 37S, 51S
Shell Material and Finish	A1 = Alum Shell, Cadmium Plating A2 = Alum Shell, Electroless Nickel Plating A31 = Alum Shell, Zinc Nickel Plating, Blk A33 = Alum Shell, Nickel PTFE Plating S = Stainless Steel Shell, Passivated T = Titanium Shell, Unplated
Wire Gage	0 = #30 AWG (Wire Types A, B, C, E, and F) 2 = #32 AWG (Wire Type B Only)
Wire Type	A = Ultra Lightweight XLETFE Insulation, Silver Coated Ultra High Strength Copper. B = Extruded PTFE Insulation, Silver Coated Copper NEMA HP3-ETX (MIL-W-16878/6) C = Cross Linked Modified ETFE Insulation, Silver Coated High Strength Copper. SAE AS22759/33-30 E = Cross Linked Modified ETFE Insulation, Low Fluoride, Lightweight, Silver Coated High Strength Copper Alloy. SAE AS22759/51-30 F = Cross Linked Modified ETFE Insulation, Low Fluoride, Lightweight, Silver-Coated Copper, SAE AS22759/52-30
Wire Color Code	1 = White 2 = Yellow 7 = 10 Color Repeating (wire Type A is striped, Types B, C, E, and F are solid colors)
Wire Length	12 = 12.00 + 1.00 Inches; as required in one inch increments.
Hardware	J = Hex Head Jackscrew, #0-80 UNF-2A T = Female Thread, #0-80 UNF-2B* *Stainless Steel Inserts installed in Aluminum Shells, tapped directly into Stainless Steel and Titanium Shells

PLUG HARDWARE		RECEPTACLE HARDWARE	
J - Jackscrew Option	T - Female Thread Option	J - Jackscrew Option	T - Female Thread Option

DETAIL A



DETAIL B

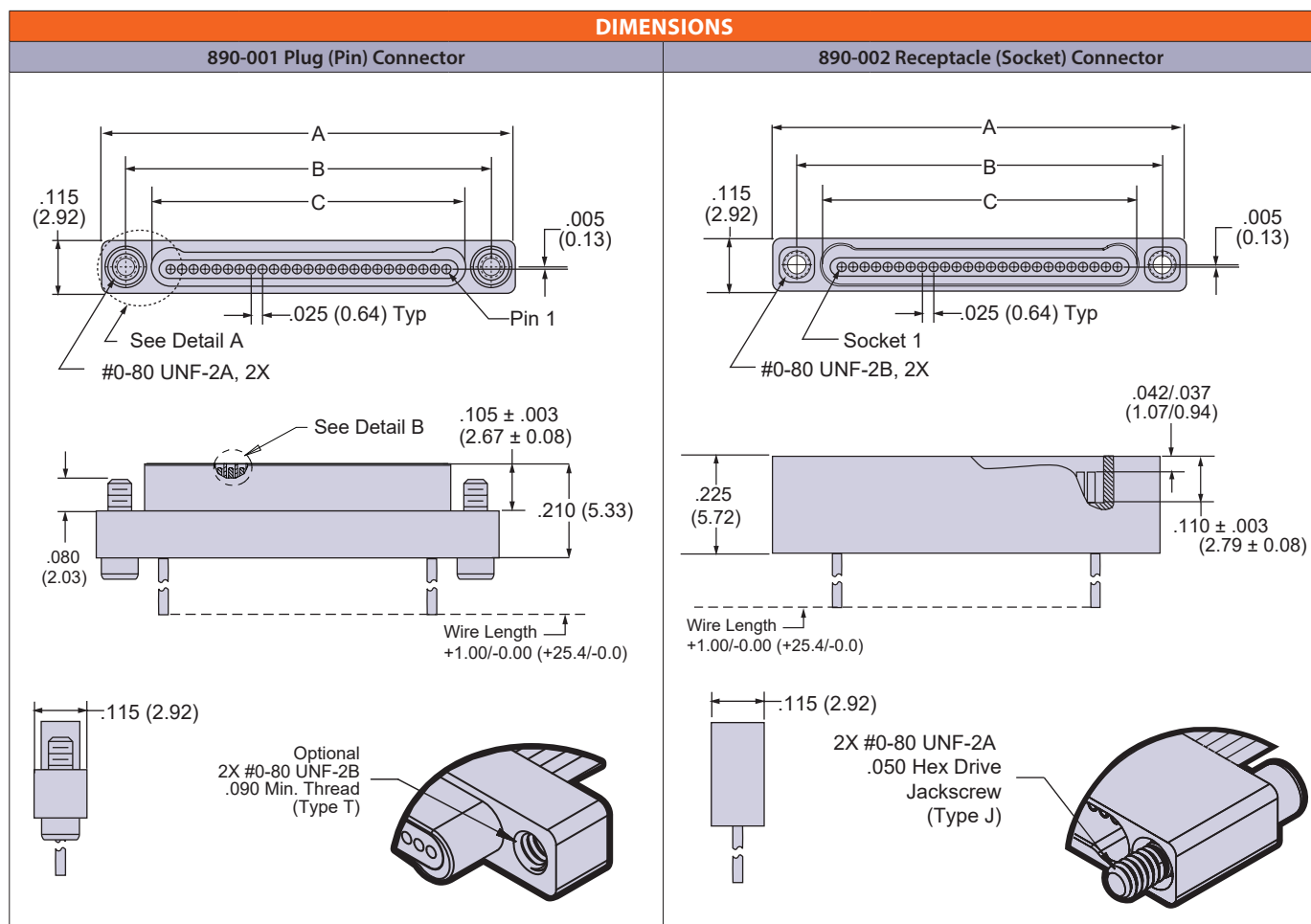


PERFORMANCE SPECIFICATIONS	
Contact Spacing: .025" (0.64) contact centers	Vibration: 20 g's, IAW EIA-364-28, Condition IV
Wire Accommodation: #30-#32 AWG	Shock: 100 g's, IAW EIA-364-27, Condition G
Current Rating: 1 AMP maximum tested per EIA-364-70	Durability: 200 mating cycles per test procedure EIA-364-09
DWV: 250 VAC RMS sea level, 100 VAC RMS 70,000 feet per EIA-364 Procedure 20	Corrosion Resistance: 48 hours salt spray IAW EIA-364-26, Condition B
Insulation Resistance: 5000 Megohms minimum test voltage 100 VDC, per EIA-364 Procedure 21	Humidity: 240 hours, IAW EIA-364-31, Test Condition B
Operating Temperature: -55° C. to +125° C.	Contact Engaging/Separation Force: 5 ounce maximum, 0.4 ounce minimum
Contact Resistance: 71 millivolt drop maximum, 1 AMP current, any catalog supported wire type	Thermal Vacuum Outgassing: Total mass loss (TML) 1.0% max., volatile condensable material (VCM) 0.1% max. IAW ASTM E595

SERIES 89 NANOMINIATURE Single-Row Rectangular Connectors



890-001 and 890-002 Plug and Receptacle Connectors with Insulated Wire



Layout	A	B BSC.	C BSC.
5P	.400 (10.16)	.295 (7.49)	.184 (4.67)
5S	.400 (10.16)	.295 (7.49)	.185 (4.70)
9P	.500 (12.70)	.395 (10.03)	.284 (7.21)
9S	.500 (12.70)	.395 (10.03)	.285 (7.24)
15P	.650 (16.51)	.545 (13.84)	.434 (11.02)
15S	.650 (16.51)	.545 (13.84)	.435 (11.05)
21P	.800 (20.32)	.695 (17.65)	.584 (14.83)
21S	.800 (20.32)	.695 (17.65)	.585 (14.86)
25P	.900 (22.86)	.795 (20.19)	.684 (17.37)
25S	.900 (22.86)	.795 (20.19)	.685 (17.40)
31P	1.050 (26.67)	.945 (24.00)	.834 (21.18)
31S	1.050 (26.67)	.945 (24.00)	.835 (21.21)
37P	1.200 (30.48)	1.095 (27.81)	.984 (24.99)
37S	1.200 (30.48)	1.095 (27.81)	.985 (25.02)
51P	1.550 (39.37)	1.445 (36.70)	1.334 (33.88)
51S	1.550 (39.37)	1.445 (36.70)	1.335 (33.91)

NOTES

- Material and finish:
 - Shell: see part number breakdown
 - Insulator: LCP N/A
 - Contacts: gold alloy/unplated
 - Wire: see part number breakdown
 - Hardware: stainless steel, passivated
- Inspect and Test IAW MIL-DTL-32139
- Interface dimensions per MIL-DTL-32139/1 & MIL-DTL-32139/2