

SERIES 89 NANOMINIATURE Single-Row Rectangular Connectors



890-032 Plug and Receptacle Jumper Connectors with Straight, 45°, and 90° Backshell

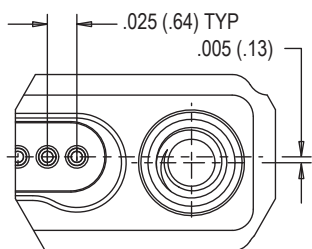
SINGLE-ROW RECTANGULAR CONNECTORS



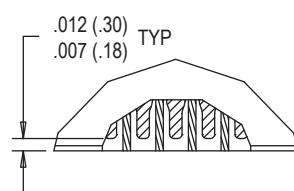
Glenair Nano Jumpers with Factory Installed Backshell feature gold alloy TwistPin contacts. Backshell wire exit configuration available in straight, 45°, and 90°. Contacts are precision- crimped to insulated, stranded wire. Nanomimature connectors offer premium performance and reliability for demanding applications, available in 8 arrangements. Contact spacing is .025 inches. 1 amp current rating, DWV rating 250 volts AC. Wire gages #30 and #32 AWG. TwistPin Contact System assures premium performance in demanding environments. Typical Applications include UAV's, satellites, missile systems and geophysical instruments. Wired 1 to 1, 2 to 2, 3 to 3 etc.

HOW TO ORDER													
Sample Part Number	890-032 -25 CS N L A2 -0 B 7 -12 T J N												
Series	890-032 = I/O Jumper with Backshell												
Insert Arrangement	5, 9, 15, 21, 25, 31, 37, 51												
Connector Type	<table border="1"> <thead> <tr> <th>Type</th> <th>Side 1</th> <th>Side 2</th> </tr> </thead> <tbody> <tr> <td>GP</td> <td>Plug (Pins)</td> <td>Plug (Pins)</td> </tr> <tr> <td>GS</td> <td>Receptacle (Sockets)</td> <td>Receptacle (Sockets)</td> </tr> <tr> <td>CS</td> <td>Plug (Pins)</td> <td>Receptacle (Sockets)</td> </tr> </tbody> </table>	Type	Side 1	Side 2	GP	Plug (Pins)	Plug (Pins)	GS	Receptacle (Sockets)	Receptacle (Sockets)	CS	Plug (Pins)	Receptacle (Sockets)
Type	Side 1	Side 2											
GP	Plug (Pins)	Plug (Pins)											
GS	Receptacle (Sockets)	Receptacle (Sockets)											
CS	Plug (Pins)	Receptacle (Sockets)											
Backshell Accessory Code	<table border="1"> <thead> <tr> <th>H = 45°, Lobe Side Exit</th> <th>L = 90°, Lobe Side Exit</th> </tr> </thead> <tbody> <tr> <td>K = 45°, Non-Lobe Side Exit</td> <td>M = 90°, Non-Lobe Side Exit</td> </tr> <tr> <td colspan="2">N = Straight, No Orientation</td> </tr> </tbody> </table>	H = 45°, Lobe Side Exit	L = 90°, Lobe Side Exit	K = 45°, Non-Lobe Side Exit	M = 90°, Non-Lobe Side Exit	N = Straight, No Orientation							
H = 45°, Lobe Side Exit	L = 90°, Lobe Side Exit												
K = 45°, Non-Lobe Side Exit	M = 90°, Non-Lobe Side Exit												
N = Straight, No Orientation													
Shell/Backshell Material and Finish	A1 = Aluminum Shell, Cadmium Plating A2 = Aluminum Shell, Electroless Nickel Plating A31 = Aluminum Shell, Zinc Nickel Plating, Black A33 = Aluminum Shell, Nickel PTFE Plating S = Stainless Steel Shell, Passivated T = Titanium Shell, Unplated												
Wire Gage	0 = #30 AWG (Wire Types A, B, C, E, and F) 2 = #32 AWG (Wire Type B Only)												
Wire Type	A = Ultra Lightweight XLETFE Insulation, Silver Coated Ultra High Strength Copper. B = Extruded PTFE Insulation, Silver Coated Copper NEMA HP3-ETX (MIL-W-16878/6) C = Cross Linked Modified ETFE Insulation, Silver Coated High Strength Copper. SAE AS22759/33-30 E = Cross Linked Modified ETFE Insulation, Low Fluoride, Lightweight, Silver Coated High Strength Copper Alloy. SAE AS22759/51-30 F = Cross Linked Modified ETFE Insulation, Low Fluoride, Lightweight, Silver- Coated Copper, SAE AS22759/52-30												
Wire Color Code	1 = White 2 = Yellow 7 = 10 Color Repeating (wire Type A is striped, Types B, C, E, and F are solid colors)												
Wire Length	Wire Length in Inches; 12 = 12.00 Inches; as required in one inch increments. 3" minimum. Tolerance provided in Wire Length Tolerance table												
Hardware	J = Hex Head Jackscrew, #0-80 UNF-2A T = Female Thread, #0-80 UNF-2B* *Stainless Steel Inserts installed in Aluminum Shells, tapped directly into Stainless Steel and Titanium Shells												
Shield/Jacket Option	See Shield/Jacket Options Table												

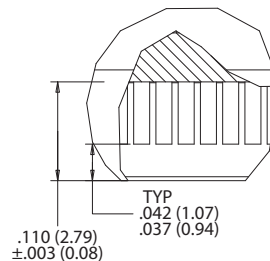
DETAIL A



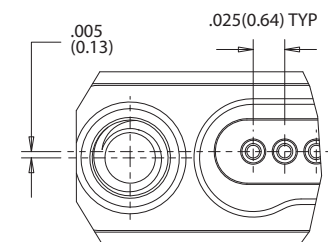
DETAIL B



DETAIL C



DETAIL D

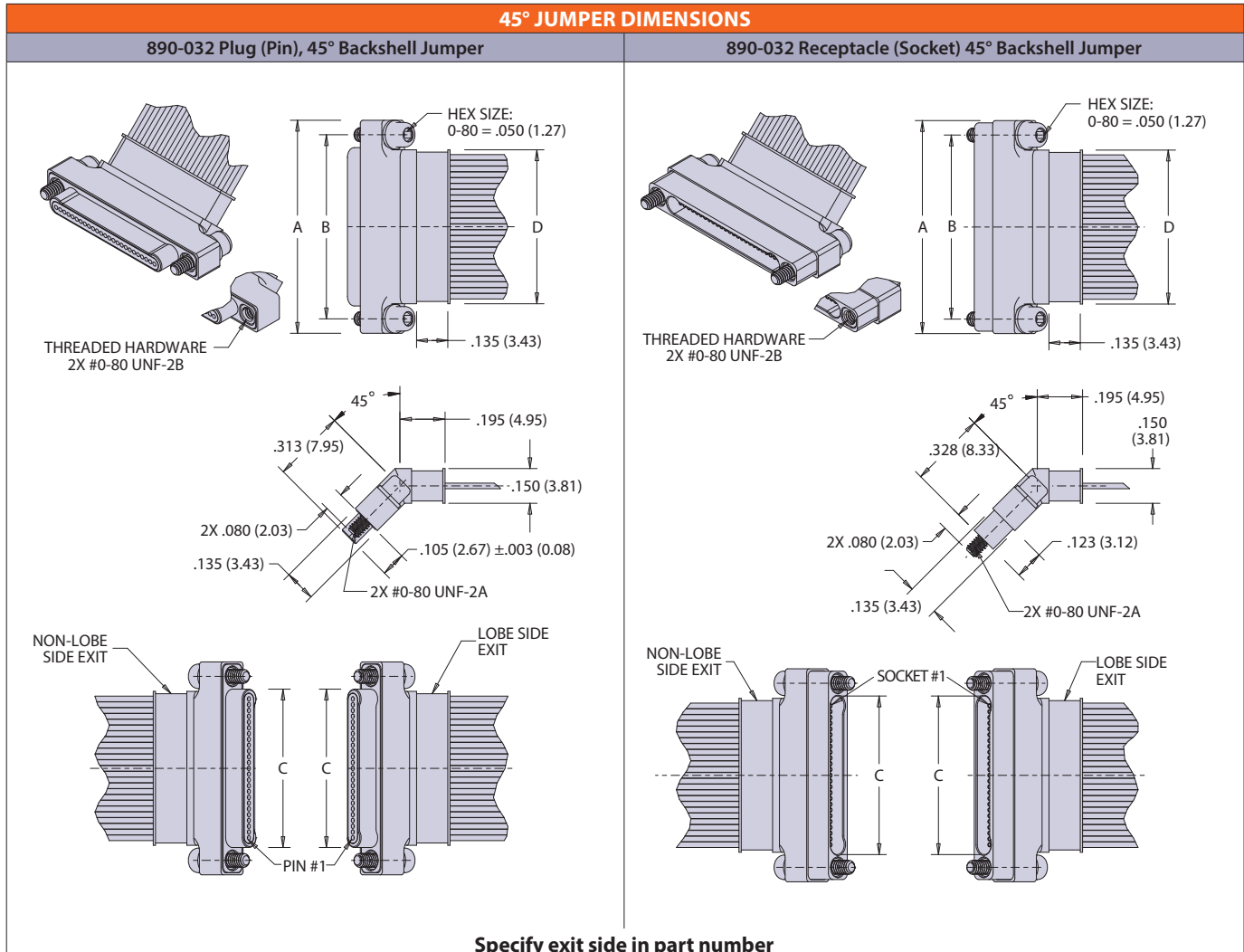


SERIES 89 NANOMINIATURE Single-Row Rectangular Connectors



890-032 Plug and Receptacle Jumper Connectors with Straight, 45°, and 90° Backshell

SINGLE-ROW RECTANGULAR CONNECTORS



Layout	A	B BSC.	C BSC.	D	Layout	A	B BSC.	C BSC.	D
5P	.420 (10.67)	.295 (7.49)	.184 (4.67)	.165 (4.19)	5S	.420 (10.67)	.295 (7.49)	.185 (4.70)	.165 (4.19)
9P	.520 (13.21)	.395 (10.03)	.284 (7.21)	.265 (6.73)	9S	.520 (13.21)	.395 (10.03)	.285 (7.24)	.265 (6.73)
15P	.670 (17.02)	.545 (13.84)	.434 (11.02)	.415 (10.54)	15S	.670 (17.02)	.545 (13.84)	.435 (11.05)	.415 (10.54)
21P	.820 (20.83)	.695 (17.65)	.584 (14.83)	.565 (14.35)	21S	.820 (20.83)	.695 (17.65)	.585 (14.86)	.565 (14.35)
25P	.920 (23.37)	.795 (20.19)	.684 (17.37)	.665 (16.89)	25S	.920 (23.37)	.795 (20.19)	.685 (17.40)	.665 (16.89)
31P	1.070 (27.18)	.945 (24.00)	.834 (21.18)	.815 (20.70)	31S	1.070 (27.18)	.945 (24.00)	.835 (21.21)	.815 (20.70)
37P	1.220 (30.99)	1.095 (27.81)	.984 (24.99)	.965 (24.51)	37S	1.220 (30.99)	1.095 (27.81)	.985 (25.02)	.965 (24.51)
51P	1.570 (39.88)	1.445 (36.70)	1.334 (33.88)	1.315 (33.40)	51S	1.570 (39.88)	1.445 (36.70)	1.335 (33.91)	1.315 (33.40)

PLUG HARDWARE		RECEPTACLE HARDWARE	
J - Jackscrew Option	T - Female Thread Option	J - Jackscrew Option	T - Female Thread Option

WIRE LENGTH TOLERANCE	
Length Range	Tolerance
3" - 48" (76.20 - 1219.20)	+0.50/-0.00 (+ 12.70/-0.00)
>48" - 72" (>1219.20 - 1828.80)	+1.00/-0.00 (+25.4/-0.00)
>72" - 120" (>1828.80 - 3048.00)	+2.00/-0.00 (+50.80/-0.00)
>120" (>3048.00)	+4.00/-0.00 (+101.6/-0.00)

SERIES 89 NANOMINIATURE Single-Row Rectangular Connectors



890-032 Plug and Receptacle Jumper Connectors with Straight, 45°, and 90° Backshell

SINGLE-ROW RECTANGULAR CONNECTORS

