

# SERIES 89 NANOMINIATURE Single-Row Rectangular Connectors



## 890-037 and 890-038 Plug and Receptacle Shorting Connectors

SINGLE-ROW RECTANGULAR CONNECTORS

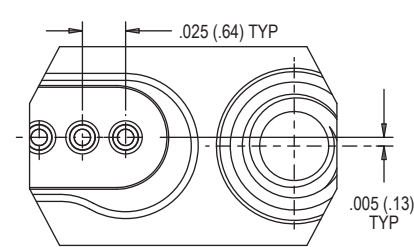


**Nano Plug, Single Row Shorting Connectors** feature gold alloy TwistPin contacts. These nanominiature shorting connectors provide ESD protection for sensitive instrumentation. Available with #0-80 female threads or #0-80 jackscrew threads. Choose Aluminum, Titanium or Stainless Steel Shells in eight layouts from 5 to 51 contacts. These connectors are intermateable with any corresponding Glenair Series 890 single row metal shell nanominiature connector.

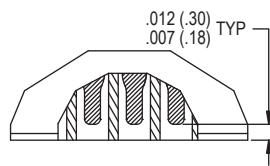
HOW TO ORDER						
<b>Sample Part Number</b>		<b>890-037</b>	<b>-25P</b>	<b>A2</b>	<b>-C</b>	<b>-J</b>
<b>Series</b>	<b>890-037</b> = Shorting Plug <b>890-038</b> = Shorting Receptacle					
<b>Insert Arrangement/ Contact Type</b>	Plugs (890-037): <b>5P, 9P, 15P, 21P, 25P, 31P, 37P, 51P</b> , Receptacles (890-038): <b>5S, 9S, 15S, 21S, 25S, 31S, 37S, 51S</b>					
<b>Shell Material and Finish</b>	<b>A1</b> = Aluminum Shell, Cadmium Plating <b>A31</b> = Aluminum Shell, Zinc Nickel Plating, Black <b>S</b> = Stainless Steel Shell, Passivated		<b>A2</b> = Aluminum Shell, Electroless Nickel Plating <b>A33</b> = Aluminum Shell, Nickel PTFE Plating <b>T</b> = Titanium Shell, Unplated			
<b>Shorting Combination</b>	<b>C</b> = All Contacts Shorted Together, Isolated from the Shell <b>G</b> = All Contacts Shorted Together, and Grounded to the Shell					
<b>Hardware</b>	<b>J</b> = Hex Head Jackscrew *Stainless Steel Inserts installed In Aluminum Shells, tapped directly into Stainless Steel and Titanium Shells		<b>T</b> = Female Thread*			

PLUG HARDWARE		RECEPTACLE HARDWARE	
J - Jackscrew	T - Female Thread	J - Jackscrew	T - Female Thread

### DETAIL A



### DETAIL B



### NOTES

- Inspect and Test IAW MIL-DTL-32139
- Interface dimensions per MIL-DTL-32139/1 and MIL-DTL-32139/2
- Material and finish:
  - Shell: see part number breakdown
  - Insulator: LCP N/A
  - Contacts: Gold alloy/unplated
  - Wire: single strand copper wire, uninsulated, with gold plating, 30 AWG
  - Hardware: stainless steel, passivated

### PERFORMANCE SPECIFICATIONS

**Contact Spacing:** .025" (0.64) contact centers  
**Current Rating:** 1 AMP maximum tested per EIA-364-70  
**DWV:** 250 VAC RMS sea level, 100 VAC RMS 70,000 feet per EIA-364 Procedure 20  
**Insulation Resistance:** 5000 Megohms minimum test voltage 100 VDC, per EIA-364 Procedure 21  
**Operating Temperature:** -55° C. to +125° C.

**Contact Resistance:** 71 millivolt drop maximum, 1 AMP current, any catalog supported wire type  
**Vibration:** 20 g's, IAW EIA-364-28, Condition IV  
**Shock:** 100 g's, IAW EIA-364-27, Condition G  
**Durability:** 200 mating cycles per test procedure EIA-364-09  
**Corrosion Resistance:** 48 hours salt spray IAW EIA-364-26, Condition B

**Humidity:** 240 hours, IAW EIA-364-31, Test Condition B

**Contact Engaging/Separation Force:** 5 ounce maximum, 0.4 ounce minimum

**Thermal Vacuum Outgassing:** Total mass loss (TML) 1.0% max., volatile condensable material (VCM) 0.1% max. IAW ASTM E595

# SERIES 89 NANOMINIATURE Single-Row Rectangular Connectors



## 890-037 and 890-038 Plug and Receptacle Shorting Connectors

SINGLE-ROW RECTANGULAR CONNECTORS

