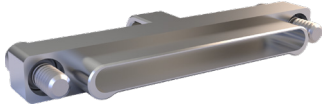


# SERIES 89 NANOMINIATURE Single-Row Rectangular Connectors



## 899-010 EMI Cover

SINGLE-ROW RECTANGULAR CONNECTORS



**Glenair EMI Covers** offer the same EMI protection as mated connectors, from electro-magnetic interference, as a result of electromagnetic induction emitted from intended external sources such as radio transmissions or electromagnetic radiation from unintentional sources such as electric power transmission lines. These covers feature a solid one piece construction machined from your choice of aluminum, stainless steel or titanium. Standard aluminum finishes include cadmium or electroless nickel plating. Available with or without lanyard attachment. Covers are in accordance with MIL-DTL-32139/1 and MIL-DTL-32139/2

HOW TO ORDER	
<b>Sample Part Number</b>	<b>899-010 -25 P A2 J F 3 -126</b>
<b>Series</b>	<b>899-010</b> = EMI Single Row, Nanominiature Cover
<b>Insert Arrangement</b>	<b>5, 9, 15, 21, 25, 31, 37, 51</b>
<b>Body Style</b>	<b>P</b> = Plug <b>S</b> = Receptacle
<b>Cover Material and Finish</b>	<b>A1</b> = Aluminum Shell, Cadmium Plating <b>A31</b> = Aluminum Shell, Zinc Nickel Plating, Black <b>S</b> = Stainless Steel Shell, Passivated <b>A2</b> = Aluminum Shell, Electroless Nickel Plating <b>A33</b> = Aluminum Shell, Nickel PTFE Plating <b>T</b> = Titanium Shell, Unplated
<b>Hardware</b>	<b>J</b> = Jackscrew <b>T</b> = Female Thread (Stainless steel inserts installed in aluminum shells, tapped directly into stainless steel and titanium shells)
<b>Attachment Type</b>	<b>N</b> = No Lanyard <b>K</b> = No Lanyard/No Eyelet Attachment Point <b>F</b> = Stainless Steel Wire Rope, Nylon jacket, Black, Ø .034 (0.86) <b>G</b> = Flexible Dacron Cord, MIL-DTL-5040 Type 1 Ø.0625 (1.59), Natural <b>H</b> = Stainless Steel Wire Rope, Fluoropolymer Jacket, Black, Ø .034 (0.86)
<b>Attachment Length</b>	Attachment Length in Inches (Omit for No Lanyard)
<b>Attachment Diameter</b>	<b>-098, -126, -140, -156, -167, -188, -197, -218</b> For Dimensions See Table I; (Omit for No Lanyard)

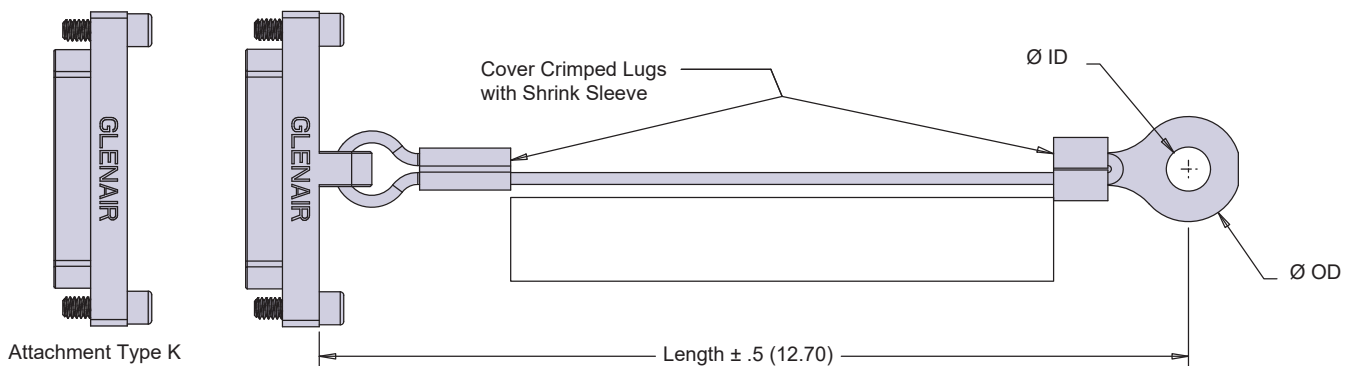


TABLE I: ATTACHMENT DIAMETER								
Dash No.	-098	-126	-140	-156	-167	-188	-197	-218
ID	.098 (2.49)	.126 (3.20)	.140 (3.56)	.156 (3.96)	.167 (4.24)	.188 (4.78)	.197 (5.00)	.223 (5.66)/.218 (5.54)
OD	.300 (7.62)	.300 (7.62)	.300 (7.62)	.300 (7.62)	.300 (7.62)	.300 (7.62)	.300 (7.62)	.300 (7.62)

# SERIES 89 NANOMINIATURE Single-Row Rectangular Connectors



## 899-010 EMI Cover

SINGLE-ROW RECTANGULAR CONNECTORS

