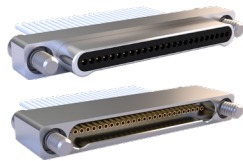


SERIES 89 NANOMINIATURE Single-Row Rectangular Connectors



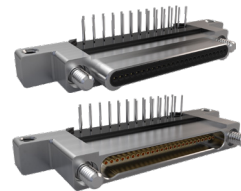
Product Selection Guide

SINGLE-ROW RECTANGULAR CONNECTORS



**890-001 and 890-002
Connectors with
Insulated Wire**

B-2



**890-043 and 890-044
Right-Angle Mount Thru-
Hole PCB Connectors
with Mounting Ears**

B-30



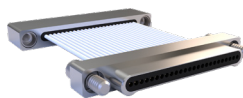
**890-031
Straight, 45°, or 90°
connector with factory
installed backshell and
insulated wire**

B-4



**890-010 and 890-011
Vertical Surface Mount
PCB Connectors**

B-36



**890-005
Back-to-Back Cable**

B-8



**890-017 and
890-018 Vertical Surface
Mount PCB Connectors
with mounting ears**

B-40



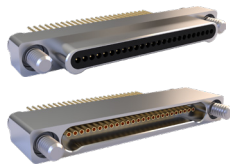
**890-032
back-to-back straight, 45°
or 90° connector. factory
installed backshell and
insulated wire**

B-10



**890-012 and 890-013
Right-Angle Surface
Mount PCB Connectors**

B-46



**890-003 and 890-004
Connectors with
Uninsulated Wire**

B-14



**890-019 and
890-020 Right-Angle
Surface Mount PCB
Connectors with
mounting ears**

B-50



**890-006 and 890-007
Vertical-Mount Thru-Hole
PCB Connectors**

B-16



**890-016 Single Row
Sav-Con® Connector
Saver**

B-56



**890-039 and 890-040
Vertical-Mount Thru-Hole
PCB Connectors with
Mounting Ears**

B-20



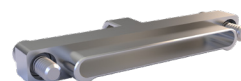
**890-037 and 890-038
Shorting Connector**

B-58



**890-008 and 890-009
Right-Angle Mount Thru-
Hole PCB Connectors**

B-26



899-010 EMI Cover

B-60